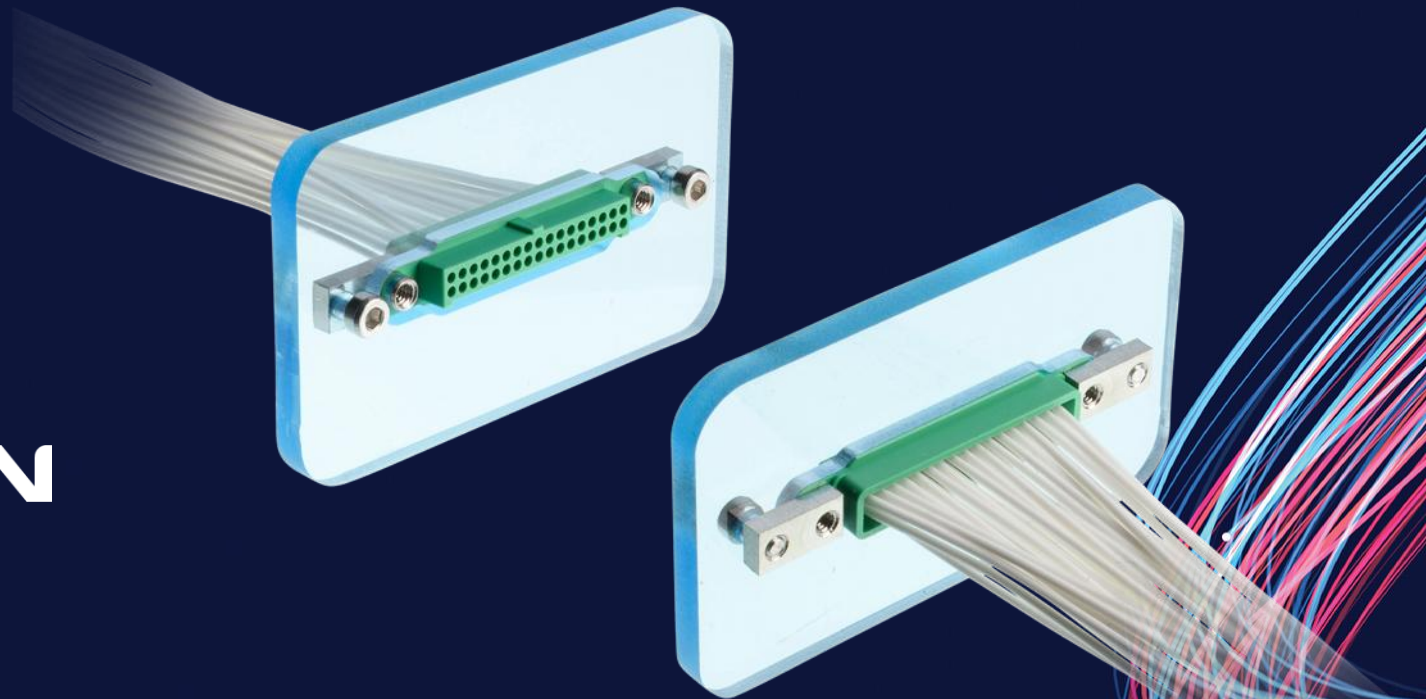


HARWIN



Panel Mount with Gecko-SL





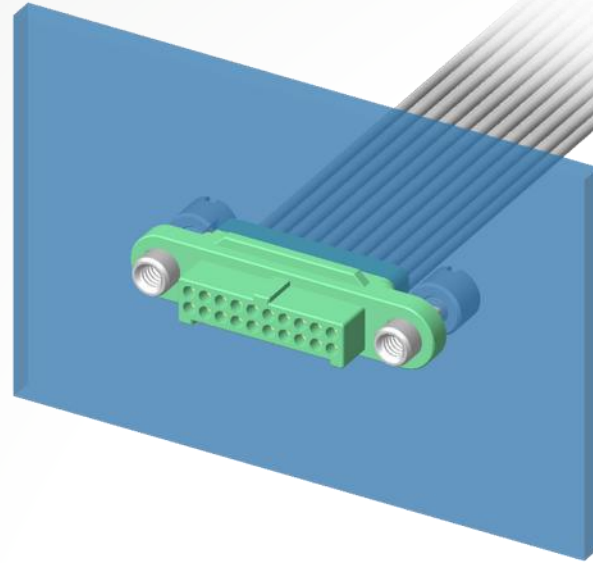
PANEL MOUNT WITH GECKO-SL - CONTENTS

Section	Page
Introduction	3-4
Male Plug Rear Panel Mount (Standard Gender screw-loks) <ul style="list-style-type: none">▪ Attaching to Panels▪ Mating Female Receptacle connectors	5 6 7
Female Receptacle Rear Panel Mount (Reverse Fix screw-loks) <ul style="list-style-type: none">▪ Mating Male Plug connectors	8 9
Male Plug Front Panel Mount (Standard Gender screw-loks) <ul style="list-style-type: none">▪ Attaching to Panels▪ Mating Female Receptacle connectors	10 11 12

Section	Page
Female Receptacle Front Panel Mount (Reverse Fix screw-loks) <ul style="list-style-type: none">▪ Mating Male Plug connectors	13 14
Male Plug Front Panel Mount with Metal Backshells <ul style="list-style-type: none">▪ Mating Female Receptacle connectors	15 16
Female Receptacle Front Panel Mount with Metal Backshells <ul style="list-style-type: none">▪ Mating Male Plug connectors▪ Braiding	17 18 19
Help from Harwin	20-22



WHAT IS PANEL MOUNT?



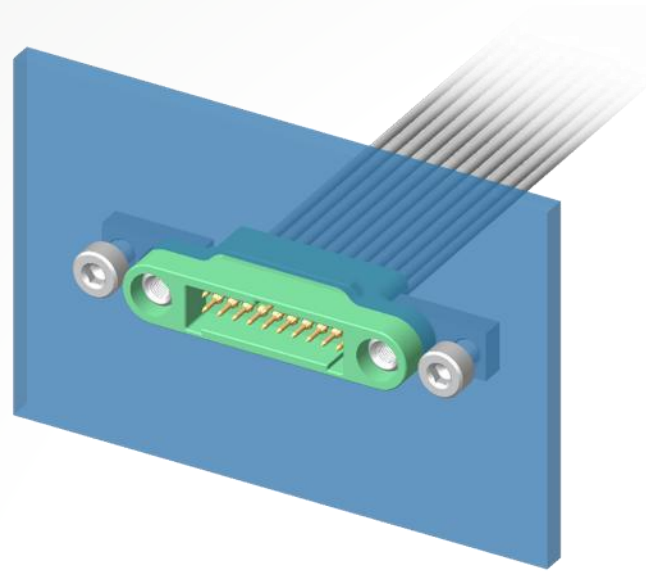
Panel Mount is a mechanical feature or features built into the design of a connector half. It allows the connector to be secured to an equipment panel, external case or enclosure. Often (but not always), connectors fitted with panel mount features will be cable connectors.

Read more information about panel mount on our [training blog post](#).



CAN I ACHIEVE PANEL MOUNT WITH GECKO?

YES

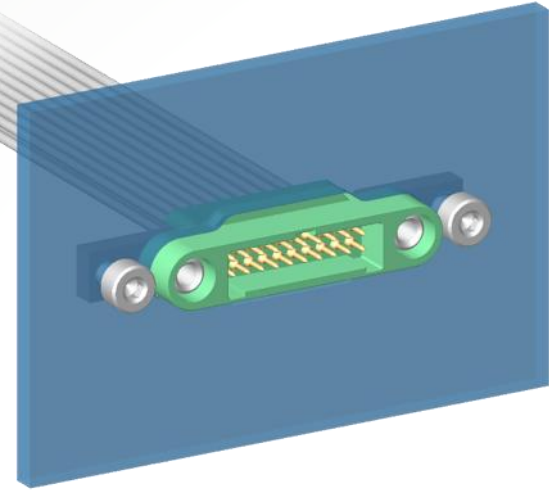


Yes, you can achieve both Front Panel mounted and Rear Panel Mounted with [Gecko](#). This Training Module gives details and part numbers to help you choose the right combination for signal-only Gecko-SL connectors.

By choosing the same jackscrew configurations, these cable-to-panel connections can also be achieved with mixed signal & power connections from the Gecko-MT range. And you can also select the same screw-lok combinations fitted to ready-made cable assemblies.

MALE PLUG REAR PANEL MOUNT – USING STANDARD GENDER

Rear Panel
Mount Male Plug



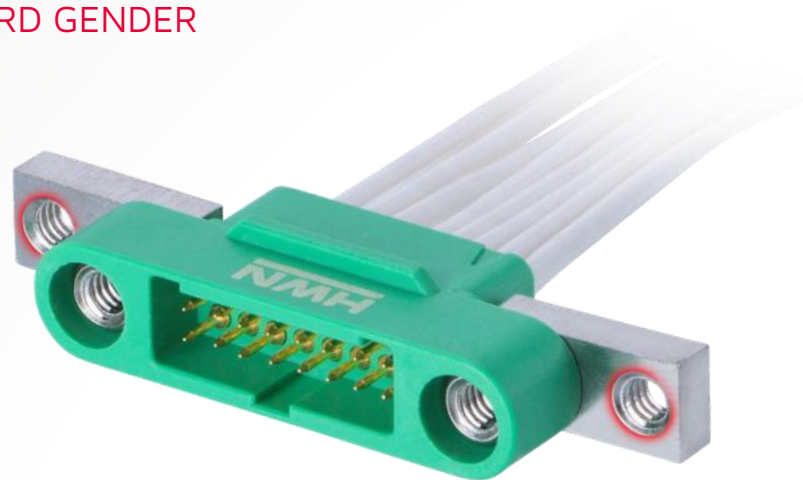
Rear Panel Mount for the Male Plug cable connector uses standard gender screw-loks with extended lugs, giving additional M2 threaded fixings:

- Male Plug Housing (with extended lug screw-loks fitted) = [G125-324XX96M5](#)
- XX = Number of contacts: 06, 10, 12, 16, 20, 26, 34 or 50
- Male Plug contact, sold separately = [G125-1010005](#) (for 26 AWG) or [G125-1020005](#) (for 28-32 AWG)
- Contact Finish is gold

MALE PLUG REAR PANEL MOUNT – USING STANDARD GENDER



G125-4520000B

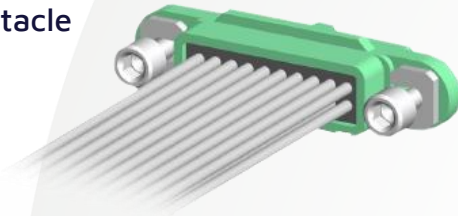


To fix these connectors to your panel, the extended lugs already have internal threads. Just add M2 threaded bolts at the front of the panel.

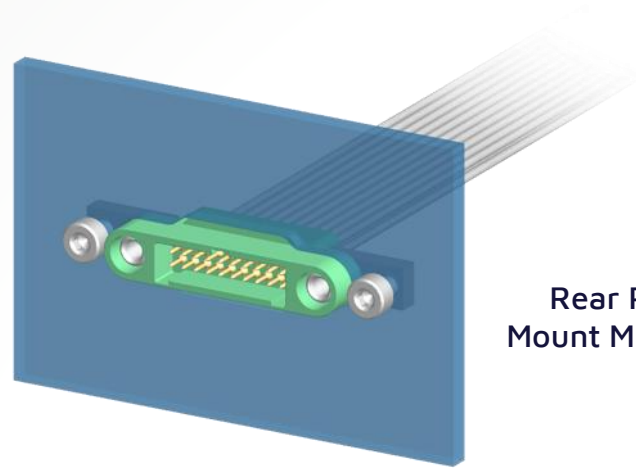
- Ensure you specify adequate thread length on the bolt to pass through the panel and fasten to the jackscrew lug.
- For thinner panels (less than 3mm), our 5mm bolts will be suitable: [G125-4520000B](#) (with a hex socket head).
- Any bolt with an M2 x 0.4 thread can be used for thicker panels.

MALE PLUG REAR PANEL MOUNT – USING STANDARD GENDER

Mating Cable
Female Receptacle



Rear Panel
Mount Male Plug

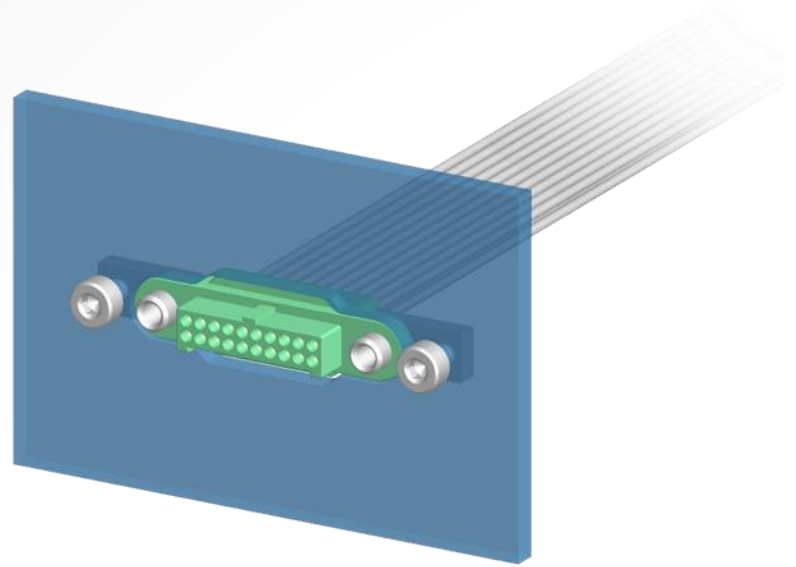


The mating Female Receptacle connector requires standard gender floating screw-loks:

- Female Receptacle housing = [G125-224XX96F1](#)
- XX = Number of contacts: 06, 10, 12, 16, 20, 26, 34 or 50
- Female Receptacle contact, sold separately = [G125-0010005](#) (for 26 AWG) or [G125-0020005](#) (for 28-32 AWG)
- Contact Finish is gold

FEMALE RECEPTACLE REAR PANEL MOUNT – USING REVERSE FIX

Rear Panel Mount Female Receptacle

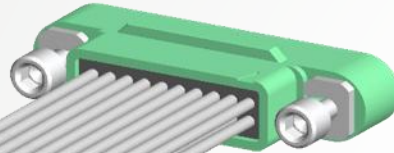


Using the Female Receptacle reverse fix screw-loks, the Female Receptacle connector is mounted using the same method as the rear panel Male Plug (see [page 6](#)):

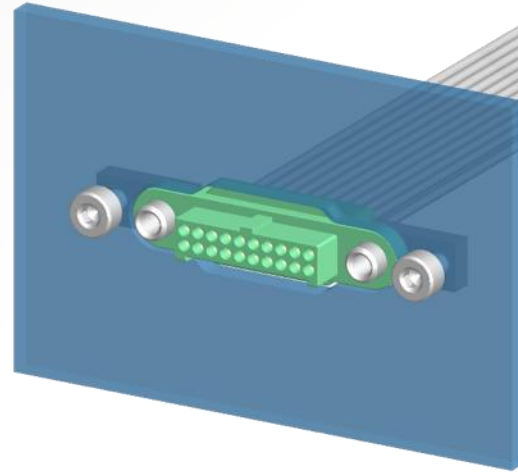
- Female Receptacle Housing (with extended lug screw-loks fitted) = [G125-224XX96F5](#)
- XX = Number of contacts: 06, 10, 12, 16, 20, 26, 34 or 50
- Female Receptacle contact, sold separately = [G125-0010005](#) (for 26 AWG) or [G125-0020005](#) (for 28-32 AWG)
- Contact Finish is gold

FEMALE RECEPTACLE REAR PANEL MOUNT – USING REVERSE FIX

Mating Cable
Male Plug



Rear Panel
Mount Female
Receptacle

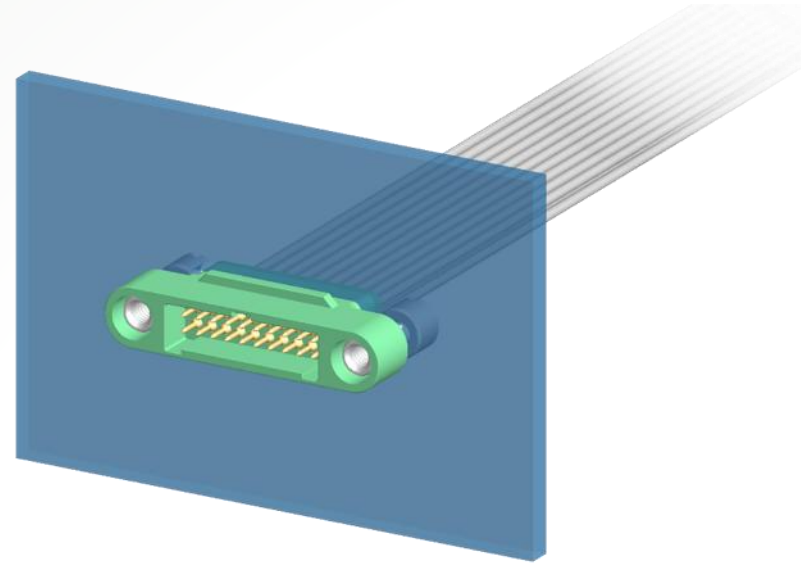


The mating Male Plug connector also requires reverse fix floating screw-loks:

- Male Plug housing = [G125-324XX96M3](#)
- XX = Number of contacts: 06, 10, 12, 16, 20, 26, 34 or 50
- Male Plug contact, sold separately = [G125-1010005](#) (for 26 AWG) or [G125-1020005](#) (for 28-32 AWG)
- Contact Finish is gold

MALE PLUG FRONT PANEL MOUNT – USING STANDARD GENDER

Front Panel
Mount Male Plug



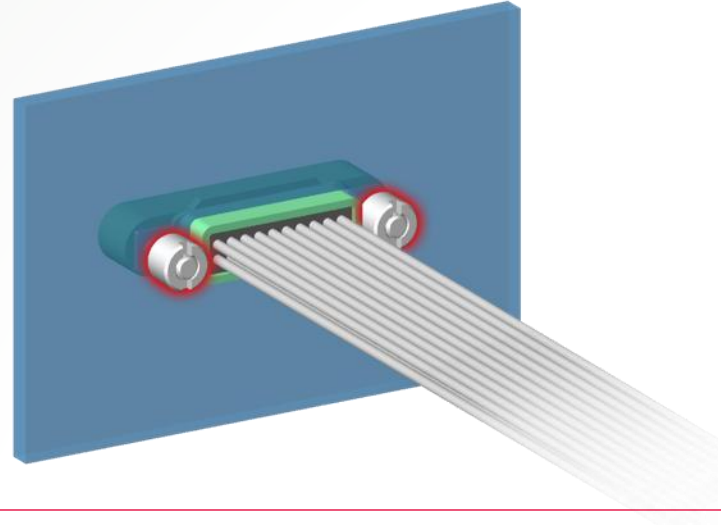
Front Panel Mount for the Male Plug cable connector uses the same standard gender screw-loks as board mount for PCB connectors:

- Male Plug Housing = [G125-324XX96M2](#)
- XX = Number of contacts: 06, 10, 12, 16, 20, 26, 34 or 50
- Male Plug contact, sold separately = [G125-1010005](#) (for 26 AWG) or [G125-1020005](#) (for 28-32 AWG)
- Contact Finish is gold

MALE PLUG FRONT PANEL MOUNT – USING STANDARD GENDER



G125-4510000B

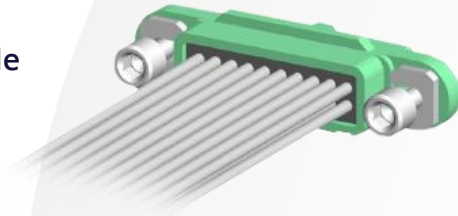


To fix these connectors to your panel, the fixings have rear studs, externally threaded to M2 x 0.4. These pass through the panel and are secured with nuts at the rear face of the panel.

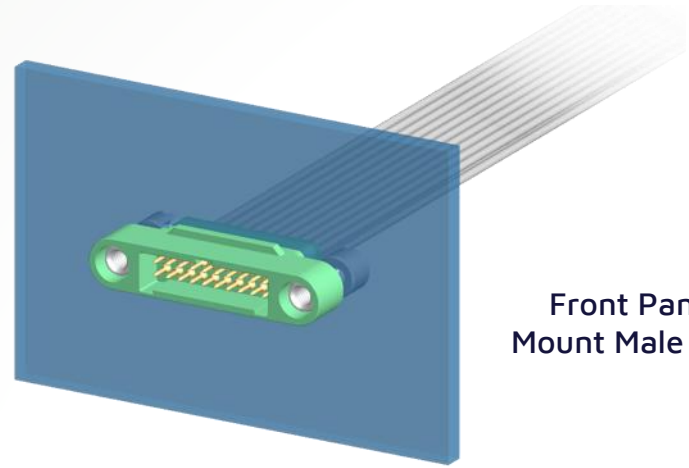
These M2 slotted nuts will need to be ordered separately – the part number is [G125-4510000B](#).

MALE PLUG FRONT PANEL MOUNT – USING STANDARD GENDER

Mating Cable
Female
Receptacle



Front Panel
Mount Male Plug

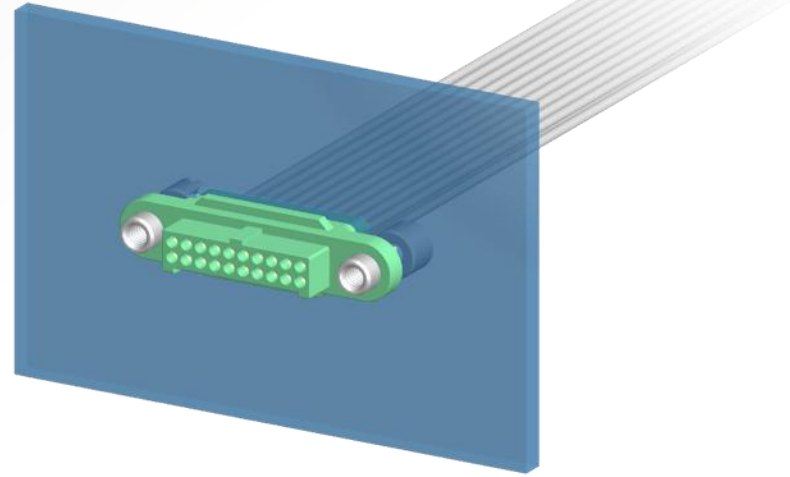


The mating Female Receptacle connector is the same as mating with the Rear Panel Mount, requiring standard gender floating screw-loks:

- Female Receptacle housing = [G125-224XX96F1](#)
- XX = Number of contacts: 06, 10, 12, 16, 20, 26, 34 or 50
- Female Receptacle contact, sold separately = [G125-0010005](#) (for 26 AWG) or [G125-0020005](#) (for 28-32 AWG)
- Contact Finish is gold

FEMALE RECEPTACLE FRONT PANEL MOUNT – USING REVERSE FIX

Front Panel Mount
Female Receptacle

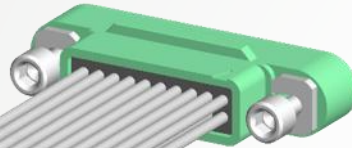


Using the Female Receptacle reverse fix screw-loks, the Female Receptacle connector is mounted using the same method as the front panel Male Plug (see [page 10](#)):

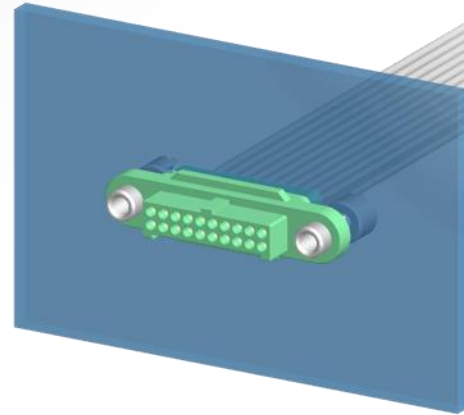
- Female Receptacle Housing = [G125-224XX96F3](#)
- XX = Number of contacts: 06, 10, 12, 16, 20, 26, 34 or 50
- Female Receptacle contact, sold separately = [G125-0010005](#) (for 26 AWG) or [G125-0020005](#) (for 28-32 AWG)
- Contact Finish is gold

FEMALE RECEPTACLE FRONT PANEL MOUNT – USING REVERSE FIX

Mating Cable
Male Plug



Front Panel
Mount Male Plug

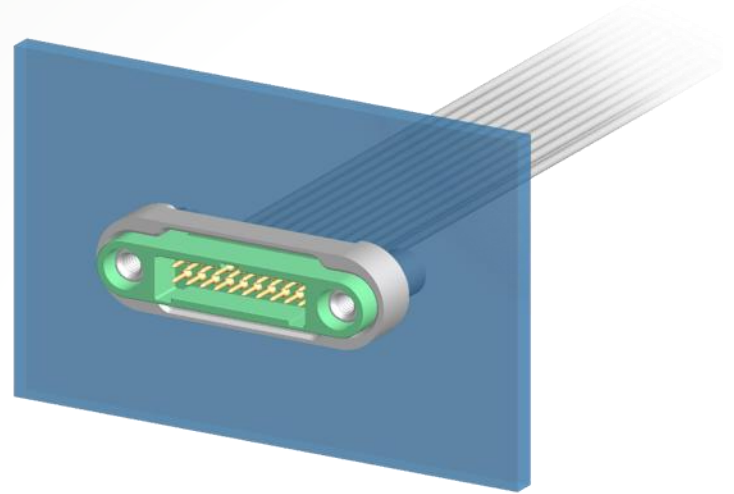


The mating Male Plug connector is the same as mating with the Rear Panel Mount, requiring reverse fix floating screw-loks:

- Male Plug housing = [G125-324XX96M3](#)
- XX = Number of contacts: 06, 10, 12, 16, 20, 26, 34 or 50
- Male Plug contact, sold separately = [G125-1010005](#) (for 26 AWG) or [G125-1020005](#) (for 28-32 AWG)
- Contact Finish is gold

MALE PLUG FRONT PANEL MOUNT – USING METAL BACKSHELLS

Panel Mount Male Plug
with Metal Backshells

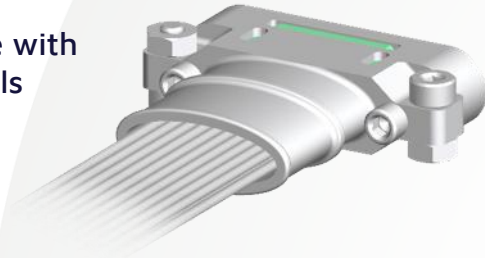


You can add metal backshells to the connection, for additional durability or shielding (with the same front panel Male Plug from [page 10](#)):

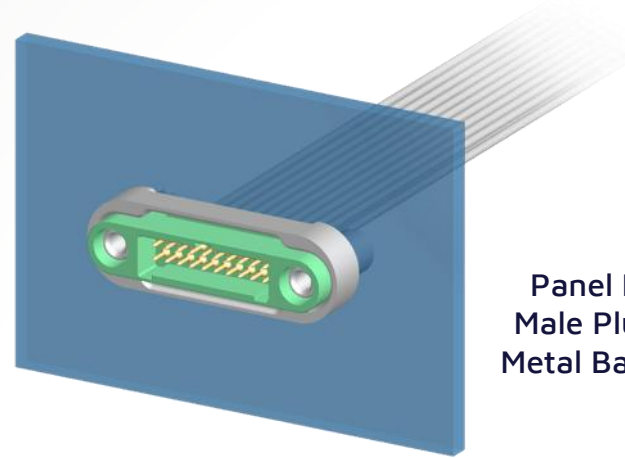
- Male Plug Housing = [G125-324XX96M2](#), Panel Mount Backshell = [G125-960XX02](#)
- XX = Number of contacts: 06, 10, 12, 16, 20, 26, 34 or 50
- Male Plug contact, sold separately = [G125-1010005](#) (for 26 AWG) or [G125-1020005](#) (for 28-32 AWG)
- Contact Finish is gold

MALE PLUG FRONT PANEL MOUNT – USING METAL BACKSHELLS

Mating Cable
Female Receptacle with
Metal Backshells



Panel Mount
Male Plug with
Metal Backshells

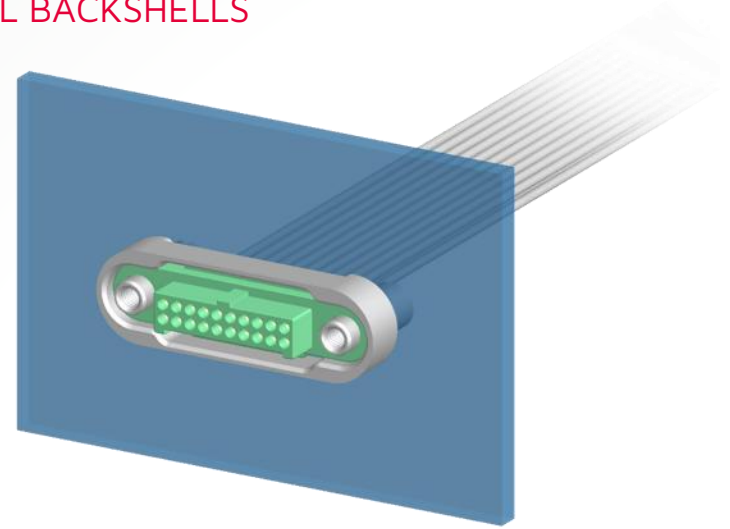


The mating cable metal backshell kit comes with the applicable longer screw-lok fixings:

- Female Receptacle Housing = [G125-224XX9600](#), Cable Backshell Kit = [G125-964XXF1](#)
- XX = Number of contacts: 06, 10, 12, 16, 20, 26, 34 or 50
- Female Receptacle contact, sold separately = [G125-0010005](#) (for 26 AWG) or [G125-0020005](#) (for 28-32 AWG)
- Contact Finish is gold

FEMALE RECEPTACLE FRONT PANEL MOUNT – USING METAL BACKSHELLS

Panel Mount Female
Receptacle with
Metal Backshells

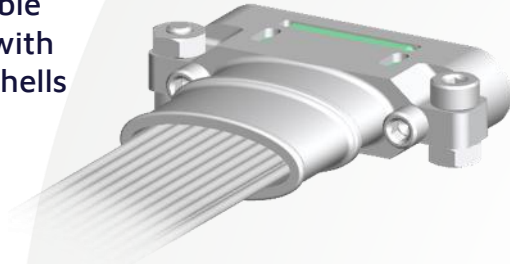


This can also be used with reverse fix and panel mounted Female Receptacle connectors (with the same front panel Female Receptacle from [page 13](#)):

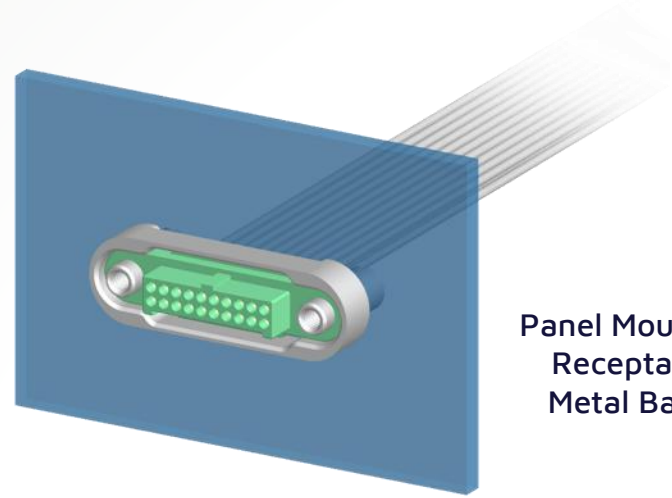
- Female Receptacle Housing = [G125-224XX96F3](#), Panel Mount Backshell = [G125-960XX02](#)
- XX = Number of contacts: 06, 10, 12, 16, 20, 26, 34 or 50
- Female Receptacle contact, sold separately = [G125-0010005](#) (for 26 AWG) or [G125-0020005](#) (for 28-32 AWG)
- Contact Finish is gold

FEMALE RECEPTACLE FRONT PANEL MOUNT – USING METAL BACKSHELLS

Mating Cable
Male Plug with
Metal Backshells



Panel Mount Female
Receptacle with
Metal Backshells



The same cable metal backshell kit works with both the Male Plug and Female Receptacle connectors:

- Male Plug Housing = [G125-324XX9600](#), Cable Backshell Kit = [G125-964XXF1](#)
- XX = Number of contacts: 06, 10, 12, 16, 20, 26, 34 or 50
- Male Plug contact, sold separately = [G125-1010005](#) (for 26 AWG) or [G125-1020005](#) (for 28-32 AWG)
- Contact Finish is gold

FRONT PANEL MOUNT – USING METAL BACKSHELLS

Add Metal Braiding for full shielding



Add Plastic Braiding for durability, protection (not shown)

To complete the full shielding effect, use braiding on the external cable assembly to shield the wires. The braid can be attached to the rear collar of the cable metal backshell. Alternatively, affix plastic braiding just for added durability and cable protection.

- Micro-Band or BAND-IT Ties = [M80-9470000](#) (206.8mm) or [M80-9480000](#) (362mm) – use with applicable BAND-IT tooling
- Plastic Cable ties for use with plastic braid – not available from Harwin

CONSIDERATIONS



When specifying connectors from this Training Module, please consider:

- Not all connector variations will be stocked, some will be made-to-order – please check availability in advance of your production requirements.
- We supply some full cable assemblies as standard, but we can also manufacture a wide range of cable assemblies to order, including braided, labelled, twisted pairs, and a variety of wire insulation colors. [Contact us](#) for help!

LEARN MORE ABOUT OUR OTHER RANGES



HIGH RELIABILITY
WITH SUPREME
PERFORMANCE



DEPENDABLE
CONNECTIVITY
ACROSS THE BOARD



INNOVATIVE
DESIGNS FOR
EASY ASSEMBLY

Find out more about our full range
of inter-connection solutions at

www.harwin.com

HRI
RANGE

BBi
RANGE

EZi
RANGE

GET HELP FROM A HARWIN EXPERT

Our experts are specialists in their field with many years of experience in their respective roles and industries.

Find an expert that can help you with your enquiry.

[Click Here >>](#)

CAD Models and Evaluation Samples also available at www.harwin.com





HARWIN

CONNECT TECHNOLOGY
WITH CONFIDENCE



E: support@harwin.com

[WWW.HARWIN.COM](http://www.harwin.com)