

Customer Information Sheet

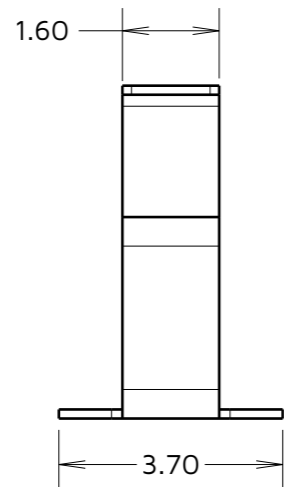
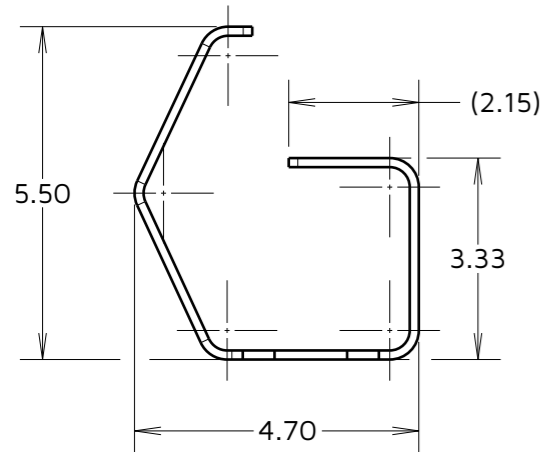
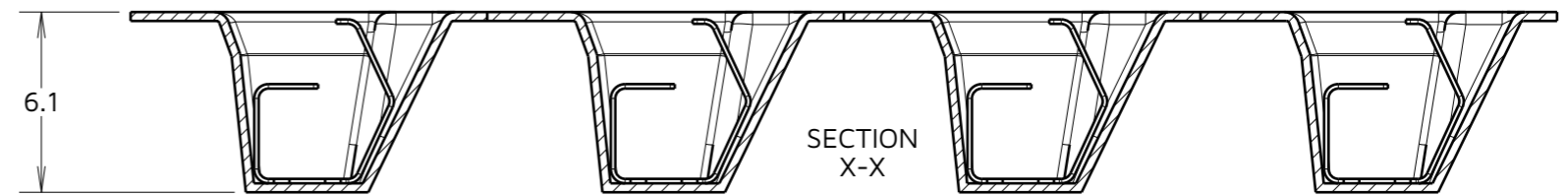
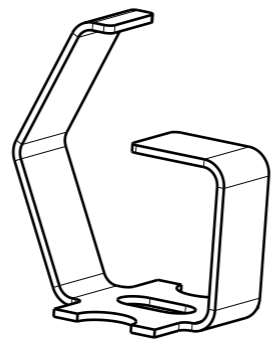
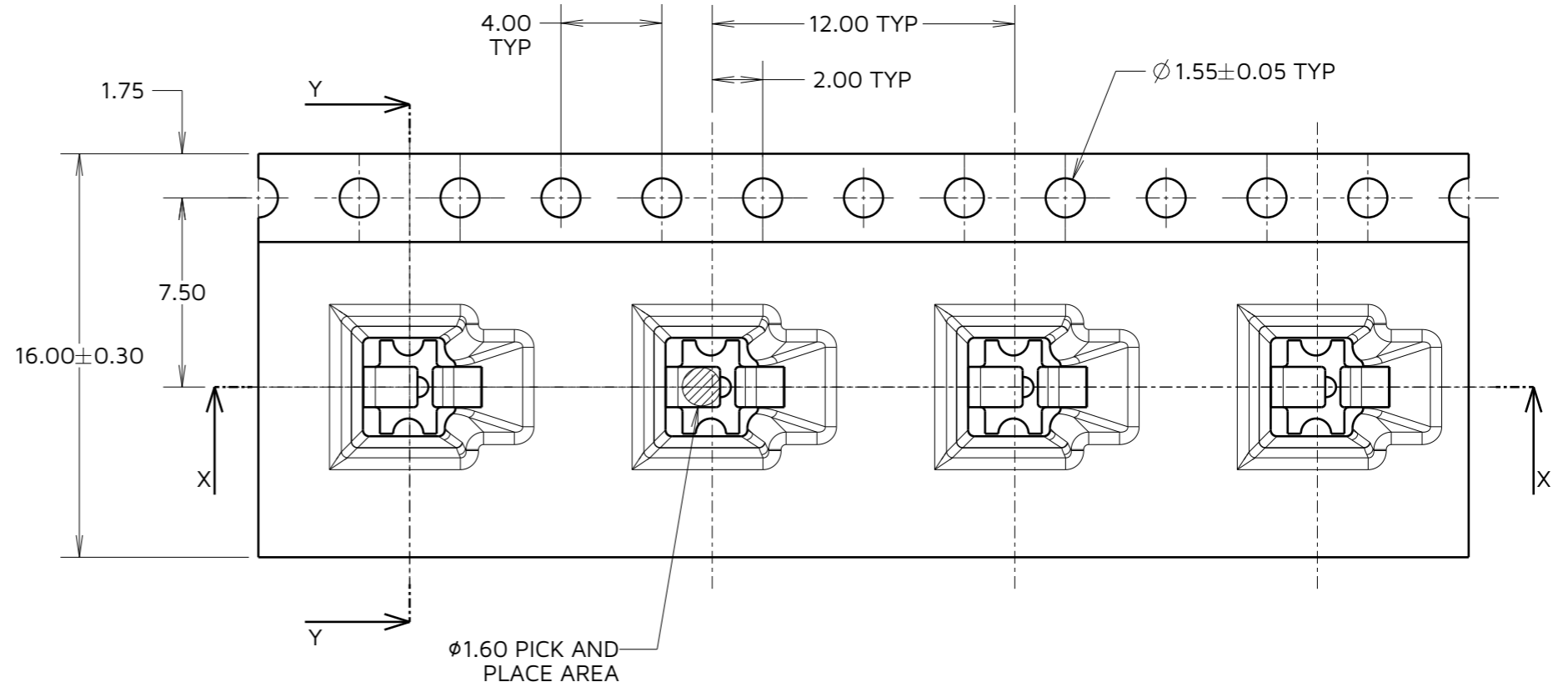
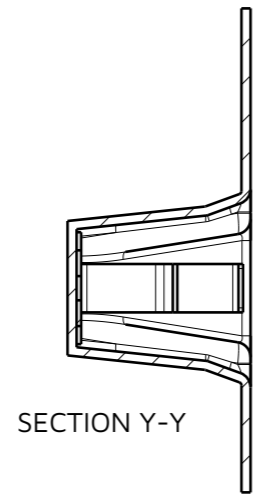
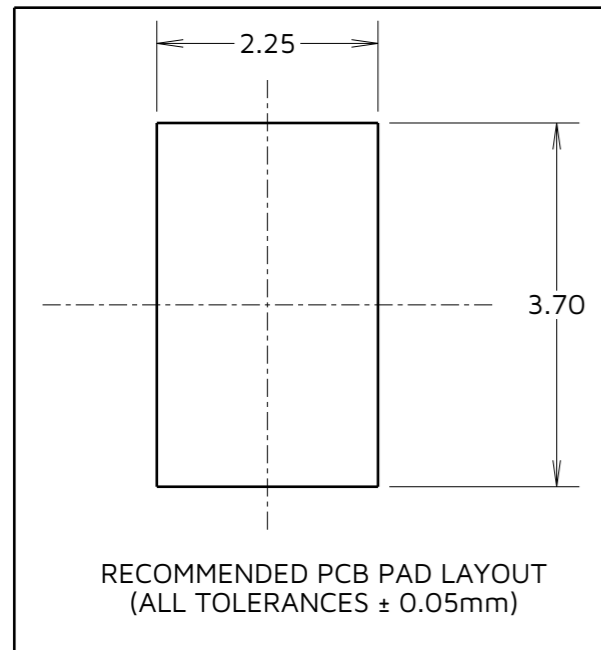
IF IN DOUBT - ASK

©

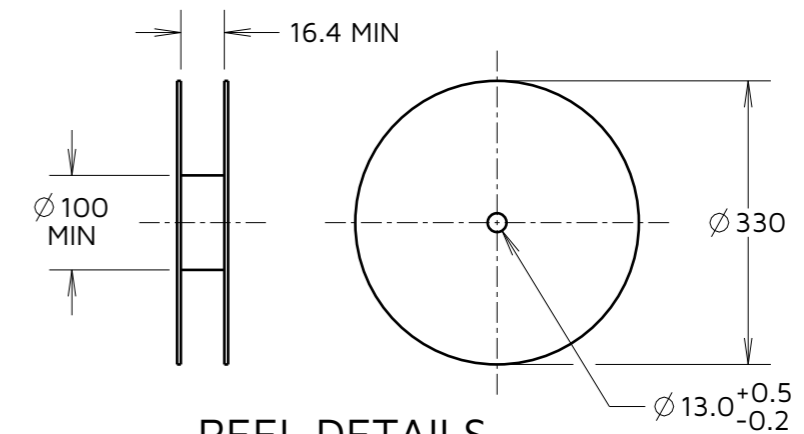
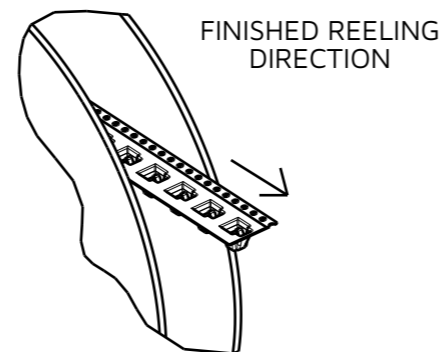
NOT TO SCALE

THIRD ANGLE PROJECTION

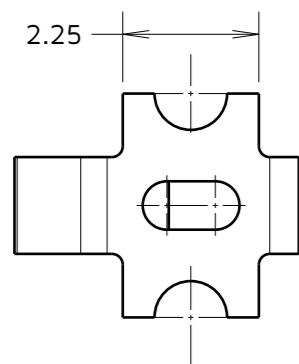
ALL DIMENSIONS IN mm



COMPONENT DETAILS



REEL DETAILS



NOTES:

1. QUANTITY OF COMPONENTS PER REEL = 900.
2. THIS PRODUCT IS TAPED AND REELED IN ACCORDANCE WITH EIA-481 (ELECTRONICS INDUSTRIES ASSOCIATION).
3. SEE COMPONENT SPEC C055XX FOR FULL SPECIFICATION (LATEST ISSUE).
4. SEE SHEET 3 FOR RECOMMENDED DEFLECTION DIMENSIONS.

RA	3	04.02.25	35675
NAME	ISS.	DATE	CN/CO
APPROVED:		R.ALEXANDER	
CHECKED:		R.PORTLOCK	
DRAWN:		R.PORTLOCK	

HARWIN

www.harwin.com

TOLERANCES
X. = $\pm 1\text{mm}$
X.X = $\pm 0.50\text{mm}$
X.XX = $\pm 0.20\text{mm}$
X.XXX = $\pm 0.01\text{mm}$
ANGLES = $\pm 5^\circ$
UNLESS STATED

THIS DRAWING AND ANY INFORMATION OR DESCRIPTIVE MATTER SET OUT HEREON ARE CONFIDENTIAL AND COPYRIGHT PROPERTY OF THE HARWIN GROUP AND MUST NOT BE DISCLOSED, LOANED, COPIED OR USED FOR MANUFACTURING, TENDERING OR FOR ANY OTHER PURPOSE WITHOUT THEIR WRITTEN PERMISSION.

MATERIAL & FINISH:
SEE SHEET 3

TITLE:
MULTI-DIRECTIONAL SPRING CONTACT IN TAPE AND REEL

DRAWING NUMBER:
S1931-46R

SHT
2
OF
3

Customer Information Sheet

IF IN DOUBT - ASK

©

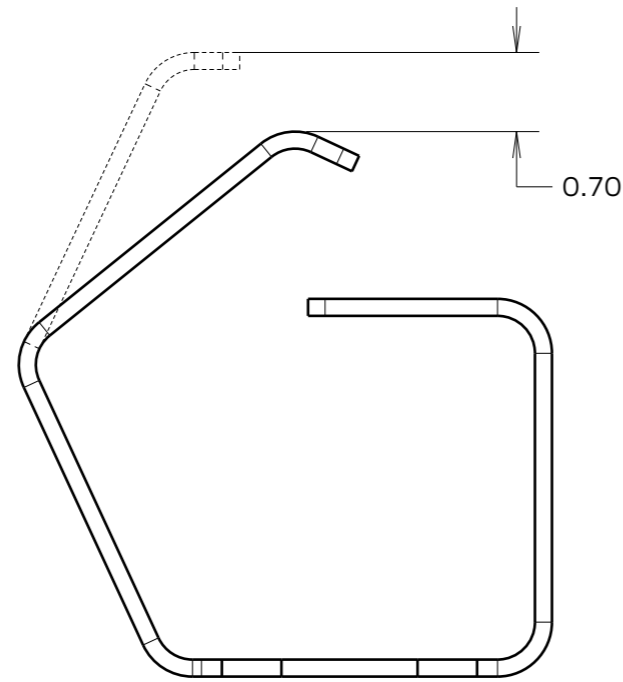
NOT TO SCALE

THIRD ANGLE PROJECTION

ALL DIMENSIONS IN mm

COMPONENT SPECIFICATION:
 MATERIAL = CUPRO NICKEL
 FINISH = 100% TIN OVER NICKEL
 (SEE C055XX FOR FULL COMPONENT SPECIFICATION)

S1931-46R
 DEFLECTION FROM ABOVE

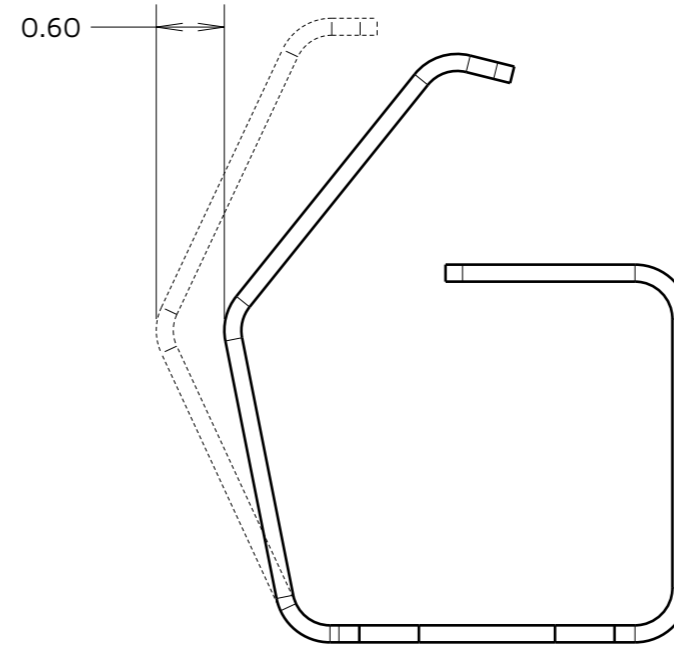


MAXIMUM RECOMMENDED HORIZONTAL
 DEFLECTION = 0.70mm

MINIMUM RECOMMENDED VERTICAL
 DEFLECTION = 0.20mm

MINIMUM FORCE OF 1.2N

S1931-46R
 DEFLECTION FROM FRONT



MAXIMUM RECOMMENDED VERTICAL
 DEFLECTION = 0.60mm

MINIMUM RECOMMENDED HORIZONTAL
 DEFLECTION = 0.25mm

MINIMUM FORCE OF 1.0N

RA	3	04.02.25	35675
NAME	ISS.	DATE	CN/CO
APPROVED:		R.ALEXANDER	
CHECKED:		R.PORTLOCK	
DRAWN:		R.PORTLOCK	

HARWIN

www.harwin.com

TOLERANCES
 X. = ±1mm
 X.X = ±0.50mm
 X.XX = ±0.20mm
 X.XXX = ±0.01mm
 ANGLES = ±5°
 UNLESS STATED

THIS DRAWING AND ANY
 INFORMATION OR DESCRIPTIVE
 MATTER SET OUT HEREON ARE
 CONFIDENTIAL AND COPYRIGHT
 PROPERTY OF THE HARWIN GROUP
 AND MUST NOT BE DISCLOSED,
 LOANED, COPIED OR USED FOR
 MANUFACTURING, TENDERING OR FOR
 ANY OTHER PURPOSE WITHOUT THEIR
 WRITTEN PERMISSION.

MATERIAL & FINISH:
 SEE ABOVE

TITLE:
**MULTI-DIRECTIONAL SPRING
 CONTACT IN TAPE AND REEL**

DRAWING NUMBER:
S1931-46R

SHT
 3
 OF
 3