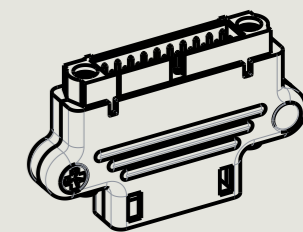
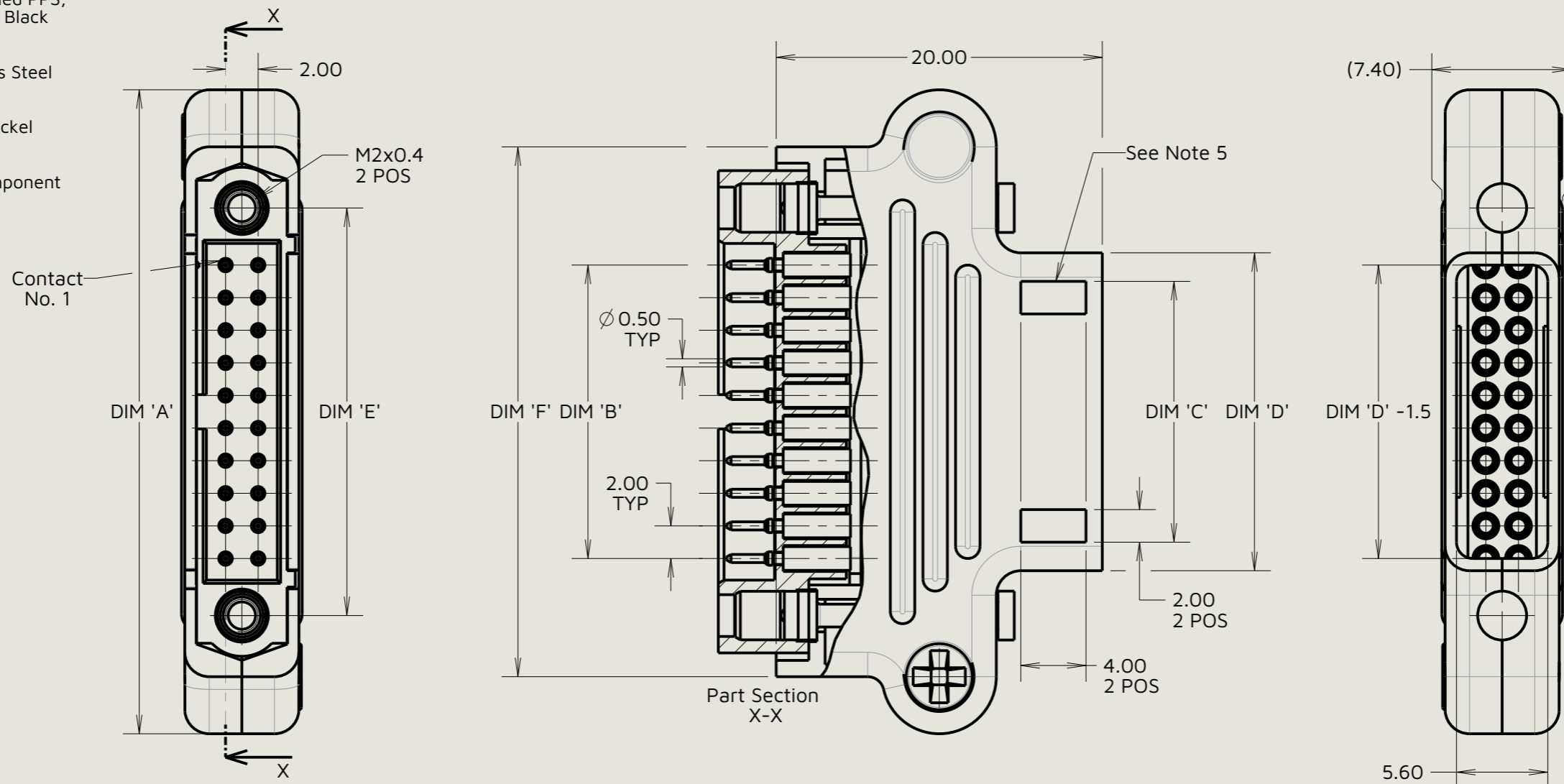


Customer Information Sheet

Specifications:
 Material:
 Cable Hood = 30% Glass-Filled Polyamide 46
 UL94V-0, Black
 Connector Housing = 30% Glass-Filled PPS,
 UL94V-0, Black
 Contact = Brass
 Jackscrew = Stainless Steel
 Cable Hood Fixing Screw = Stainless Steel
 Finish:
 Contact = Gold
 Cable Hood Fixing Screw = Black Nickel
 Packing:
 Bag
 For Complete Specification, See Component
 Specification C005XX (Latest Issue)



Scale 1:1



Part Number	No. Of Contacts	Part Dimensions					
		DIM 'A'	DIM 'B'	DIM 'C'	DIM 'D'	DIM 'E'	DIM 'F'
M80-9430605	6	25.50	4.00	N/A	5.50	11.00	18.50
M80-9430805	8	27.50	6.00	N/A	7.50	13.00	20.50
M80-9431005	10	29.50	8.00	2.00	9.50	15.00	22.50
M80-9431205	12	31.50	10.00	4.00	11.50	17.00	24.50
M80-9431405	14	33.50	12.00	6.00	13.50	19.00	26.50
M80-9432005	20	39.50	18.00	12.00	19.50	25.00	32.50
M80-9432605	26	45.50	24.00	18.00	22.50	31.00	38.50
M80-9433405	34	53.50	32.00	26.00	33.50	39.00	46.50
M80-9434205	42	61.50	40.00	34.00	41.50	47.00	54.50
M80-9435005	50	69.50	48.00	42.00	49.50	55.00	62.50

Order Code:
M80-943XX05
 Total No. of Contacts:
 06, 08, 10, 12, 14,
 20, 26, 34, 42, 50

JW	12	28.01.26	37709
Initials	Rev.	Date	CO
CP	3	12.11.09	10555

- Notes:
- Connectors are supplied with contacts, cable hood set, and cable hood fixing screws loose.
 - For extra contacts, use part number M80-1940005.
 - Recommended hand crimp tool = M22520/2-01 with positioner Z80-193. Refer to tooling instruction sheet IS-01 for complete crimping instructions.
 - Contact insertion and extraction tool = Z80-280. Refer to tooling instruction sheet IS-25 for assembly instructions.
 - No cable tie slots on M80-9430605 and M80-9430805.
 - Compatible wire size = 22AWG, with MAX insulation ϕ 1.10mm. Strip wire by 2.00mm
 - See Component Specification C049XX (latest issue) to see recommendations on wire specification and type.



This drawing and any information or descriptive matter set out hereon are confidential and copyright property of the Harwin group and must not be disclosed, loaned, copied or used for manufacturing, tendering or for any other purpose without their written permission.

TOLERANCES
 X. = ± 0.50 mm
 X.X = ± 0.30 mm
 X.XX = ± 0.10 mm
 X.XXX = ± 0.01 mm
 Angles = $\pm 5^\circ$
 Unless stated

Third angle projection

 Sheet scale: 3:1
 Do not scale
 Sheet size: A3

MATERIAL:
 See Specification
FINISH:
 See Specification

Title:
 Datamate Crimp (22 AWG) Male Plug
 Straight Cable Hood Kit
Drawing number:
M80-943XX05
 SHT
 2
 OF
 2