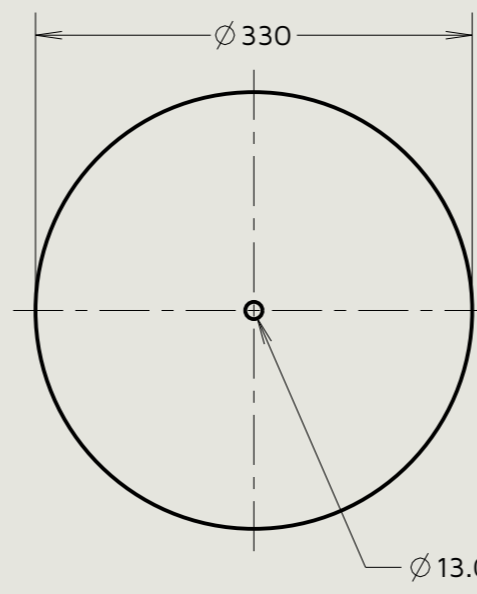
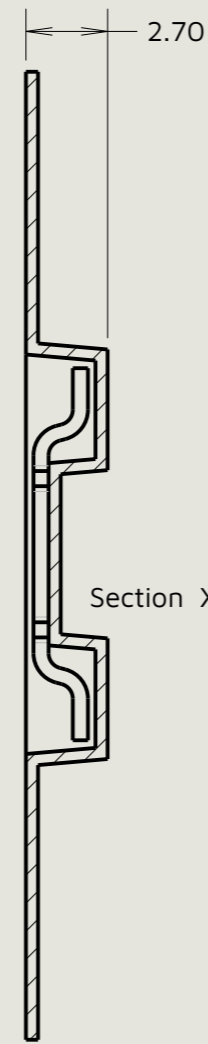
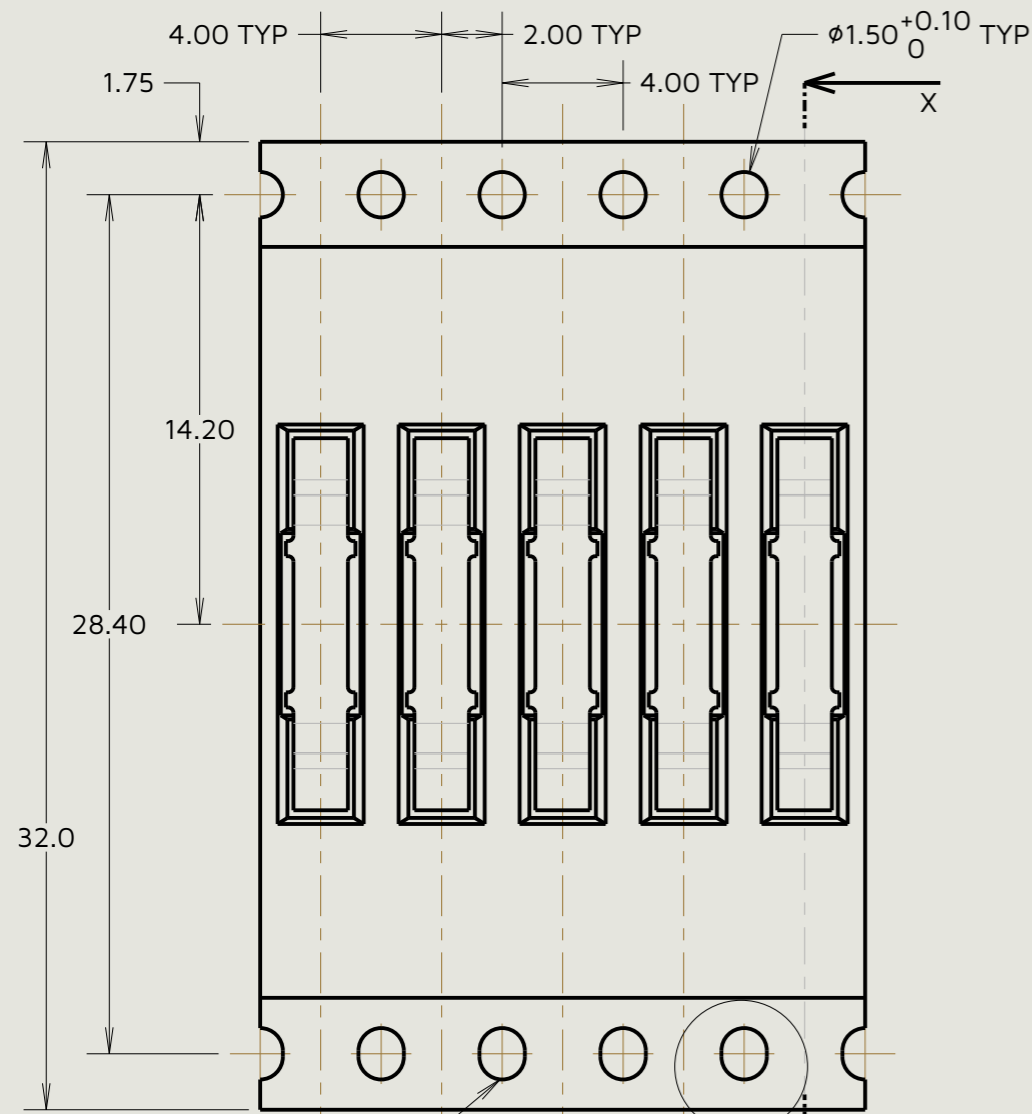
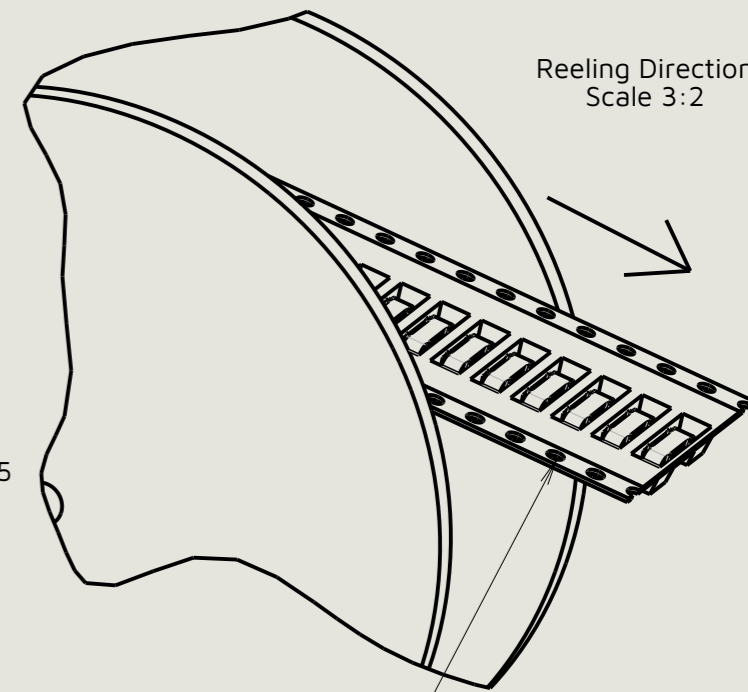
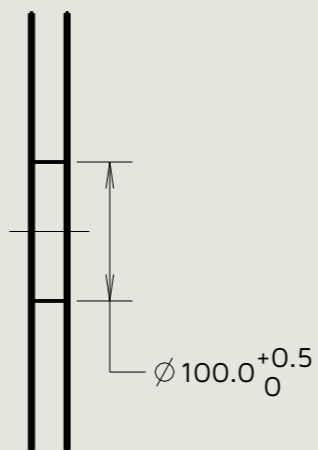


Customer Information Sheet

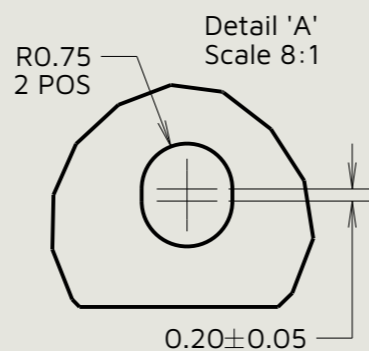
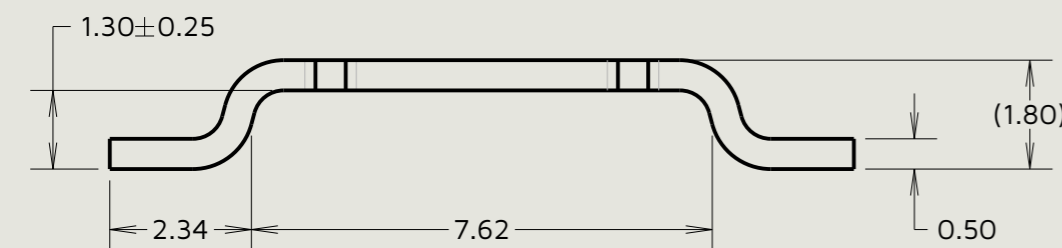
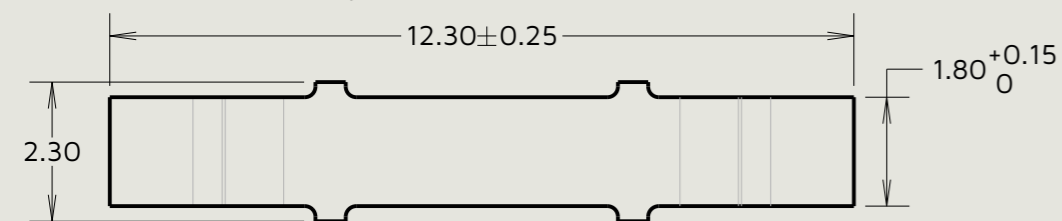


Reel Details



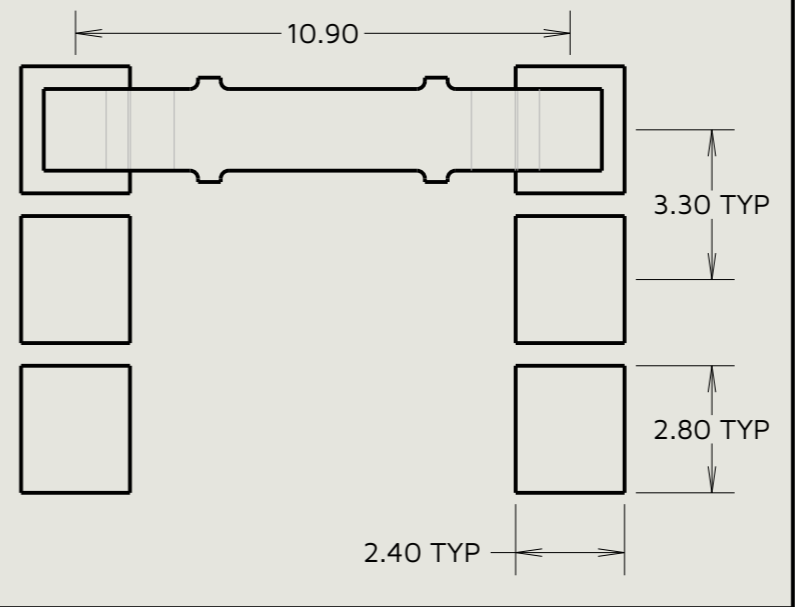
Reeling Direction
Scale 3:2

Elongated Sprocket Holes
Component Details (Scale: 8:1)
Detail 'A'

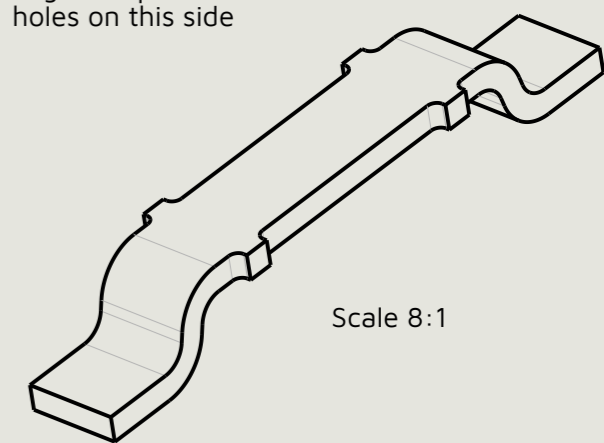


Detail 'A'
Scale 8:1

Recommended PCB Layout
Tolerance ± 0.05 (Scale: 6:1)



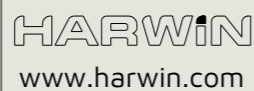
Elongated sprocket holes on this side



Scale 8:1

AB	12	06.01.26	37420
Initials	Rev.	Date	CO
JAE	2	02.08.04	8105

- Notes
- Quantity per reel = 5,000.
 - This product is taped and reeled in accordance with EIA-481.
 - For loose components, see S1621-XX.



This drawing and any information or descriptive matter set out hereon are confidential and copyright property of the Harwin group and must not be disclosed, loaned, copied or used for manufacturing, tendering or for any other purpose without their written permission.

TOLERANCES
 X. = ± 0.50 mm
 X.X = ± 0.30 mm
 X.XX = ± 0.10 mm
 X.XXX = ± 0.01 mm
 Angles = $\pm 5^\circ$
 Unless stated

Third angle projection

 Sheet scale: 4:1
 Do not scale
 Sheet size: A3

MATERIAL:
 See above
FINISH:
 See above

Title:
 Surface Mount Jumper (Tape and Reeled)
Drawing number:
S1621-46R
 SHT 2 OF 2