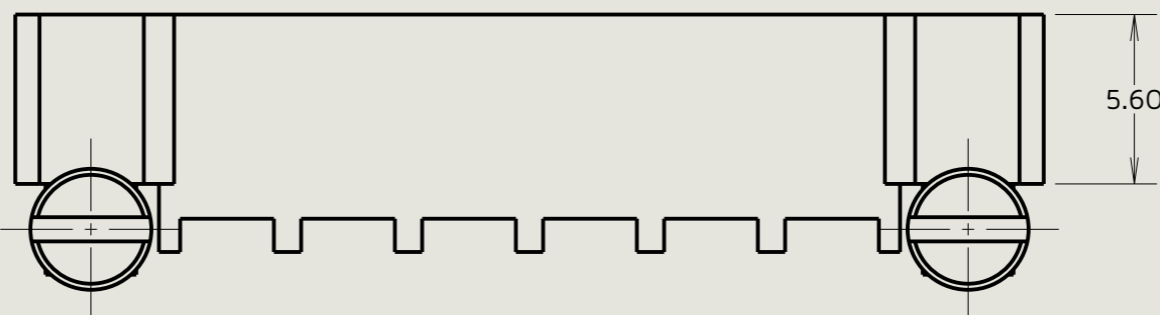
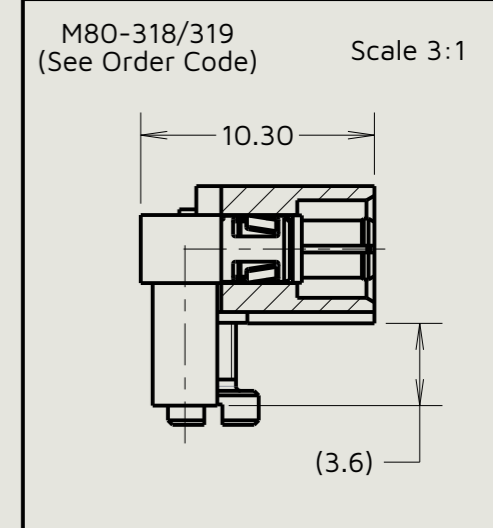
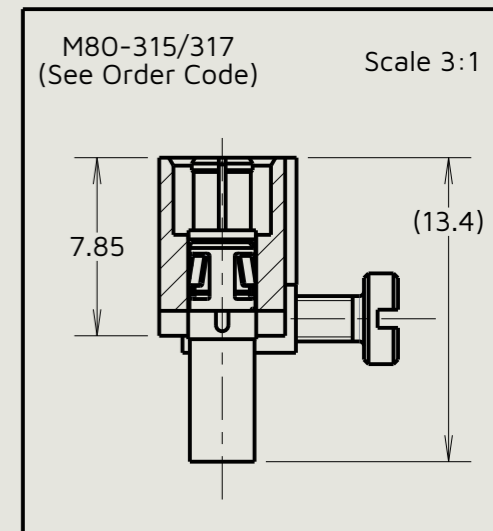
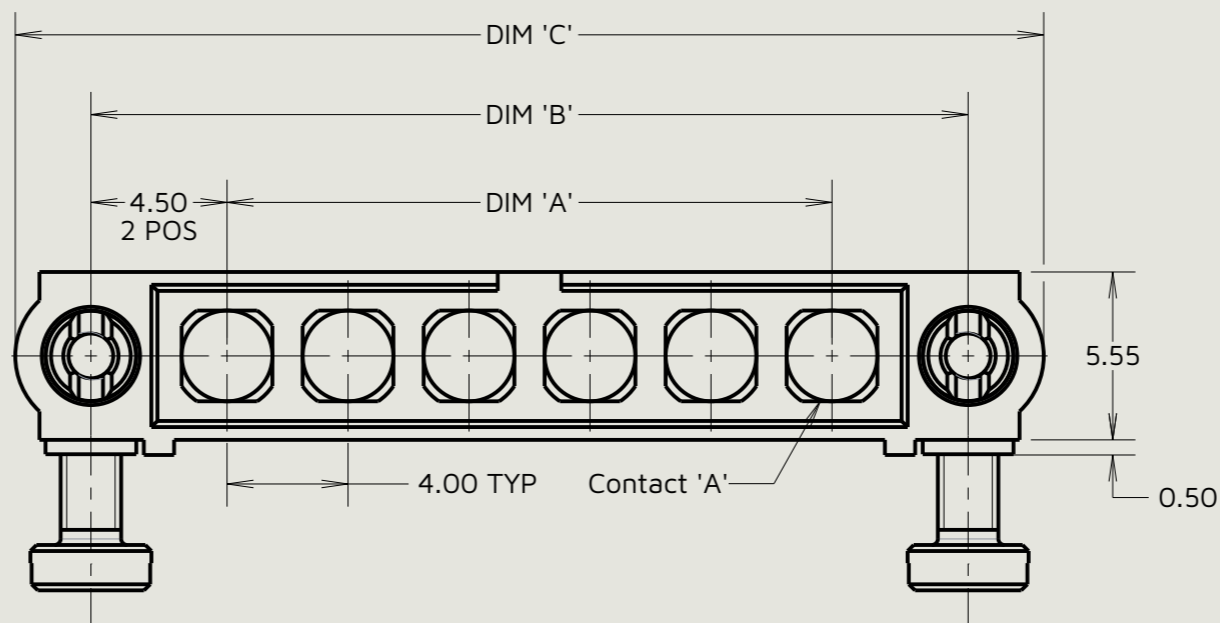


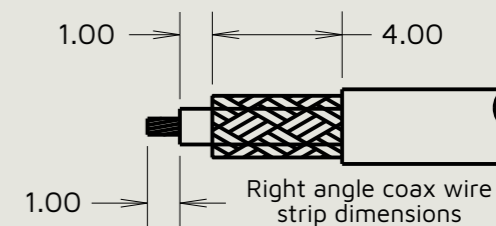
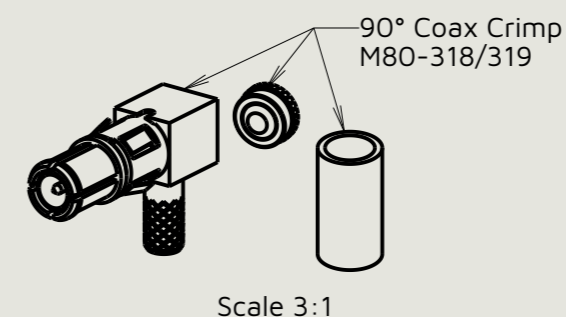
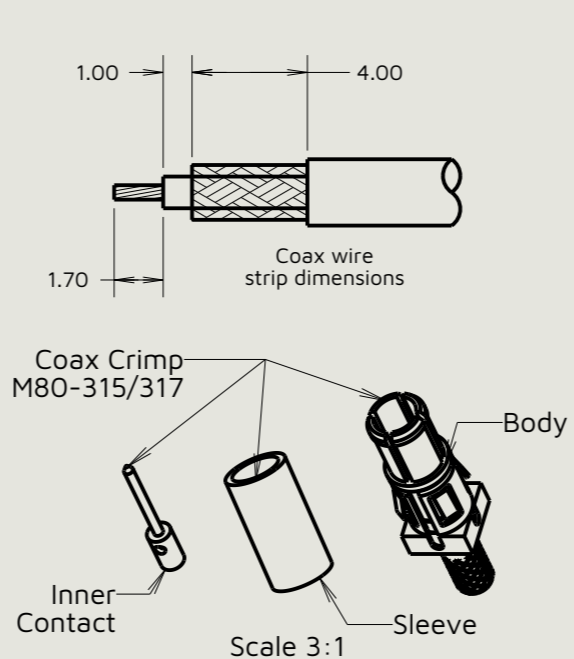
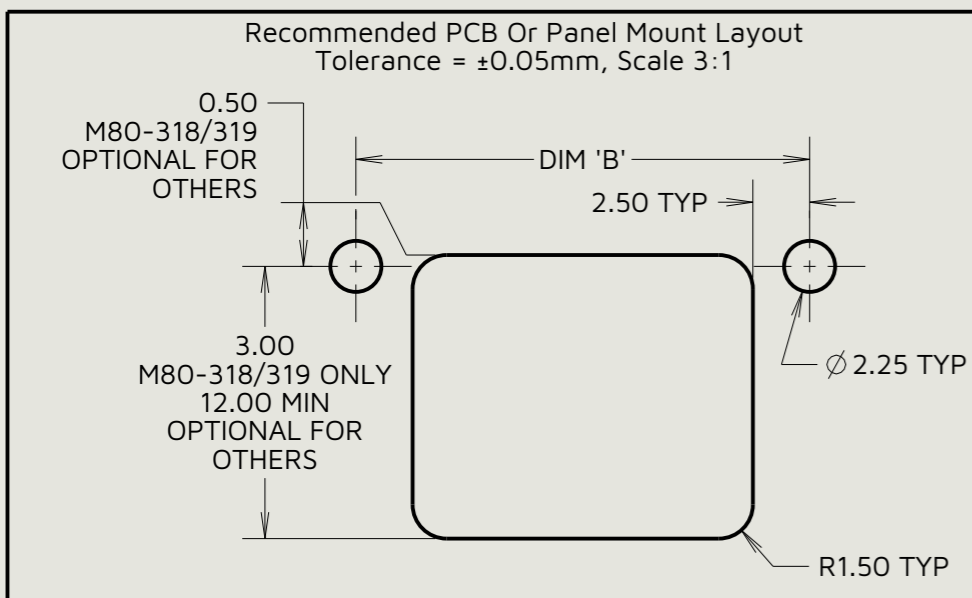
Customer Information Sheet

Specifications:
 Material:
 Housing: Glass Filled PPS, UL94V-0, Black
 Power Contact: Copper Alloy
 Coax Contact:
 Body = Copper Alloy
 Inner Contact = Copper Alloy
 Insulator = PTFE
 Finish:
 Power Contact: Gold
 Coax Contact: Body, Inner Contact = Gold
 Packing:
 Tube
 For Complete Specification See Component Specification C005XX (Latest Issue)



Coax Crimp Contacts Only

Dimension	Calculation
DIM 'A'	4 x Total No. Of Contacts - 4.00
DIM 'B'	4 x Total No. Of Contacts + 5.00
DIM 'C'	4 x Total No. Of Contacts + 10.0



Order Code:
M80-5000000MD-XX-XXX-00-000
 Total No. Of Contacts: _____
 02 To 12
 Special Contacts: _____
 315 = Coax Contact 2.00mm Crimp M80-315
 317 = Coax Contact 2.70mm Crimp M80-317
 318 = Coax Contact 2.00mm Right Angle Crimp M80-318
 319 = Coax Contact 2.70mm Right Angle Crimp M80-319

MJ	4	28.01.26	37709
Initials	Rev.	Date	CO
SB	1	12.07.17	-----

- Notes:
- Connectors are supplied with contacts loose.
 - Coax contact is supplied as a kit of parts: Body, Main Insulator, Inner Contact and Latching Collar are pre-assembled. Sleeve and Insulated End Plug assembly are separate.
 - For extra coax contacts, use part numbers M80-315/317/318/319.
 - Coax contact extraction tool = Z80-290.
 - Recommended hand crimp tool for inner coax contact = Z80-292 with positioner Z80-291. Recommended hand crimp tool and die set for sleeve = Z80-293.
 - Instruction sheets are available.



This drawing and any information or descriptive matter set out hereon are confidential and copyright property of the Harwin group and must not be disclosed, loaned, copied or used for manufacturing, tendering or for any other purpose without their written permission.

TOLERANCES
 X. = ±0.50mm
 X.X = ±0.30mm
 X.XX = ±0.10mm
 X.XXX = ±0.01mm
 Angles = ±5°
 Unless stated

Third angle projection

 Sheet scale: 4:1
 Do not scale
 Sheet size: A3

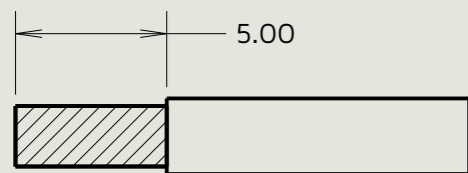
MATERIAL:
 See Specification
 FINISH:
 See Specification

Title:
Datamate Mix Tek Male Plug 101Lok Connector
 Drawing number:
M80-5000000MD-XX-XXX-00-000
 SHT 4 OF 6

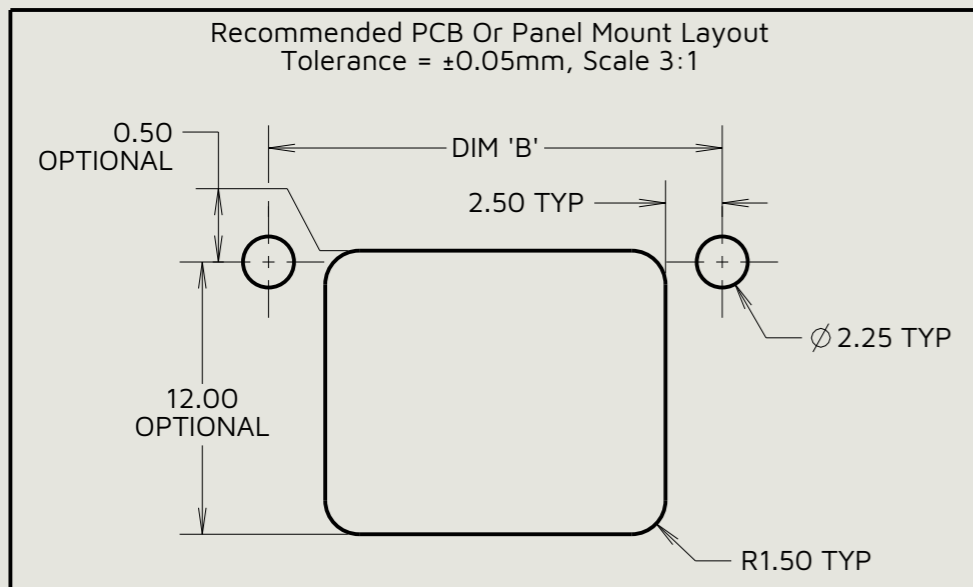
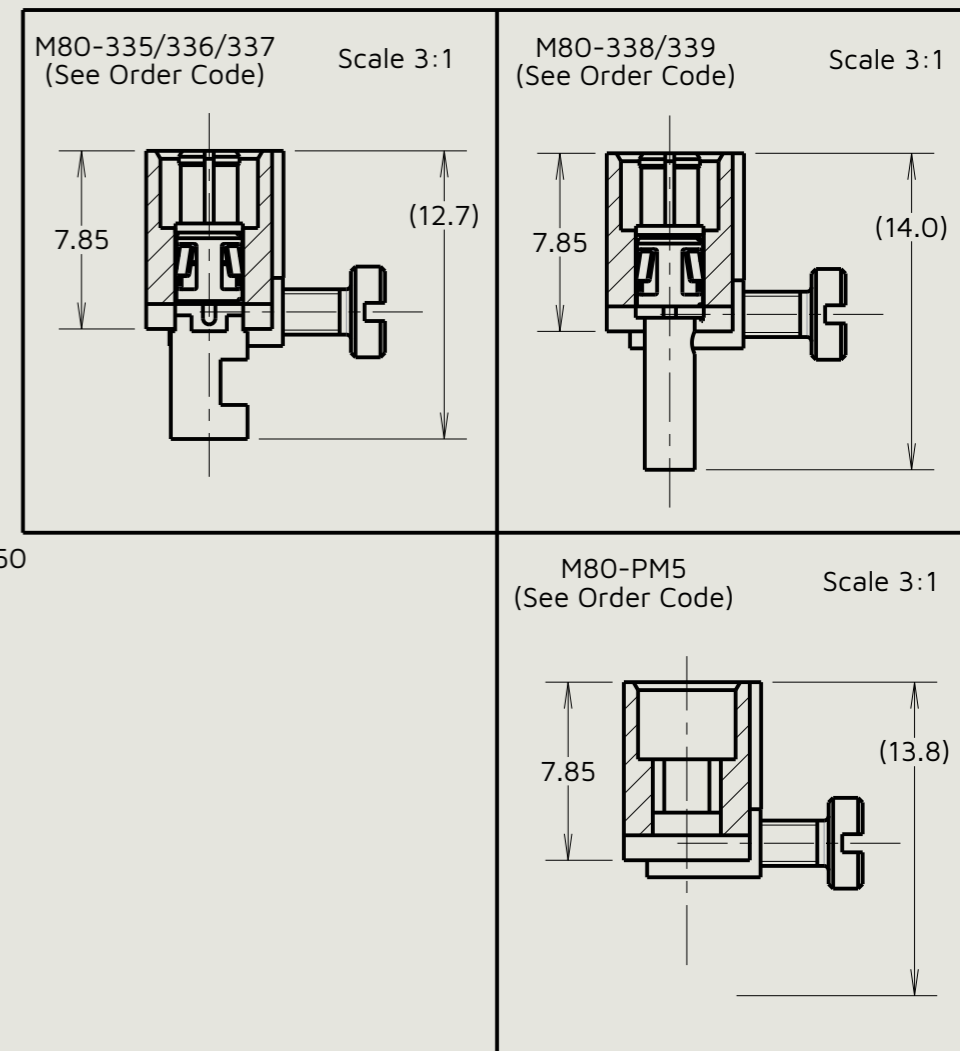
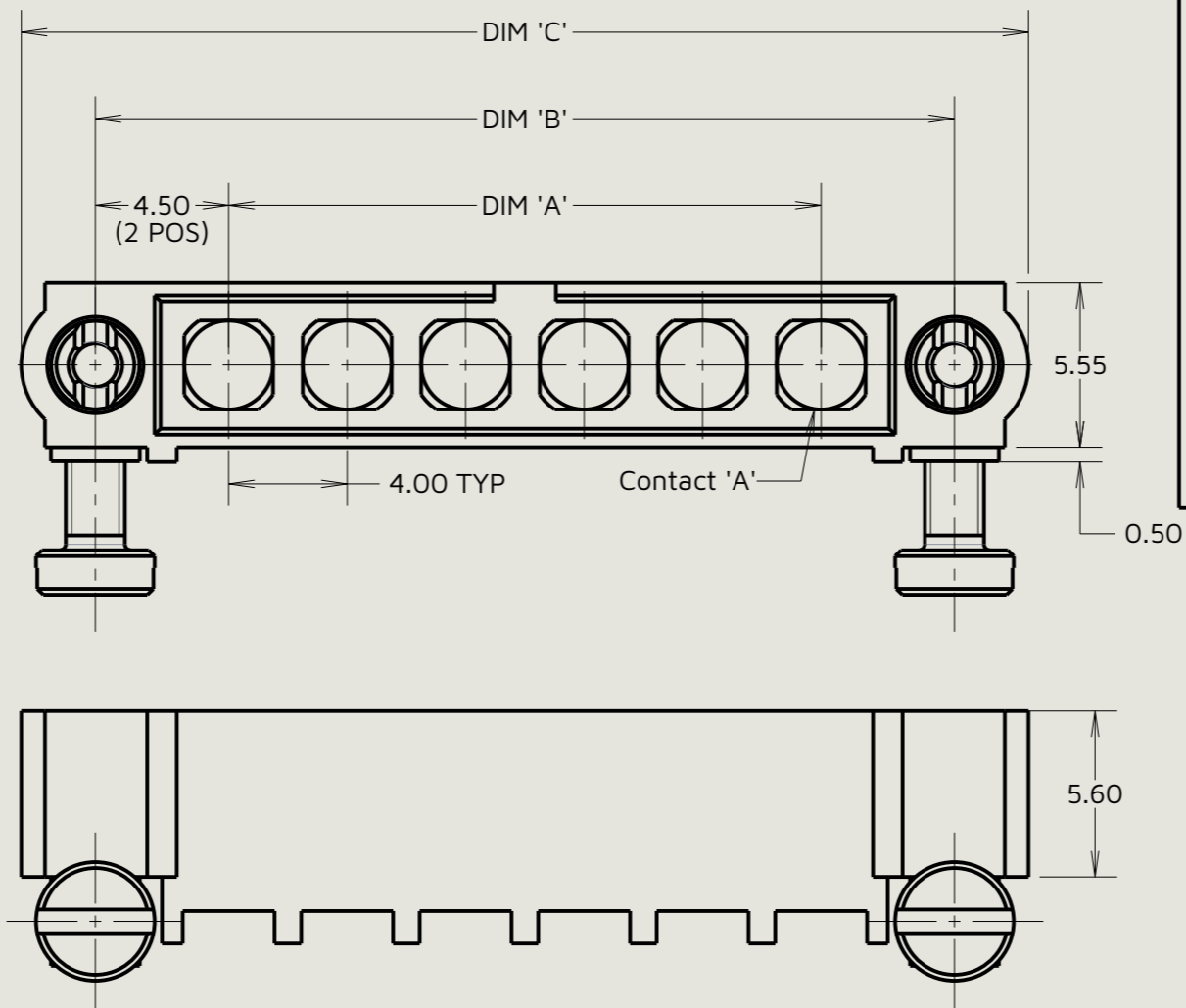
Customer Information Sheet

Specifications:
 Material:
 Housing: Glass Filled PPS, UL94V-0, Black
 Power Contact: Copper Alloy
 Coax Contact:
 Body = Copper Alloy
 Inner Contact = Copper Alloy
 Insulator = PTFE
 Finish:
 Power Contact: Gold
 Coax Contact: Body, Inner Contact = Gold
 Packing:
 Tube
 For Complete Specification See Component Specification C005XX (Latest Issue)

Power Crimp & Solder Contacts Only



Power Cable Stripping Dimensions



Dimension	Calculation
DIM 'A'	4 x Total No. Of Contacts - 4.00
DIM 'B'	4 x Total No. Of Contacts + 5.00
DIM 'C'	4 x Total No. Of Contacts + 10.0

Order Code:
M80-5000000MD-XX-XXX-00-000
 Total No. Of Contacts: _____
 02 To 12
 Special Contacts: _____
 335 = Power Contact 12AWG Solder M80-335
 336 = Power Contact 14AWG Solder M80-336
 337 = Power Contact 16AWG Solder M80-337
 338 = Power Contact 18AWG Solder/Crimp M80-338
 339 = Power Contact 20AWG Solder/Crimp M80-339
 PM5 = Power Contact 10AWG Solder M80-PM5

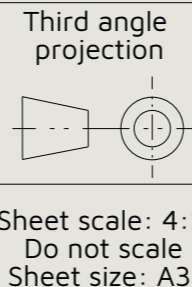
MJ	4	28.01.26	37709
Initials	Rev.	Date	CO
SB	1	12.07.17	-----

- Notes:
- Connectors are supplied with contacts loose.
 - For extra power contacts use part numbers M80-335/336/337/338/339/PM5.
 - Power contact extraction tool = Z80-290.
 - Recommended hand crimp tool for contacts M80-338/339 = Z80-294 and positioner Z80-295.
 - Instruction sheets are available.
 - M80-5000000MD-06-XXX-00-000 is shown for illustrative purposes only, see order code for details.



This drawing and any information or descriptive matter set out hereon are confidential and copyright property of the Harwin group and must not be disclosed, loaned, copied or used for manufacturing, tendering or for any other purpose without their written permission.

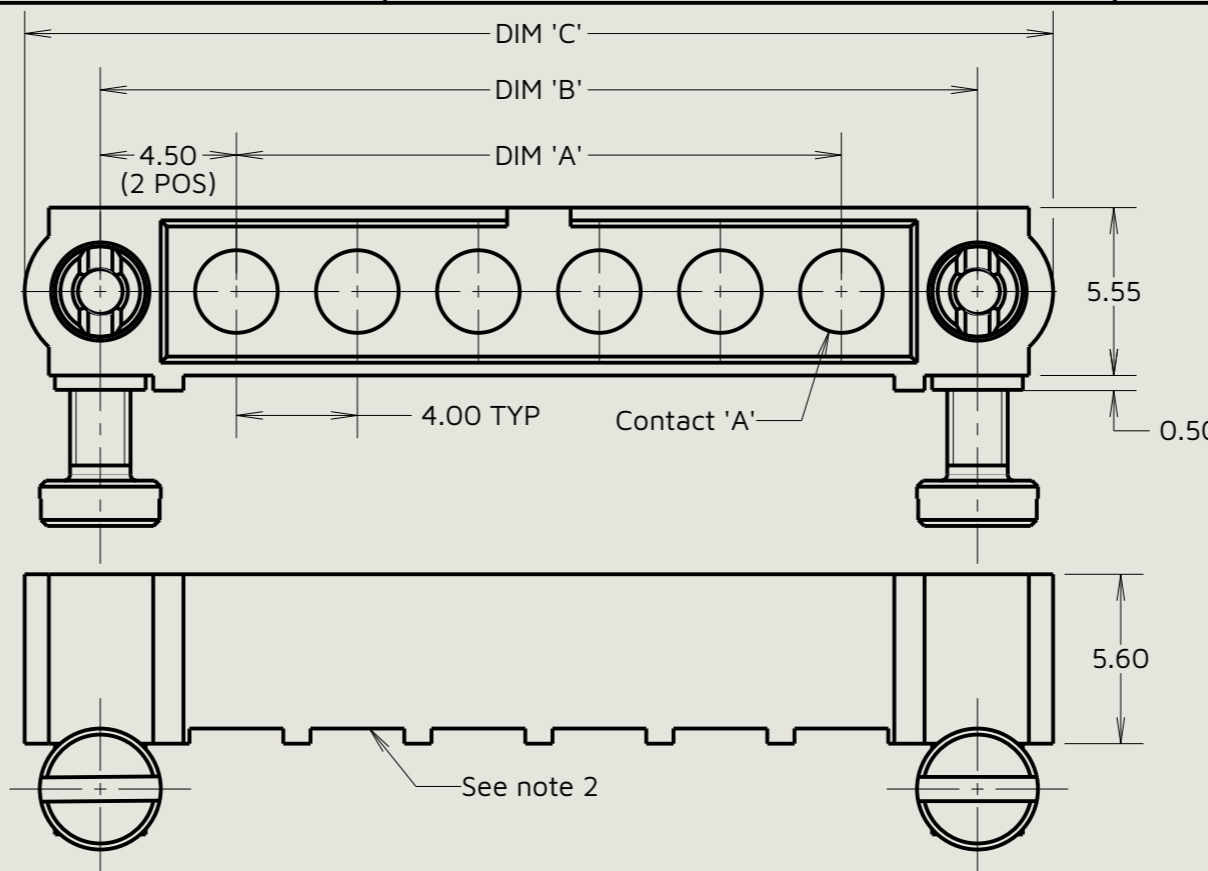
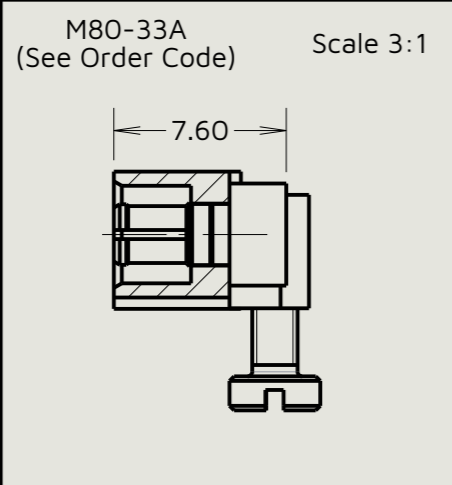
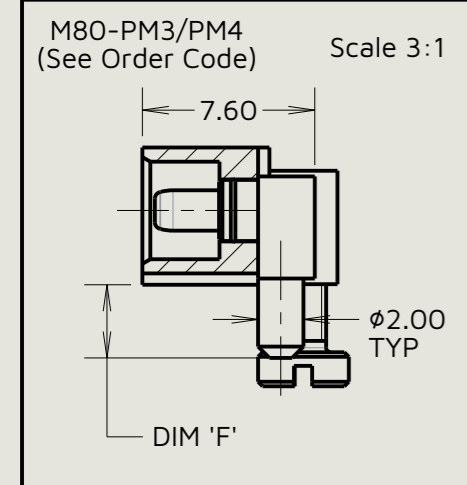
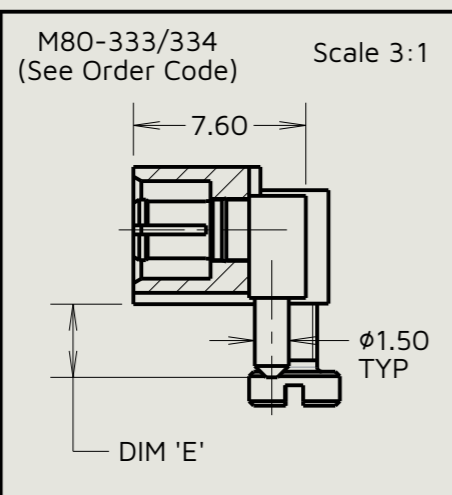
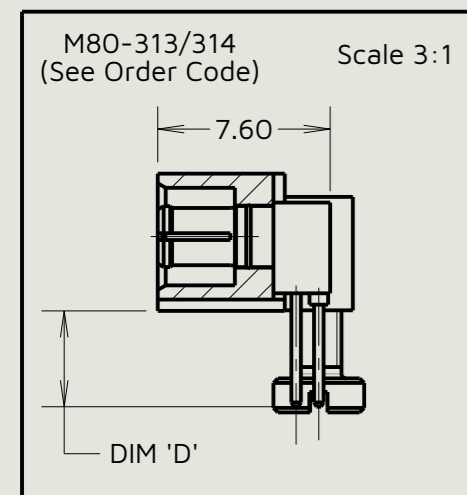
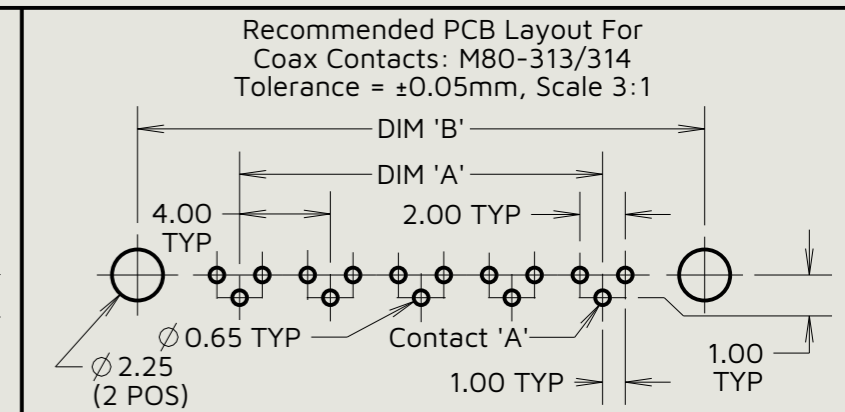
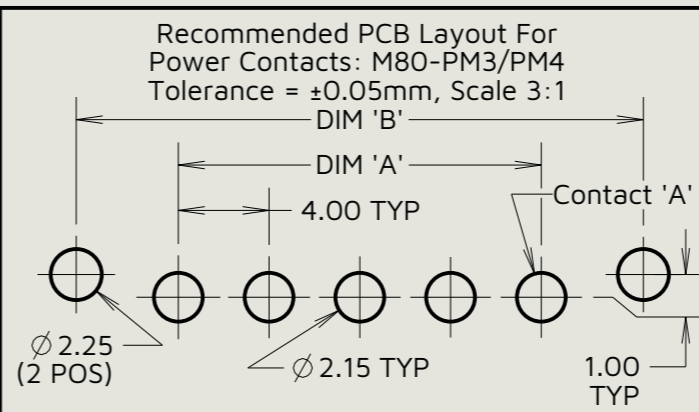
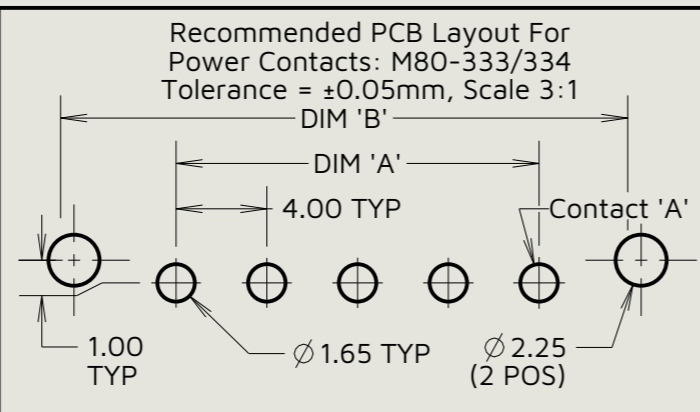
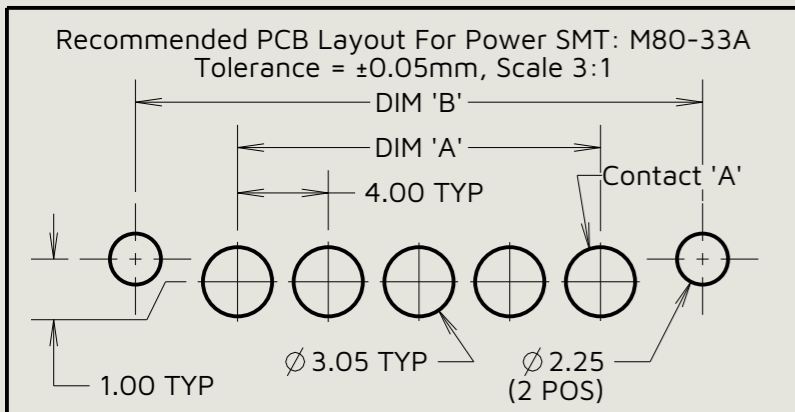
TOLERANCES
 X. = ±0.50mm
 X.X = ±0.30mm
 X.XX = ±0.10mm
 X.XXX = ±0.01mm
 Angles = ±5°
 Unless stated



MATERIAL:
 See Specification
 FINISH:
 See Specification

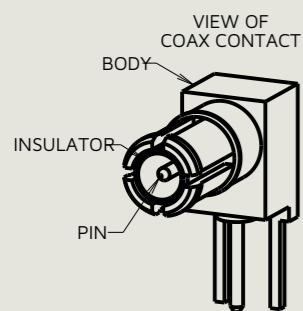
Title:
 Datamate Mix Tek Male Plug 101Lok Connector
 Drawing number:
M80-5000000MD-XX-XXX-00-000
 SHT 5 OF 6

Customer Information Sheet



Specifications:
Material:
 Housing: Glass Filled PPS, UL94V-0, Black
 Power Contact: Copper Alloy
 Coax Contact:
 Body = Copper Alloy
 Inner Contact = Copper Alloy
 Insulator = PTFE
Finish:
 Power Contact: Gold
 Coax Contact: Body, Inner Contact = Gold
Packing:
 Tube
 For Complete Specification See Component Specification C005XX (Latest Issue)

Horizontal PC Tail & SMT Contacts Only



Notes:
 1. M80-5000000MD-06-XXX-00-000 is shown for illustration purposes only, see order code for variants.
 2. Contacts are hidden for visualisation purposes.

Table 1: Dimension Variants

Dimension	Calculation
DIM 'A'	4 x Total No. Of Contacts - 4.00
DIM 'B'	4 x Total No. Of Contacts + 5.00
DIM 'C'	4 x Total No. Of Contacts + 10.0
DIM 'D'	M80-313 = 2.7mm, M80-314 = 4.2mm
DIM 'E'	M80-333 = 3.2mm, M80-334 = 4.7mm
DIM 'F'	M80-PM3 = 3.2mm, M80-PM4 = 4.7mm

Order Code:
M80-5000000MD-XX-XXX-00-000
 Total No. Of Contacts: _____
 02 To 12
 Special Contacts: _____
 313 = Coax Contact 3.0mm PC Tail M80-313
 314 = Coax Contact 4.5mm PC Tail M80-314
 333 = 20A Power Contact 3.5mm Right Angle PC Tail M80-333
 334 = 20A Power Contact 5.0mm Right Angle PC Tail M80-334
 PM3 = 40A Power Contact 3.5mm Right Angle PC Tail M80-PM3
 PM4 = 40A Power Contact 5.0mm Right Angle PC Tail M80-PM4
 33A = Power Contact Right Angle SMT M80-33A

MJ	4	28.01.26	37709
Initials	Rev.	Date	CO
SB	1	12.07.17	-----

 www.harwin.com	This drawing and any information or descriptive matter set out hereon are confidential and copyright property of the Harwin group and must not be disclosed, loaned, copied or used for manufacturing, tendering or for any other purpose without their written permission.	TOLERANCES X. = ±0.50mm X.X = ±0.30mm X.XX = ±0.10mm X.XXX = ±0.01mm Angles = ±5° Unless stated	Third angle projection Sheet scale: 4:1 Do not scale Sheet size: A3	MATERIAL: See Specification FINISH: See Specification	Title: Datamate Mix Tek Male Plug 101Lok Connector Drawing number: M80-5000000MD-XX-XXX-00-000
		SHT 6 OF 6			