

Customer Information Sheet

IF IN DOUBT - ASK

©

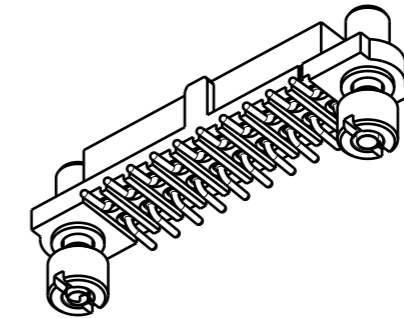
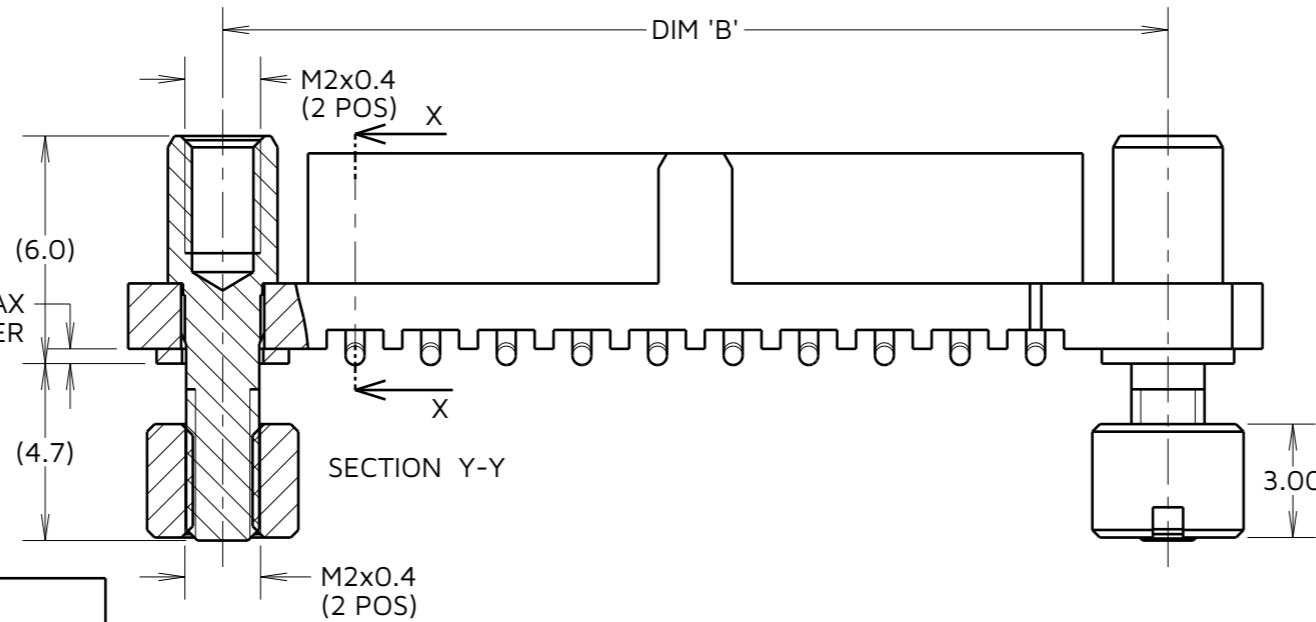
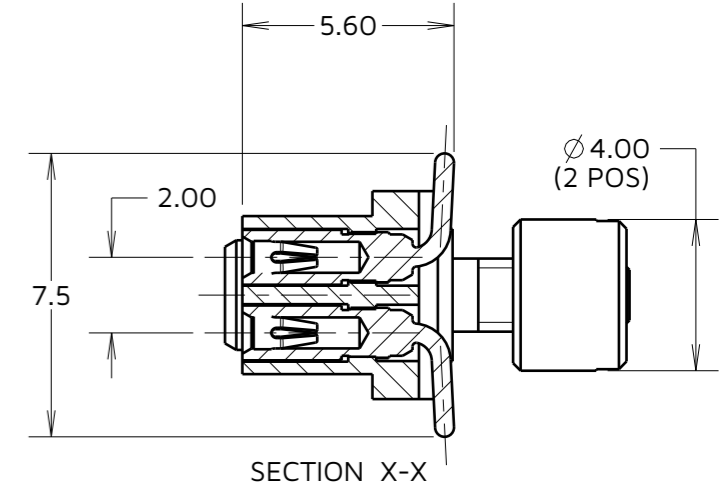
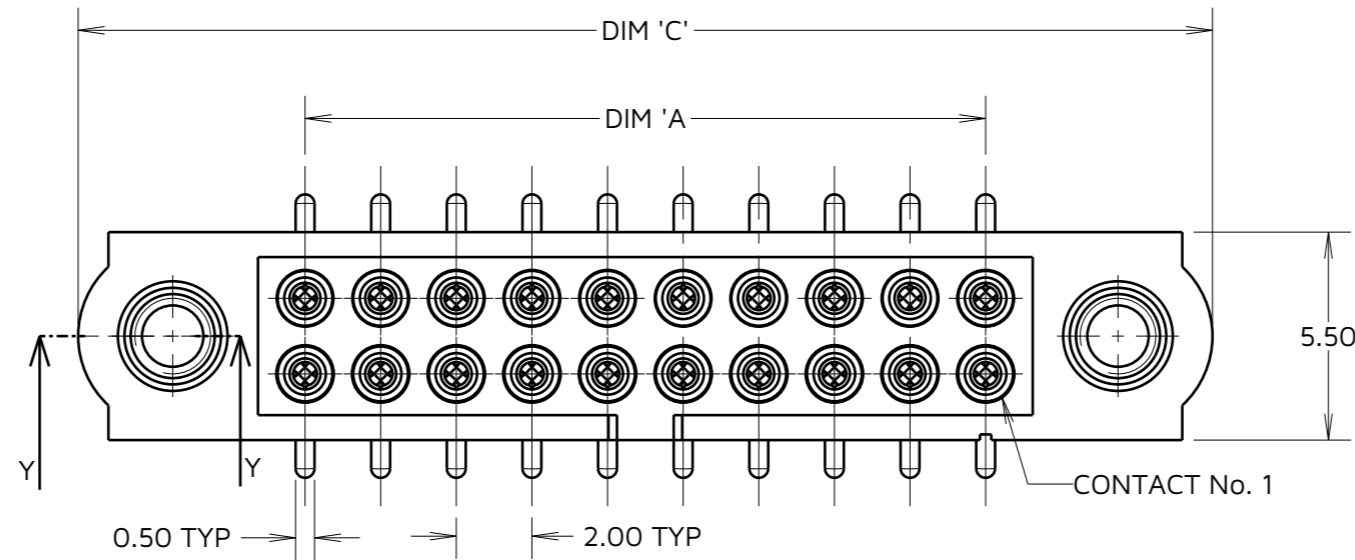
NOT TO SCALE

THIRD ANGLE PROJECTION

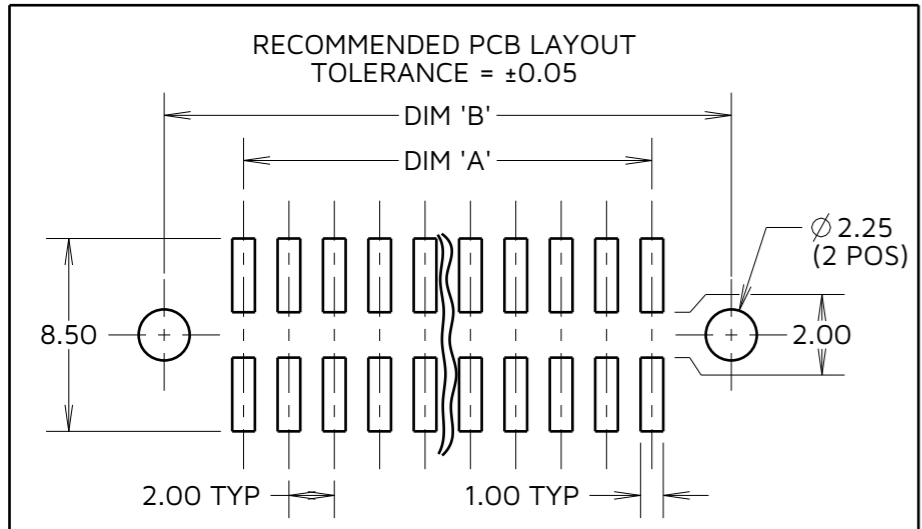
ALL DIMENSIONS IN mm

SPECIFICATIONS:

MATERIAL:
 HOUSING = GLASS-FILLED PPS, UL94V-0, BLACK
 CONTACT CLIP = BERYLLIUM COPPER
 CONTACT SHELL = COPPER ALLOY
 JACKSCREW, NUT, WASHER = STAINLESS STEEL
FINISH:
 01 = GOLD CLIP, TIN/LEAD SHELL
 05 = GOLD CLIP, GOLD SHELL
 42 = GOLD CLIP, 100% TIN OVER NICKEL SHELL
PACKING:
 TUBE.
 FOR COMPLETE SPECIFICATION, SEE
 COMPONENT SPEC C005XX (LATEST ISSUE)



PART No.	WEIGHT (g)
M80-4S104XXF9	1.52
M80-4S106XXF9	1.66
M80-4S108XXF9	1.81
M80-4S110XXF9	1.95
M80-4S112XXF9	2.09
M80-4S114XXF9	2.23
M80-4S116XXF9	2.37
M80-4S118XXF9	2.51
M80-4S120XXF9	2.66
M80-4S122XXF9	2.80
M80-4S124XXF9	2.94
M80-4S126XXF9	3.08
M80-4S128XXF9	3.22
M80-4S130XXF9	3.37
M80-4S132XXF9	3.51
M80-4S134XXF9	3.65
M80-4S136XXF9	3.79
M80-4S138XXF9	3.93
M80-4S140XXF9	4.07
M80-4S142XXF9	4.22
M80-4S144XXF9	4.36
M80-4S146XXF9	4.50
M80-4S148XXF9	4.64
M80-4S150XXF9	4.78



DIMENSION	CALCULATION
DIM 'A'	TOTAL No. OF CONTACTS - 2.00
DIM 'B'	TOTAL No. OF CONTACTS + 5.00
DIM 'C'	TOTAL No. OF CONTACTS + 10.0

EXAMPLE: CONNECTOR WITH 20 CONTACTS, GOLD CLIP AND 100% TIN OVER NICKEL SHELL, M80-4S12042F9

DIM 'A' = 18.00mm, DIM 'B' = 25.00mm, DIM 'C' = 30.0mm

ORDER CODE:
M80-4S1XXXXF9

TOTAL No. OF CONTACTS _____
 04 TO 50
 (EVEN NUMBERS ONLY)

FINISH CODE _____
 01 - GOLD CLIP, TIN/LEAD SHELL
 05 - GOLD CLIP, GOLD SHELL
 42 - GOLD CLIP, 100% TIN OVER NICKEL SHELL

MJ	8	07.03.25	35815
NAME	ISS.	DATE	CN/CO
APPROVED:	M. JELLEY		
CHECKED:	A. YEOMANS		
DRAWN:	R. ADDE		

- NOTES:**
- BOARD MOUNT NUTS AND WASHERS SUPPLIED AS KIT, NOT ASSEMBLED TO CONNECTOR.
 - SUPPLIED M2 WASHERS MUST BE ASSEMBLED BETWEEN MOULDING AND PCB TO PREVENT BOWING WHEN ASSEMBLING BM NUTS.
 - M80-4S120XXF9 IS SHOWN FOR ILLUSTRATION PURPOSES ONLY, SEE ORDER CODE FOR VARIANTS



TOLERANCES
 X. = ±1mm
 X.X = ±0.50mm
 X.XX = ±0.20mm
 X.XXX = ±0.01mm
 ANGLES = ±5°
 UNLESS STATED

THIS DRAWING AND ANY INFORMATION OR DESCRIPTIVE MATTER SET OUT HEREON ARE CONFIDENTIAL AND COPYRIGHT PROPERTY OF THE HARWIN GROUP AND MUST NOT BE DISCLOSED, LOANED, COPIED OR USED FOR MANUFACTURING, TENDERING OR FOR ANY OTHER PURPOSE WITHOUT THEIR WRITTEN PERMISSION.

MATERIAL & FINISH:
 SEE ABOVE

TITLE: DATAMATE J-TEK FEMALE VERTICAL SMT CONNECTOR ASSEMBLY

DRAWING NUMBER: M80-4S1XXXXF9

SHT 2 OF 2