

Customer Information Sheet

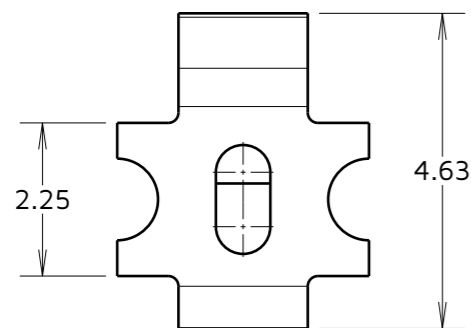
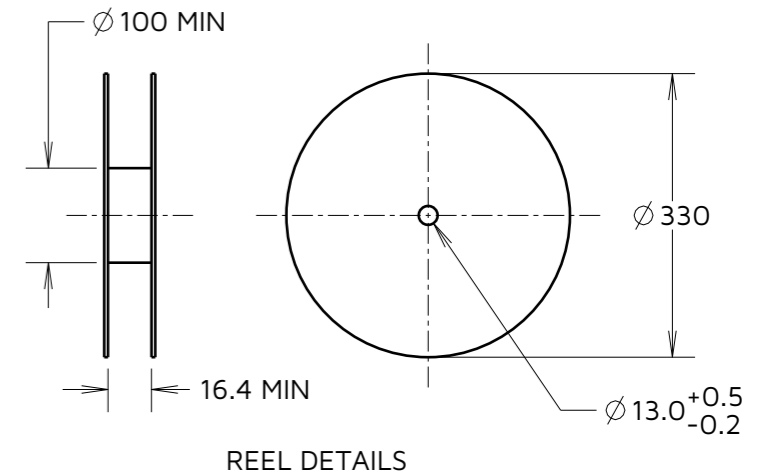
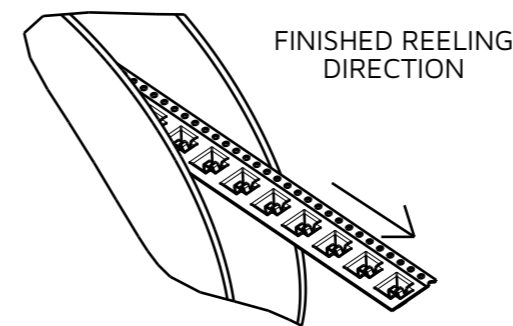
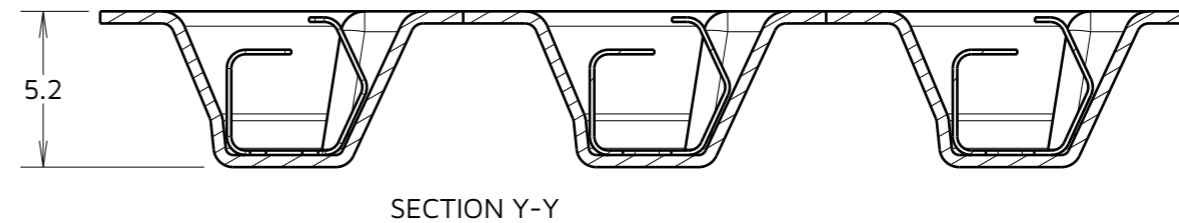
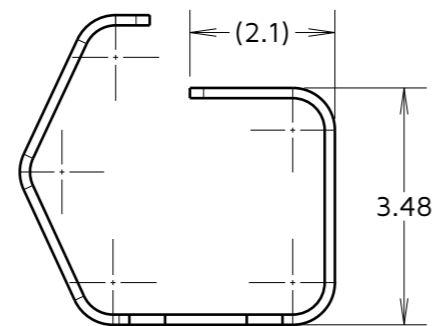
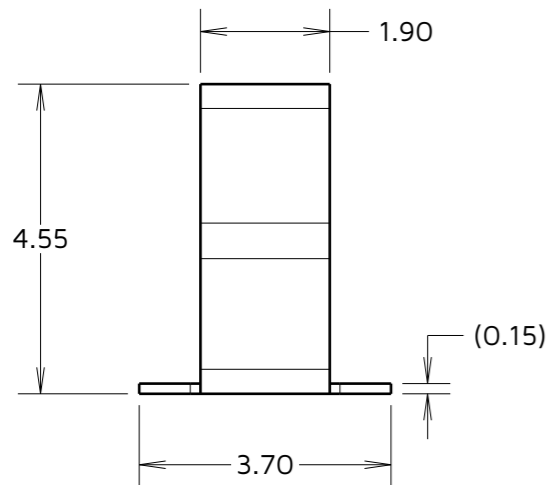
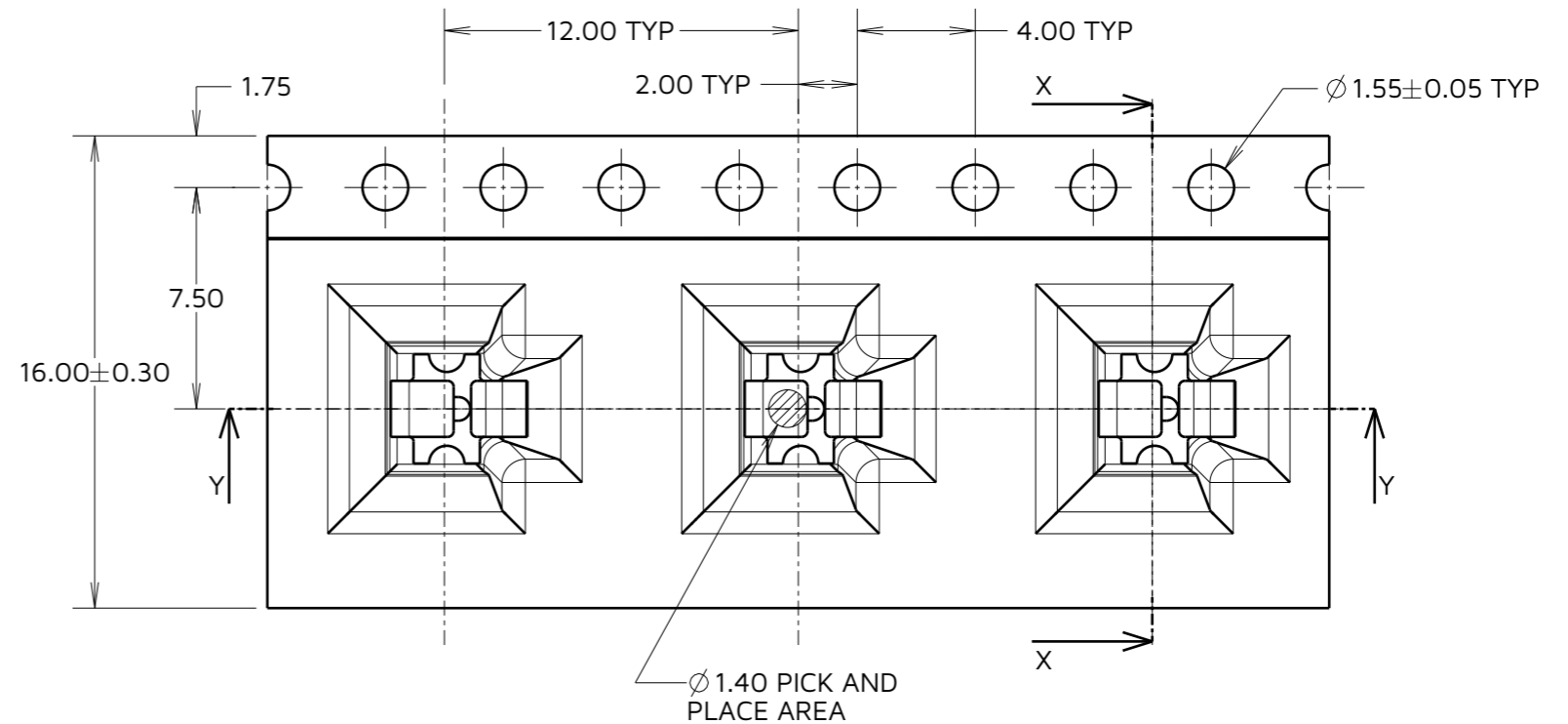
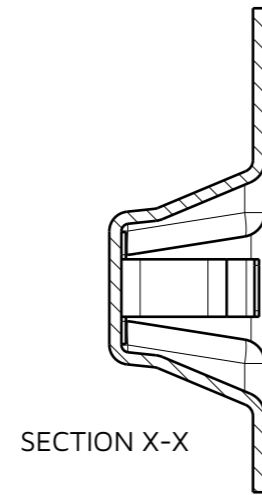
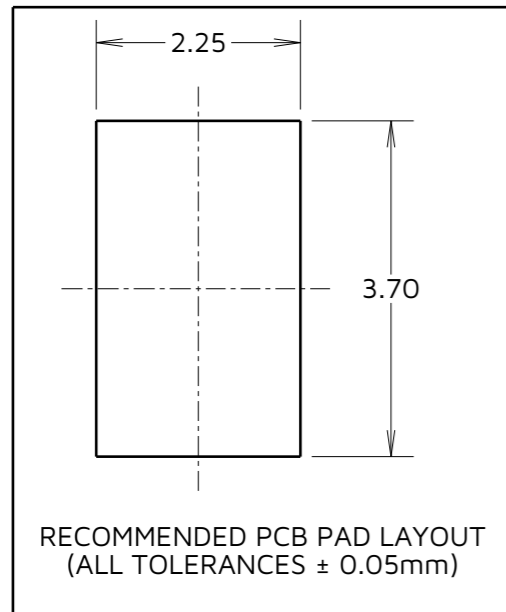
IF IN DOUBT - ASK

©

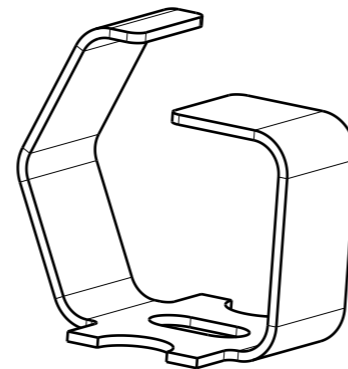
NOT TO SCALE

THIRD ANGLE PROJECTION

ALL DIMENSIONS IN mm



COMPONENT DETAILS



- NOTES:
1. QUANTITY OF COMPONENTS PER REEL = 1000.
 2. THIS PRODUCT IS TAPED AND REELED IN GENERAL ACCORDANCE WITH EIA-481 (ELECTRONICS INDUSTRIES ASSOCIATION).
 3. SEE C055XX (LATEST ISSUE) FOR FULL COMPONENT SPECIFICATION.

HARWIN

www.harwin.com

TOLERANCES
X. = $\pm 1\text{mm}$
X.X = $\pm 0.50\text{mm}$
X.XX = $\pm 0.20\text{mm}$
X.XXX = $\pm 0.01\text{mm}$
ANGLES = $\pm 5^\circ$
UNLESS STATED

THIS DRAWING AND ANY INFORMATION OR DESCRIPTIVE MATTER SET OUT HEREON ARE CONFIDENTIAL AND COPYRIGHT PROPERTY OF THE HARWIN GROUP AND MUST NOT BE DISCLOSED, LOANED, COPIED OR USED FOR MANUFACTURING, TENDERING OR FOR ANY OTHER PURPOSE WITHOUT THEIR WRITTEN PERMISSION.

MATERIAL & FINISH:
SEE SHEET 3

TITLE:
MULTI-DIRECTIONAL SPRING CONTACT
IN TAPE AND REEL

DRAWING NUMBER:
S1971-46R

SHT
2 OF 3

RA	7	04.02.25	35675
NAME	ISS.	DATE	CN/CO
APPROVED: R.ALEXANDER			
CHECKED: R.PORTLOCK			
DRAWN: R.PORTLOCK			

Customer Information Sheet

IF IN DOUBT - ASK

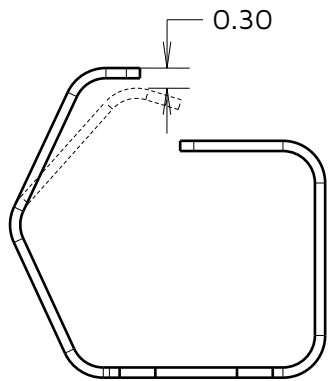


NOT TO SCALE

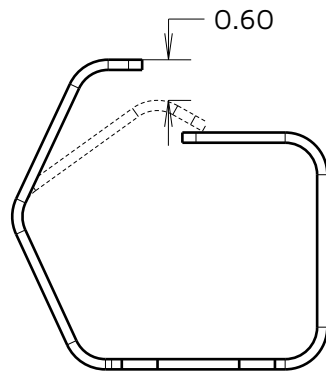
THIRD ANGLE PROJECTION

ALL DIMENSIONS IN mm

S1971-46R
DEFLECTION FROM ABOVE

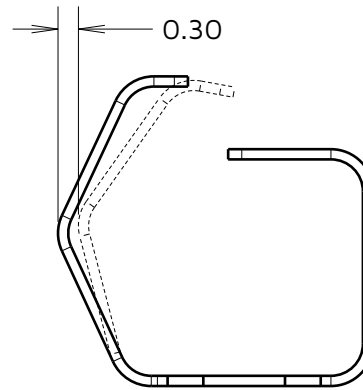


RECOMMENDED WORKING HEIGHT
DEFLECTION = 0.30mm,
MINIMUM FORCE OF 1.2N

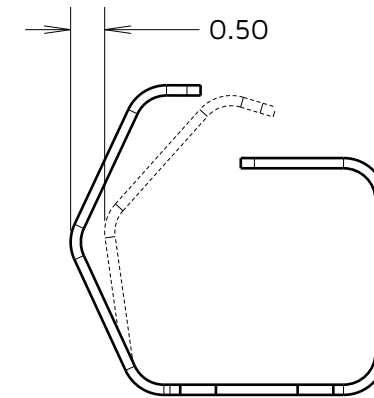


RECOMMENDED MINIMUM HEIGHT
DEFLECTION = 0.60mm

S1971-46R
DEFLECTION FROM FRONT



RECOMMENDED WORKING LENGTH
DEFLECTION = 0.30mm



RECOMMENDED MINIMUM LENGTH
DEFLECTION = 0.50mm

COMPONENT SPECIFICATION:
MATERIAL = CUPRO NICKEL
FINISH = 100% TIN OVER NICKEL

SEE C055XX (LATEST ISSUE) FOR
FULL COMPONENT SPECIFICATION

RA	7	04.02.25	35675
NAME	ISS.	DATE	CN/CO
APPROVED:		R.ALEXANDER	
CHECKED:		R.PORTLOCK	
DRAWN:		R.PORTLOCK	

HARWIN

www.harwin.com

TOLERANCES
X. = ±1mm
X.X = ±0.50mm
X.XX = ±0.20mm
X.XXX = ±0.01mm
ANGLES = ±5°
UNLESS STATED

THIS DRAWING AND ANY INFORMATION OR
DESCRIPTIVE MATTER SET OUT HEREON ARE
CONFIDENTIAL AND COPYRIGHT PROPERTY
OF THE HARWIN GROUP AND MUST NOT BE
DISCLOSED, LOANED, COPIED OR USED FOR
MANUFACTURING, TENDERING OR FOR ANY
OTHER PURPOSE WITHOUT THEIR WRITTEN
PERMISSION.

MATERIAL & FINISH:

SEE ABOVE

TITLE:

MULTI-DIRECTIONAL SPRING CONTACT
IN TAPE AND REEL

DRAWING NUMBER:

S1971-46R

SHT
3
OF
3