

Customer Information Sheet

IF IN DOUBT - ASK

©

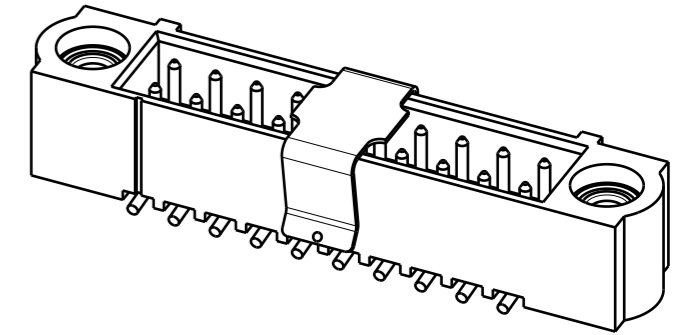
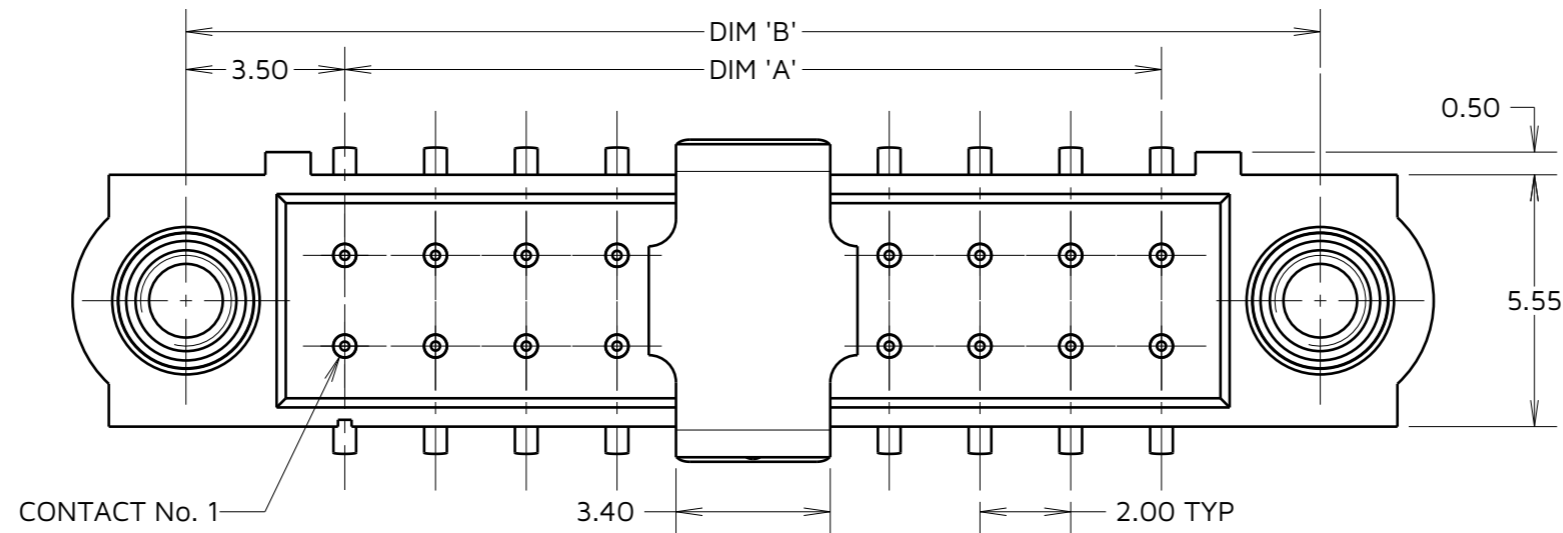
NOT TO SCALE

THIRD ANGLE PROJECTION

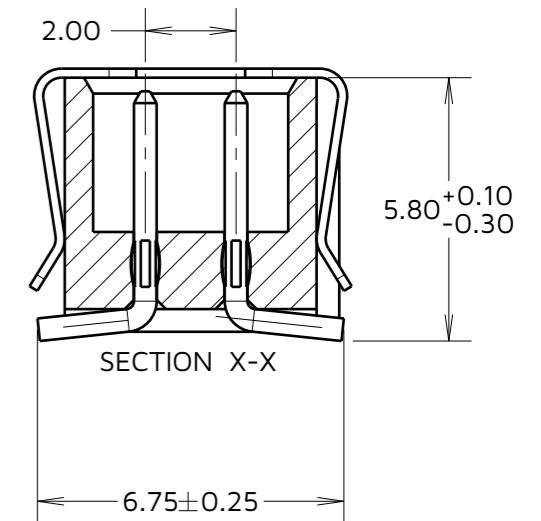
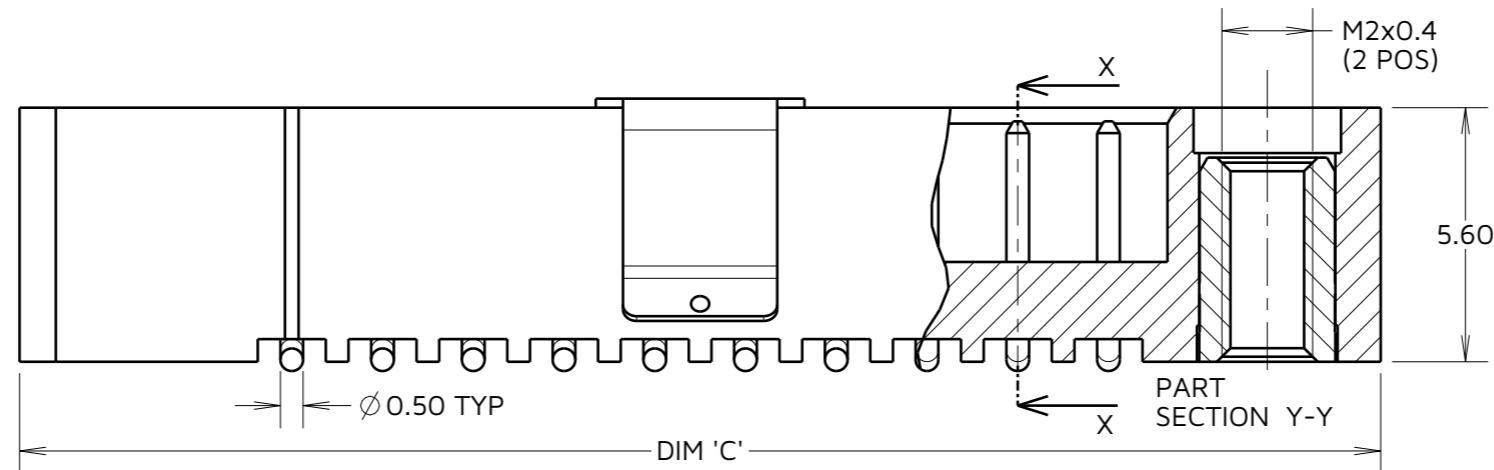
ALL DIMENSIONS IN mm

SPECIFICATIONS:

MATERIAL:
 HOUSING = GLASS-FILLED PPS,
 UL94V-0, BLACK
 CONTACT = PHOSPHOR BRONZE
 JACKSCREW = STAINLESS STEEL
 PICK & PLACE CAP = PHOSPHOR BRONZE
FINISH (ALL OVER NICKEL):
 05 - GOLD
 22 = GOLD ON CONTACT AREA,
 90/10 TIN/LEAD ON TAILS
 42 = GOLD ON CONTACT AREA,
 100% TIN ON TAILS
PACKING: TUBE
 FOR COMPLETE SPECIFICATION, SEE
 COMPONENT SPECIFICATION C005XX
 (LATEST ISSUE)

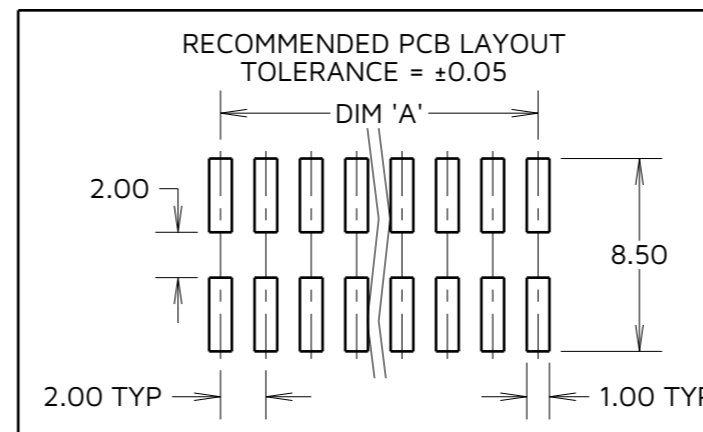


PART No.	WEIGHT (g)
M80-50204XXP	0.90
M80-50206XXP	0.96
M80-50208XXP	1.03
M80-50210XXP	1.10
M80-50212XXP	1.17
M80-50214XXP	1.24
M80-50216XXP	1.31
M80-50218XXP	1.38
M80-50220XXP	1.45
M80-50222XXP	1.52
M80-50224XXP	1.58
M80-50226XXP	1.65
M80-50228XXP	1.72
M80-50230XXP	1.79
M80-50232XXP	1.86
M80-50234XXP	1.93
M80-50236XXP	2.00
M80-50238XXP	2.07
M80-50240XXP	2.13
M80-50242XXP	2.20
M80-50244XXP	2.27
M80-50246XXP	2.34
M80-50248XXP	2.41
M80-50250XXP	2.48



DIMENSION	CALCULATION
DIM 'A'	TOTAL No. OF CONTACTS - 2.00
DIM 'B'	TOTAL No. OF CONTACTS + 5.00
DIM 'C'	TOTAL No. OF CONTACTS + 10.0

EXAMPLE: CONNECTOR WITH 20 CONTACTS
 M80-50220XXP
 DIM 'A' = 18.00mm, DIM 'B' = 25.00mm,
 DIM 'C' = 30.0mm



ORDER CODE:
M80-502XXXXP
 TOTAL No. OF CONTACTS
 04 - 50
 (EVEN NUMBERS ONLY)
 FINISH _____
 05 - GOLD
 22 - SELECTIVE GOLD + TIN/LEAD
 42 - SELECTIVE GOLD + 100% TIN

MJ	9	19.12.24	35293
NAME	ISS.	DATE	CN/CO
APPROVED: M. JELLEY			
CHECKED: R. ALEXANDER			
DRAWN: B. M. KENT			

NOTES:
 1. M80--50220XXP IS SHOWN FOR ILLUSTRATION PURPOSES, SEE ORDER CODE FOR VARIANTS.

HARWIN

www.harwin.com

TOLERANCES
 X. = ±1mm
 X.X = ±0.50mm
 X.XX = ±0.20mm
 X.XXX = ±0.01mm
 ANGLES = ±5°
 UNLESS STATED

THIS DRAWING AND ANY INFORMATION OR DESCRIPTIVE MATTER SET OUT HEREON ARE CONFIDENTIAL AND COPYRIGHT PROPERTY OF THE HARWIN GROUP AND MUST NOT BE DISCLOSED, LOANED, COPIED OR USED FOR MANUFACTURING, TENDERING OR FOR ANY OTHER PURPOSE WITHOUT THEIR WRITTEN PERMISSION.

MATERIAL & FINISH:
 SEE ABOVE

TITLE: **DATAMATE DIL MALE VERTICAL SMT P/PLACE CONNECTOR ASSEMBLY**

DRAWING NUMBER:
M80-502XXXXP

SHT
 2 OF 2