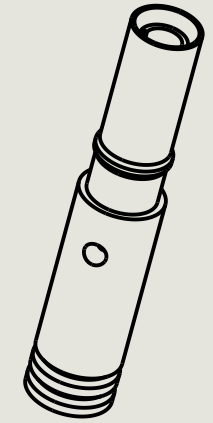


# Customer Information Sheet

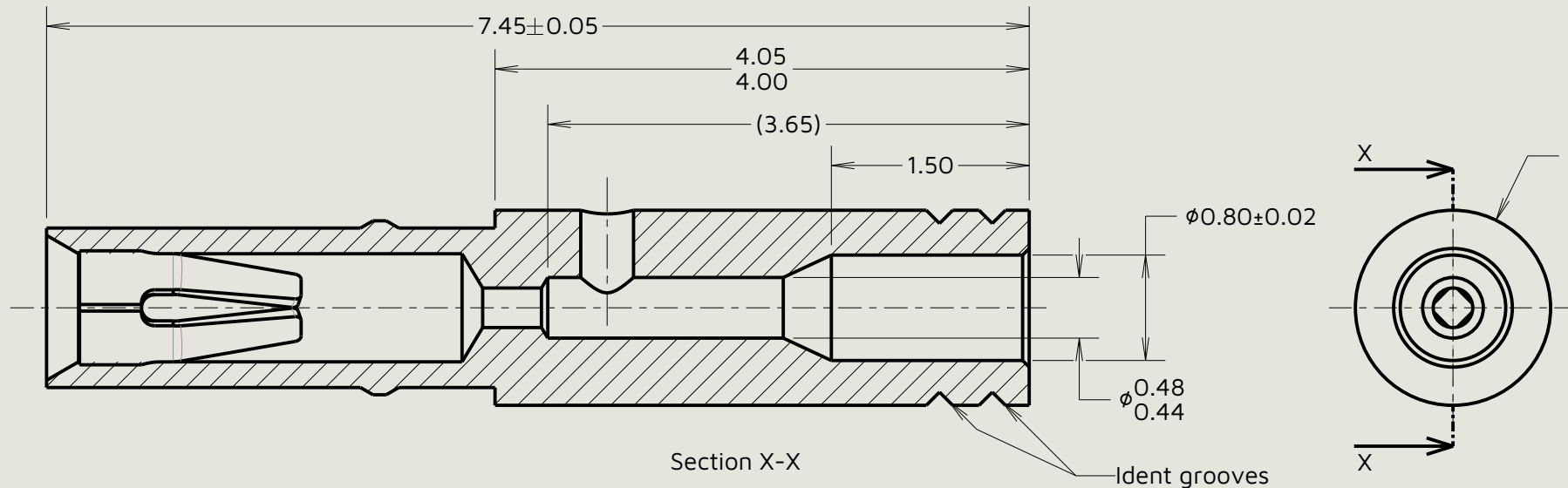
**Specification:**

**Material:**  
 Contact shell = Brass  
 Contact clip = Beryllium copper  
**Finish:**  
 See Order Code  
**Packing:**  
 Bulk

For complete specification, see component specification C005XX (latest issue)



Scale 8:1



**Notes:**

- Suitable for wire gauges 28, 30 & 32 AWG. Maximum insulation diameter  $\phi 0.75\text{mm}$ , BS 3G 210 Type A wire and MIL-DTL-16878/6 Type ET wire are recommended. Strip wire by 2.00mm for crimping.
- Recommended crimp tool = M22520/2-01 with positioner T5747.
- For crimping method, see instruction sheet IS-01.

Order Code:  
**M80-01900XX**  
 Finish: \_\_\_\_\_  
 01 - Gold clip, 100% Tin over Nickel shell  
 05 - Gold clip, Gold shell

ES	3	20.03.26	38257
Initials	Rev.	Date	CO
SM	1	15.06.11	---



This drawing and any information or descriptive matter set out hereon are confidential and copyright property of the Harwin group and must not be disclosed, loaned, copied or used for manufacturing, tendering or for any other purpose without their written permission.

**TOLERANCES**  
 X. =  $\pm 0.50\text{mm}$   
 X.X =  $\pm 0.30\text{mm}$   
 X.XX =  $\pm 0.10\text{mm}$   
 X.XXX =  $\pm 0.01\text{mm}$   
 Angles =  $\pm 5^\circ$   
 Unless stated

Third angle projection  
  
 Sheet scale: 20:1  
 Do not scale  
 Sheet size: A4

**MATERIAL:**  
 See above  
**FINISH:**  
 See above

**Title:**  
 Datamate Female Crimp Contact (28-32AWG)  
**Drawing number:**  
**M80-01900XX**  
 SHT 2 OF 2