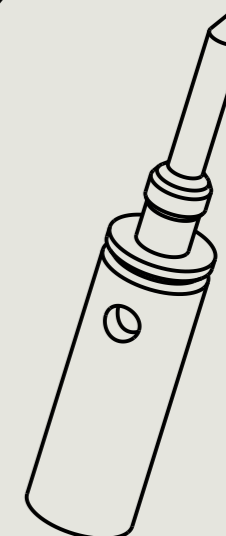
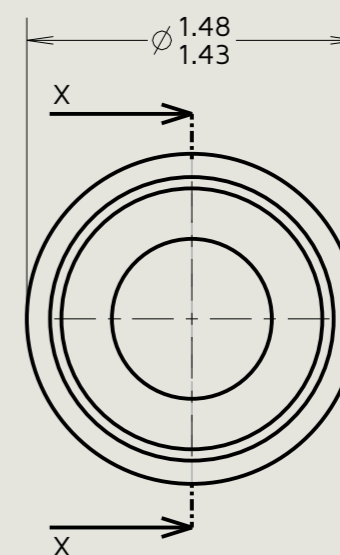
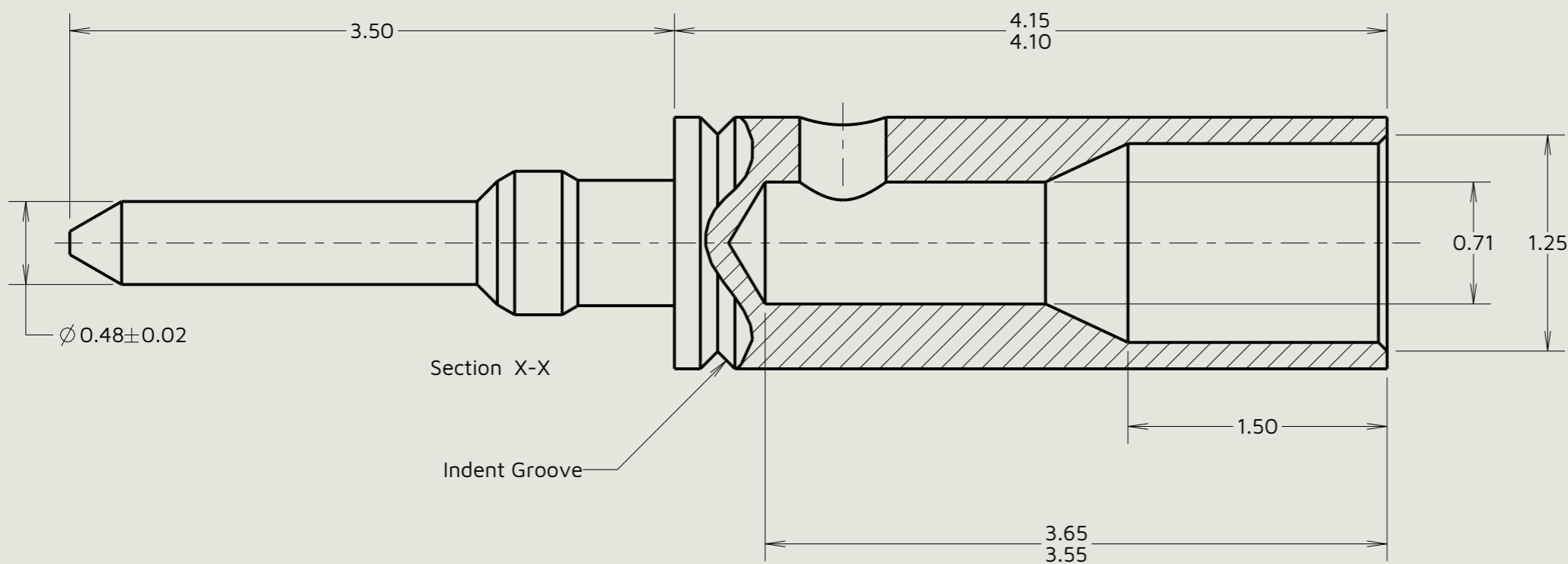


Customer Information Sheet

Specifications

Material:
 Contact shell = Brass
 Finish:
 05- Gold over nickel
 Packing:
 Bulk
 For complete specification, see component specification C005XX (latest issue)


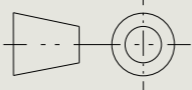


Scale 10:1

ES	10	20.03.26	38257
Initials	Rev.	Date	CO
RA	1	03.08.10	10893

Notes

- Suitable for wire gauge 24-28 AWG. Maximum insulation diameter $\varnothing 1.10\text{mm}$. BS 3G 210 Type A and wire types listed on Component Specification C049XX (latest issue) are recommended. Strip wire by 2.00mm for crimping.
- Recommended crimp tooling = M22520/2-01 with positioner Z80-193.
- For crimping method, see Instruction Sheet IS-01.

 www.harwin.com	This drawing and any information or descriptive matter set out hereon are confidential and copyright property of the Harwin group and must not be disclosed, loaned, copied or used for manufacturing, tendering or for any other purpose without their written permission.	TOLERANCES X. = $\pm 0.50\text{mm}$ X.X = $\pm 0.30\text{mm}$ X.XX = $\pm 0.10\text{mm}$ X.XXX = $\pm 0.01\text{mm}$ Angles = $\pm 5^\circ$ Unless stated	Third angle projection 	MATERIAL: See specification	Title: Datamate Jackscrew Male Crimp Contact (24-28AWG)
		Sheet scale: 30:1 Do not scale Sheet size: A3	FINISH: See specification	Drawing number: M80-1950005	SHT 2 OF 2