

Customer Information Sheet

Specification:
Material:

Contact Shell = Brass

Contact Clip = Beryllium Copper

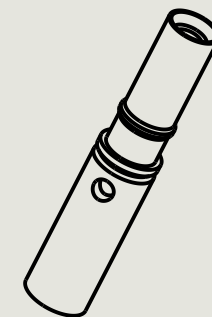
Finish:

See order code

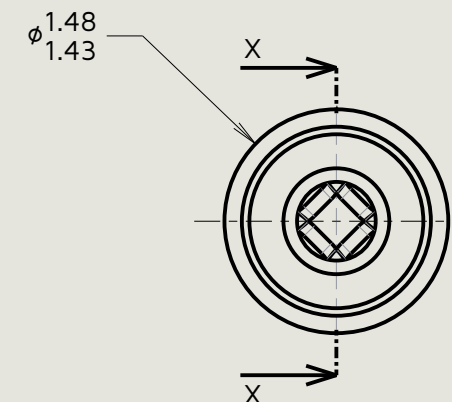
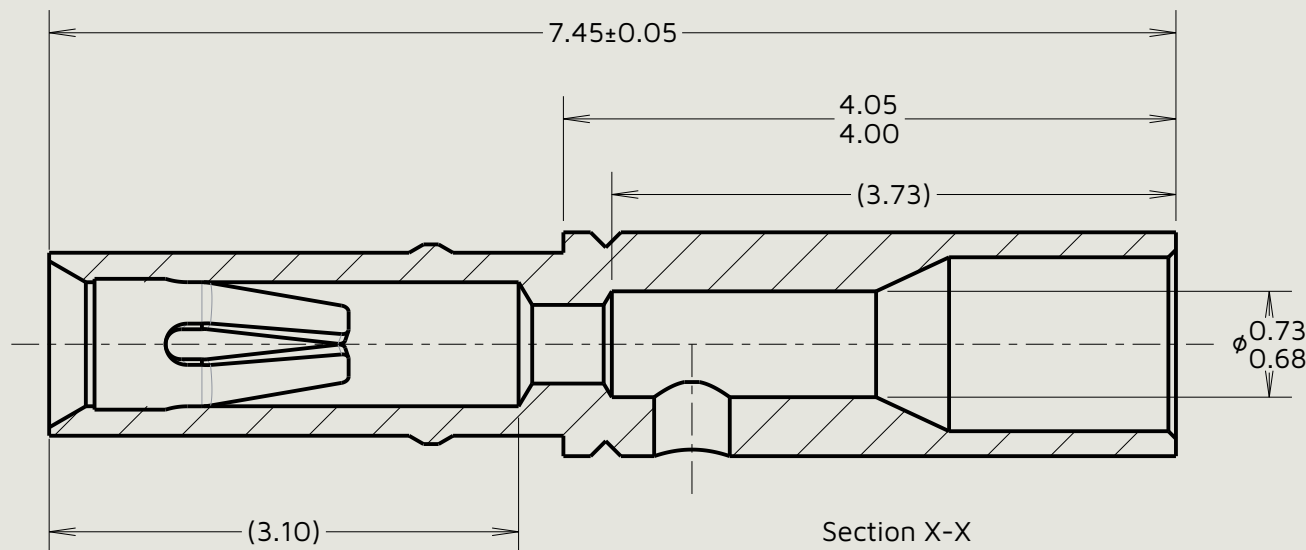
Packing:

Bulk

For complete connector specification, see Component Specification C005XX (latest issue)



Scale 6:1


Notes:

- Suitable for wire gauge 24, 26 & 28 AWG. Maximum insulation diameter $\phi 1.10\text{mm}$, BS3G210 Type A wire recommended. Strip wire by 2.00mm for Crimping.
- Recommended crimp tool = M22520/2-01, positioner = T5747,
- For instructions on hand crimp tool M22520/2-01, see instruction sheet IS-01.
- Recommended mating pin size = $\phi 0.46\text{-}0.51\text{mm}$.

Order Code:

M80-01300XX

Finish:

 01 - Gold clip, 100% Tin over Nickel shell
 05 - Gold clip, Gold shell

AY	21	20.03.26	38257
Initials	Rev.	Date	CO
IS	12	03.08.92	2055

HARWIN
www.harwin.com

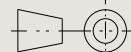
This drawing and any information or descriptive matter set out hereon are confidential and copyright property of the harwin group and must not be disclosed, loaned, copied or used for manufacturing, tendering or for any other purpose without their written permission.

TOLERANCES

X. = $\pm 0.50\text{mm}$
 X.X = $\pm 0.30\text{mm}$
 X.XX = $\pm 0.10\text{mm}$
 X.XXX = $\pm 0.01\text{mm}$
 Angles = $\pm 5^\circ$

Unless stated

Third angle projection



Sheet scale: 20:1
 Do not scale
 Sheet size: A4

MATERIAL:

See above

FINISH:

See above

Title:

Datamate Female Crimp Socket Contact Assembly (24-28AWG)

Drawing number:

M80-01300XX

 SHT
 2
 OF 2