

# Customer Information Sheet

## STRAIGHT WIRE CONFIGURATIONS

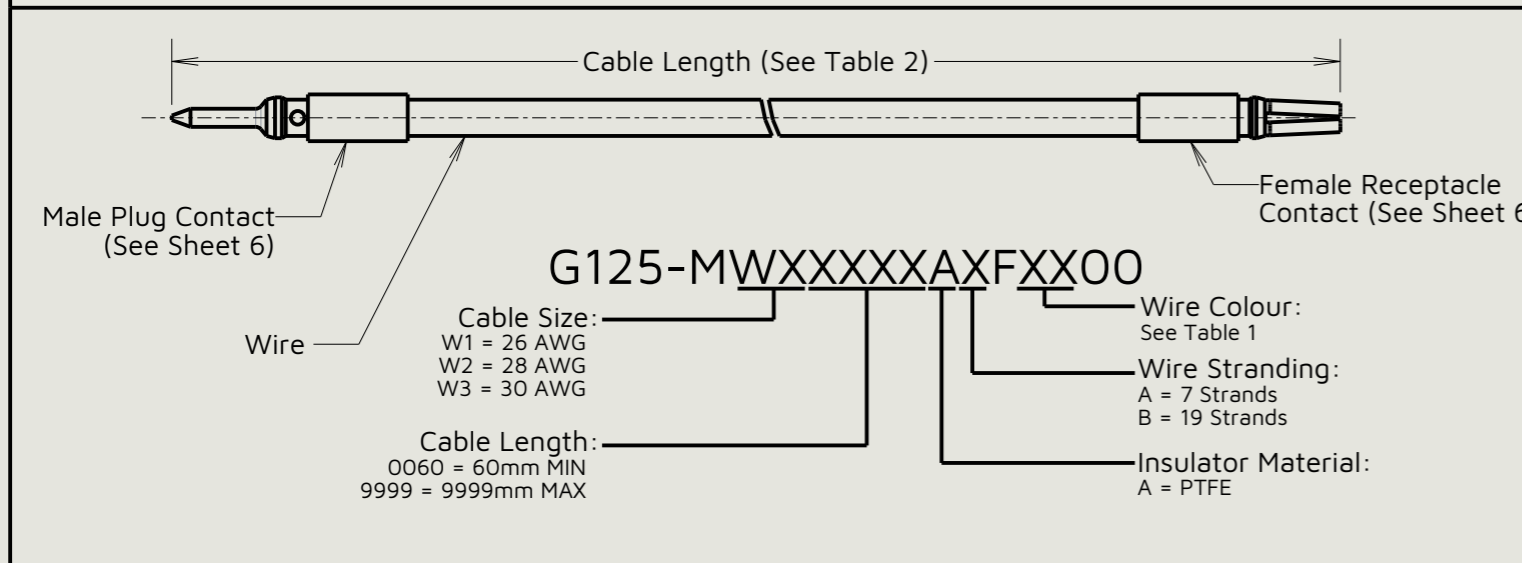
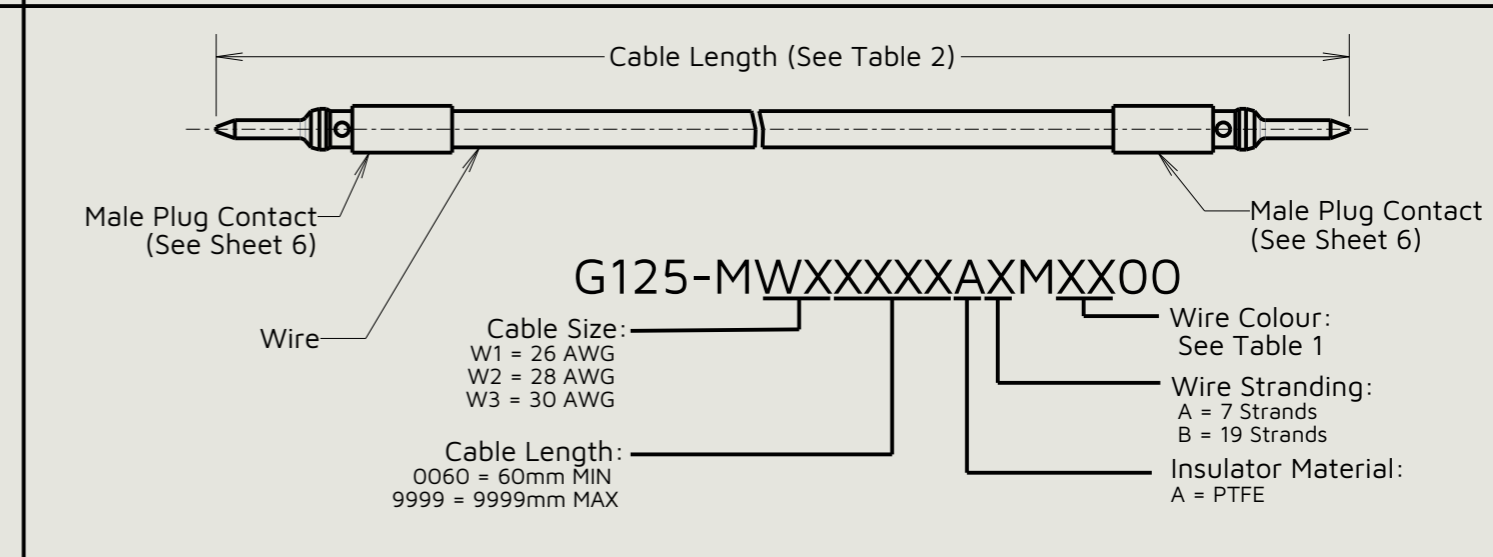
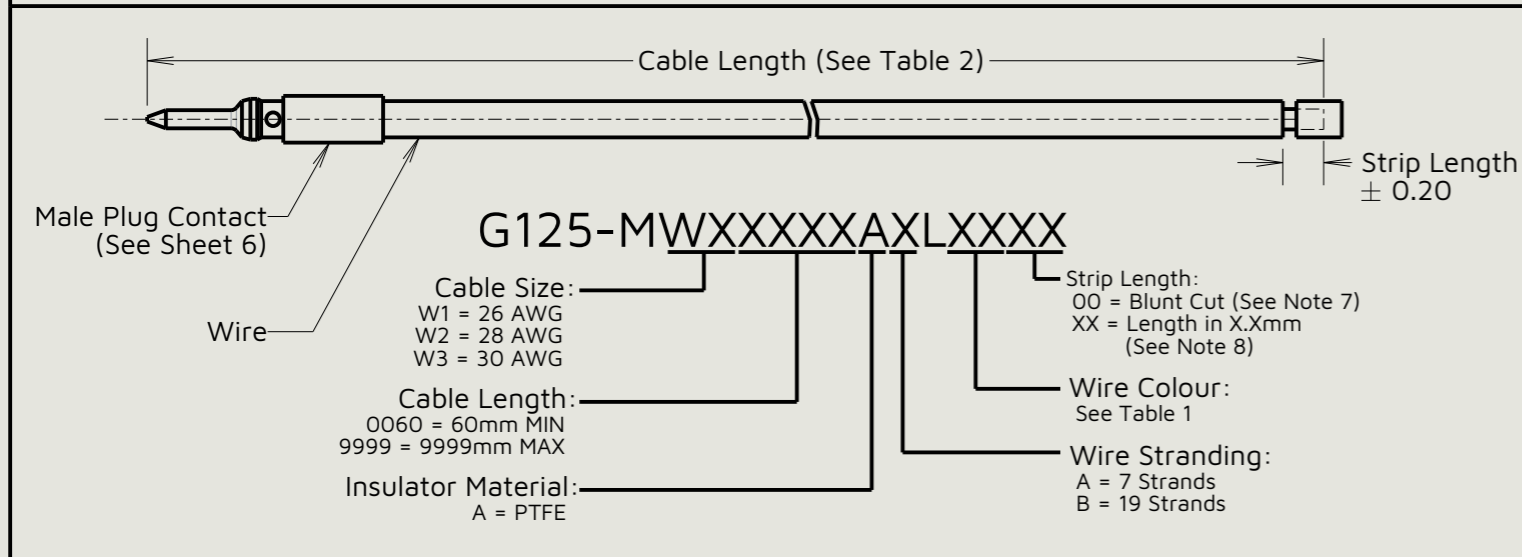
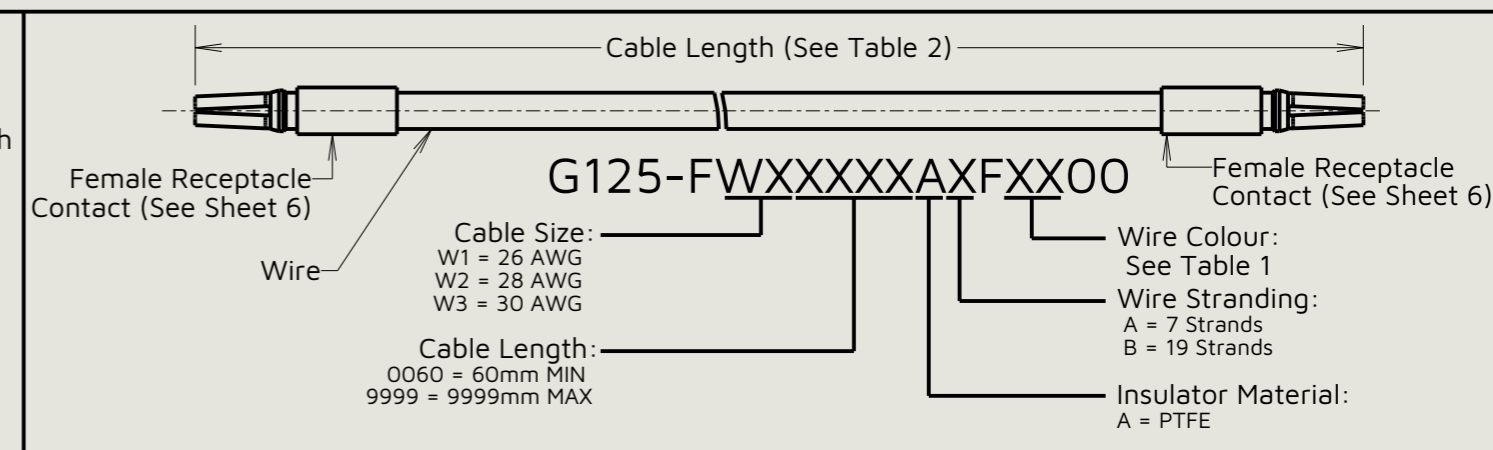
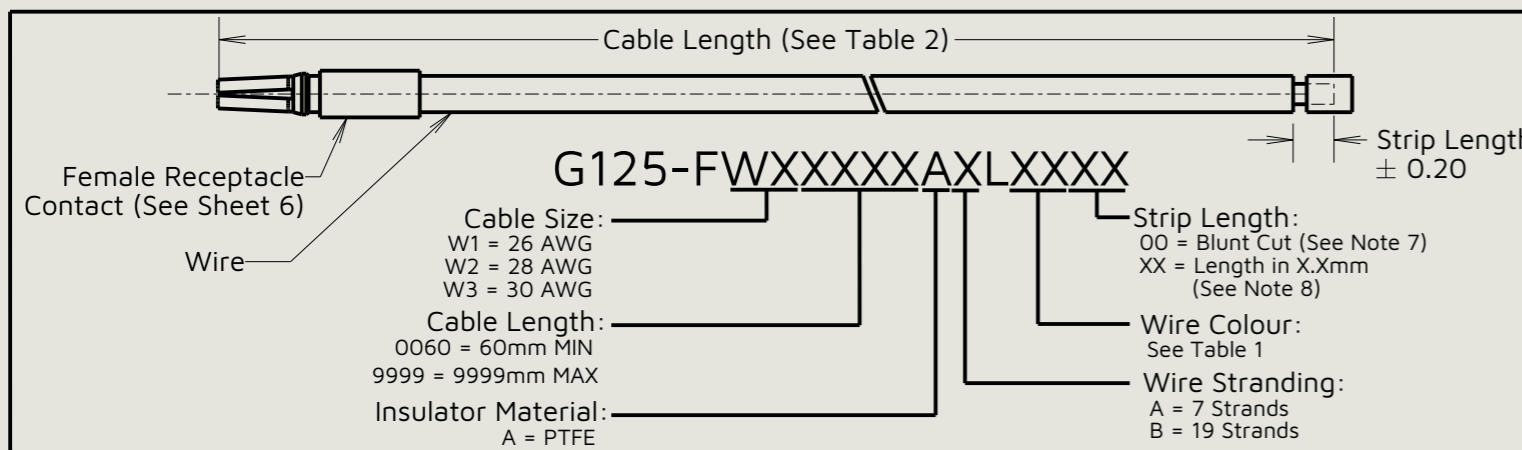


Table 1: Wire Colour Identification

Wire Colour Code	Wire Colour	Wire Colour Code	Wire Colour
87	Beige	94	White
88	Violet/Purple	95	Yellow
89	Light Grey	96	Green
90	Pink	97	Blue
91	Grey	98	Black
92	Orange	99	Red
93	Brown	-	-

Table 2: Tolerance for Cable Lengths

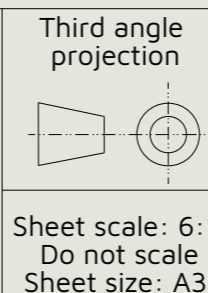
Cable Length	Tolerance
Up to 300mm	$\pm 5$ mm
300mm to 600mm	$\pm 10$ mm
Over 600mm	$\pm 20$ mm

- Notes:
1. Cables are individually packed in bags.
  2. Contact insertion/withdrawal tool = Z125-902.
  3. For instructions on insertion and removal of contacts into housings, see Instruction Sheet IS-38.
  4. See Component Specification C049XX (latest issue) for wire types & material specification.
  5. See sheet 5 for twisted pair configurations.
  6. See sheet 6 for contact identification.
  7. Blunt cuts can have +/- 0.20mm exposed conductor due to shrink back.
  8. Strip Length is 1.0mm to 9.5mm, in 0.5mm increments. For example, a 2.5mm strip length is shown as 25.



This drawing and any information or descriptive matter set out hereon are confidential and copyright property of the Harwin group and must not be disclosed, loaned, copied or used for manufacturing, tendering or for any other purpose without their written permission.

**TOLERANCES**  
 X. =  $\pm 0.50$ mm  
 X.X =  $\pm 0.30$ mm  
 X.XX =  $\pm 0.10$ mm  
 X.XXX =  $\pm 0.01$ mm  
 Angles =  $\pm 5^\circ$   
 Unless stated



**MATERIAL:**  
 See Note 4 & Note 6

**FINISH:**  
 See Note 4 & Note 6

**Title:**  
 Gecko Pre-Cabled Contact Assemblies

**Drawing number:**  
**G125-FW, -MW, -FT, -MT**

JW 8 27.01.26 37704  
 Initials Rev. Date CO  
 SB 1 22.08.12 -----

SHT 4 OF 6

# Customer Information Sheet

## TWISTED PAIR CONFIGURATIONS

**G125-FTXXXXXAXLXXXX**

Cable Length (See Table 2)

Female Receptacle Contact (See Sheet 6)

Strip Length  $\pm 0.20$

Twisted Pair Wire

Cable Size:  
T1=26 AWG  
T2=28 AWG  
T3=30 AWG

Cable Length:  
0060 = 60mm MIN  
9999 = 9999mm MAX

Insulator Material:  
A = PTFE

Strip Length:  
00 = Blunt Cut (See Note 7)  
XX = Length in X.Xmm (See Note 8)

Wire Colour:  
See Table 3

Wire Stranding:  
A = 7 Strands  
B = 19 Strands

**G125-FTXXXXXAXFXX00**

Cable Length (See Table 2)

Female Receptacle Contact (See Sheet 6)

Twisted Pair Wire

Cable Size:  
T1=26 AWG  
T2=28 AWG  
T3=30 AWG

Cable Length:  
0060 = 60mm MIN  
9999 = 9999mm MAX

Wire Colour:  
See Table 3

Wire Stranding:  
A = 7 Strands  
B = 19 Strands

Insulator Material:  
A = PTFE

**G125-MTXXXXXAXLXXXX**

Cable Length (See Table 2)

Male Plug Contacts (See Sheet 6)

Strip Length  $\pm 0.20$

Twisted Pair Wire

Cable Size:  
T1=26 AWG  
T2=28 AWG  
T3=30 AWG

Cable Length:  
0060 = 60mm MIN  
9999 = 9999mm MAX

Insulator Material:  
A = PTFE

Strip Length:  
00 = Blunt Cut (See Note 7)  
XX = Length in X.Xmm (See Note 8)

Wire Colour:  
See Table 3

Wire Stranding:  
A = 7 Strands  
B = 19 Strands

**G125-MTXXXXXAXMXX00**

Cable Length (See Table 2)

Male Plug Contacts (See Sheet 6)

Twisted Pair Wire

Cable Size:  
T1=26 AWG  
T2=28 AWG  
T3=30 AWG

Cable Length:  
0060 = 60mm MIN  
9999 = 9999mm MAX

Wire Colour:  
See Table 3

Wire Stranding:  
A = 7 Strands  
B = 19 Strands

Insulator Material:  
A = PTFE

**G125-MTXXXXXAXFXX00**

Cable Length (See Table 2)

Male Plug Contacts (See Sheet 6)

Female Receptacle Contact (See Sheet 6)

Twisted Pair Wire

Cable Size:  
T1=26 AWG  
T2=28 AWG  
T3=30 AWG

Cable Length:  
0060 = 60mm MIN  
9999 = 9999mm MAX

Wire Colour:  
See Table 3

Wire Stranding:  
A = 7 Strands  
B = 19 Strands

Insulator Material:  
A = PTFE

Table 3: Twisted Pair Wire Colours

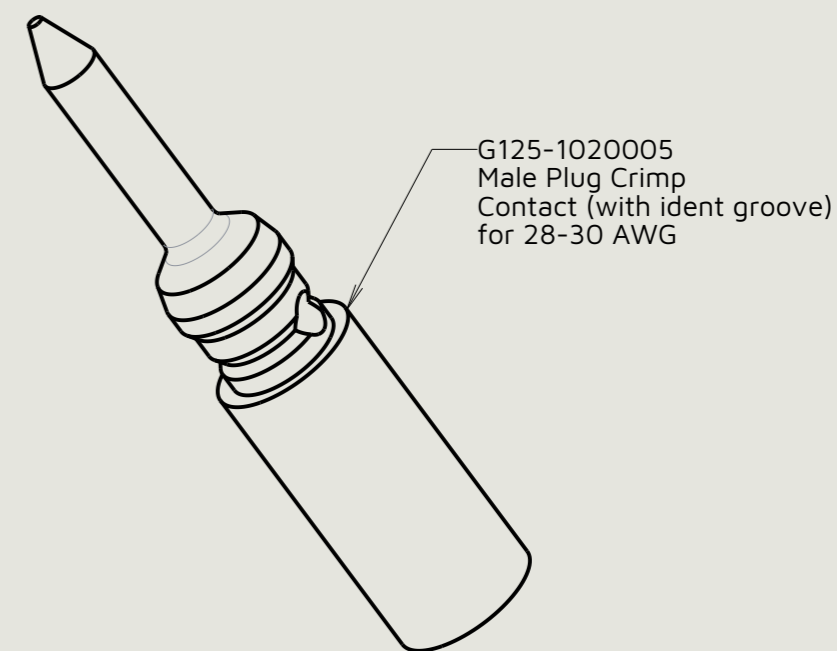
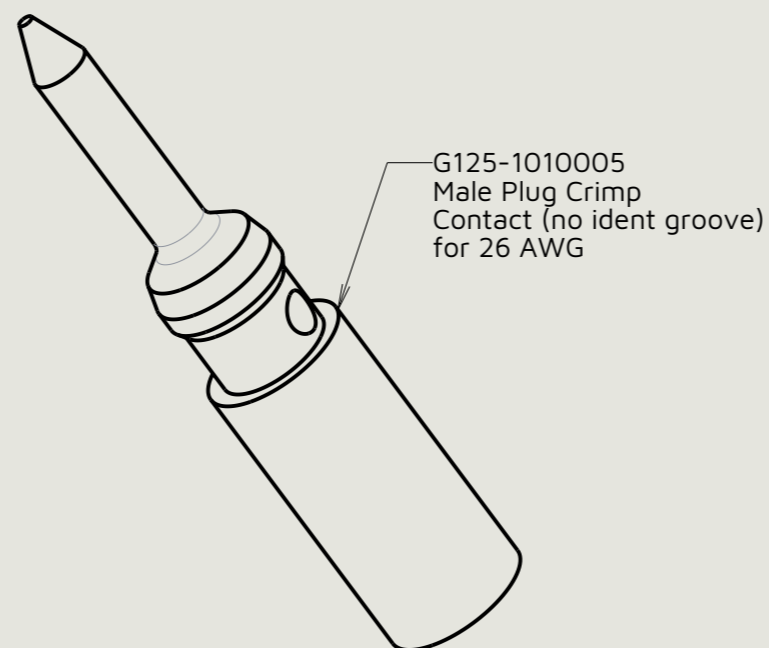
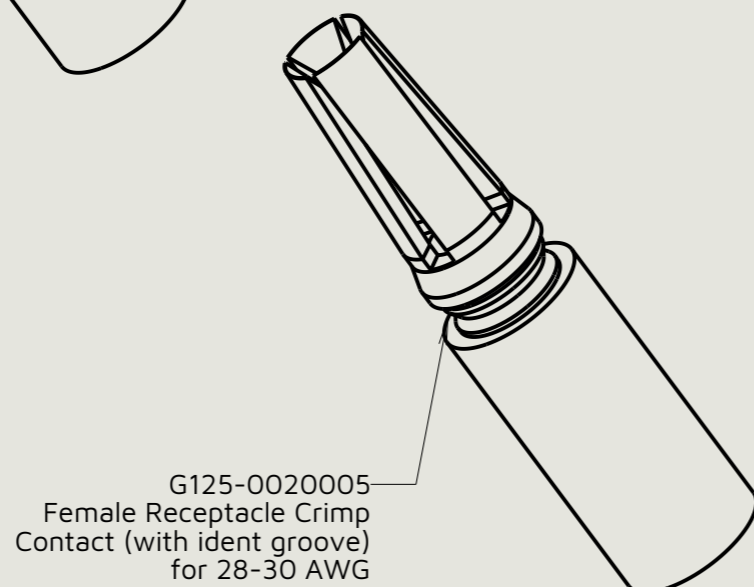
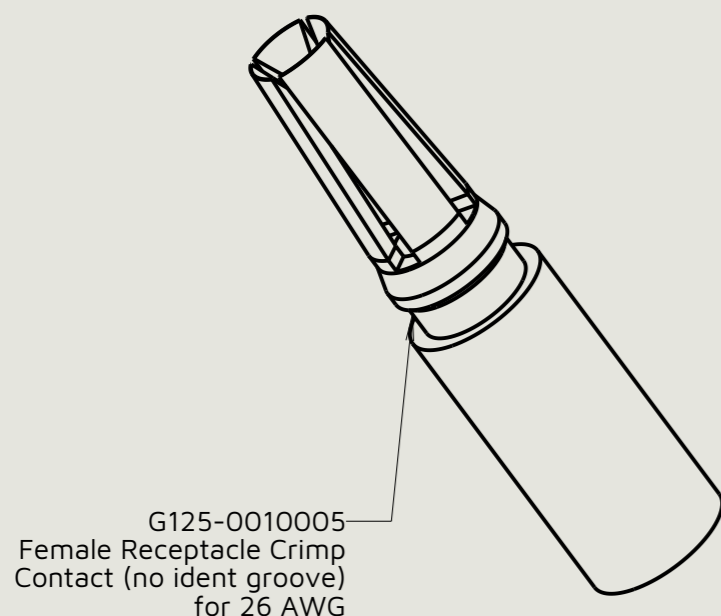
Wire Colour Code	Turn Per Inch (TPI)	Wire Colour
02	2	White
		Green
03	3	White
		Red

JW	8	27.01.26	37704
Initials	Rev.	Date	CO
SB	1	22.08.12	----


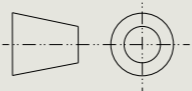
<p>www.harwin.com</p>	<p>This drawing and any information or descriptive matter set out hereon are confidential and copyright property of the Harwin group and must not be disclosed, loaned, copied or used for manufacturing, tendering or for any other purpose without their written permission.</p>	<p>TOLERANCES</p> <p>X. = <math>\pm 0.50</math>mm                  X.X = <math>\pm 0.30</math>mm                  X.XX = <math>\pm 0.10</math>mm                  X.XXX = <math>\pm 0.01</math>mm                  Angles = <math>\pm 5^\circ</math></p> <p>Unless stated</p>	<p>Third angle projection</p>	<p>MATERIAL:</p> <p>See Sheet 4</p>	<p>Title:</p> <p>Gecko Pre-Cabled Contact Assemblies</p>
		<p>Sheet scale: 4:1                  Do not scale                  Sheet size: A3</p>	<p>FINISH:</p> <p>See Sheet 4</p>	<p>Drawing number:</p> <p><b>G125-FW, -MW, -FT, -MT</b></p>	<p>SHT 5 OF 6</p>

# Customer Information Sheet

## CONTACT IDENTIFICATION



JW	8	27.01.26	37704
Initials	Rev.	Date	CO
SB	1	22.08.12	-----

 www.harwin.com	This drawing and any information or descriptive matter set out hereon are confidential and copyright property of the Harwin group and must not be disclosed, loaned, copied or used for manufacturing, tendering or for any other purpose without their written permission.	<b>TOLERANCES</b> X. = ±0.50mm X.X = ±0.30mm X.XX = ±0.10mm X.XXX = ±0.01mm Angles = ±5° Unless stated	Third angle projection 	MATERIAL: See Sheet 4	Title: Gecko Pre-Cabled Contact Assemblies	
			Sheet scale: 20:1 Do not scale Sheet size: A3	FINISH: See Sheet 4	Drawing number: <b>G125-FW, -MW, -FT, -MT</b>	SHT 6 OF 6