

HARWIN

CONNECT TECHNOLOGY
WITH CONFIDENCE



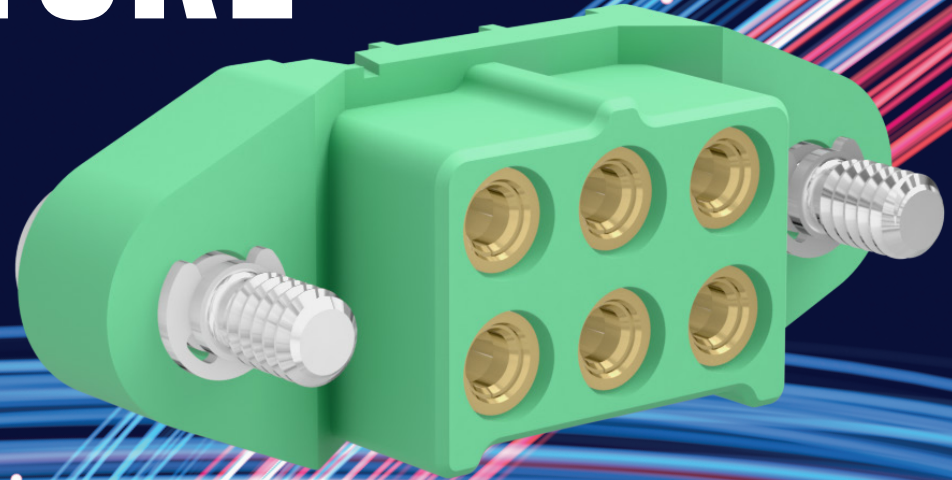
HRI

RANGE

M300

HIGH RELIABILITY HIGH TEMPERATURE

ROBUST COMPACT POWER CONNECTORS



HARWIN

M300

HRI CONNECTORS FROM HARWIN.

ROBUST & COMPACT POWER CONNECTIONS FOR SWAP-C OPTIMIZATION

Connectors designed for challenging environments, with a wide temperature range, vibration and shock resistance and strain-resistant mating. Durability with robust housings; tough and lightweight.

Power handling in a small but versatile design. Easy to assemble and mate with polarization and shrouding, position 1 marking, and a robust housing design.

Cable-to-board and board-to-board; pin counts of 3, 6 and 10 at up to 10A per contact. Maximum voltage rating of 1,800V delivered by 4-finger Beryllium copper alloy contacts. Accommodates working temperatures from -65°C to +175°C, maintaining electrical connectivity in a variety of harsh environments.

Gold plating resists wear from continued use: mating durability exceeds 1,000 operations. Delivering long-life durability in mate-and-forget operations.

Use the stainless steel jackscrews for connector-to-connector strain relief; add backpotting resin inside the cable connector rear cavity to protect against cable strain. Cable assembly options are available from our in-house cabling experts, ready for your prototyping or production line needs.

FEATURES

- Comprehensive operating temperature range for a wide variety of challenging environments
- Power connection under extreme environments – vibration, shock and temperature resistance
- Low outgassing, great for space, avionics and optronics

APPLICATIONS

- Aviation and UAVs
- New Space
- Motorsport, EVs
- Defense & Security
- High-end Industrial



M300

SPECIFICATIONS

| MATERIALS | ELECTRICAL | MECHANICAL | ENVIRONMENTAL |
|--|--|--|---|
| Housings: Glass-Filled High Temperature Thermoplastic, UL94V-0 | Current per contact: 10A max | Durability: 1,000 mating cycles | Operating temperature: -65°C to +175°C |
| | Working voltage: 600V AC/DC | Insertion force (per contact): 9N max | Humidity: 90% RH at +40°C for 56 days |
| Contacts: Copper Alloy, Gold Plating | Maximum voltage: 1,800V AC | Withdrawal force (per contact): 1N min | Vibration resistance: 10G (98.1m/s²) for 9 hrs |
| | Contact resistance: 6mΩ max | Contact retention in housing: 15N min | Shock resistance: 100G (981m/s²) |
| Jackscrews: Stainless Steel | Insulation resistance: 100MΩ min | Pitch: 3.00mm | Outgassing: 0.68% TML, 0.01% CVCM, 0.26% WVR |
| | | | Compliance: RoHS Compliant REACH / CMRT statements |

Specifications are subject to change.

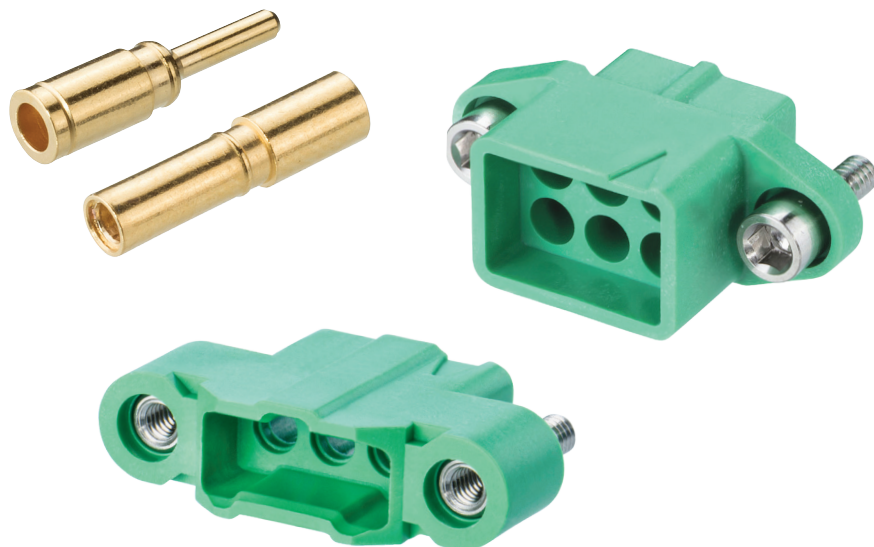


M300

PRODUCT CATEGORIES

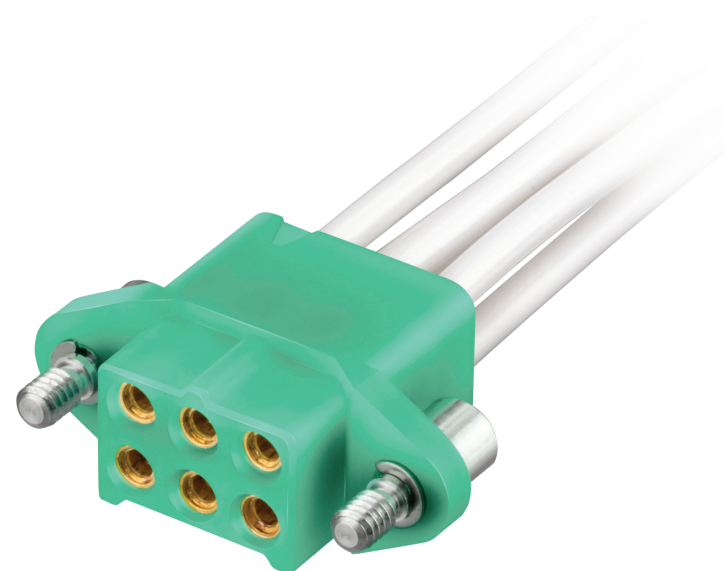
CABLE CONNECTOR PARTS

Male plug and female receptacle cable housings and contacts available separately. Jackscrews are supplied assembled to the housings. Floating fixings on female receptacle connectors; male plug housings available with front panel mount.



CABLE ASSEMBLIES

Ready-to-use cabled connectors, single or double ended, fully inspected and tested. Ideal for both prototyping and full production requirements.



Specifications are subject to change.



VIEW FULL SERIES & SPECIFICATIONS [HERE](#)

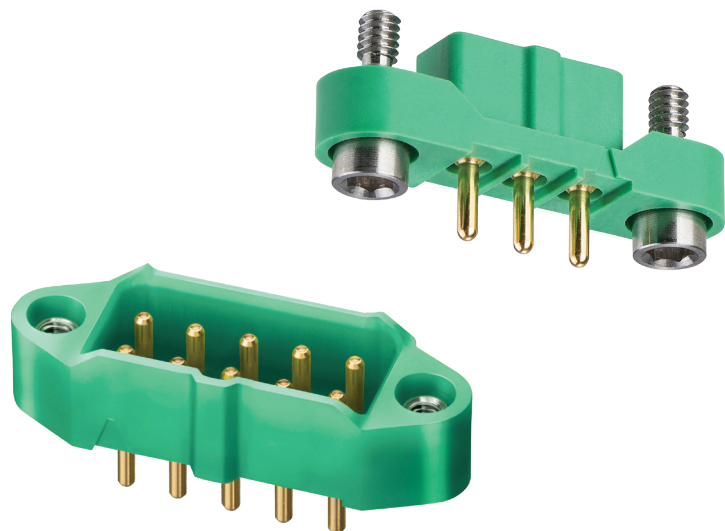


M300

PRODUCT CATEGORIES

PCB CONNECTORS

Female receptacle and male plug board-mounted connectors with intermating jackscrews. Straight orientation. No. 1 contact indication.



TOOLING & ACCESSORIES

Associated products and tooling to support the M300 range.



Specifications are subject to change.



VIEW FULL SERIES & SPECIFICATIONS [HERE](#)



M300

DOWNLOADS

TECHNICAL DOCUMENTS

Component Specification (including pin numbering system)



PRODUCT TRAINING

Product Training Module (PTM)



TEST REPORTS

HT043 – M300 General Testing



Specifications are subject to change.



VIEW FULL SERIES & SPECIFICATIONS [HERE](#)



HARWIN

CONNECT TECHNOLOGY
WITH CONFIDENCE



HRI
RANGE



BBI
RANGE



Ezi
RANGE

FOR FURTHER INFORMATION PLEASE CONTACT:

SUPPORT@HARWIN.COM

WWW.HARWIN.COM