

Customer Information Sheet

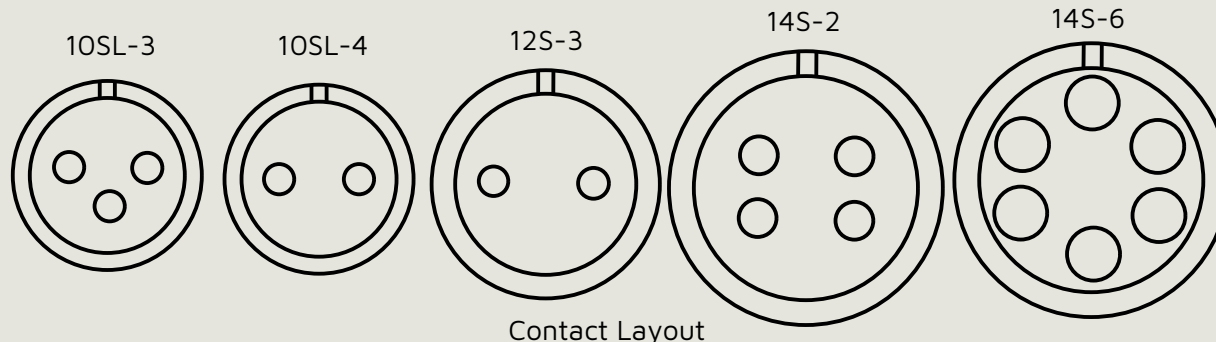
Specifications:

Material:
 Shell = Aluminium Alloy
 Insulator = Synthetic Rubber
 Grommet = Synthetic Rubber
 Contact = Copper Alloy

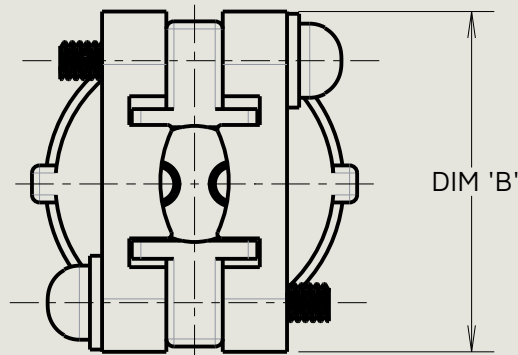
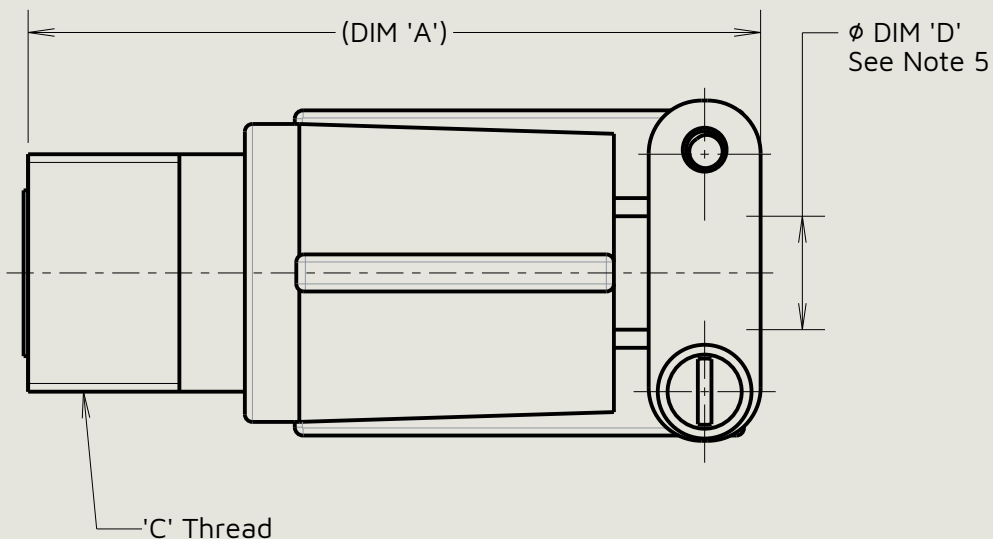
Finish:

Shell = Zinc Cobalt Alloy, Black
 Contact = Silver

For mechanical/electrical requirements,
 See component specification C045XX (latest issue).



Contact Layout



Order Code: **C90-3101FXXXX-XX**

Shell size (contact layout): _____
 10SL-3, 10SL-4, 12S-3,
 14S-2, 14S-6

Contact Gender: _____
 P - Male
 S - Female

Notes:

1. Product is RoHS compliant.
2. Product is packed in bags.
3. Recommended wire size = 16-22 AWG.
4. Recommended wire strip length = 7.5mm.
5. Cable clearance.

Table 1: Dimension Variants

Shell Size	(DIM 'A')	DIM 'B'	'C' Thread	ØDIM 'D'				
10SL	51.85	22.23±0.39	5/8-24UNEF	7.90±0.12	JW	11	05.12.25	37173
12S	51.20	22.23±0.39	3/4-20UNEF	7.90±0.12	Initials	Rev.	Date	CO
14S	52.85	26.10±1.08	7/8-20UNEF	11.18±0.13	CP	3	24.06.10	10843



This drawing and any information or descriptive matter set out hereon are confidential and copyright property of the Harwin group and must not be disclosed, loaned, copied or used for manufacturing, tendering or for any other purpose without their written permission.

TOLERANCES
 X. = ±0.50mm
 X.X = ±0.30mm
 X.XX = ±0.10mm
 X.XXX = ±0.01mm
 Angles = ±5°
 Unless stated

Third angle projection

 Sheet scale: 2:1
 Do not scale
 Sheet size: A4

MATERIAL:
 See above
FINISH:
 See above

Title:
 Cable Connector
Drawing number:
C90-3101FXXSX-XX
 SHT 2 OF 2