

# Customer Information Sheet

IF IN DOUBT - ASK

©

NOT TO SCALE

THIRD ANGLE PROJECTION

ALL DIMENSIONS IN mm

**SPECIFICATIONS:**

**MATERIAL:**

HOUSING = G-F PPS UL94V-0, BLACK  
CONTACTS = PHOSPHOR BRONZE

**FINISH:**

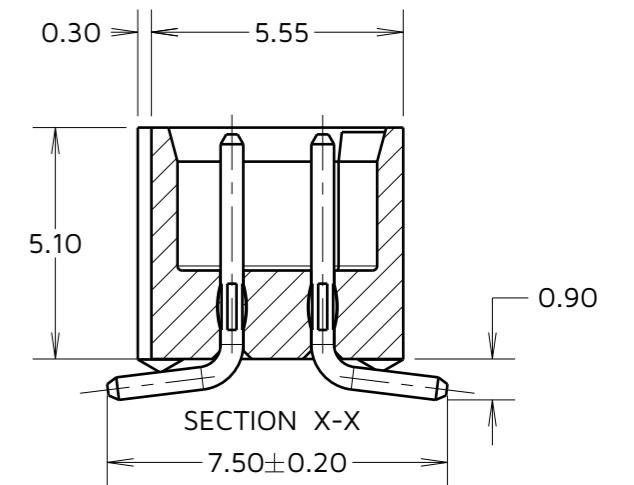
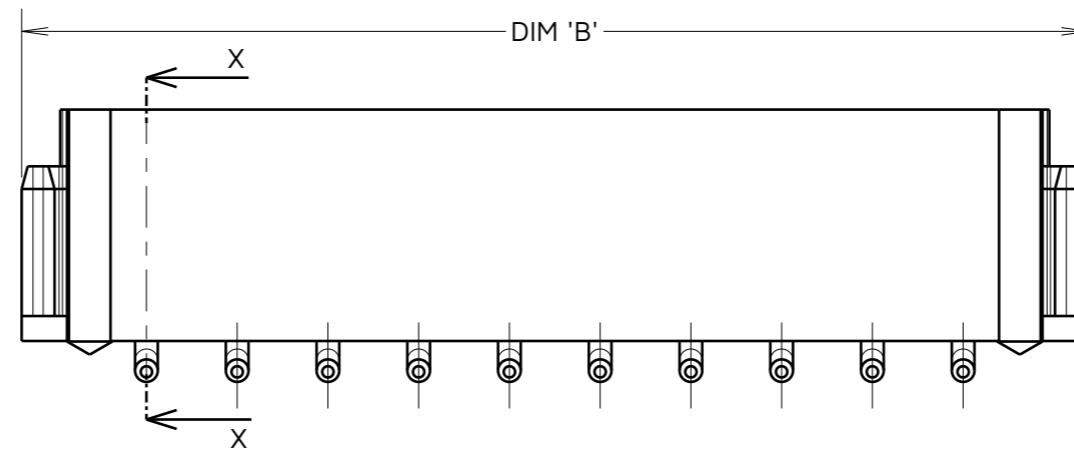
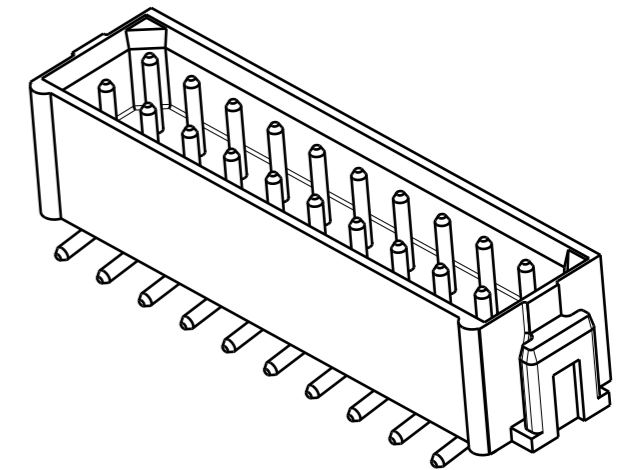
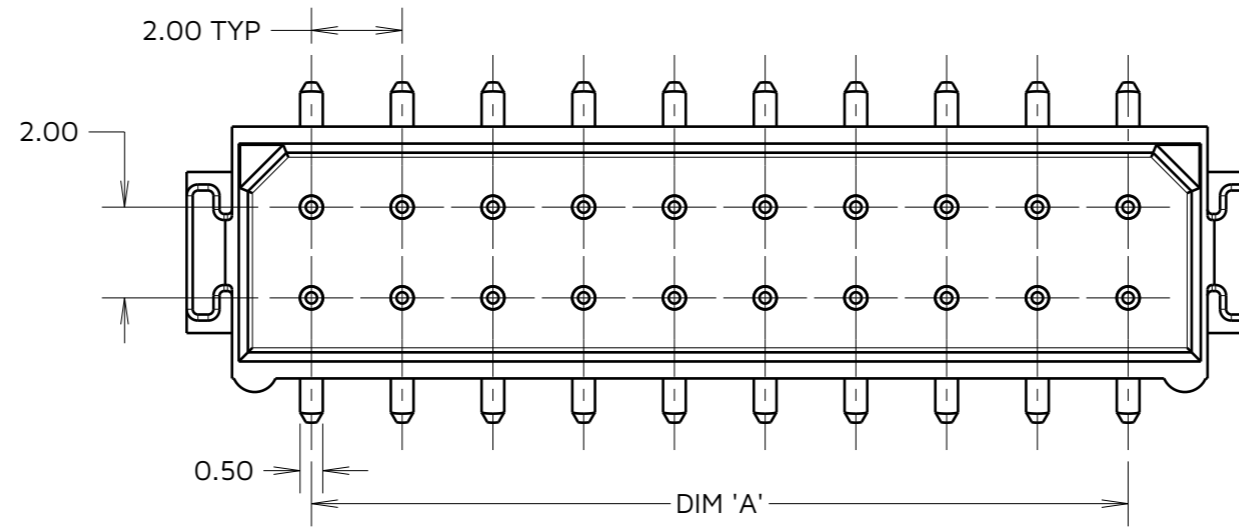
**CONTACTS:**

22 = GOLD ON CONTACT AREA,  
90/10 TIN/LEAD ON TAILS  
42 = GOLD ON CONTACT AREA,  
100% TIN OVER NICKEL ON TAILS  
45 = GOLD ALL OVER

**PACKING:**

TUBE

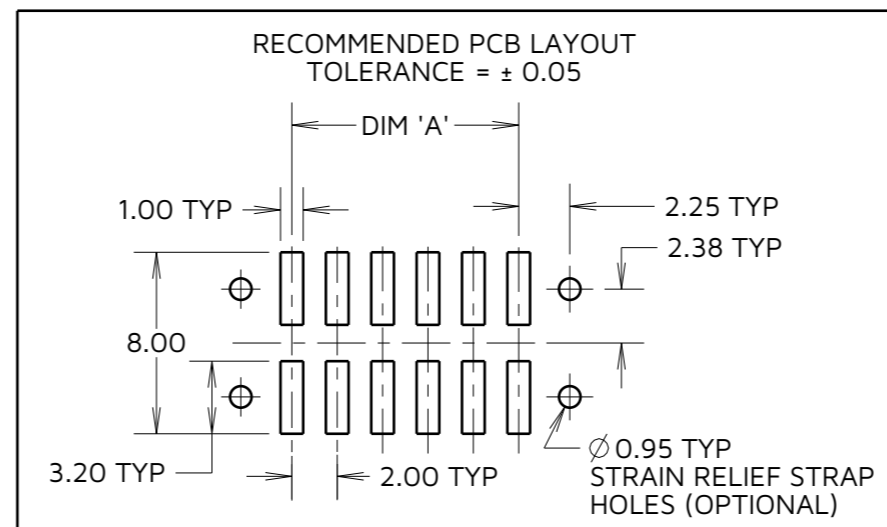
FOR COMPLETE SPECIFICATION, SEE COMPONENT SPECIFICATION C005XX (LATEST ISSUE)



PART No.	WEIGHT (g)
M80-82604XX	0.23
M80-82606XX	0.30
M80-82608XX	0.37
M80-82610XX	0.44
M80-82614XX	0.58
M80-82616XX	0.65
M80-82618XX	0.72
M80-82620XX	0.79
M80-82626XX	1.00
M80-82634XX	1.28

DIMENSION	CALCULATION
DIM 'A'	TOTAL No. OF CONTACTS - 2.00
DIM 'B'	TOTAL No. OF CONTACTS + 3.55

EXAMPLE: CONNECTOR WITH 20 CONTACTS  
DIM 'A' = 18.00mm  
DIM 'B' = 23.55mm



ORDER CODE:  
**M80-826XXXX**

TOTAL No. OF WAYS  
04, 06, 08, 10, 12,  
14, 16, 18, 20, 26,  
34

FINISH  
22 - SELECTIVE GOLD  
+ TIN/LEAD  
42 - SELECTIVE GOLD  
+ 100% TIN  
45 - GOLD

MJ	15	18.12.24	35293
NAME	ISS.	DATE	CN/CO
APPROVED:		M. JELLEY	
CHECKED:		R. ALEXANDER	
DRAWN:		I. SANDY	

NOTES:  
1. 2-OFF STRAIN RELIEF STRAPS M80-0030006 MAY BE USED WITH THIS CONNECTOR.  
2. M80-82620XX IS SHOWN FOR ILLUSTRATION PURPOSED, SEE ORDER CODE FOR VARIANTS

**HARWIN**

www.harwin.com

TOLERANCES  
X. = ±1mm  
X.X = ±0.50mm  
X.XX = ±0.20mm  
X.XXX = ±0.01mm  
ANGLES = ±5°  
UNLESS STATED

THIS DRAWING AND ANY INFORMATION OR DESCRIPTIVE MATTER SET OUT HEREON ARE CONFIDENTIAL AND COPYRIGHT PROPERTY OF THE HARWIN GROUP AND MUST NOT BE DISCLOSED, LOANED, COPIED OR USED FOR MANUFACTURING, TENDERING OR FOR ANY OTHER PURPOSE WITHOUT THEIR WRITTEN PERMISSION.

MATERIAL & FINISH:  
SEE ABOVE

TITLE: **DATAMATE L-TEK MALE DIL VERTICAL SMT ASSEMBLY - UNLATCHED**

DRAWING NUMBER:  
**M80-826XXXX**

SHT  
2 OF 2