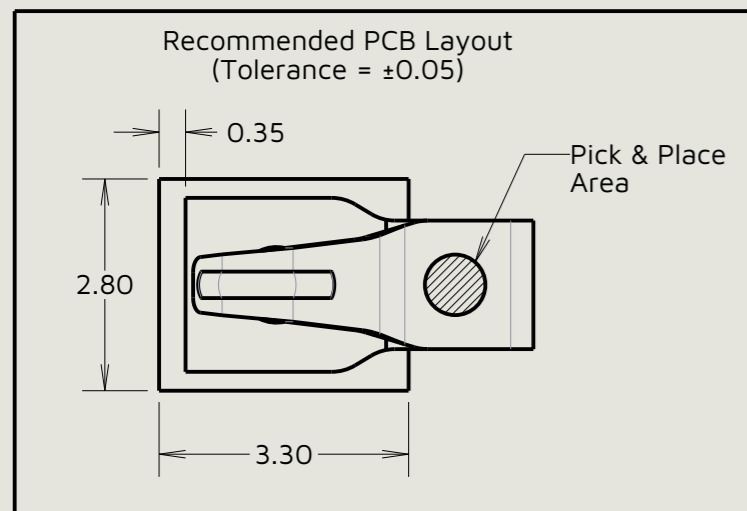


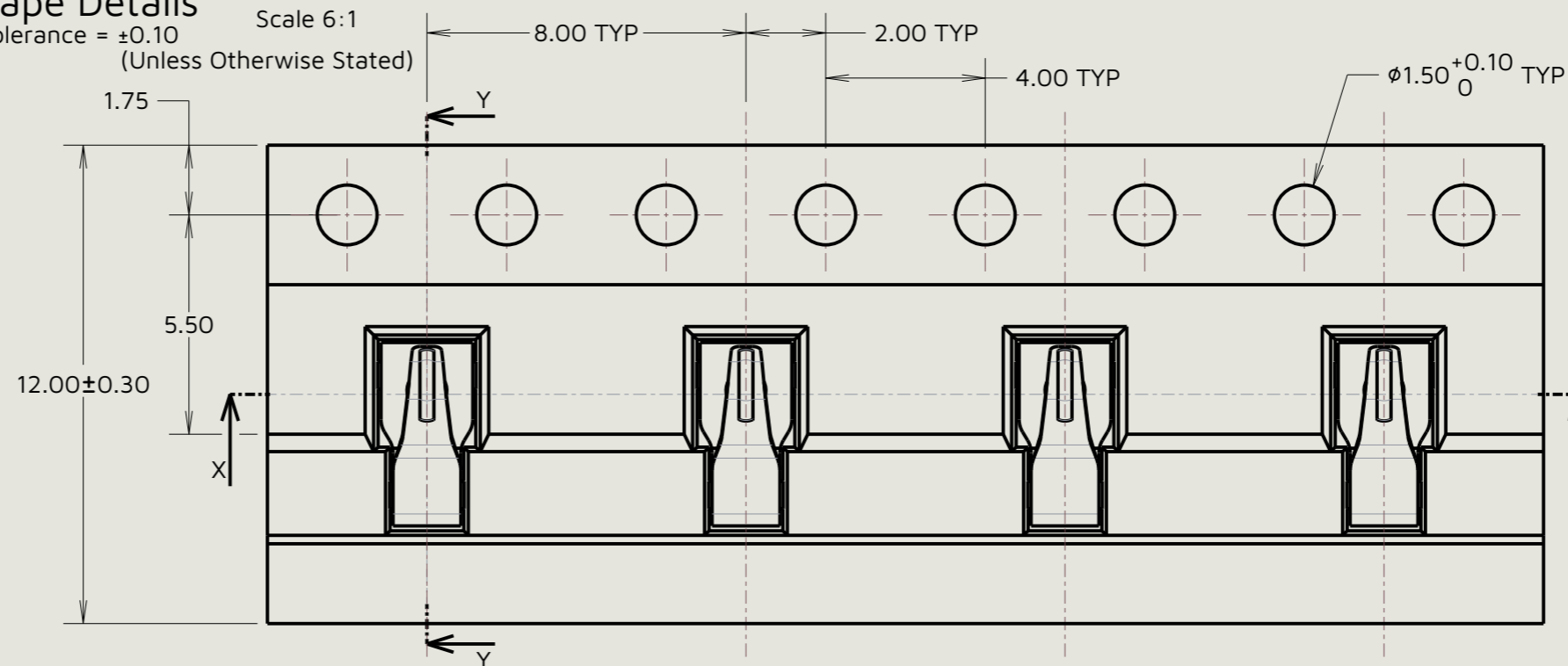
Customer Information Sheet



Tape Details

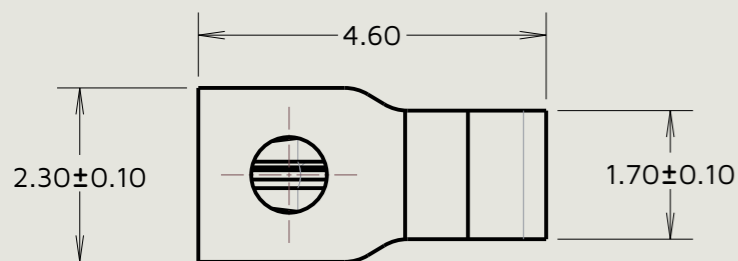
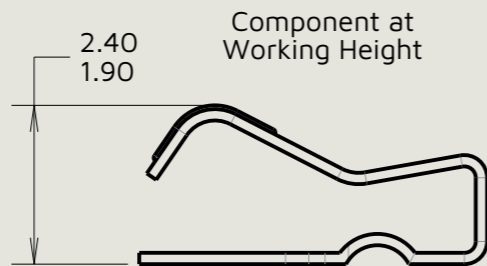
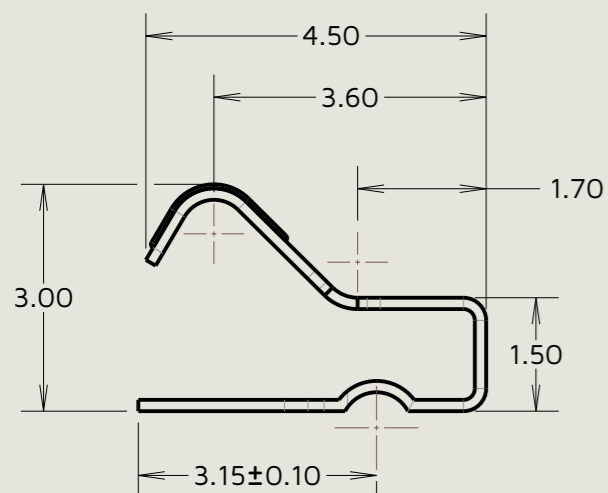
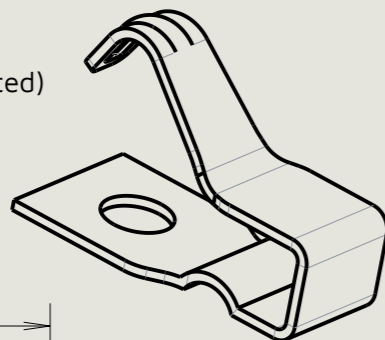
Tolerance = ±0.10
(Unless Otherwise Stated)

Scale 6:1

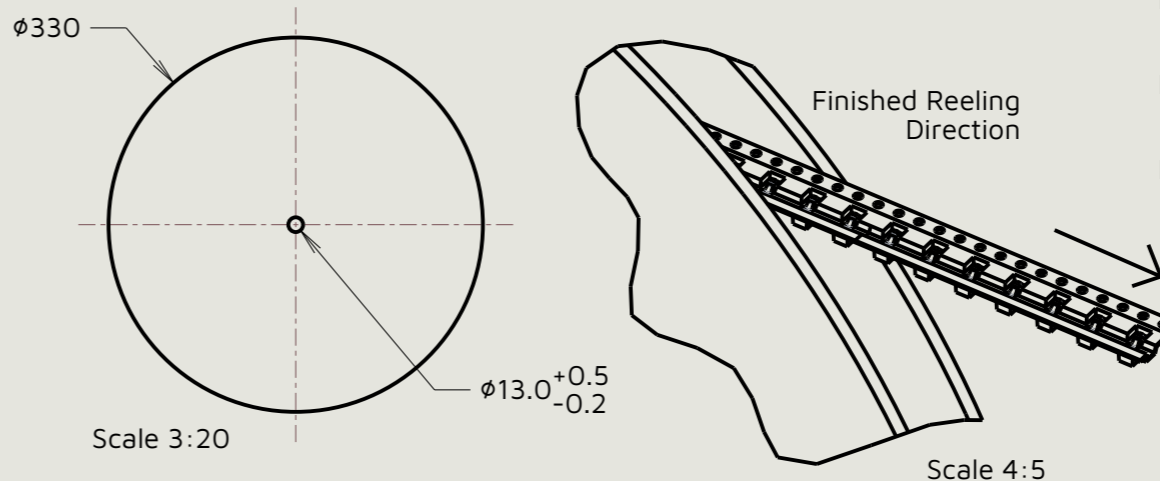


Component Details:

Tolerance = ±0.15
(Unless Otherwise Stated)



Reel Details



Specification:
Material = Phosphor Bronze, 0.15mm Thick
Finish = Gold flash over Nickel
Electrical:
Contact Resistance = 50mΩ Max
Current Rating = 1A
Mechanical:
Durability = 10,000 Cycles
Minimum Force at Working Height = 0.49N
Environmental:
Operating Temperature = -20°C to + 70°C

RA	6	15.12.25	37154
Initials	Rev.	Date	CO
SB	1	20.08.15	-----

Notes:
1. Quantity per reel = 2,000.
2. This product is taped and reeled in general accordance with EIA-481 (Electronics Industries Association).

 www.harwin.com	This drawing and any information or descriptive matter set out hereon are confidential and copyright property of the Harwin group and must not be disclosed, loaned, copied or used for manufacturing, tendering or for any other purpose without their written permission.	TOLERANCES X. = ±0.50mm X.X = ±0.30mm X.XX = ±0.10mm X.XXX = ±0.01mm Angles = ±5° Unless stated	Third angle projection 	MATERIAL: See above	Title: SMT Spring Contact (3.00mm High) in Tape and Reel
			Sheet scale: 2:1 Do not scale Sheet size: A3	FINISH: See above	Drawing number: S7151-45R