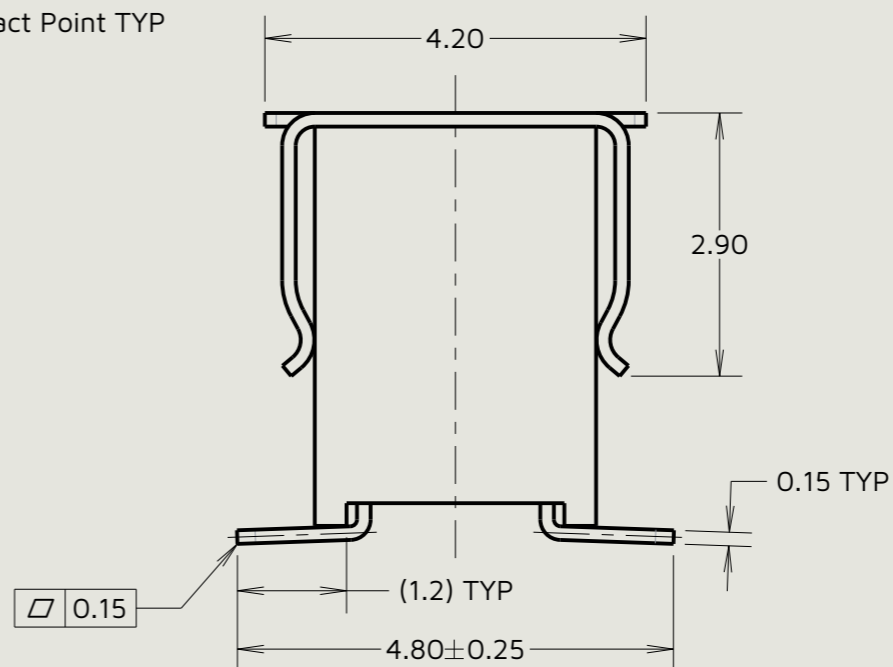
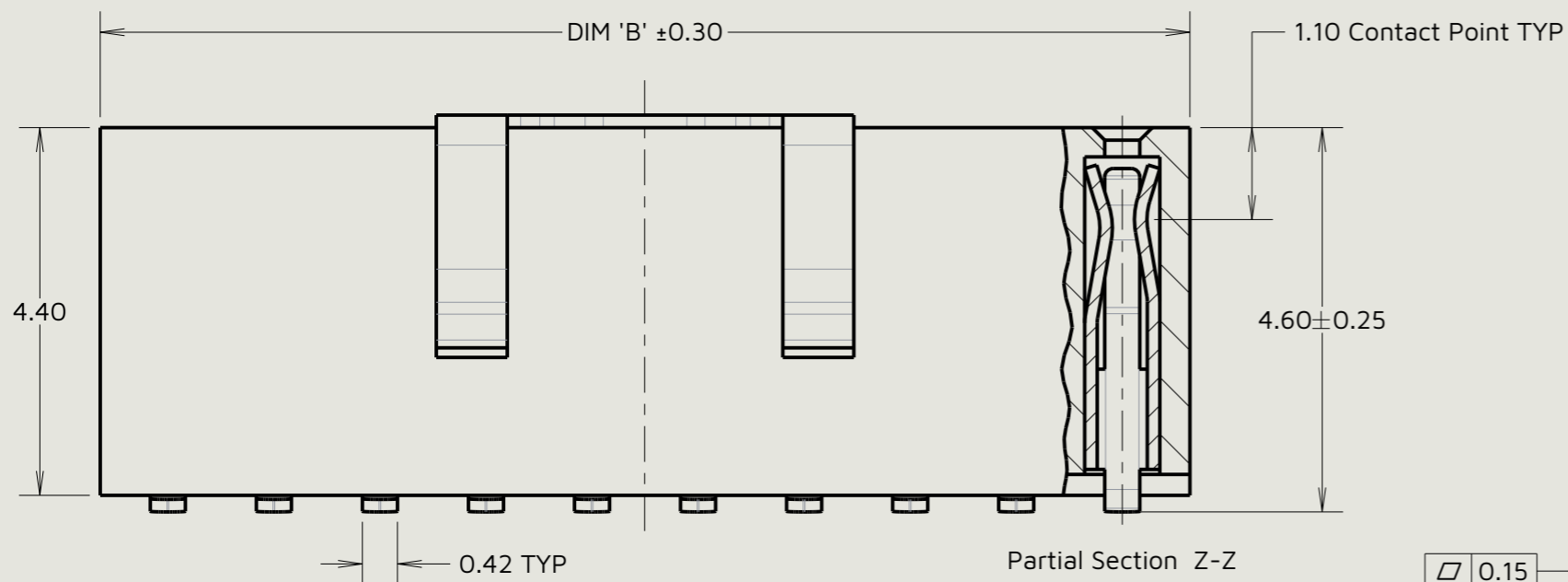
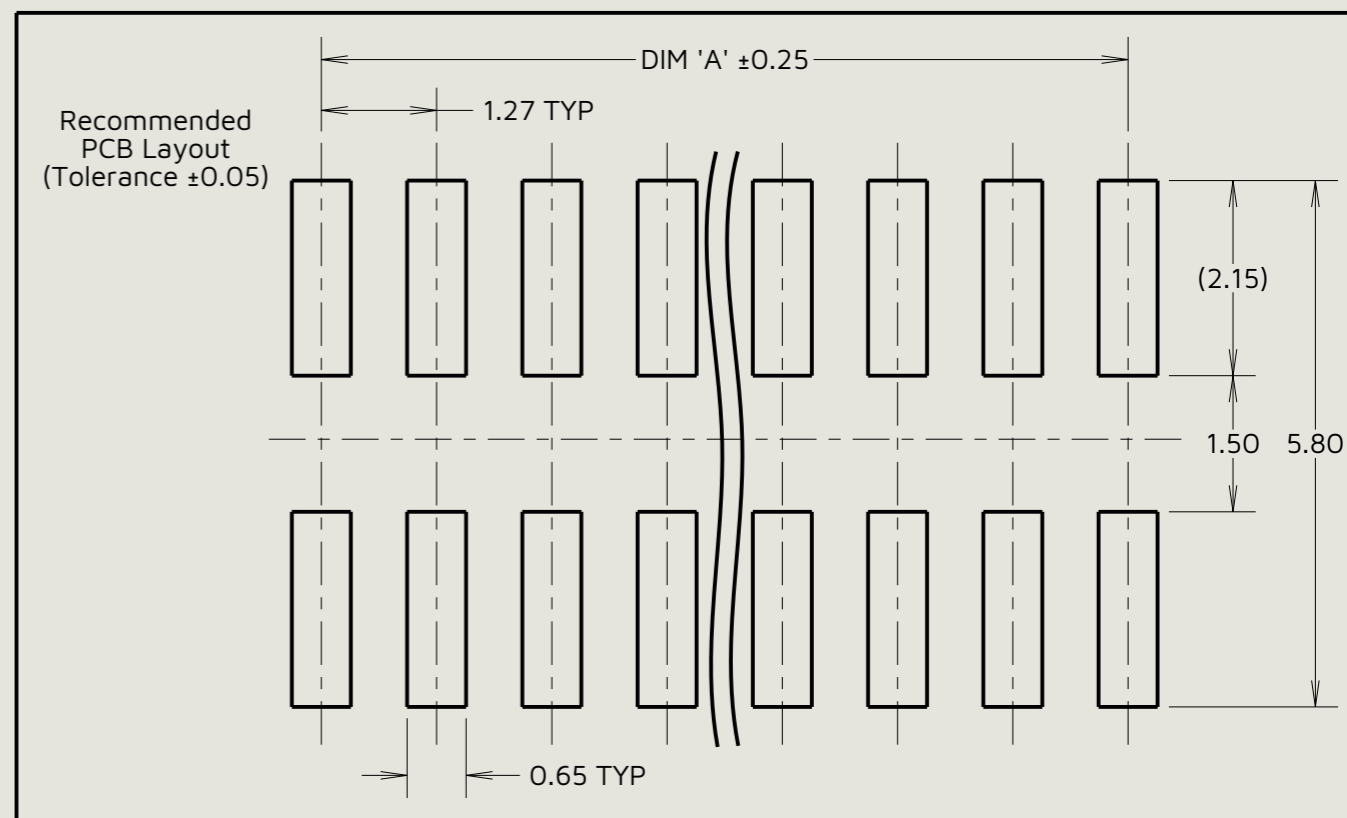
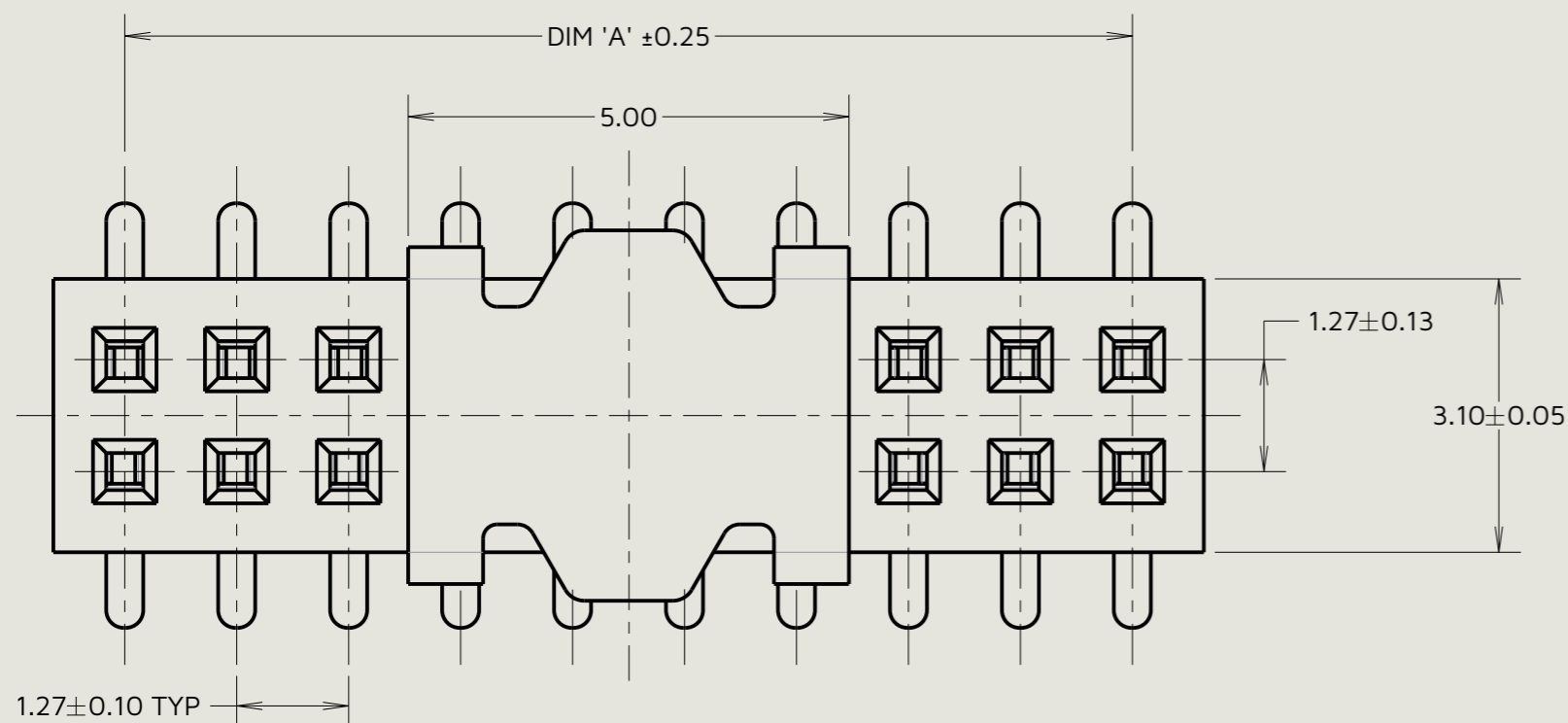


Customer Information Sheet



Specifications:

Material:
Housing = Nylon 6T UL94V-0, Black
Contact = Phosphor Bronze

Finish:
Contact = Gold Flash over Nickel

Packing:
Tape and Reel

For Complete Specification, See Component Specification C029XX (Latest Issue).

Part No.	DIM 'A' ±0.25	DIM 'B' ±0.30
M50-3100545R	5.08	6.70
M50-3100645R	6.35	7.97
M50-3101045R	11.43	13.05
M50-3102045R	24.13	25.75
M50-3102545R	30.48	32.10

Order Code: **M50-310XX45R**
No. of Contacts Per Row: 05, 06, 10, 20, 25

DF	8	16.12.25	37334
Initials	Rev.	Date	CO
RA	1	16.05.11	-----

Notes:
1. All tolerances are ±0.15 unless otherwise stated.
2. For Tape and Reel details, see Sheet 4.

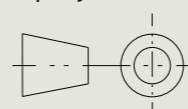
HARWIN
www.harwin.com

This drawing and any information or descriptive matter set out hereon are confidential and copyright property of the Harwin group and must not be disclosed, loaned, copied or used for manufacturing, tendering or for any other purpose without their written permission.

TOLERANCES

X. = ±0.50mm
X.X = ±0.30mm
X.XX = ±0.10mm
X.XXX = ±0.01mm
Angles = ±5°
Unless stated

Third angle projection



Sheet scale: 12:1
Do not scale
Sheet size: A3

MATERIAL:

See Specifications

FINISH:

See Specifications

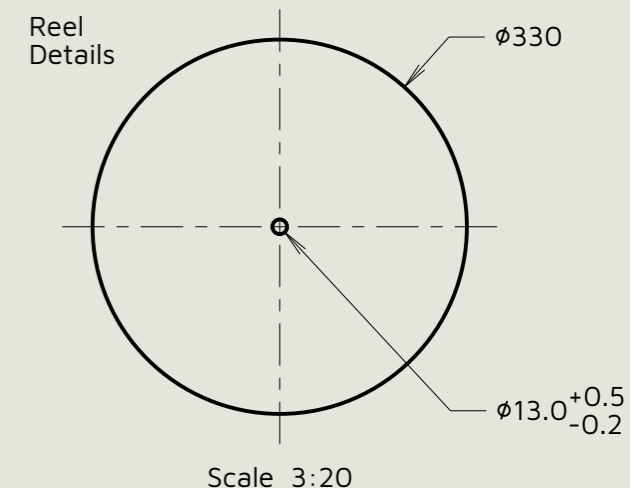
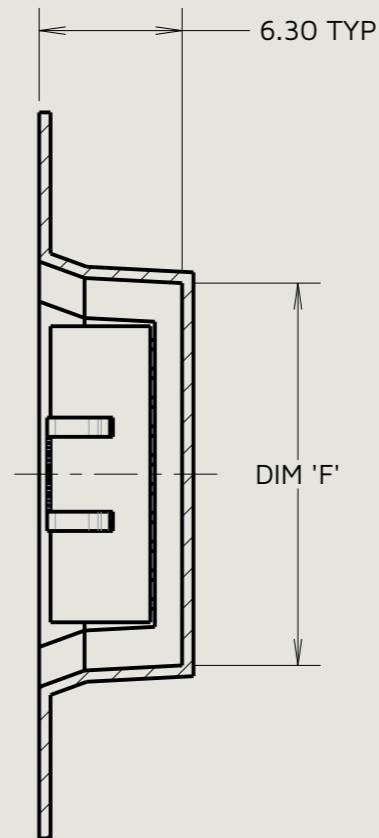
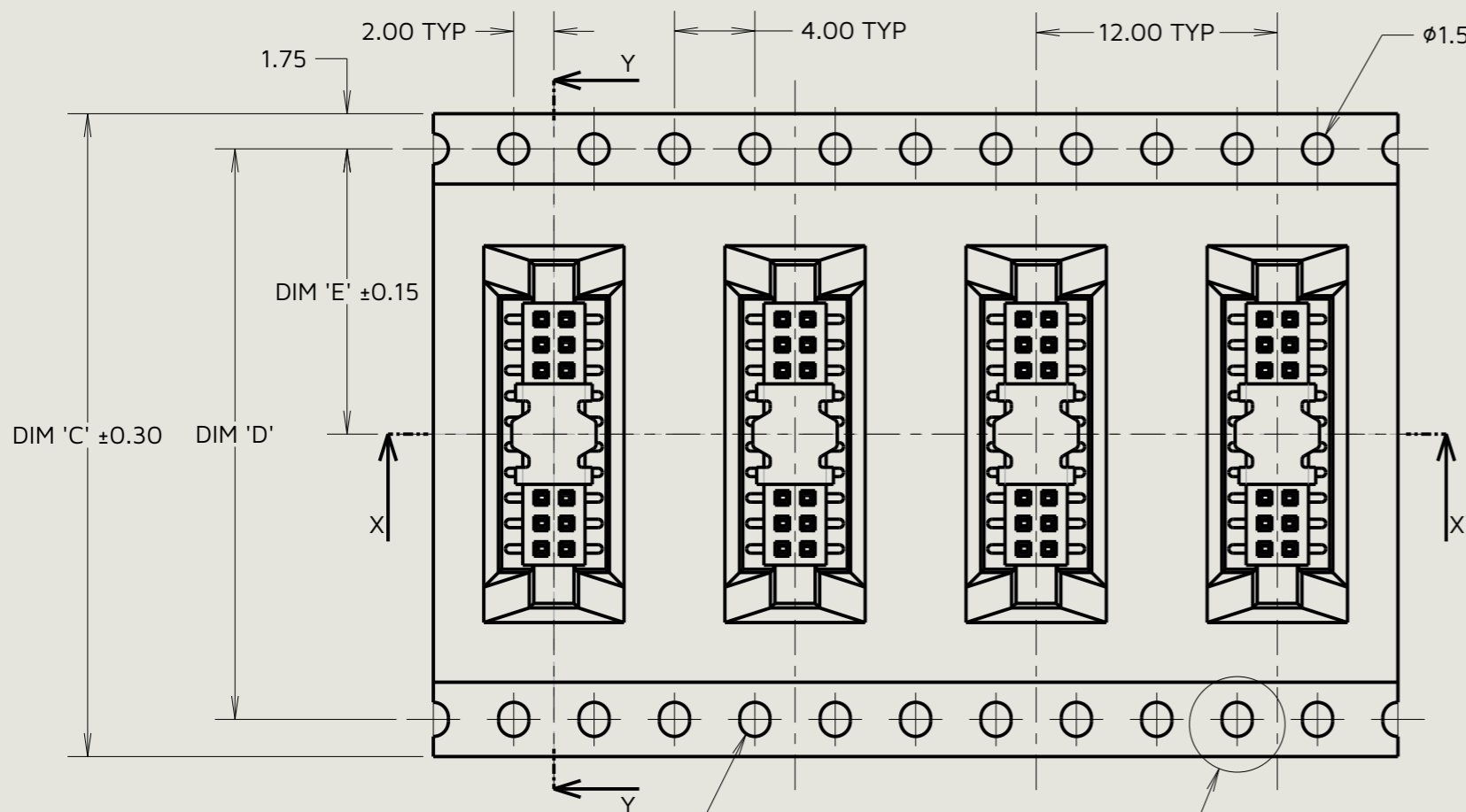
Title:

1.27mm Pitch DIL Vertical SMT Socket (Reeled)

Drawing number:

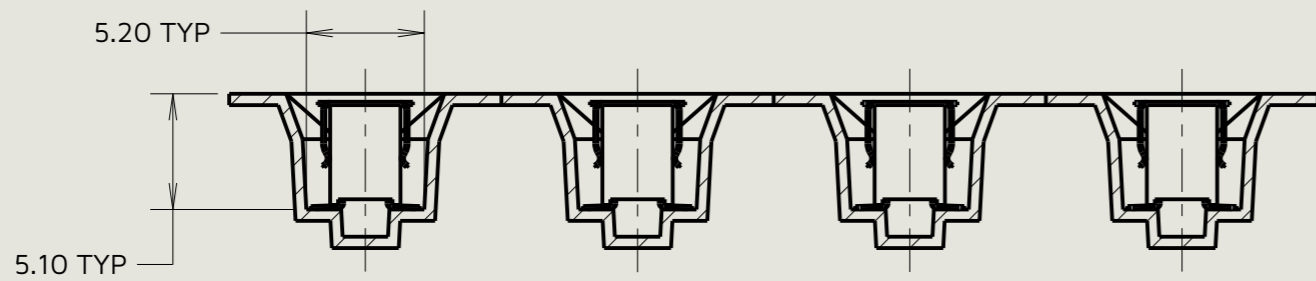
M50-310XX45R

Customer Information Sheet



Elongated Sprocket Hole (See Note 6)

Detail A



Section X-X

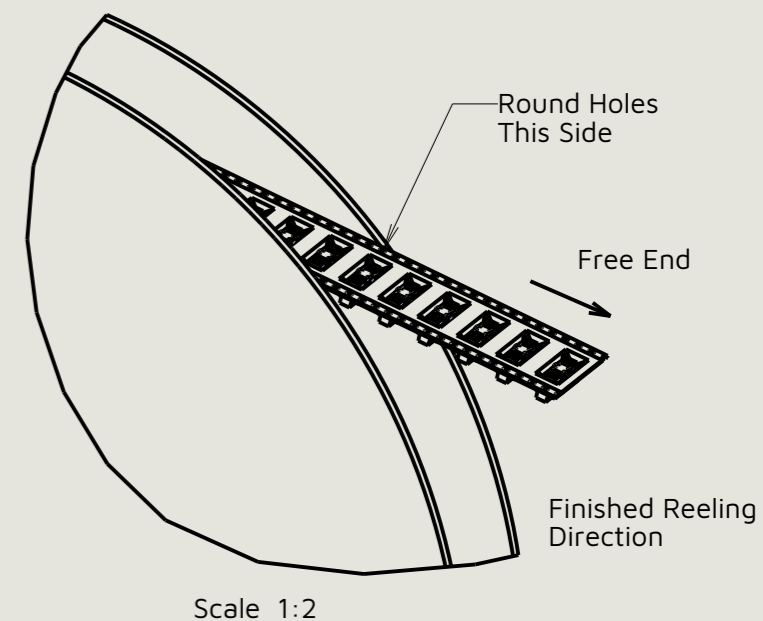
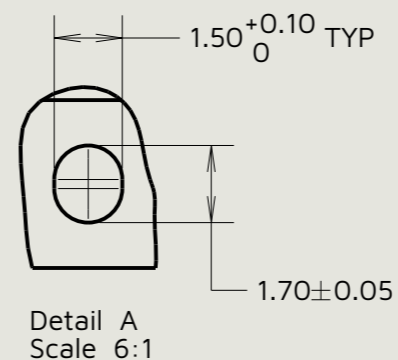


Table 2: Tape and Reel Dimension Variants

Part Number	DIM 'C' ± 0.30	DIM 'D'	DIM 'E' ± 0.15	DIM 'F'	QTY Per Reel
M50-3100545R	24.00	N/A	11.50	10.50	900
M50-3100645R	24.00	N/A	11.50	11.77	900
M50-3101045R	32.00	28.40	14.20	16.85	1000
M50-3102045R	44.00	40.40	20.20	29.55	900
M50-3102545R	56.00	52.40	26.20	35.90	800

Order Code:
M50-310XX45R

No. of Contacts Per Row: _____
05, 06, 10, 20, 25

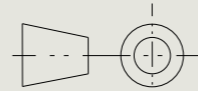
DF	8	16.12.25	37334
Initials	Rev.	Date	CO
RA	1	16.05.11	-----

- Notes:
- For connector details, see Sheet 3.
 - Tape and Reel in general accordance with EIA-481 (Electronic Industries Association).
 - Pick & place cap is the same for all sizes.
 - Elongated sprocket hole not present on 05 & 06 variants.

HARWIN
www.harwin.com

This drawing and any information or descriptive matter set out hereon are confidential and copyright property of the Harwin group and must not be disclosed, loaned, copied or used for manufacturing, tendering or for any other purpose without their written permission.

TOLERANCES
X. = ± 0.50 mm
X.X = ± 0.30 mm
X.XX = ± 0.10 mm
X.XXX = ± 0.01 mm
Angles = $\pm 5^\circ$
Unless stated

Third angle projection

Sheet scale: 3:1
Do not scale
Sheet size: A3

MATERIAL:
See Sheet 3
FINISH:
See Sheet 3

Title:
1.27mm Pitch DIL Vertical SMT Socket (Reeled)
Drawing number:
M50-310XX45R