

# HARWIN

CONNECT TECHNOLOGY  
WITH CONFIDENCE

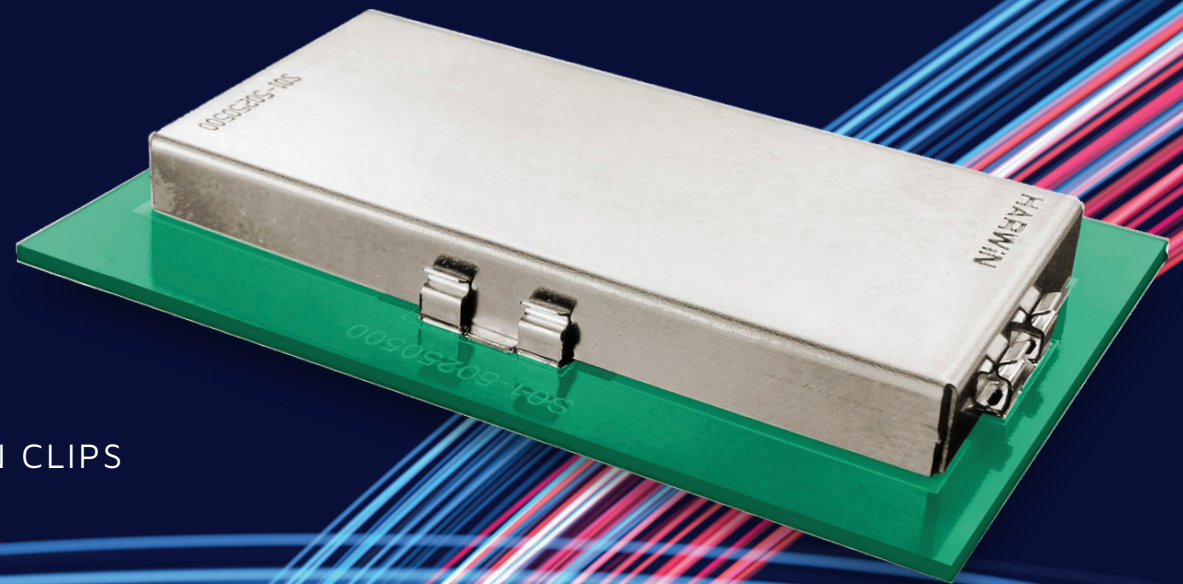


**Ezi**  
RANGE

## SHIELDING

# BOARD LEVEL RFI/EMC SHIELDING

REPLACEABLE SHIELD CANS AND SMT RETENTION CLIPS



# HARWIN

## SHIELDING

# Ezi SHIELDING FROM HARWIN.

## REPLACEABLE SHIELD CANS AND SMT RETENTION CLIPS

Speed up board-level shielding with a Clip and Can system. Faster to assemble, eliminates hand soldering, prevents hot spots and damage to vulnerable devices.

Traditional board-level shielding requires hand soldering to the PCB after the other components and devices have been assembled and reflow soldered.

With surface-mounted clips and push-on cans, the soldering is carried out with the rest of the PCB. Supplied on Tape and reel with pick and place zones, full automation is easy.

The cans are then hand-assembled in a very fast secondary operation – just push into place. No additional skilled secondary soldering required, no danger of heat damage to nearby components.

Cans are also easy to remove, re-use and replace for any maintenance, rework or upgrade under the shield. Fast and clean – no de-soldering clean-up activity.

## FEATURES

- No secondary soldering operations, fast and simple to assemble
- Re-usable shield cans easy to remove for rework and maintenance
- SMT retaining clips supplied tape and reeled for volume automation

## APPLICATIONS

- Industrial
- Wireless modules
- New space
- Motorsport
- Avionics and space



# SHIELDING

## SPECIFICATIONS

MATERIALS	ELECTRICAL	MECHANICAL	ENVIRONMENTAL
Removable Cans: <b>Nickel Silver, clean finish</b>	Can area sizes: <b>10mm x 10mm min</b> <b>50mm x 25mm max</b>	Can packaging: <b>Tape &amp; Reel</b> <b>Tape &amp; Reel strips</b>	Compliance: <b>RoHS Compliant</b> <b>REACH / CMRT statements</b>
	Can height sizes (internal): <b>2.5mm to 6mm</b>		
	Can thicknesses: <b>0.15mm, 0.20mm, 0.30mm</b>		
SMT Retention Clips: <b>Copper Alloy or Stainless Steel,</b> <b>Tin Plating</b>	SMT Clip heights: <b>0.8mm to 5.45mm</b>	SMT Clip packaging: <b>Tape &amp; Reel</b>	
	SMT Clip thickness allowances: <b>0.13mm to 1.00mm</b>		

Specifications are subject to change.



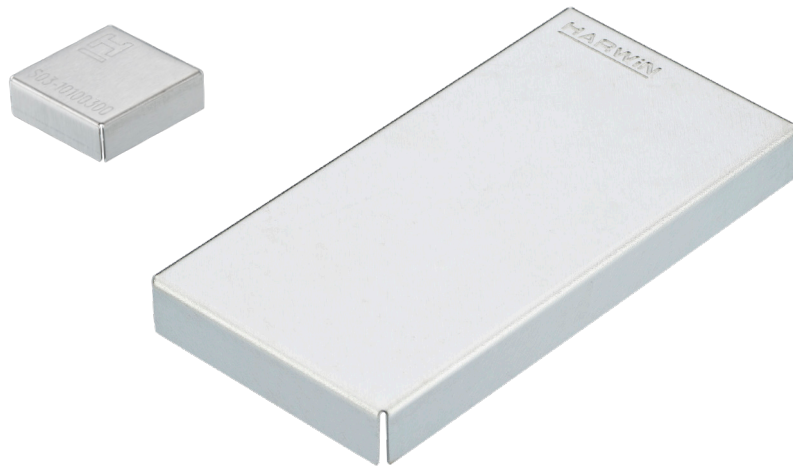
# SHIELDING

## PRODUCT CATEGORIES

### REMOVABLE EMC/RFI SHIELD CANS

Simple 5-sided nickel-silver cans for board level shielding (BLS). When used with retention clips, these cans are easy to remove and replace for fault-checking, maintenance, chip and module upgrades.

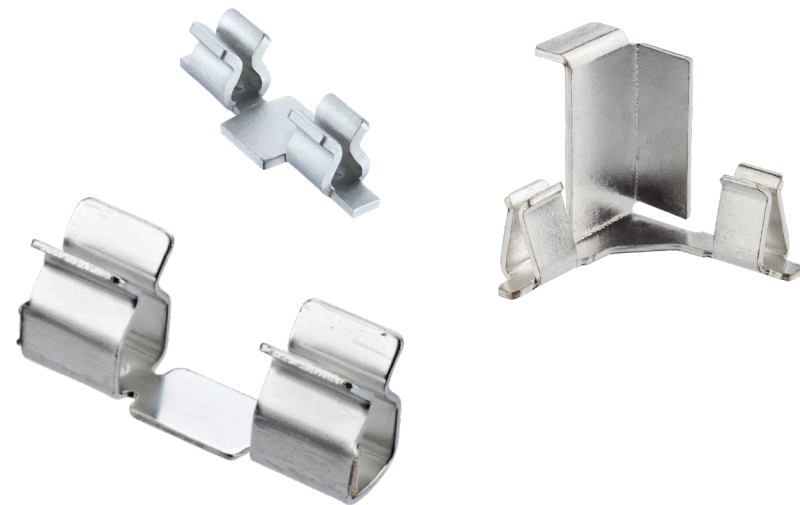
No soldering removes any risk of heat damage and hotspots that could damage the enclosed components. Available in 0.15mm, 0.2mm or 0.3mm thicknesses for matching to different EMI/RFI characteristics.



### SMT RETENTION CLIPS

Use with the removable EMC shield cans for a simple and cost-effective method of PCB shielding. Clips are supplied in Tape and Reel packaging, ready for automated pick and place in low or high volume production. No additional soldering operation required.

Range includes compact, corner, low profile and high force options. Suitable for can thicknesses from 0.13mm to 1.00mm.



Specifications are subject to change.



VIEW FULL SERIES & SPECIFICATIONS [HERE](#)



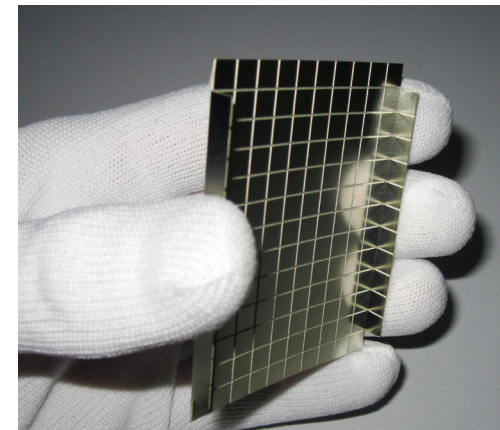
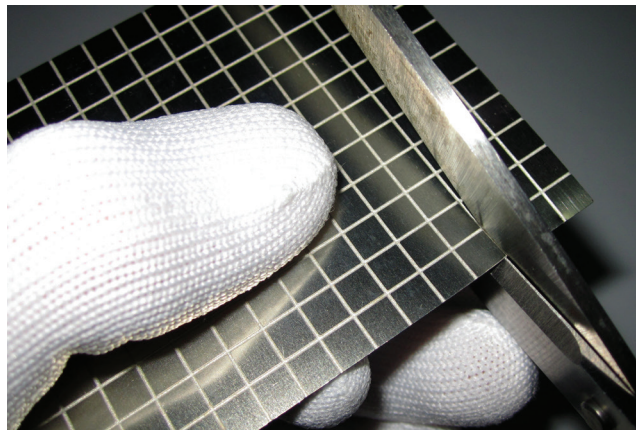
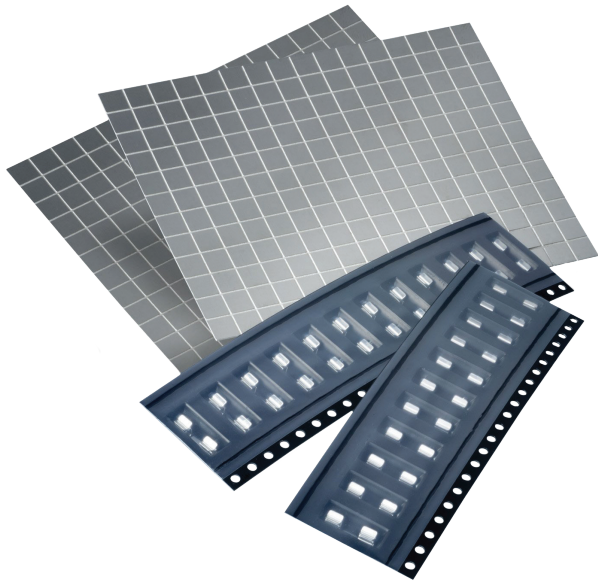
# SHIELDING

## PRODUCT CATEGORIES

### RFI SHIELD CAN DEVELOPMENT KIT

Make your own Shield Can in minutes. Kit contains 2 x DIY shield can blank sheets, scored at 5mm intervals for easy folding. Simple 5-sided nickel-silver cans for board level shielding (BLS). Includes 24 x SMT clips and an instruction sheet.

Great for prototyping – make cans up to 50mm x 70mm, 5mm high.



Specifications are subject to change.




VIEW FULL SERIES & SPECIFICATIONS [HERE](#)



# SHIELDING

## DOWNLOADS


### PRODUCT TRAINING

Product Training Module (PTM) 

Shield Can Kit Instruction Sheet 

SMT Shield Clip comparison chart 

### TEST REPORTS

**HT026** – Shield Clips S1411, S1711, S1721 Environmental (Vibration, Shock, Bump) 

**HT066** – Shield Clips S9011, S9021 - General 

Specifications are subject to change.



VIEW FULL SERIES & SPECIFICATIONS  **HERE**

# HARWIN

CONNECT TECHNOLOGY  
WITH CONFIDENCE



**HRI**  
RANGE



**BBI**  
RANGE



**Ezi**  
RANGE

FOR FURTHER INFORMATION PLEASE CONTACT:

[SUPPORT@HARWIN.COM](mailto:SUPPORT@HARWIN.COM)

[WWW.HARWIN.COM](http://WWW.HARWIN.COM) ○