

Customer Information Sheet

IF IN DOUBT - ASK



NOT TO SCALE

THIRD ANGLE PROJECTION

ALL DIMENSIONS IN mm

SPECIFICATION:

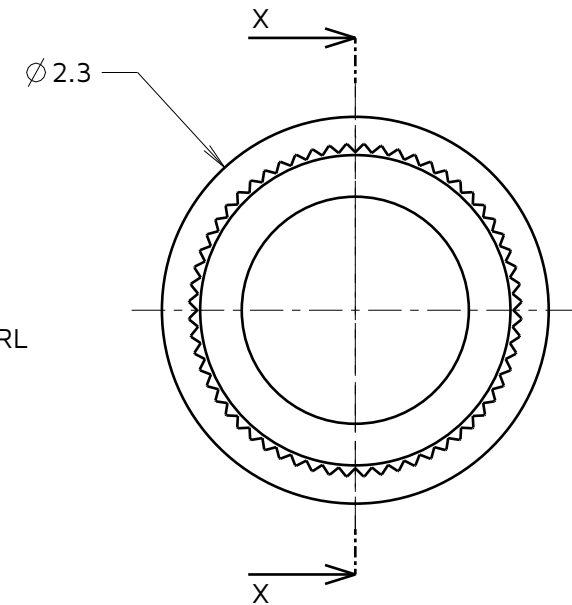
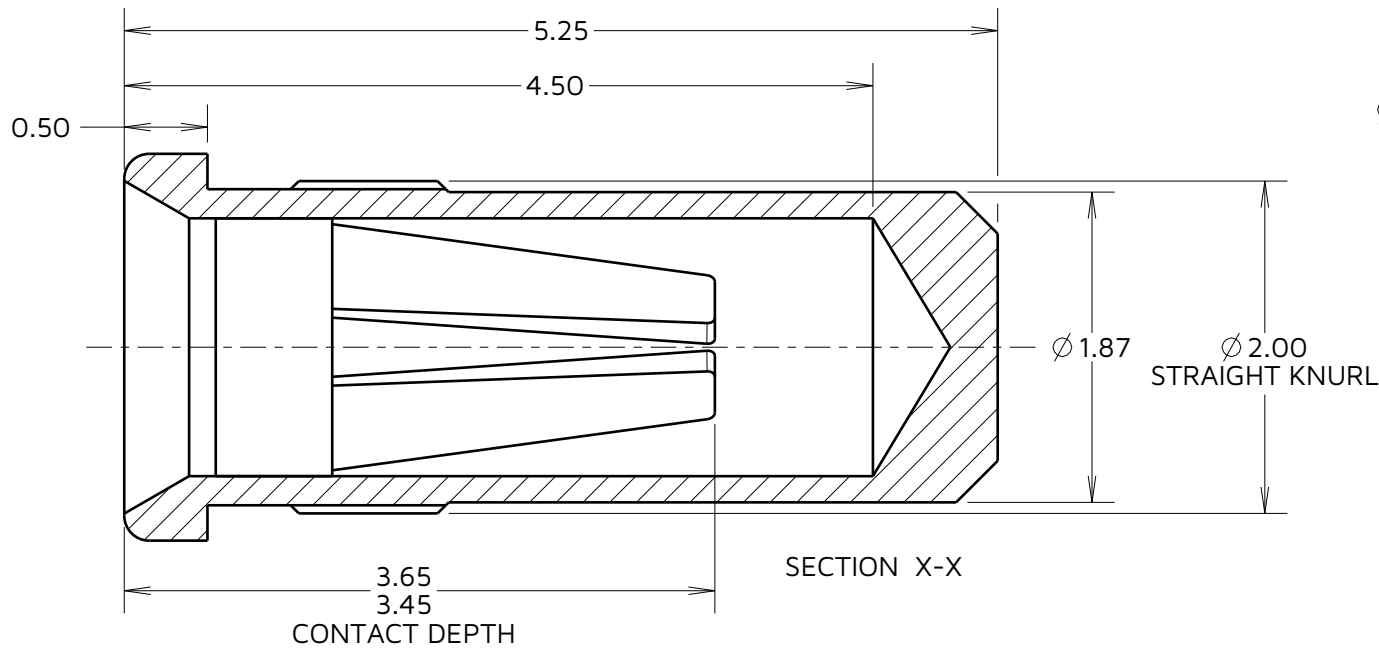
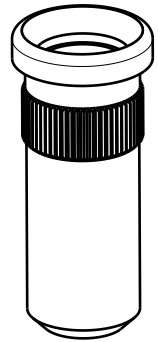
MATERIALS:

SHELL = BRASS

CLIP = BERYLLIUM COPPER

FOR COMPLETE MECHANICAL AND ELECTRICAL SPECIFICATION
SEE COMPONENT SPECIFICATION C009XX (LATEST ISSUE).

FINISH: SEE ORDER CODE



NOTES:

1. RECOMMENDED MOUNTING HOLE SIZE = $\phi 1.9$ TO $\phi 2.0$ mm
2. RECOMMENDED PIN SIZE = $\phi 0.90$ TO 1.05 mm

ORDER CODE:

H3161-XX

FINISH:

- 01 = GOLD CLIP, TIN SHELL
- 05 = GOLD CLIP, GOLD SHELL
- 46 = 100% TIN CLIP, TIN SHELL

MJ	21	27.06.24	34124
NAME	ISS.	DATE	CN/CO
APPROVED:		M. JELLEY	
CHECKED:		R. PORTLOCK	
DRAWN:		I. SANDY	

HARWIN

www.harwin.com

TOLERANCES

- X. = ± 1 mm
- X.X = ± 0.50 mm
- X.XX = ± 0.20 mm
- X.XXX = ± 0.01 mm
- ANGLES = $\pm 5^\circ$
- UNLESS STATED

THIS DRAWING AND ANY INFORMATION OR DESCRIPTIVE MATTER SET OUT HEREON ARE CONFIDENTIAL AND COPYRIGHT PROPERTY OF THE HARWIN GROUP AND MUST NOT BE DISCLOSED, LOANED, COPIED OR USED FOR MANUFACTURING, TENDERING OR FOR ANY OTHER PURPOSE WITHOUT THEIR WRITTEN PERMISSION.

MATERIAL & FINISH:

SEE ABOVE

TITLE:

**SOCKET ASSEMBLY
FOR $\phi 1.00$ mm PIN**

DRAWING NUMBER:

H3161-XX

SHT
2
OF 2