

Customer Information Sheet

IF IN DOUBT - ASK

©

NOT TO SCALE

THIRD ANGLE PROJECTION

ALL DIMENSIONS IN mm

SPECIFICATIONS:

MATERIAL:
 HOUSING = GLASS-FILLED PPS, UL94V-0, BLACK
 CONTACT = BRASS
 JACKSCREW & BOARDMOUNT = STAINLESS STEEL
FINISH
 CONTACT = GOLD
PACKING:
 BAG
 FOR COMPLETE SPECIFICATION, SEE COMPONENT SPECIFICATION C005XX (LATEST ISSUE)

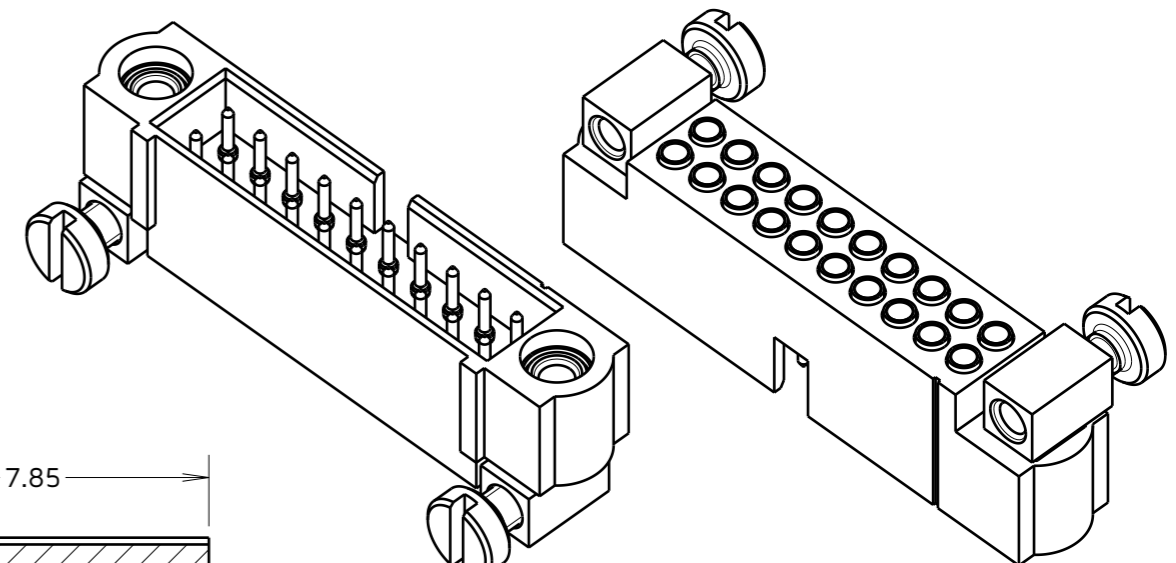
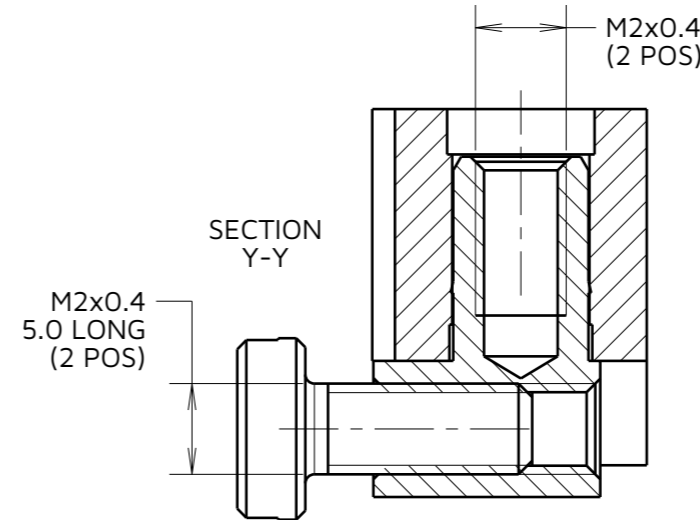
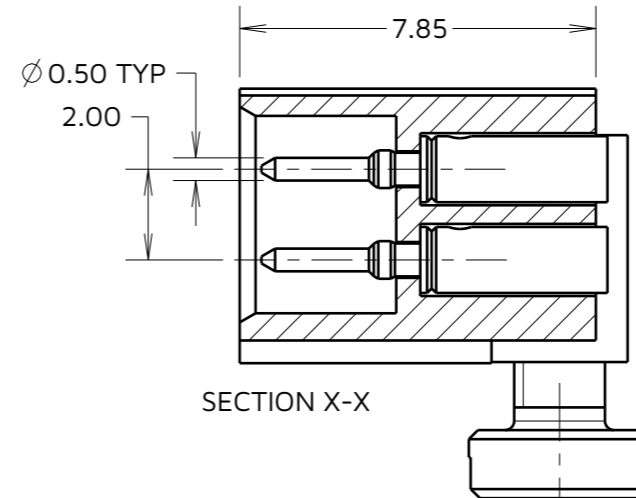
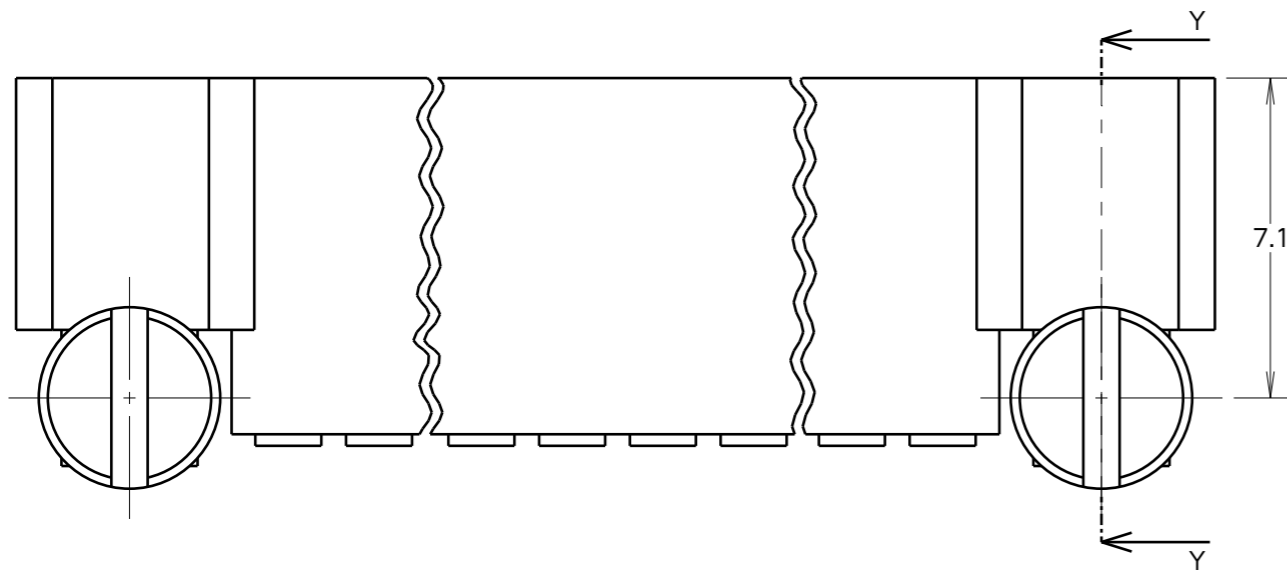
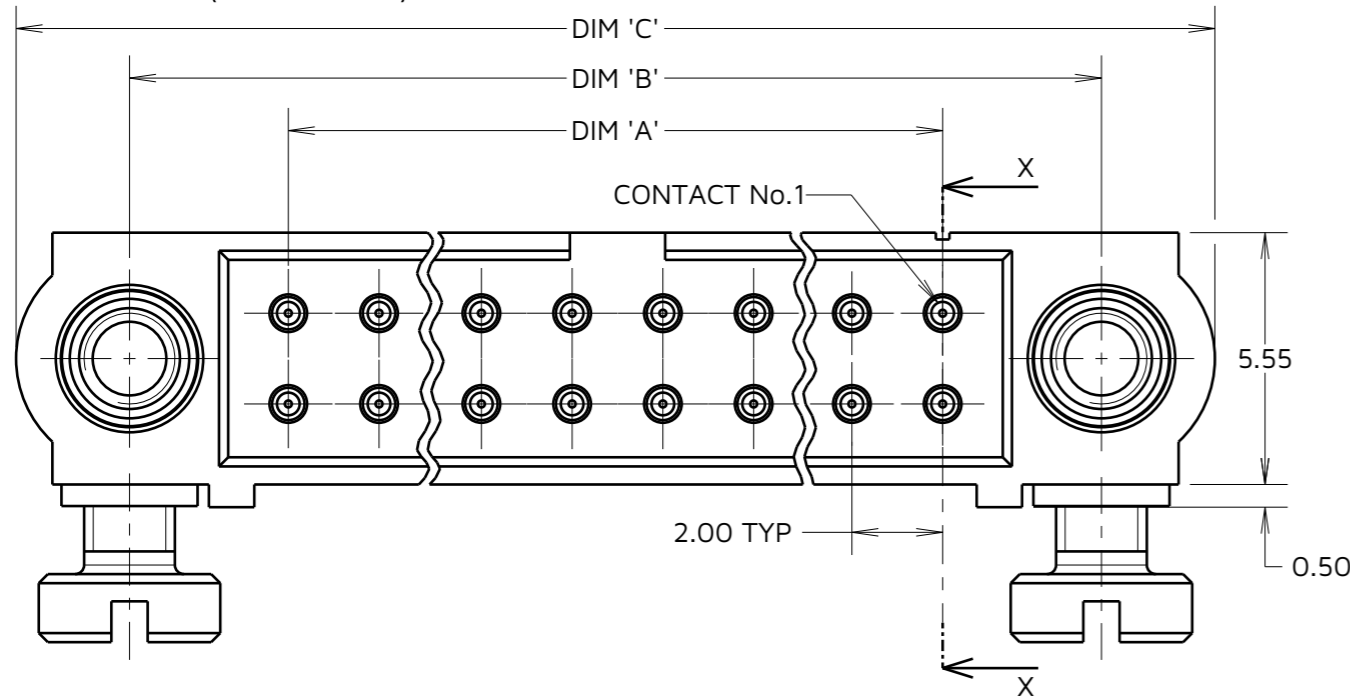
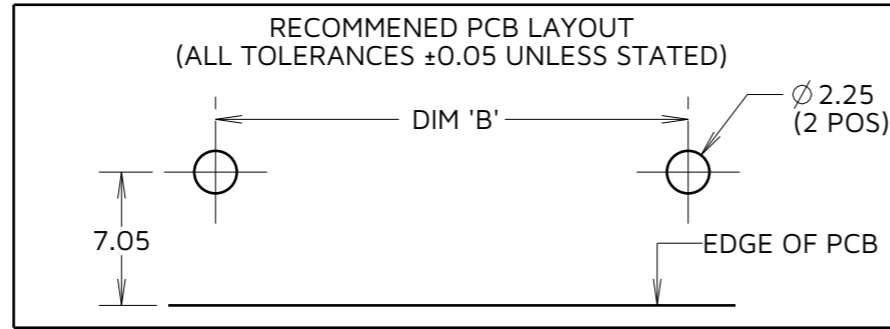


TABLE 1: DIMENSION VARIANTS

PART No.	DIM 'A'	DIM 'B'	DIM 'C'
M80-5C10405M5	2.00	9.00	14.0
M80-5C10605M5	4.00	11.00	16.0
M80-5C10805M5	6.00	13.00	18.0
M80-5C11005M5	8.00	15.00	20.0
M80-5C11205M5	10.00	17.00	22.0
M80-5C11405M5	12.00	19.00	24.0
M80-5C11605M5	14.00	21.00	26.0
M80-5C11805M5	16.00	23.00	28.0
M80-5C12005M5	18.00	25.00	30.0
M80-5C12205M5	20.00	27.00	32.0
M80-5C12405M5	22.00	29.00	34.0
M80-5C12605M5	24.00	31.00	36.0
M80-5C12805M5	26.00	33.00	38.0
M80-5C13005M5	28.00	35.00	40.0
M80-5C13205M5	30.00	37.00	42.0
M80-5C13405M5	32.00	39.00	44.0
M80-5C13605M5	34.00	41.00	46.0
M80-5C13805M5	36.00	43.00	48.0
M80-5C14005M5	38.00	45.00	50.0
M80-5C14205M5	40.00	47.00	52.0
M80-5C14405M5	42.00	49.00	54.0
M80-5C14605M5	44.00	51.00	56.0
M80-5C14805M5	46.00	53.00	58.0
M80-5C15005M5	48.00	55.00	60.0

NOTES:

- CONNECTORS ARE SUPPLIED WITH CONTACTS LOOSE.
- FOR EXTRA CONTACTS, USE PART NUMBER M80-1950005.
- RECOMMENDED WIRE TYPE = BS 3G 210 TYPE A, PTFE INSULATED 24-28 AWG. MAX INSULATION DIAMETER = $\phi 1.10\text{mm}$, STRIP WIRE BY 2.00mm.
- RECOMMENDED HAND CRIMP TOOL = M22520/2-01 WITH POSITIONER Z80-193. REFER TO TOOLING INSTRUCTION SHEET IS-01 FOR COMPLETE CRIMPING INSTRUCTIONS. CONTACT INSERTION & EXTRACTION TOOL = Z80-280. REFER TO TOOLING INSTRUCTION SHEET IS-25 FOR ASSEMBLY INSTRUCTIONS.
- RECOMMENDED HOLE SIZE FOR BOARDMOUNT = $\phi 2.25 \pm 0.05\text{mm}$
- PART M80-5C11605M5 SHOWN FOR ILLUSTRATIVE PURPOSES ONLY.

ORDER CODE:
M80-5C1XX05M3

TOTAL No. OF CONTACTS
 04 TO 50
 (EVEN NUMBERS ONLY)

MJ	5	01.10.24	34803
NAME	ISS.	DATE	CN/CO
APPROVED: M. JELLEY			
CHECKED: A.YEOMANS			
DRAWN: R.ADDE			

HARWIN

www.harwin.com

TOLERANCES
 X. = $\pm 1\text{mm}$
 X.X = $\pm 0.50\text{mm}$
 X.XX = $\pm 0.20\text{mm}$
 X.XXX = $\pm 0.01\text{mm}$
 ANGLES = $\pm 5^\circ$
 UNLESS STATED

THIS DRAWING AND ANY INFORMATION OR DESCRIPTIVE MATTER SET OUT HEREON ARE CONFIDENTIAL AND COPYRIGHT PROPERTY OF THE HARWIN GROUP AND MUST NOT BE DISCLOSED, LOANED, COPIED OR USED FOR MANUFACTURING, TENDERING OR FOR ANY OTHER PURPOSE WITHOUT THEIR WRITTEN PERMISSION.

MATERIAL & FINISH:
 SEE ABOVE

TITLE: DATAMATE J-TEK
 MALE CRIMP ASSY (SMALL BORE)
 WITH BOARDMOUNT JACKSCREW

DRAWING NUMBER:
M80-5C1XX05M5

SHT
 2 OF 2