

Customer Information Sheet

IF IN DOUBT - ASK

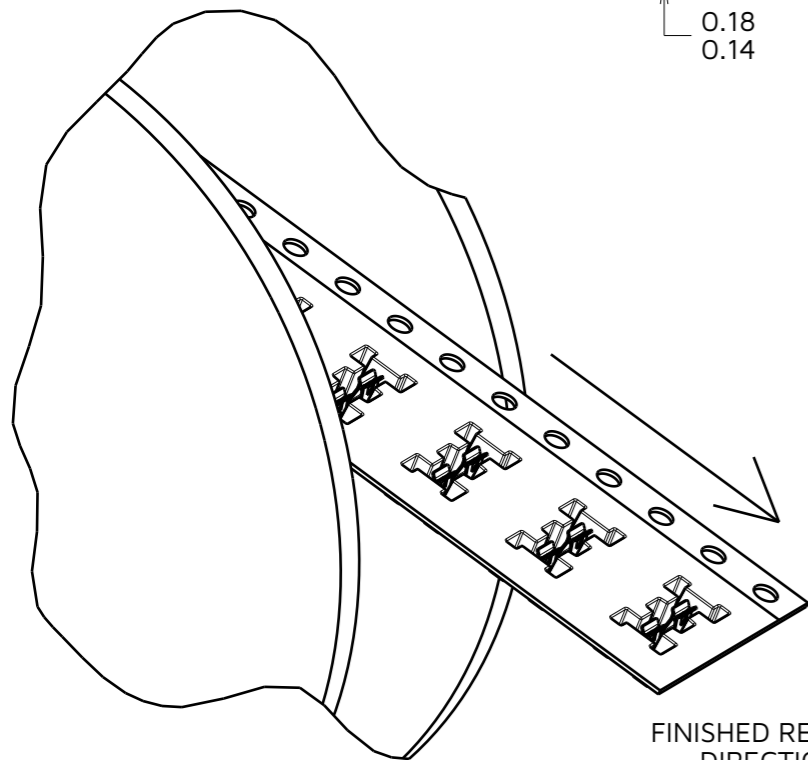
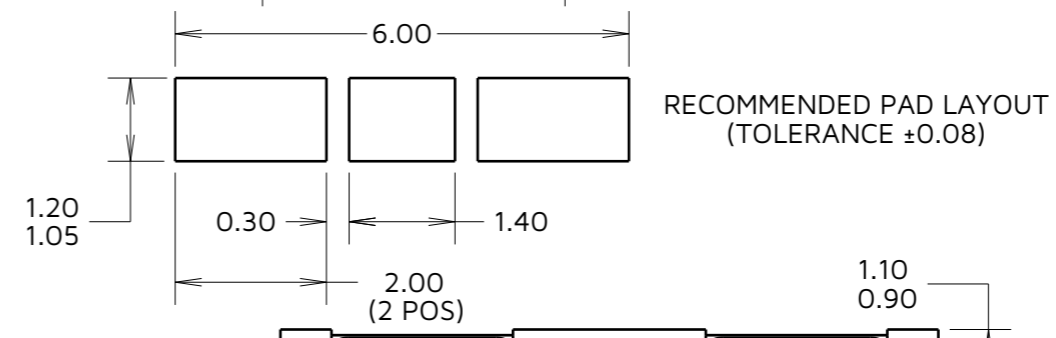
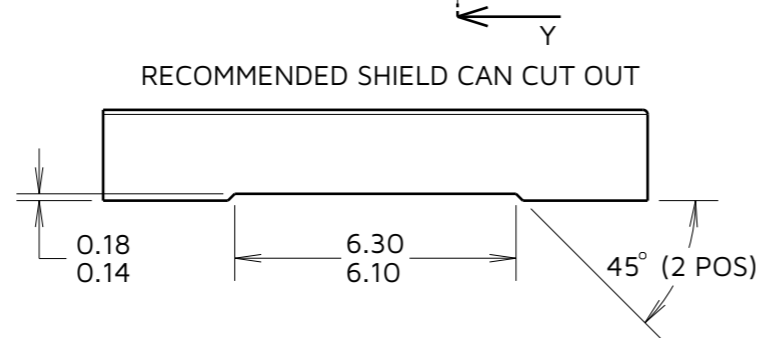
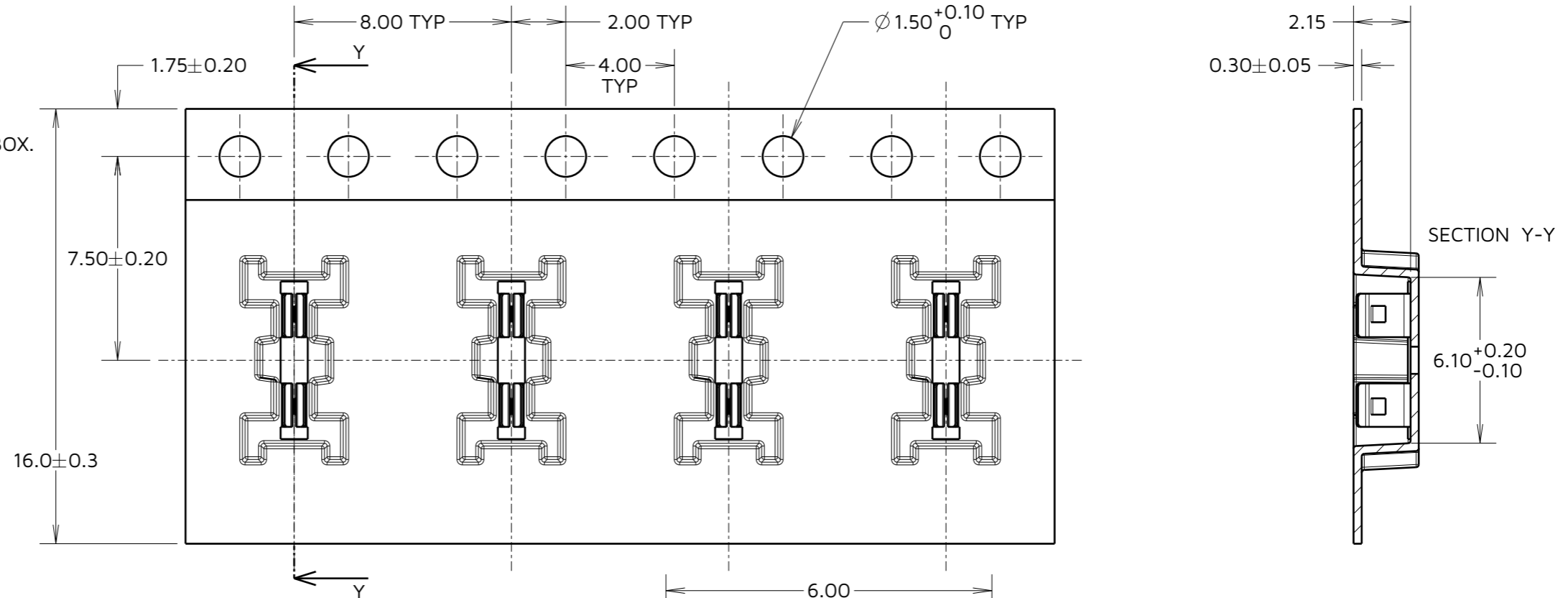
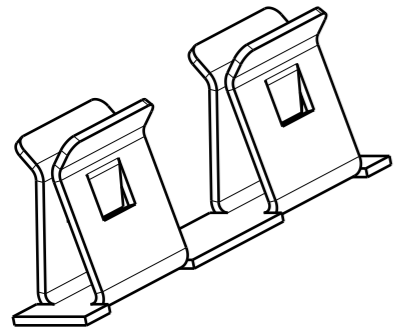
©

NOT TO SCALE

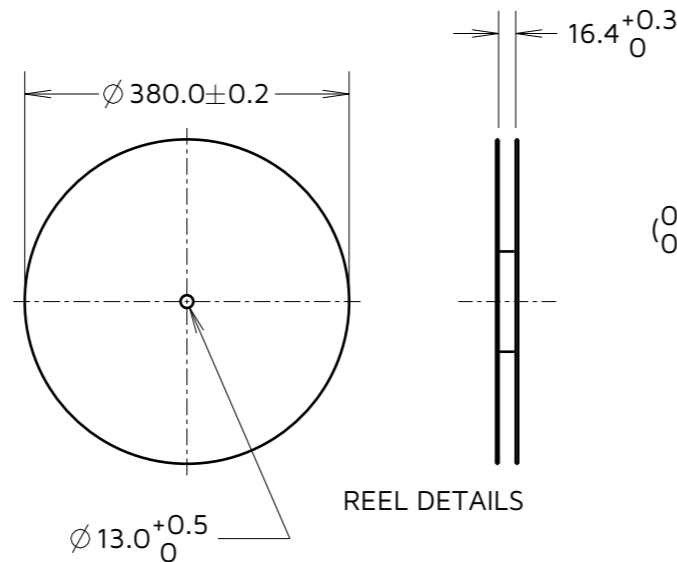
THIRD ANGLE PROJECTION

ALL DIMENSIONS IN mm

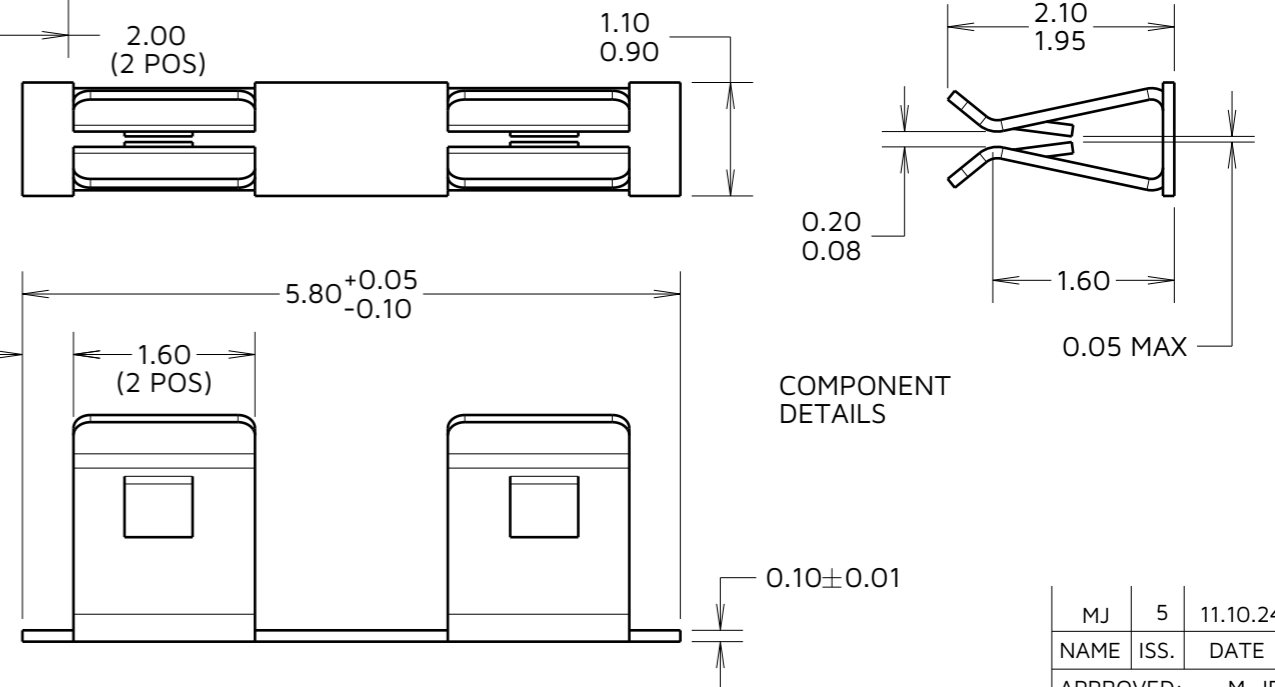
SPECIFICATION:
 MATERIAL:
 CONTACT = STAINLESS STEEL
 FINISH:
 TIN OVER NICKEL
 PACKAGING:
 5,000 PARTS IN TAPE & REEL, 9 REELS PACKED IN BOX.



FINISHED REELING DIRECTION



REEL DETAILS



COMPONENT DETAILS

MJ	5	11.10.24	34959
NAME	ISS.	DATE	CN/CO
APPROVED:		M. JELLEY	
CHECKED:		A. BOXALL	
DRAWN:		S.BENNETT	

NOTES:
 1. MAXIMUM PERMISSABLE BURR IS 0.03mm MAX.
 2. FOR USE WITH 0.20 - 0.30mm THICK SHIELD CANS.

HARWIN

www.harwin.com

TOLERANCES
 X. = ±1mm
 X.X = ±0.50mm
 X.XX = ±0.20mm
 X.XXX = ±0.01mm
 ANGLES = ±5°
 UNLESS STATED

THIS DRAWING AND ANY INFORMATION OR DESCRIPTIVE MATTER SET OUT HEREON ARE CONFIDENTIAL AND COPYRIGHT PROPERTY OF THE HARWIN GROUP AND MUST NOT BE DISCLOSED, LOANED, COPIED OR USED FOR MANUFACTURING, TENDERING OR FOR ANY OTHER PURPOSE WITHOUT THEIR WRITTEN PERMISSION.

MATERIAL:
 STAINLESS STEEL

TITLE:
 SURFACE MOUNT RFI SHIELD CLIP IN TAPE AND REEL

DRAWING NUMBER:
 S0971-46R

SHT
 2 OF 2