

Customer Information Sheet

Specification:

Material:
 Contact Shell = Brass
 Contact Clip = Beryllium Copper

Finish:
 See order code

Packing:
 Bulk

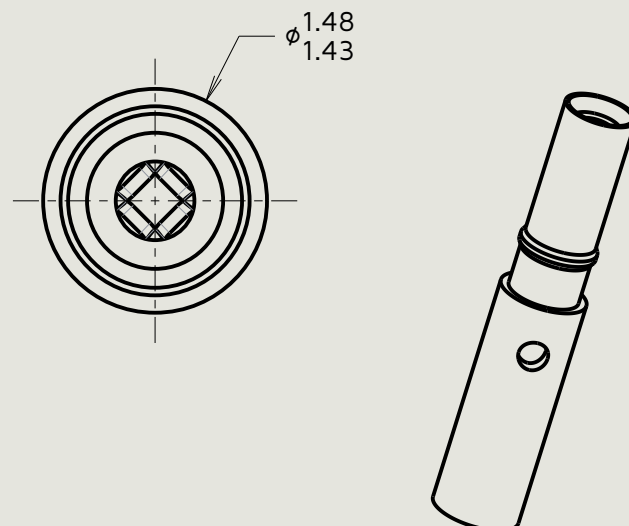
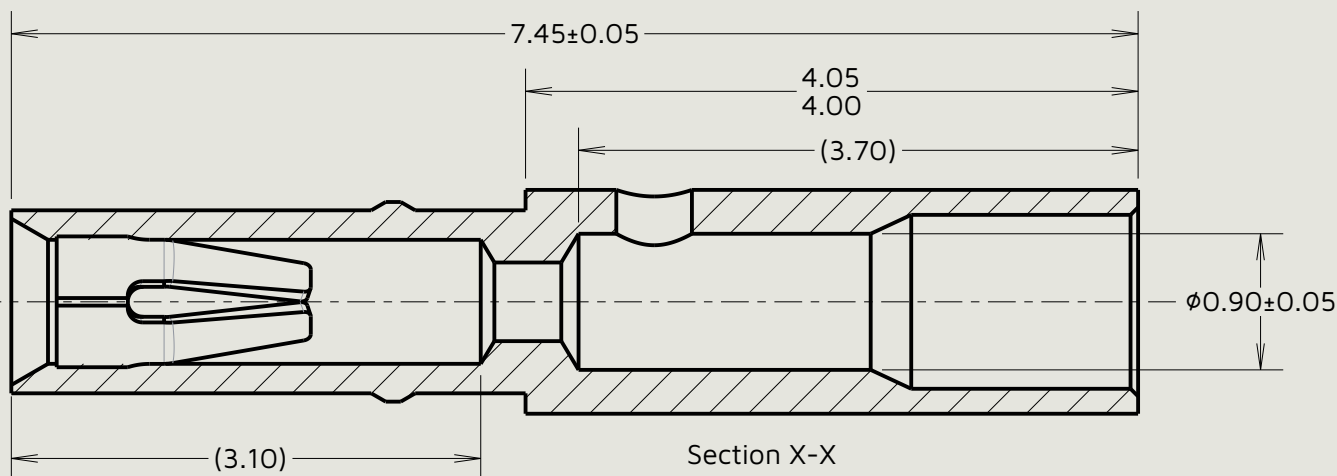
For complete connector specification, see component Specification C005XX (latest issue)

Order Code:

M80-01100XX

Finish:

01 - Gold clip, 100% Tin over Nickel shell
 05 - Gold clip, Gold shell



Scale 8:1

Notes:

- Suitable for wire gauge 22 AWG. Maximum insulation diameter ϕ 1.10mm, BS3G210 Type A wire recommended. Strip wire by 2.00mm for Crimping.
- Recommended crimp tool = M22520/2-01, positioner = T5747.
- For instructions on hand crimp tool M22520/2-01, see instruction sheet IS-01.
- Recommended mating pin size = ϕ 0.46-0.51mm.

AY	20	20.03.26	38257
Initials	Rev.	Date	CO
IS	11	11.12.91	1914



This drawing and any information or descriptive matter set out hereon are confidential and copyright property of the harwin group and must not be disclosed, loaned, copied or used for manufacturing, tendering or for any other purpose without their written permission.

TOLERANCES
 X. = \pm 0.50mm
 X.X = \pm 0.30mm
 X.XX = \pm 0.10mm
 X.XXX = \pm 0.01mm
 Angles = \pm 5°
 Unless stated

Third angle projection

 Sheet scale: 20:1
 Do not scale
 Sheet size: A4

MATERIAL:
 See above
FINISH:
 See above

Title:
 Datamate Female Crimp Socket Contact Assembly (22 AWG)
Drawing number:
M80-01100XX

SHT
 2
 OF
 2