

Customer Information Sheet

IF IN DOUBT - ASK



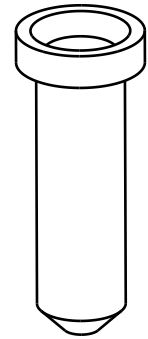
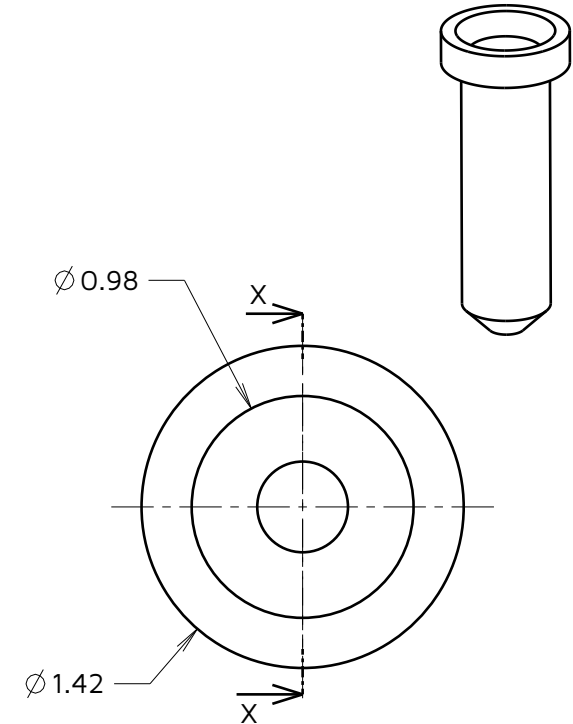
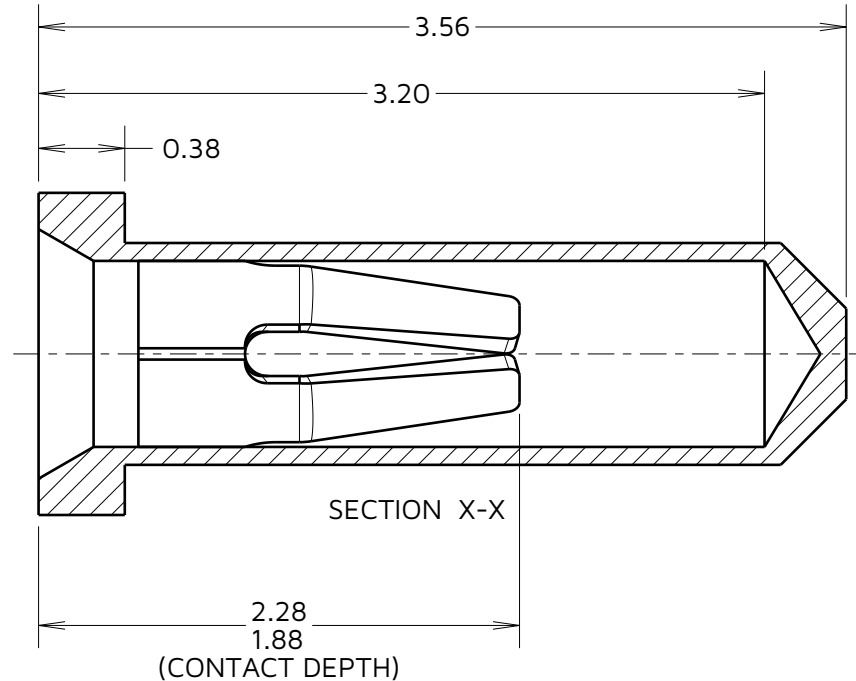
NOT TO SCALE

THIRD ANGLE PROJECTION

ALL DIMENSIONS IN mm

SPECIFICATION:

MATERIAL:
 CONTACT SHELL = BRASS
 CONTACT CLIP = BERYLLIUM COPPER
FINISH (ALL OVER NICKEL):
 SEE ORDER CODE
 FOR ELECTRICAL/MECHANICAL
 SPECIFICATION SEE COMPONENT
 SPECIFICATION C006XX (LATEST ISSUE).



NOTES:

1. RECOMMENDED MOUNTING HOLE SIZE = $\phi 1.10\text{mm} \pm 0.05$
2. RECOMMENDED PIN SIZE = $\phi 0.46 - 0.51\text{mm}$

ORDER CODE:

H3153-XX

FINISH:

- 01 = GOLD CLIP, TIN SHELL
- 05 = GOLD CLIP, GOLD SHELL
- 46 = 100% TIN CLIP, 100% TIN SHELL

AB	14	20.08.24	34124
NAME	ISS.	DATE	CN/CO
APPROVED:		A.BOXALL	
CHECKED:		R. ALEXANDER	
DRAWN:		J.CLAY	



www.harwin.com

TOLERANCES

- X. = $\pm 1\text{mm}$
- X.X = $\pm 0.50\text{mm}$
- X.XX = $\pm 0.20\text{mm}$
- X.XXX = $\pm 0.01\text{mm}$
- ANGLES = $\pm 5^\circ$
- UNLESS STATED

THIS DRAWING AND ANY INFORMATION OR DESCRIPTIVE MATTER SET OUT HEREON ARE CONFIDENTIAL AND COPYRIGHT PROPERTY OF THE HARWIN GROUP AND MUST NOT BE DISCLOSED, LOANED, COPIED OR USED FOR MANUFACTURING, TENDERING OR FOR ANY OTHER PURPOSE WITHOUT THEIR WRITTEN PERMISSION.

MATERIAL & FINISH:

SEE ABOVE

TITLE:

**SUB-MINIATURE
 SOCKET ASSEMBLY**

DRAWING NUMBER:

H3153-XX

SHT
 2
 OF 2