

Customer Information Sheet

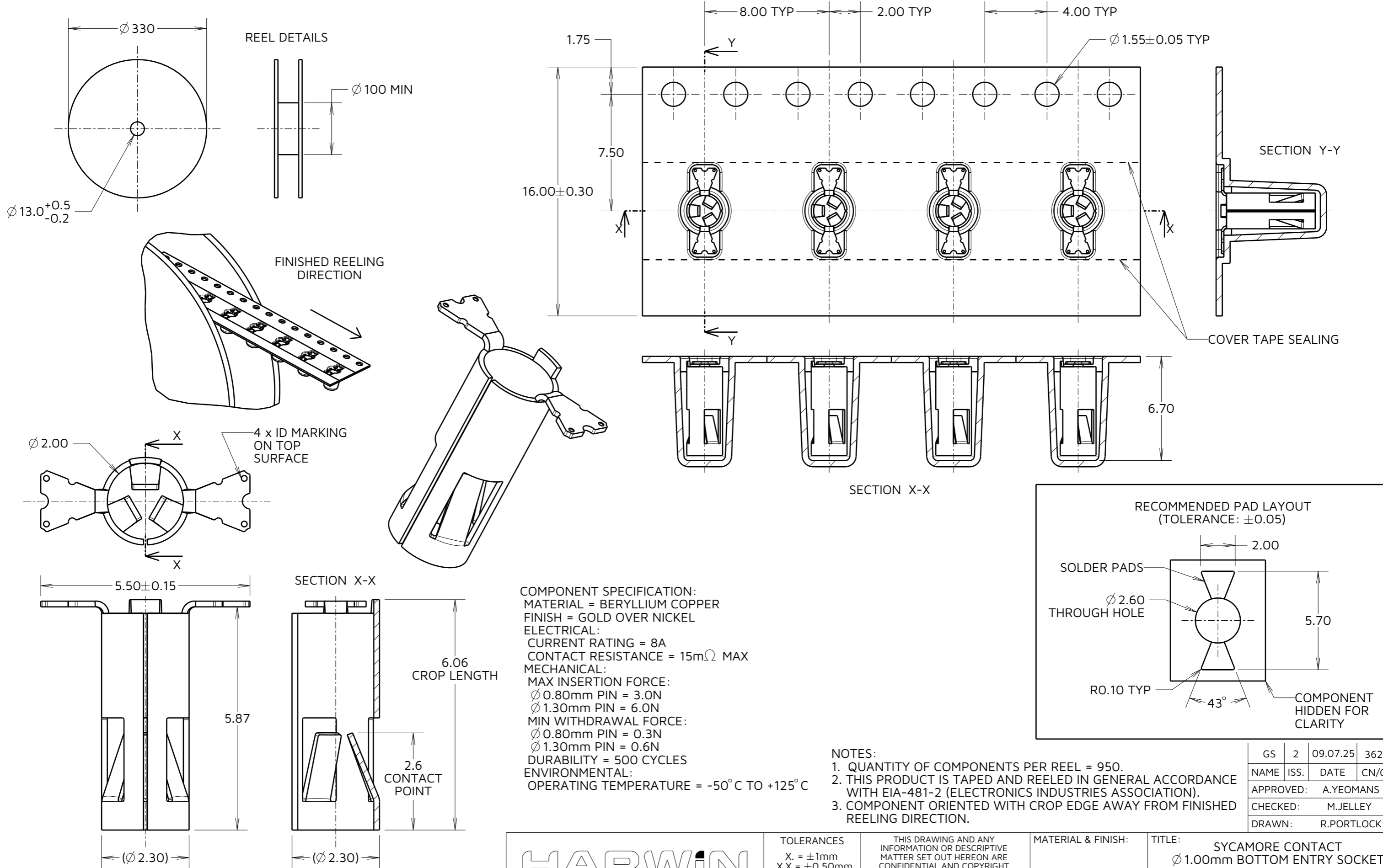
IF IN DOUBT - ASK

©

NOT TO SCALE

THIRD ANGLE PROJECTION

ALL DIMENSIONS IN mm



COMPONENT SPECIFICATION:
 MATERIAL = BERYLLIUM COPPER
 FINISH = GOLD OVER NICKEL
 ELECTRICAL:
 CURRENT RATING = 8A
 CONTACT RESISTANCE = 15mΩ MAX
 MECHANICAL:
 MAX INSERTION FORCE:
 Ø 0.80mm PIN = 3.0N
 Ø 1.30mm PIN = 6.0N
 MIN WITHDRAWAL FORCE:
 Ø 0.80mm PIN = 0.3N
 Ø 1.30mm PIN = 0.6N
 DURABILITY = 500 CYCLES
 ENVIRONMENTAL:
 OPERATING TEMPERATURE = -50°C TO +125°C

- NOTES:**
- QUANTITY OF COMPONENTS PER REEL = 950.
 - THIS PRODUCT IS TAPED AND REELED IN GENERAL ACCORDANCE WITH EIA-481-2 (ELECTRONICS INDUSTRIES ASSOCIATION).
 - COMPONENT ORIENTED WITH CROP EDGE AWAY FROM FINISHED REELING DIRECTION.

GS	2	09.07.25	36234
NAME	ISS.	DATE	CN/CO
APPROVED:		A.YEOMANS	
CHECKED:		M.JELLEY	
DRAWN:		R.PORTLOCK	

HARWIN
 www.harwin.com

TOLERANCES
 X. = ±1mm
 X.X = ±0.50mm
 X.XX = ±0.20mm
 X.XXX = ±0.01mm
 ANGLES = ±5°
 UNLESS STATED

THIS DRAWING AND ANY INFORMATION OR DESCRIPTIVE MATTER SET OUT HEREON ARE CONFIDENTIAL AND COPYRIGHT PROPERTY OF THE HARWIN GROUP AND MUST NOT BE DISCLOSED, LOANED, COPIED OR USED FOR MANUFACTURING, TENDERING OR FOR ANY OTHER PURPOSE WITHOUT THEIR WRITTEN PERMISSION.

MATERIAL & FINISH:
 SEE ABOVE

TITLE:
 SYCAMORE CONTACT
 Ø 1.00mm BOTTOM ENTRY SOCKET
 IN TAPE & REEL - 5.87mm

DRAWING NUMBER:
 S9341-45R

SHT 2 OF 2