

HARWIN

CONNECT TECHNOLOGY
WITH CONFIDENCE

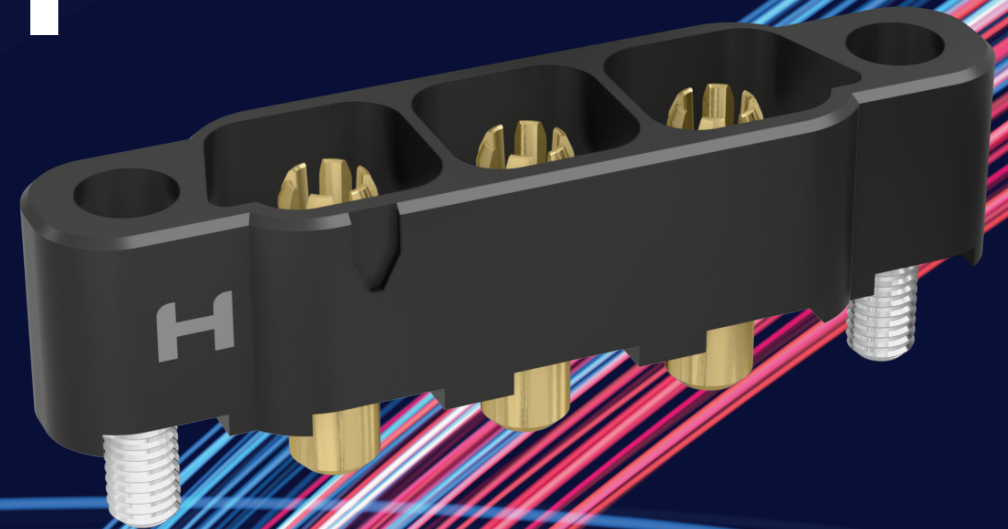
 KONA[®]

HIGH RELIABILITY HIGH CURRENT

MAXIMUM POWER CONNECTORS



HRI
RANGE



HARWIN



HRI CONNECTORS FROM HARWIN.

MAXIMUM POWER CONNECTIONS FOR SWAP-C OPTIMIZATION

For applications that must not fail, Kona brings high-reliability power connection at 8.50mm pitch. High current with robust housings; tough and lightweight performance under shock/vibration and temperature.

Kona contacts are fully and individually shrouded, with built-in polarization for maximum protection and minimal damage due to handling or mis-mating.

Cable-to-board and cable-to-cable; pin counts of 2, 3 and 4 at 60A per contact, for a combined power level of 240A. Maximum voltage rating of 3,000V delivered by 6-finger Beryllium copper alloy contacts. Connection integrity and good spring force achieves electrical connectivity in a variety of harsh environments.

Fit 8 AWG cable with silicone insulation, solder or crimp to straight or right-angle contacts before assembly to the

housings. Gold plating resists wear from continued use, or long-life durability in mate-and-forget operations.

Stainless steel screw-lock fixings with mate-before lock are available in both standard or reverse-fix configurations, with panel and board mount for additional security.

Cable assembly options are available from our in-house cabling experts, ready for your prototyping or production line needs.

FEATURES

- Quick mating screw fixings for reliable proven connections
- High power connection under extreme environments – vibration, shock and temperature resistance
- Low outgassing, great for space, avionics and optronics

APPLICATIONS

- Aviation and UAVs
- New Space
- Motorsport, EVs
- Defense & Security
- High-end Industrial





SPECIFICATIONS

MATERIALS	ELECTRICAL	MECHANICAL	ENVIRONMENTAL
Housings: Glass-Filled High Temperature Thermoplastic, UL94V-0	Current per contact: 60A max	Durability: 250 mating cycles	Operating temperature: -65°C to +150°C
Contacts: Copper Alloy, Gold Plating	Working voltage: 1,500V AC/DC	Insertion force (per contact): 70N max	Humidity: 90-95% RH at +40°C for 96 hours
	Maximum voltage: 3,000V AC		Vibration resistance: 20G (196m/s²) for 12 hrs
Screw-loks: Stainless Steel	Contact resistance: 2mΩ max	Withdrawal force (per contact): 3N min	Shock resistance: 100G (981m/s²)
		Contact retention in housing: 35N min	Outgassing: 0.05%TML, 0.00% CVCM
Metal Backshells: Aluminium Alloy	Insulation resistance: 10GΩ min	Pitch: 8.50mm	Compliance: RoHS Compliant REACH / CMRT statements

Specifications are subject to change.





PRODUCT CATEGORIES

CABLE CONNECTOR PARTS

Male plug and female receptacle cable housings and contacts available separately. Options for either straight or right-angle cable exit, to suit any layout requirement. Jackscrews are supplied assembled to the housings. Standard gender and reverse fix options.



CABLE ASSEMBLIES

Ready-to-use cabled connectors, single or double ended, fully inspected and tested. Ideal for both prototyping and full production requirements.



TOOLING & ACCESSORIES

Associated products and tooling to support the Kona range.



Specifications are subject to change.



VIEW FULL SERIES & SPECIFICATIONS [HERE](#)

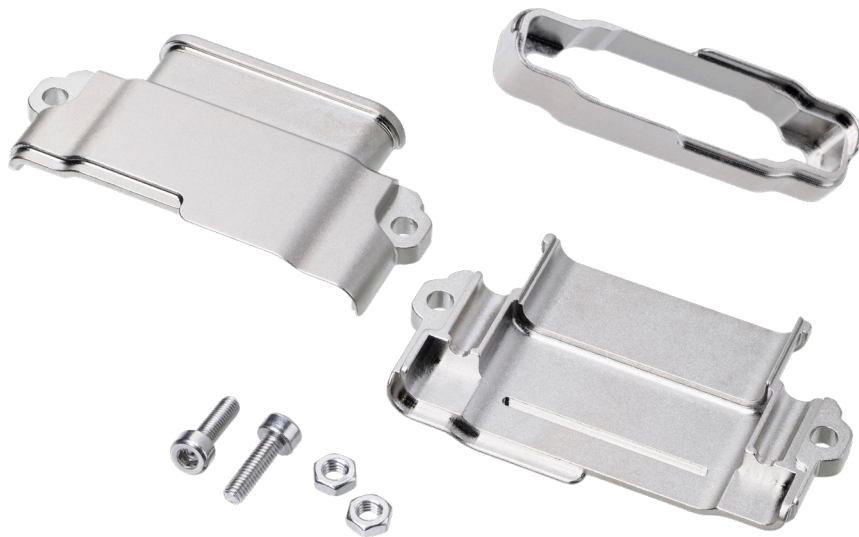




PRODUCT CATEGORIES

BACKSHELLS

Lightweight aluminium alloy backshells for cable, panel and PCB mounting. EMC shielding with metal braid and micro-band fixing, available as separate components or as completed ready-made cable assemblies. Robust hoods for long-term physical protection.



Specifications are subject to change.



PCB CONNECTORS

Male plug board-mounted connectors with board mount or reverse fix screws. Straight and right-angle orientations. Board mount nuts available separately.



VIEW FULL SERIES & SPECIFICATIONS [HERE](#)





DOWNLOADS

TECHNICAL DOCUMENTS

Component Specification (including pin numbering system)



PRODUCT TRAINING

Product Training Module (PTM)



TEST REPORTS

HT076 – Kona General Testing



Specifications are subject to change.



VIEW FULL SERIES & SPECIFICATIONS **HERE**



HARWIN

CONNECT TECHNOLOGY
WITH CONFIDENCE



HRI
RANGE



BBI
RANGE



EZI
RANGE

FOR FURTHER INFORMATION PLEASE CONTACT:

SUPPORT@HARWIN.COM

WWW.HARWIN.COM