

Customer Information Sheet

IF IN DOUBT - ASK

©

NOT TO SCALE

THIRD ANGLE PROJECTION

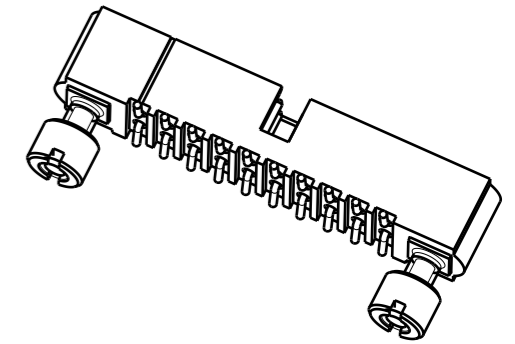
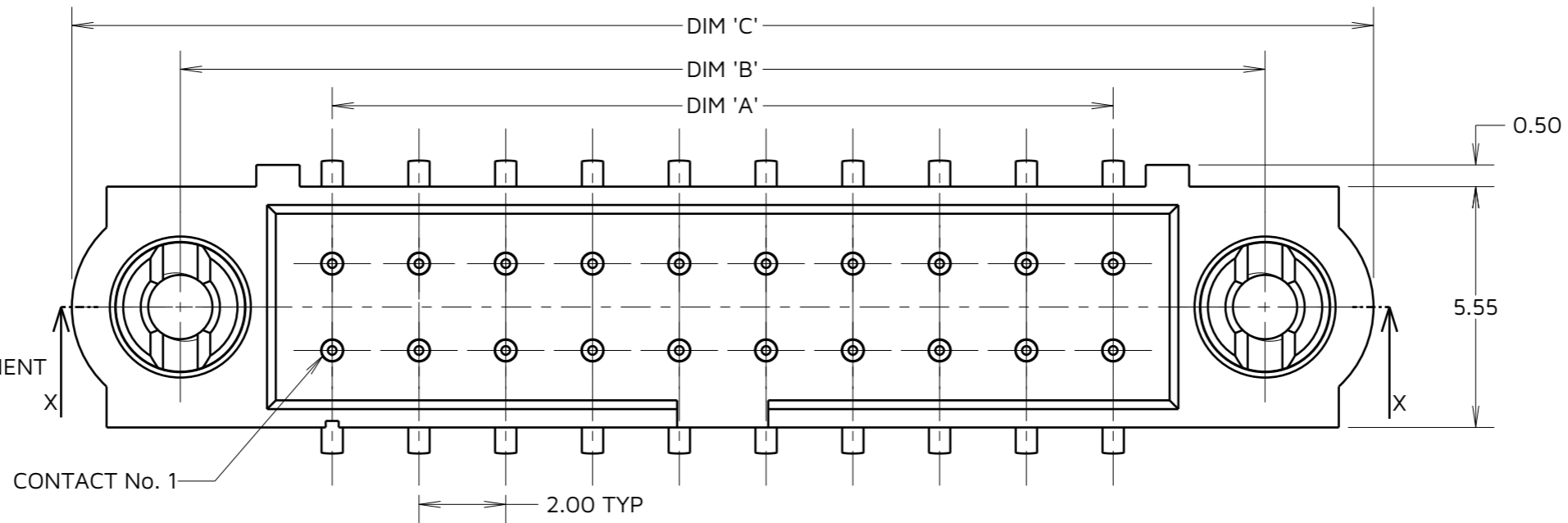
ALL DIMENSIONS IN mm

SPECIFICATIONS:

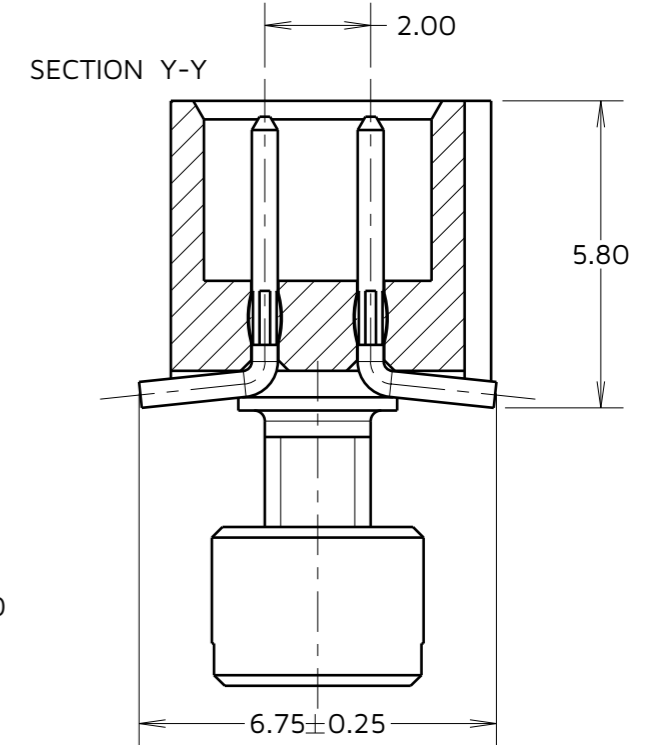
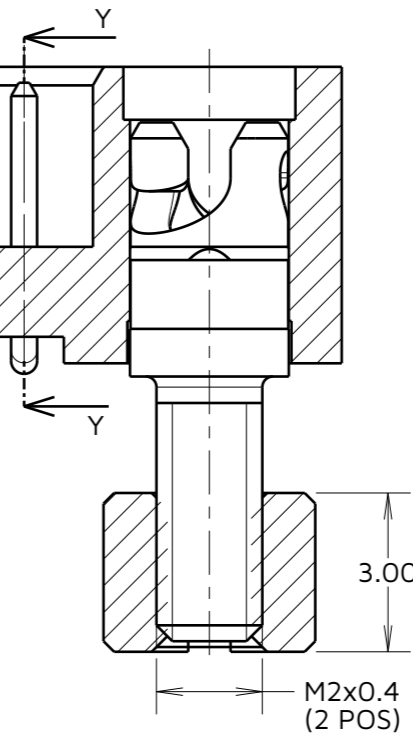
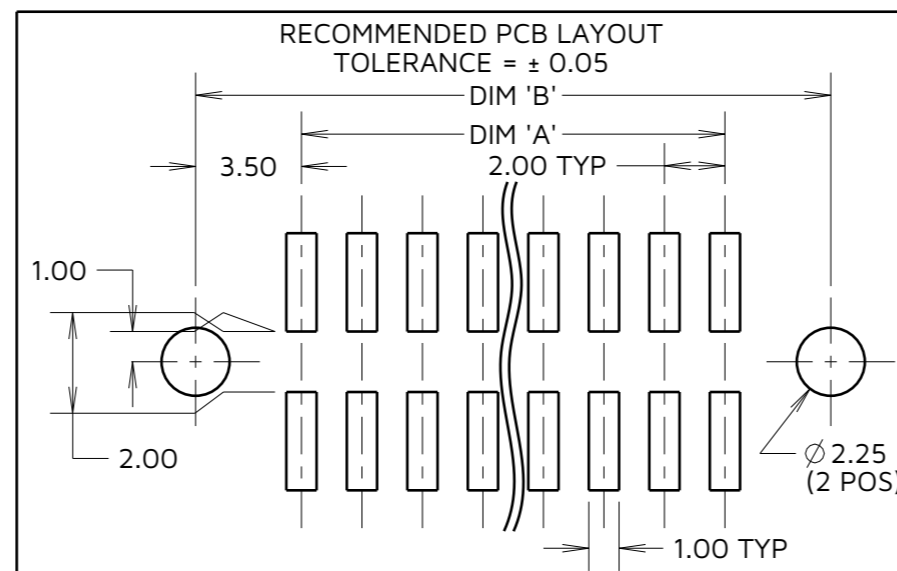
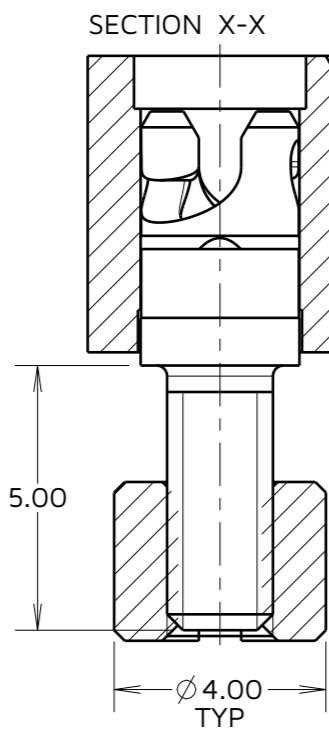
MATERIAL:
 HOUSING = GLASS-FILLED PPS,
 UL94V-0, BLACK
 CONTACT = PHOSPHOR BRONZE
 JACKSCREW = STAINLESS STEEL

FINISH (CONTACTS):
 NICKEL ALL OVER CONTACTS
 05 = GOLD ALL OVER
 22 = GOLD ON CONTACT AREA,
 TIN/LEAD ON TAILS
 42 = GOLD ON CONTACT AREA,
 100% TIN ON TAILS

PACKING:
 TUBE
 FOR COMPLETE SPECIFICATION, SEE COMPONENT
 SPECIFICATION C005XX (LATEST ISSUE)



PART No.	WEIGHT (g)
M80-5S114XXME	1.86
M80-5S112XXME	1.79
M80-5S110XXME	1.72
M80-5S116XXME	1.93
M80-5S118XXME	2.00
M80-5S120XXME	2.06
M80-5S122XXME	2.13
M80-5S124XXME	2.20
M80-5S126XXME	2.27
M80-5S128XXME	2.34
M80-5S130XXME	2.40
M80-5S132XXME	2.47
M80-5S134XXME	2.54
M80-5S136XXME	2.61
M80-5S138XXME	2.68
M80-5S140XXME	2.74
M80-5S142XXME	2.81
M80-5S144XXME	2.88
M80-5S146XXME	2.95
M80-5S148XXME	3.02
M80-5S150XXME	3.08



DIMENSION	CALCULATION
DIM 'A'	TOTAL No. OF CONTACTS - 2.00
DIM 'B'	TOTAL No. OF CONTACTS + 5.00
DIM 'C'	TOTAL No. OF CONTACTS + 10.0

EXAMPLE ORDER CODE 1: CONNECTOR WITH 20 CONTACTS
 M80-5S120XXME
 DIM 'A' = 18.00mm, DIM 'B' = 25.00mm, DIM 'C' = 30.00mm

ORDER CODE:
M80-5S1XXXXME
 TOTAL No. OF CONTACTS
 04 TO 50
 (EVEN NUMBERS ONLY)
FINISH CODE
 05 - GOLD
 22 - GOLD ON CONTACT AREA / TIN/LEAD ON TAIL
 42 - GOLD ON CONTACT AREA / 100% TIN ON TAIL

MJ	5	19.12.24	35293
NAME	ISS.	DATE	CN/CO
APPROVED:	M. JELLEY		
CHECKED:	R. ALEXANDER		
DRAWN:	S. MCCULLAGH		

NOTES:
 1. M80-5S120XXME IS SHOWN FOR ILLUSTRATION PURPOSES, SEE ORDER CODE FOR VARIANTS

HARWIN

www.harwin.com

TOLERANCES
 X. = ±1mm
 X.X = ±0.50mm
 X.XX = ±0.20mm
 X.XXX = ±0.01mm
 ANGLES = ±5°
 UNLESS STATED

THIS DRAWING AND ANY INFORMATION OR DESCRIPTIVE MATTER SET OUT HEREON ARE CONFIDENTIAL AND COPYRIGHT PROPERTY OF THE HARWIN GROUP AND MUST NOT BE DISCLOSED, LOANED, COPIED OR USED FOR MANUFACTURING, TENDERING OR FOR ANY OTHER PURPOSE WITHOUT THEIR WRITTEN PERMISSION.

MATERIAL & FINISH:
 SEE ABOVE

TITLE: DATAMATE J-TEK DIL
 VERT SMT MALE
 ASSY WITH 101LOK RETAINERS
DRAWING NUMBER:
 M80-5S1XXXXME

SHT
 2 OF 2