

Customer Information Sheet

IF IN DOUBT - ASK

©

NOT TO SCALE

THIRD ANGLE PROJECTION

ALL DIMENSIONS IN mm

SPECIFICATIONS:
MATERIAL:
 HOUSING = GLASS-FILLED PPS,
 UL94V-0, BLACK
 CONTACT = PHOSPHOR BRONZE
FINISH (CONTACTS):
 NICKEL ALL OVER CONTACTS
 05 = ALL OVER GOLD
 22 = GOLD ON CONTACT AREA,
 TIN/LEAD ON TAILS
 42 = GOLD ON CONTACT AREA,
 100% TIN ON TAILS
PACKING:
 TUBE
 FOR COMPLETE SPECIFICATION, SEE
 COMPONENT SPECIFICATION C005XX
 (LATEST ISSUE)

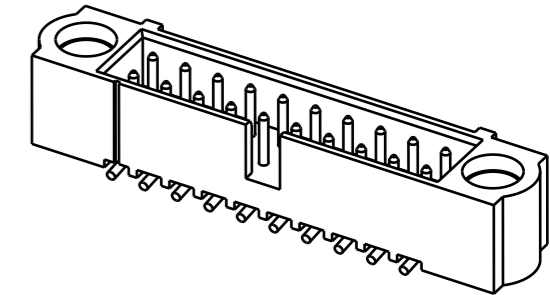
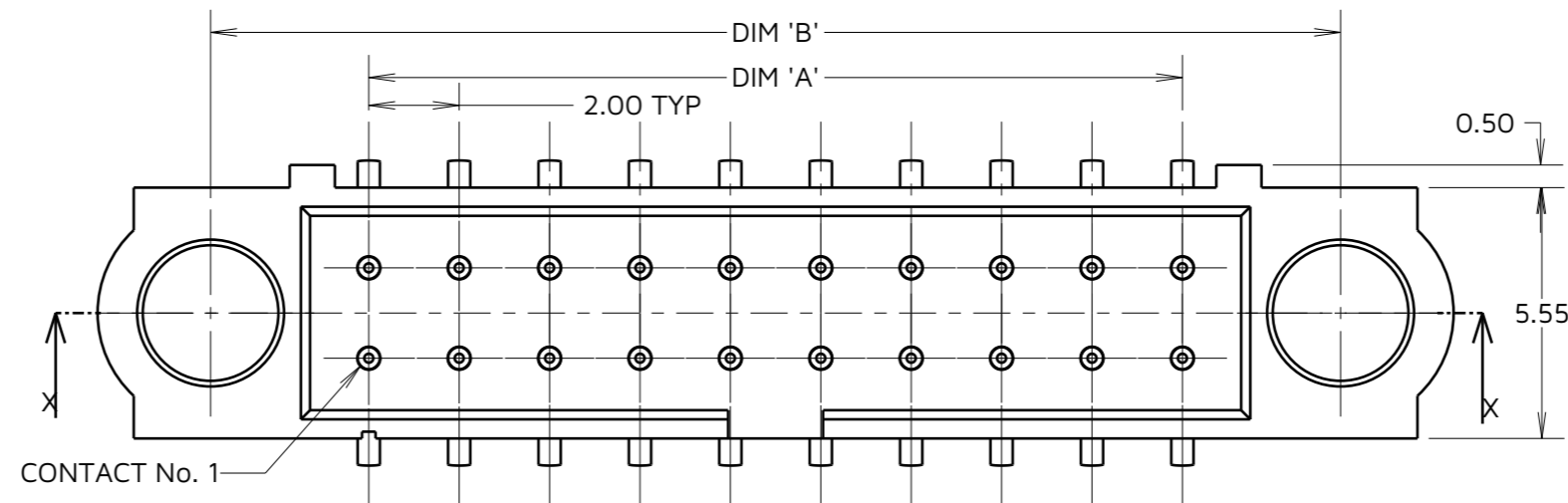


TABLE 2: WEIGHTS

PART No.	WEIGHT (g)
M80-52204XX	0.43
M80-52206XX	0.50
M80-52208XX	0.57
M80-52210XX	0.64
M80-52212XX	0.70
M80-52214XX	0.77
M80-52218XX	0.91
M80-52220XX	0.98
M80-52222XX	1.04
M80-52224XX	1.11
M80-52226XX	1.18
M80-52228XX	1.25
M80-52230XX	1.32
M80-52232XX	1.38
M80-52234XX	1.45
M80-52236XX	1.52
M80-52238XX	1.59
M80-52240XX	1.66
M80-52242XX	1.72
M80-52244XX	1.79
M80-52246XX	1.86
M80-52248XX	1.93
M80-52250XX	2.00

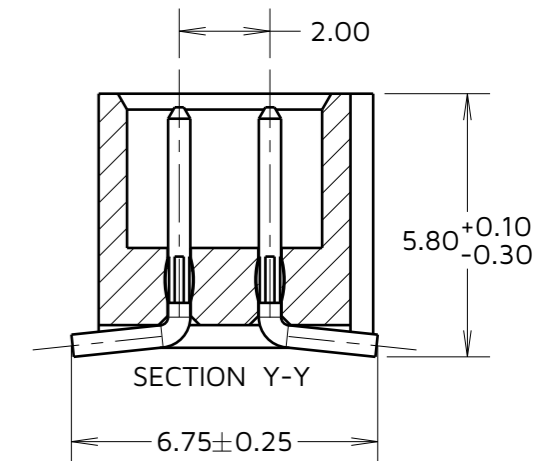
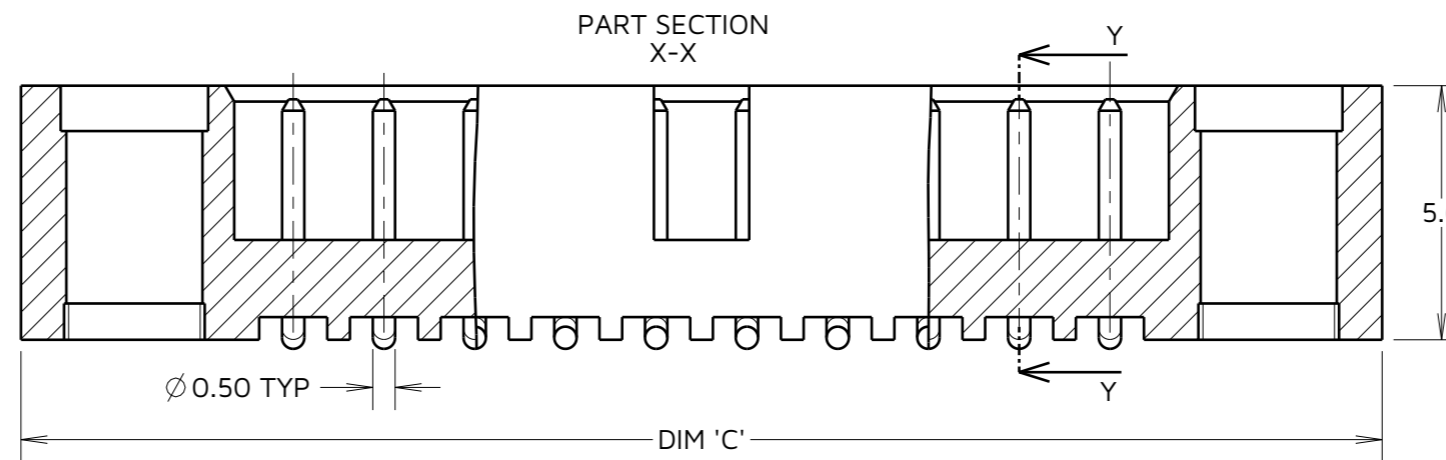


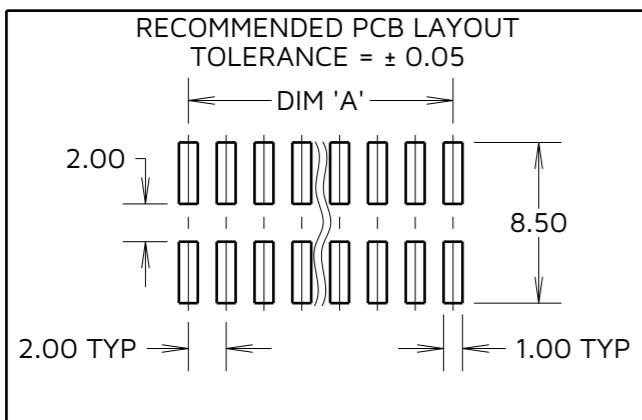
TABLE 1: DIMENSION VARIANTS

DIMENSION	CALCULATION
DIM 'A'	TOTAL No. OF CONTACTS - 2.00
DIM 'B'	TOTAL No. OF CONTACTS + 5.00
DIM 'C'	TOTAL No. OF CONTACTS + 10.0

EXAMPLE: CONNECTOR WITH 20 CONTACTS,
 M80-52220XX
 DIM 'A' = 18.00mm, DIM 'B' = 25.00mm, DIM 'C' = 30.00mm

ORDER CODE:
M80-522XXXX
 TOTAL No. OF CONTACTS
 04 TO 50
 (EVEN NUMBERS ONLY)
 FINISH CODE _____
 05 - ALL OVER GOLD
 22 - GOLD ON CONTACT AREA / TIN/LEAD ON TAIL
 42 - GOLD ON CONTACT AREA / 100% TIN ON TAIL

MJ	7	02.12.25	35293
NAME	ISS.	DATE	CN/CO
APPROVED:		M. JELLEY	
CHECKED:		R. ALEXANDER	
DRAWN:		B. M. KENT	



NOTES:
 1. M80-52220XX IS SHOWN FOR ILLUSTRATION PURPOSES, SEE ORDER CODE FOR VARIANTS.

HARWIN

www.harwin.com

TOLERANCES
 X. = ±1mm
 X.X = ±0.50mm
 X.XX = ±0.20mm
 X.XXX = ±0.01mm
 ANGLES = ±5°
 UNLESS STATED

THIS DRAWING AND ANY INFORMATION OR DESCRIPTIVE MATTER SET OUT HEREON ARE CONFIDENTIAL AND COPYRIGHT PROPERTY OF THE HARWIN GROUP AND MUST NOT BE DISCLOSED, LOANED, COPIED OR USED FOR MANUFACTURING, TENDERING OR FOR ANY OTHER PURPOSE WITHOUT THEIR WRITTEN PERMISSION.

MATERIAL & FINISH:
 SEE ABOVE

TITLE: JACKSCREW DATAMATE
 DIL VERTICAL SMT
 MALE ASSEMBLY (NO J/S)

DRAWING NUMBER:
M80-522XXXX

SHT
 2 OF 2