

# Customer Information Sheet

IF IN DOUBT - ASK



NOT TO SCALE

THIRD ANGLE PROJECTION

ALL DIMENSIONS IN mm

**SPECIFICATION:**

**MATERIAL:**

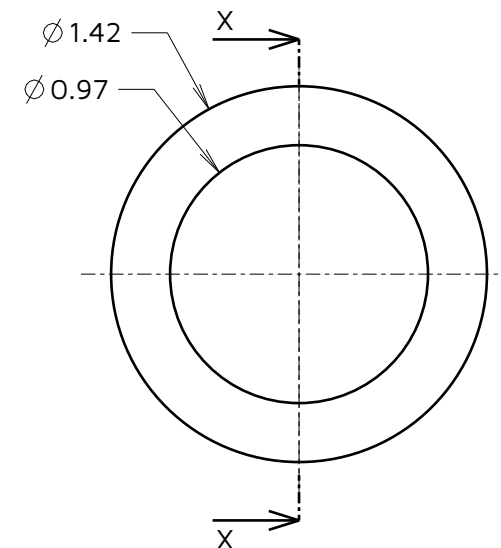
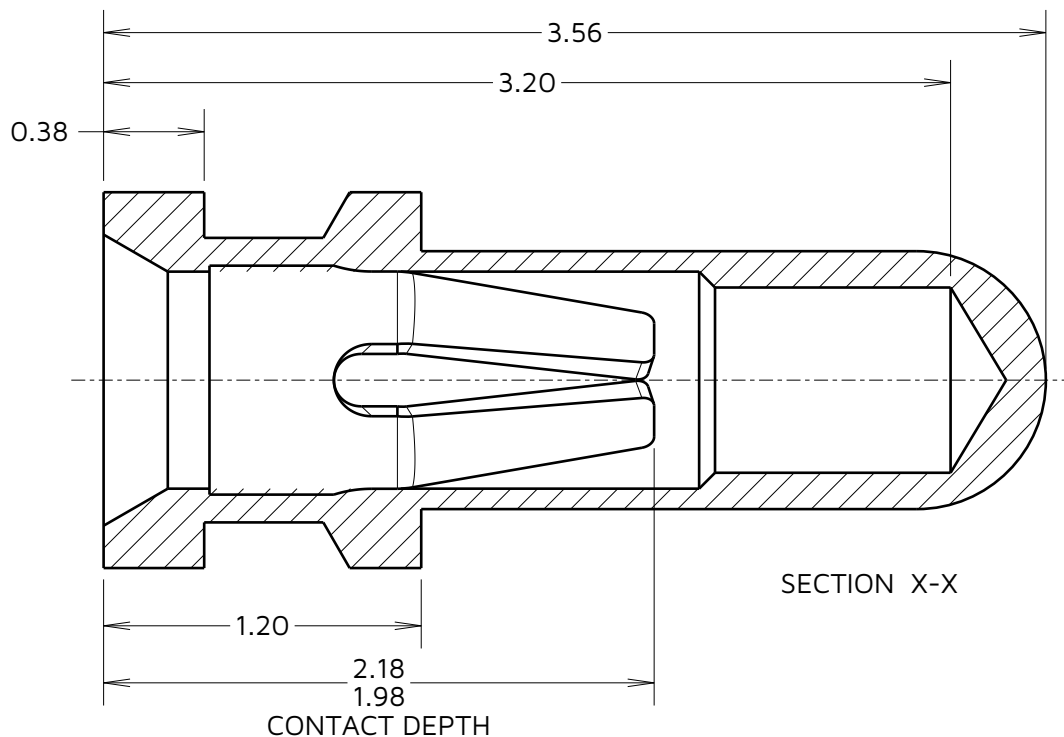
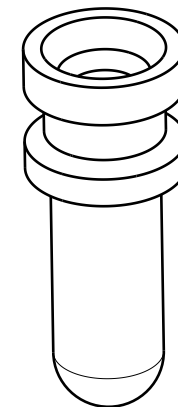
CONTACT SHELL = BRASS

CONTACT CLIP = BERYLLIUM COPPER

**FINISH:**

SEE ORDER CODE

FOR COMPLETE SPECIFICATION, SEE COMPONENT SPECIFICATION C006XX (LATEST ISSUE)



ORDER CODE:  
**H3155-XX**

FINISH: \_\_\_\_\_

01 = GOLD CLIP, TIN SHELL  
05 = GOLD CLIP, GOLD SHELL  
46 = 100% TIN CLIP, TIN SHELL

MJ	12	02.07.24	34124
NAME	ISS.	DATE	CN/CO
APPROVED:		M. JELLEY	
CHECKED:		R. PORTLOCK	
DRAWN:		M.PERREN	

**NOTES:**

1. RECOMMENDED MOUNTING HOLE SIZE =  $\phi 1.10 \pm 0.05 \text{mm}$
2. RECOMMENDED PIN SIZE =  $\phi 0.49$  TO  $0.51 \text{mm}$ .



www.harwin.com

**TOLERANCES**

- X. =  $\pm 1 \text{mm}$
- X.X =  $\pm 0.50 \text{mm}$
- X.XX =  $\pm 0.20 \text{mm}$
- X.XXX =  $\pm 0.01 \text{mm}$
- ANGLES =  $\pm 5^\circ$
- UNLESS STATED

THIS DRAWING AND ANY INFORMATION OR DESCRIPTIVE MATTER SET OUT HEREON ARE CONFIDENTIAL AND COPYRIGHT PROPERTY OF THE HARWIN GROUP AND MUST NOT BE DISCLOSED, LOANED, COPIED OR USED FOR MANUFACTURING, TENDERING OR FOR ANY OTHER PURPOSE WITHOUT THEIR WRITTEN PERMISSION.

**MATERIAL & FINISH:**

SEE ABOVE

**TITLE:**

**SUB-MINATURE SOCKET ASSEMBLY**

**DRAWING NUMBER:**

**H3155-XX**

SHT  
2  
OF  
2