

Customer Information Sheet

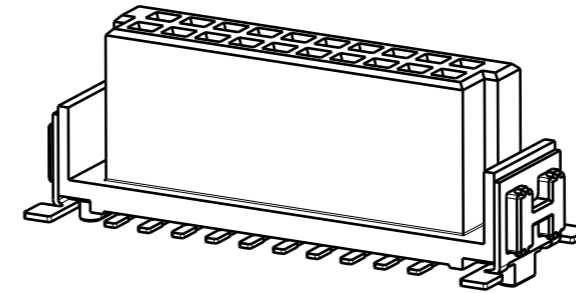
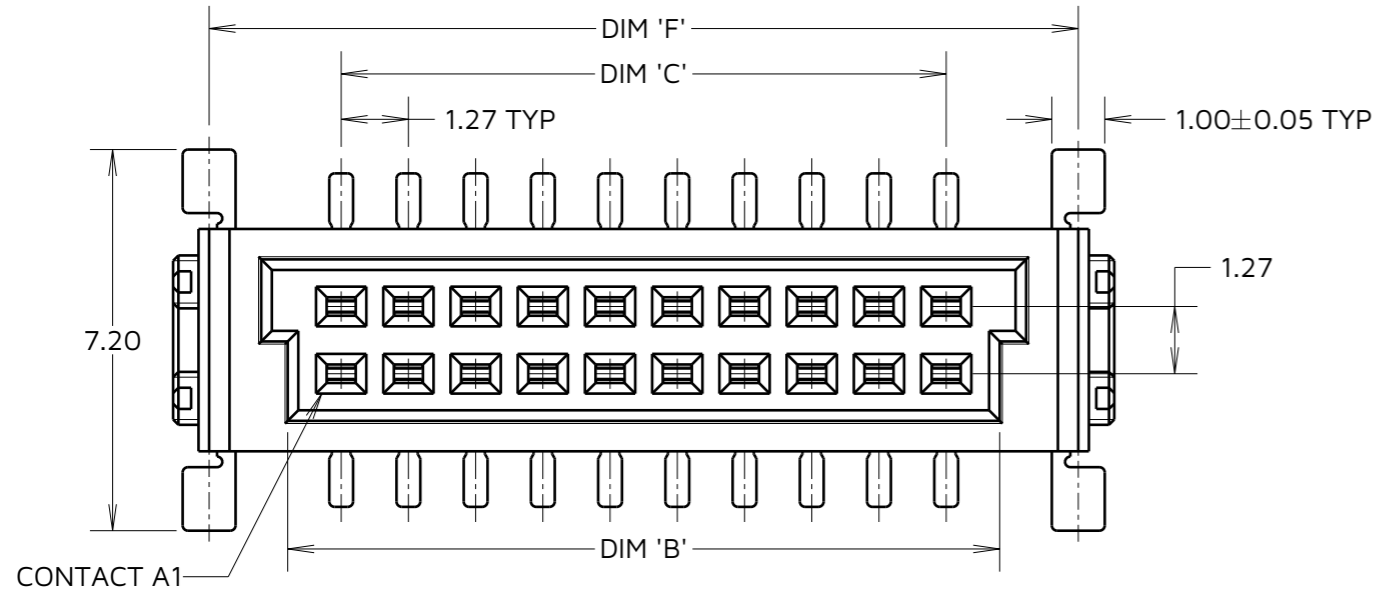
IF IN DOUBT - ASK

©

NOT TO SCALE

THIRD ANGLE PROJECTION

ALL DIMENSIONS IN mm



CAP HAS BEEN HIDDEN FOR ILLUSTRATION PURPOSES ONLY. SEE NOTE 1

SPECIFICATIONS:
MATERIAL:
 MOULDING & CAP = HIGH TEMP, LCP, UL94V-0
 CONTACT = PHOSPHOR BRONZE
 RETAINING STRAP = BRASS
PLATING:
 CONTACT = GOLD OVER NICKEL ON CONTACT AREA, TIN OVER NICKEL ON TAILS
 RETAINING STRAP = TIN OVER NICKEL
PACKING:
 TAPE & REEL

FOR COMPLETE SPECIFICATION, SEE COMPONENT SPECIFICATION C047XX (LATEST ISSUE)

ORDER CODE: **M55-60XXX42R**

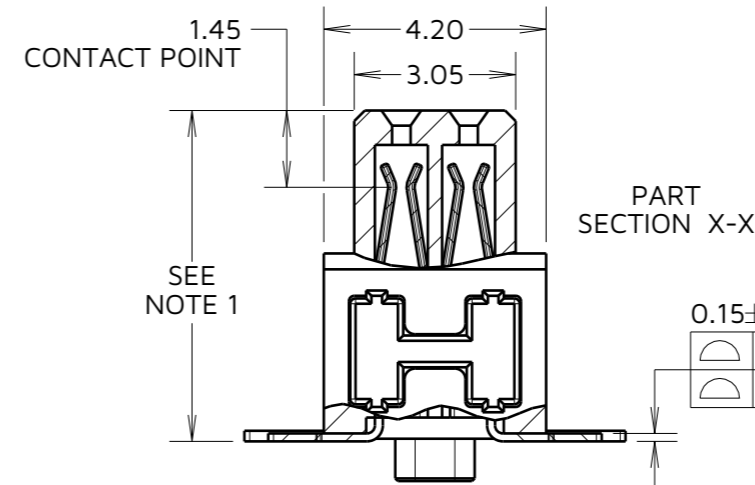
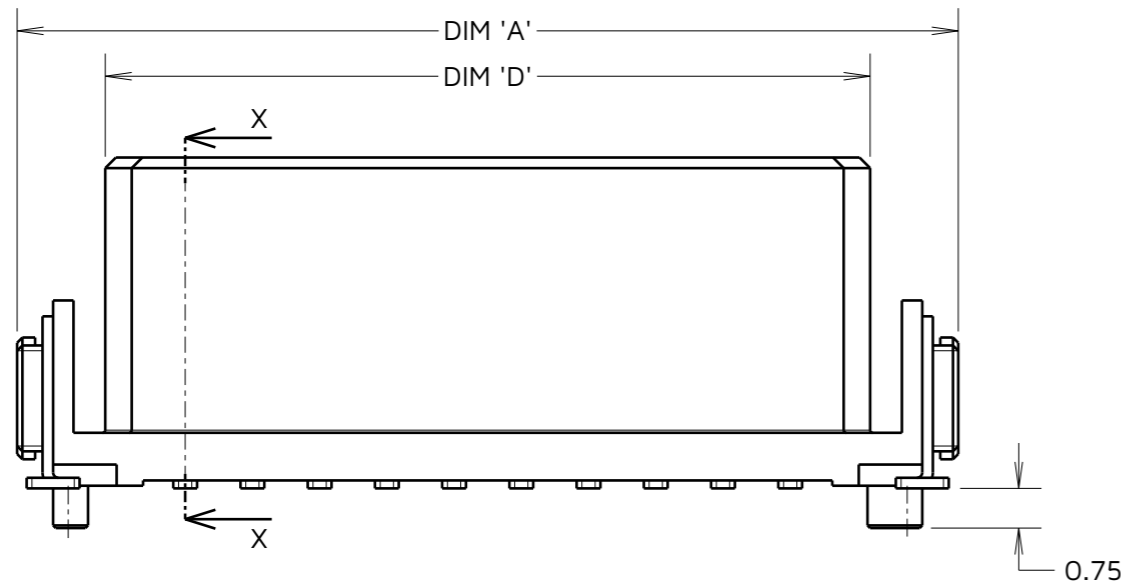
CONNECTOR HEIGHT: _____

SMT HARDWARE:
 0 = 6.25mm
 1 = 9.05mm
 2 = 13.65mm

THR HARDWARE:
 5 = 6.25mm
 6 = 9.05mm
 7 = 13.65mm

TOTAL No. OF CONTACTS: _____

12, 16, 20, 26,
 32, 40, 50, 68, 80



0.15±0.02	0.1	12 - 50 CONTACTS
0.15	0.15	68 - 80 CONTACTS

SHEETS 7 to 10:
 M55-600XX42R
 M55-601XX42R
 M55-602XX42R

SHEETS 11 to 14:
 M55-605XX42R
 M55-606XX42R
 M55-607XX42R

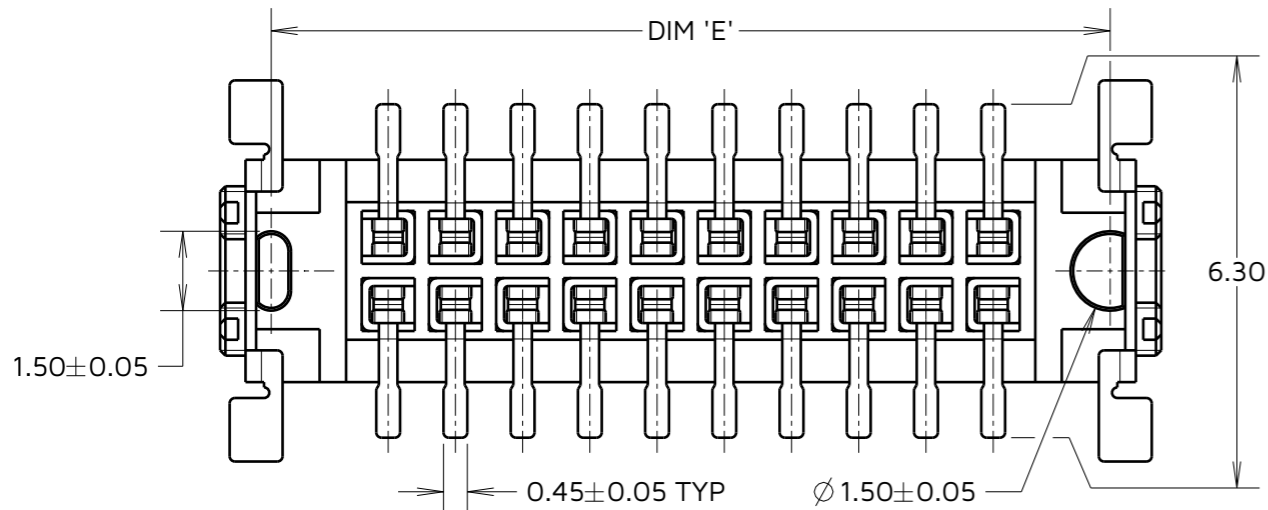


TABLE 1: CONNECTOR DIMENSIONS (X = 0, 1, 2)

PART No.	DIM 'A'	DIM 'B'	DIM 'C'	DIM 'D'	DIM 'E'	DIM 'F'
M55-60X1242R	12.70	8.37	6.35	9.37	10.77	11.34
M55-60X1642R	15.24	10.91	8.89	11.91	13.31	13.88
M55-60X2042R	17.78	13.45	11.43	14.45	15.85	16.42
M55-60X2642R	21.59	17.26	15.24	18.26	19.66	20.23
M55-60X3242R	25.40	21.07	19.05	22.07	23.47	24.04
M55-60X4042R	30.48	26.15	24.13	27.15	28.55	29.12
M55-60X5042R	36.83	32.50	30.48	33.50	34.90	35.47
M55-60X6842R	48.26	43.93	41.91	44.93	46.33	46.90
M55-60X8042R	55.88	51.55	49.53	52.55	53.95	54.52

RA	11	16.02.26	37864
NAME	ISS.	DATE	CN/CO
APPROVED: R.ALEXANDER			
CHECKED: J.WALKER			
DRAWN: M.PERREN			

- NOTES:
- SEE ORDER CODE AND SHEET 8 FOR CONNECTOR HEIGHT AND CAP DETAILS. SEE SHEET 10 FOR RECOMMENDED PCB LAYOUTS.
 - FOR TAPE AND REEL DETAILS, SEE SHEET 9.
 - ALL TOLERANCES ARE ±0.20, UNLESS OTHERWISE STATED.
 - FOR COMPLETE SPECIFICATION SEE COMPONENT SPECIFICATION C047XX (LATEST ISSUE).

HARWIN

www.harwin.com

TOLERANCES
 X = ±1mm
 X.X = ±0.50mm
 X.XX = ±0.20mm
 X.XXX = ±0.01mm
 ANGLES = ±5°
 UNLESS STATED

THIS DRAWING AND ANY INFORMATION OR DESCRIPTIVE MATTER SET OUT HEREON ARE CONFIDENTIAL AND COPYRIGHT PROPERTY OF THE HARWIN GROUP AND MUST NOT BE DISCLOSED, LOANED, COPIED OR USED FOR MANUFACTURING, TENDERING OR FOR ANY OTHER PURPOSE WITHOUT THEIR WRITTEN PERMISSION.

MATERIAL & FINISH:
 SEE ABOVE

TITLE:
 1.27mm PITCH VERTICAL FEMALE CONNECTOR

DRAWING NUMBER:
 M55-600XX42R to M55-602XX42R

SHT 7 OF 14

Customer Information Sheet

IF IN DOUBT - ASK

©

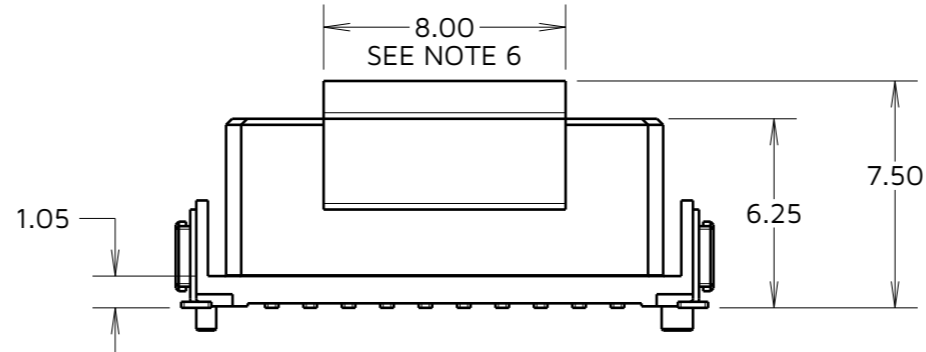
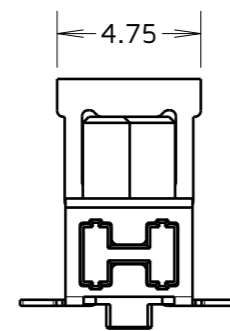
NOT TO SCALE

THIRD ANGLE PROJECTION

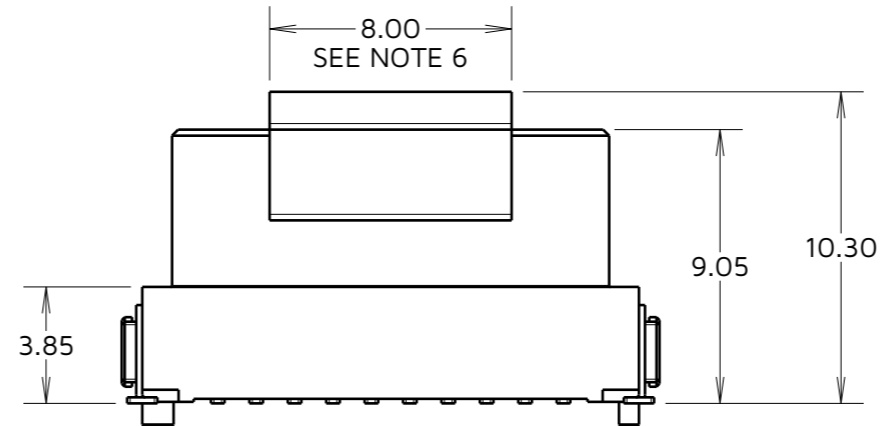
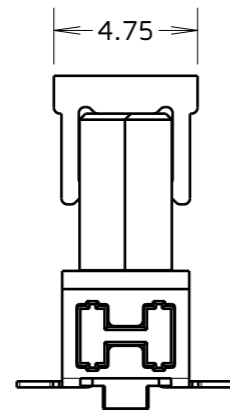
ALL DIMENSIONS IN mm

CONNECTOR HEIGHT DETAILS

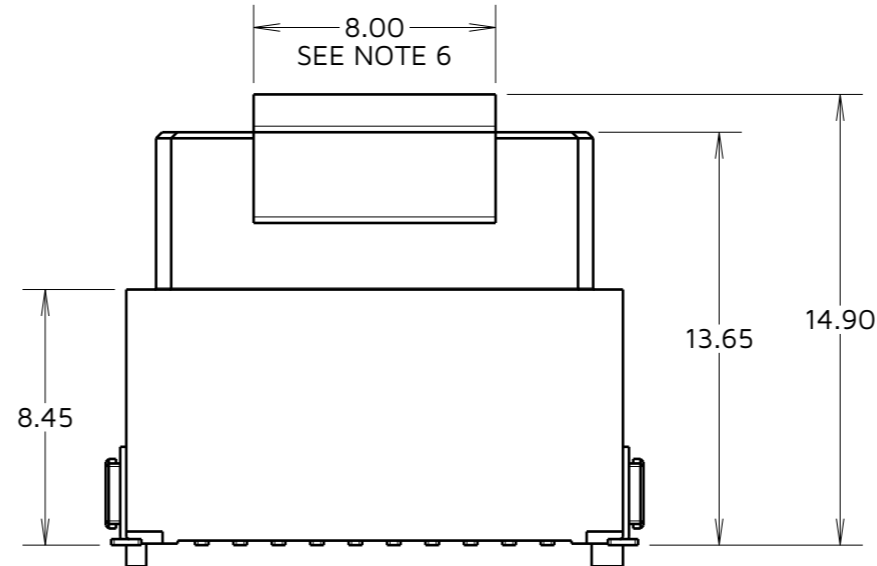
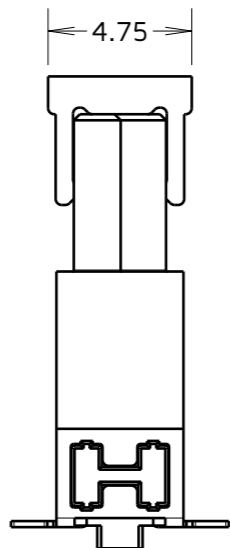
M55-600XX42R



M55-601XX42R



M55-602XX42R



NOTES:

- 5. ALL TOLERANCES ARE ± 0.20 , UNLESS OTHERWISE STATED.
- 6. PICK & PLACE CAP POSITIONED CENTRALLY.

RA	11	16.02.26	37864
NAME	ISS.	DATE	CN/CO
APPROVED: R.ALEXANDER			
CHECKED:		J.WALKER	
DRAWN:		M.PERREN	

HARWIN

www.harwin.com

TOLERANCES

- X. = $\pm 1\text{mm}$
- X.X = $\pm 0.50\text{mm}$
- X.XX = $\pm 0.20\text{mm}$
- X.XXX = $\pm 0.01\text{mm}$
- ANGLES = $\pm 5^\circ$
- UNLESS STATED

THIS DRAWING AND ANY INFORMATION OR DESCRIPTIVE MATTER SET OUT HEREON ARE CONFIDENTIAL AND COPYRIGHT PROPERTY OF THE HARWIN GROUP AND MUST NOT BE DISCLOSED, LOANED, COPIED OR USED FOR MANUFACTURING, TENDERING OR FOR ANY OTHER PURPOSE WITHOUT THEIR WRITTEN PERMISSION.

MATERIAL & FINISH:

SEE SHEET 7

TITLE:

1.27mm PITCH VERTICAL FEMALE CONNECTOR

DRAWING NUMBER:
M55-600XX42R to
M55-602XX42R

SHT
8
OF
14

Customer Information Sheet

IF IN DOUBT - ASK

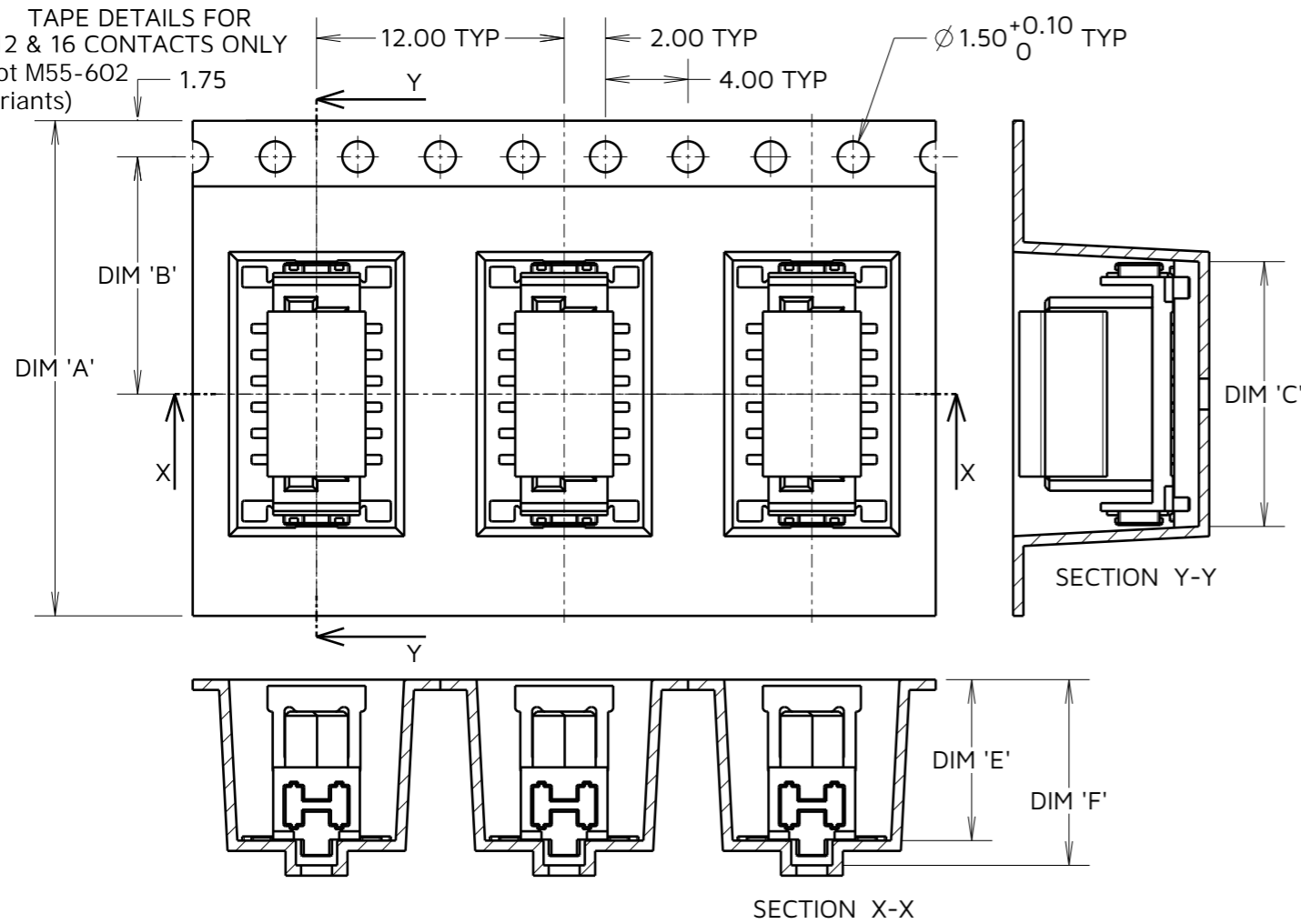
©

NOT TO SCALE

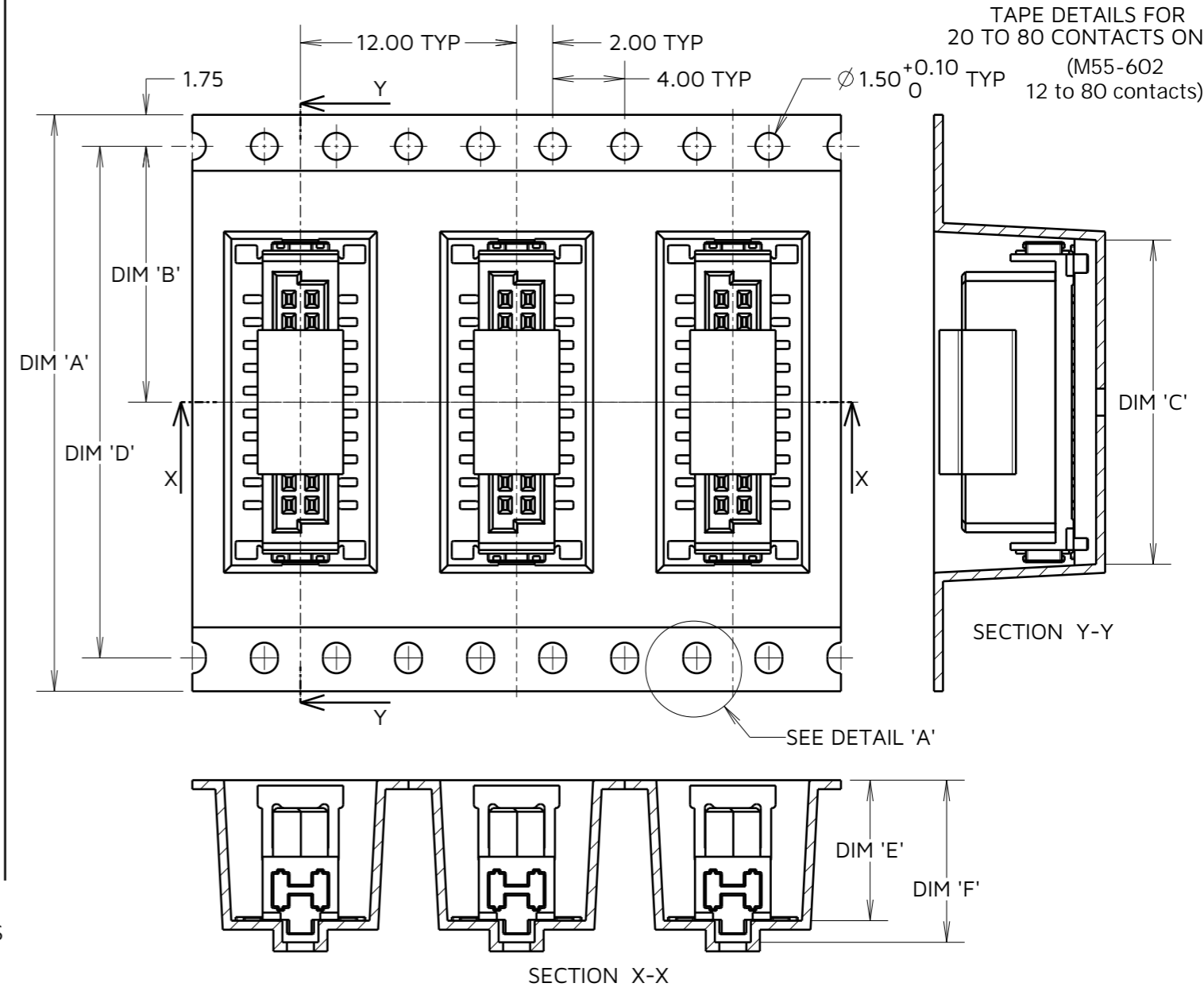
THIRD ANGLE PROJECTION

ALL DIMENSIONS IN mm

TAPE DETAILS FOR
12 & 16 CONTACTS ONLY
(not M55-602
variants)



TAPE DETAILS FOR
20 TO 80 CONTACTS ONLY
(M55-602
12 to 80 contacts)



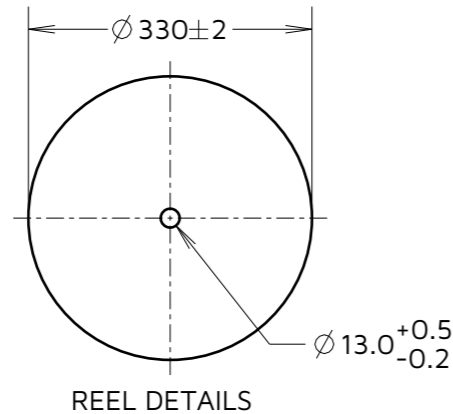
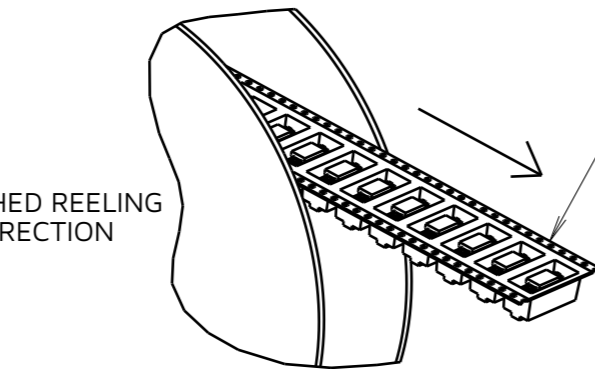
ORDER CODE:
M55-60XXX42R

CONNECTOR HEIGHT:
SMT HARDWARE:
0 = 6.25mm
1 = 9.05mm
2 = 13.65mm

THR HARDWARE:
5 = 6.25mm
6 = 9.05mm
7 = 13.65mm

TOTAL No. OF CONTACTS:
12, 16, 20, 26,
32, 40, 50, 68, 80

FINISHED REELING
DIRECTION



ROUND HOLES
THIS SIDE

TABLE 2: PACKING TAPE DETAILS 1 (X = 0, 1, 2)

PART No.	DIMENSION			
	DIM 'A' ±0.30	DIM 'B'	DIM 'C' ±0.15	DIM 'D'
M55-60X1242R	24.00	11.50	12.90	N/A
M55-60X1642R				
M55-60X2042R	32.00	14.20	18.00	28.40
M55-60X2642R				
M55-60X3242R	44.00	20.20	21.79	40.40
M55-60X4042R				
M55-60X5042R	56.00	26.20	37.03	52.40
M55-60X6842R			48.46	68.40
M55-60X8042R	72.00	34.20	56.08	

TABLE 3: PACKING TAPE DETAILS 2

PART No.	DIMENSION		PACK QTY (PCS)
	DIM 'E'	DIM 'F'	
M55-600XX42R	7.8	9.0	550
M55-601XX42R	10.6	11.7	400
M55-602XX42R	15.2	16.4	200

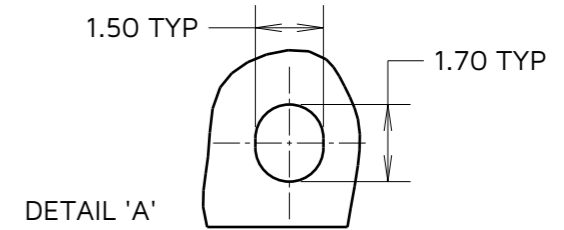


TABLE 2 cont'd: EXCEPTIONS

PART No.	DIMENSION			
	DIM 'A' ±0.30	DIM 'B'	DIM 'C' ±0.15	DIM 'D'
M55-6021242R	32.00	14.20	12.90	28.40
M55-6021642R				

NOTES:
7. PRODUCT IS TAPE AND REELED IN GENERAL ACCORDANCE WITH EIA-481 (ELECTRONIC INDUSTRIES ASSOCIATION).
8. FOR CONNECTOR DETAILS, SEE SHEET 4 & 5.

HARWIN

www.harwin.com

TOLERANCES
X = ±1mm
X.X = ±0.50mm
X.XX = ±0.20mm
X.XXX = ±0.01mm
ANGLES = ±5°
UNLESS STATED

THIS DRAWING AND ANY INFORMATION OR DESCRIPTIVE MATTER SET OUT HEREON ARE CONFIDENTIAL AND COPYRIGHT PROPERTY OF THE HARWIN GROUP AND MUST NOT BE DISCLOSED, LOANED, COPIED OR USED FOR MANUFACTURING, TENDERING OR FOR ANY OTHER PURPOSE WITHOUT THEIR WRITTEN PERMISSION.

MATERIAL & FINISH:

SEE SHEET 7

TITLE:
1.27mm PITCH VERTICAL FEMALE CONNECTOR

DRAWING NUMBER:
M55-600XX42R to M55-602XX42R

RA	11	16.02.26	37864
NAME	ISS.	DATE	CN/CO
APPROVED: R.ALEXANDER			
CHECKED: J.WALKER			
DRAWN: M.PERREN			

Customer Information Sheet

IF IN DOUBT - ASK

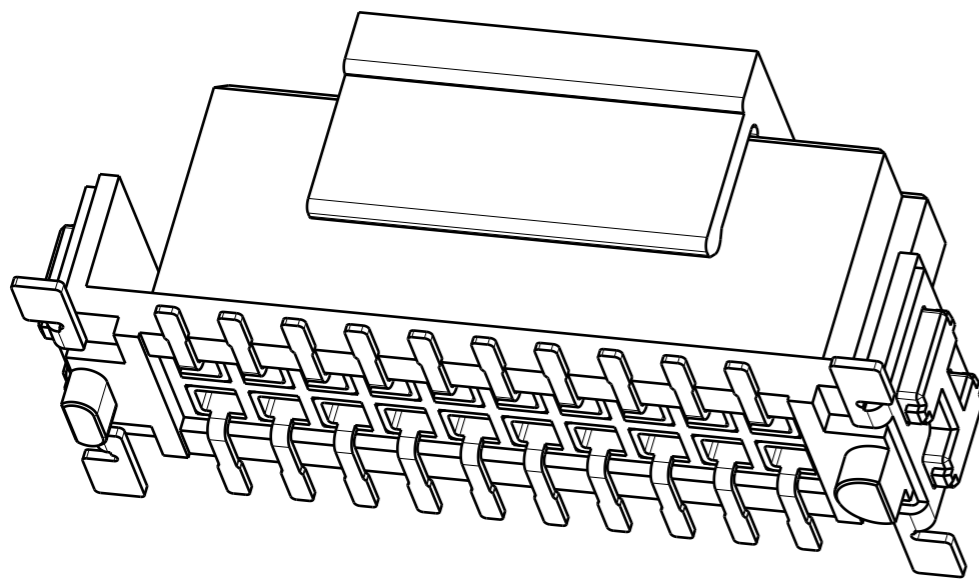
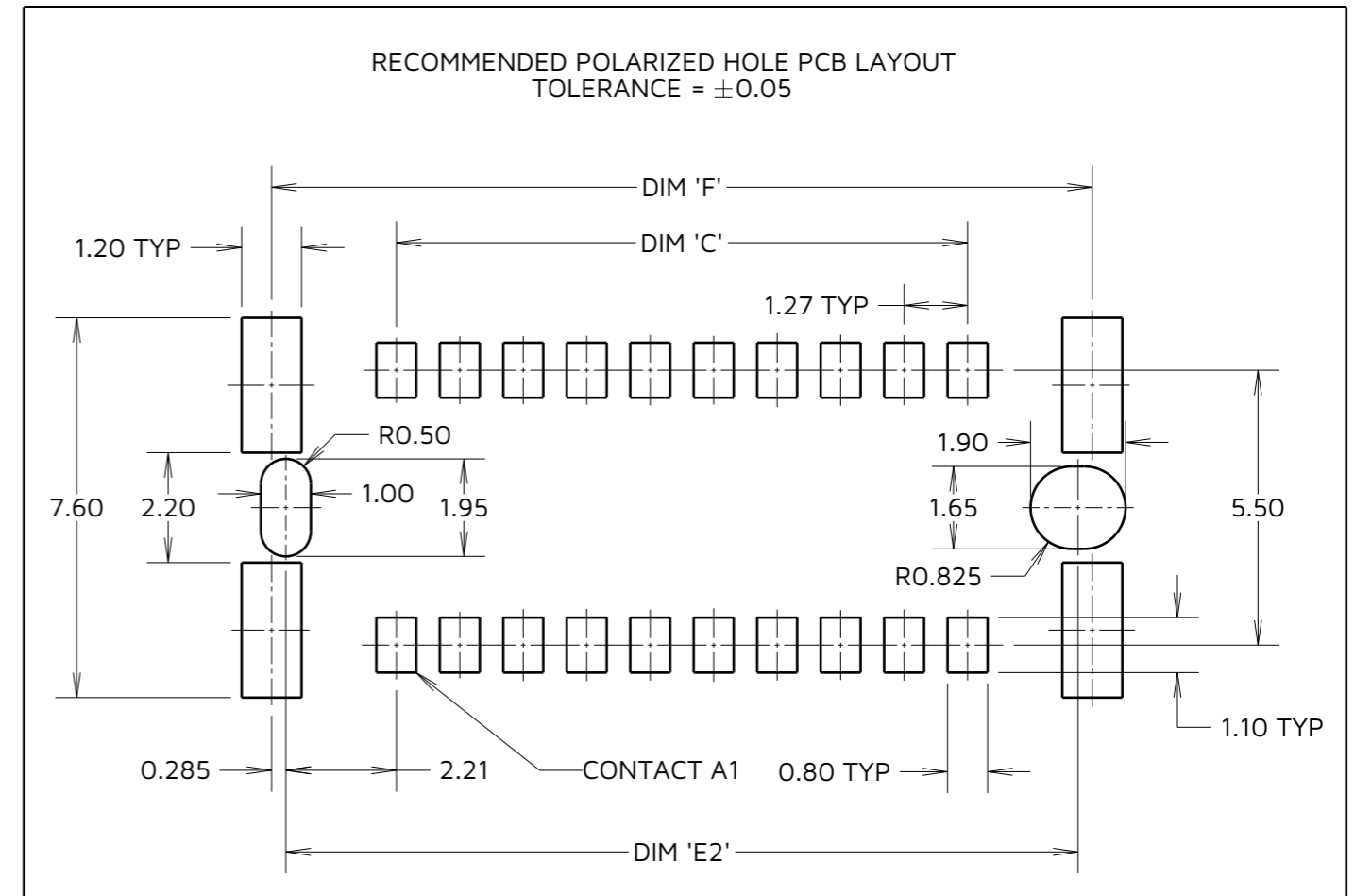
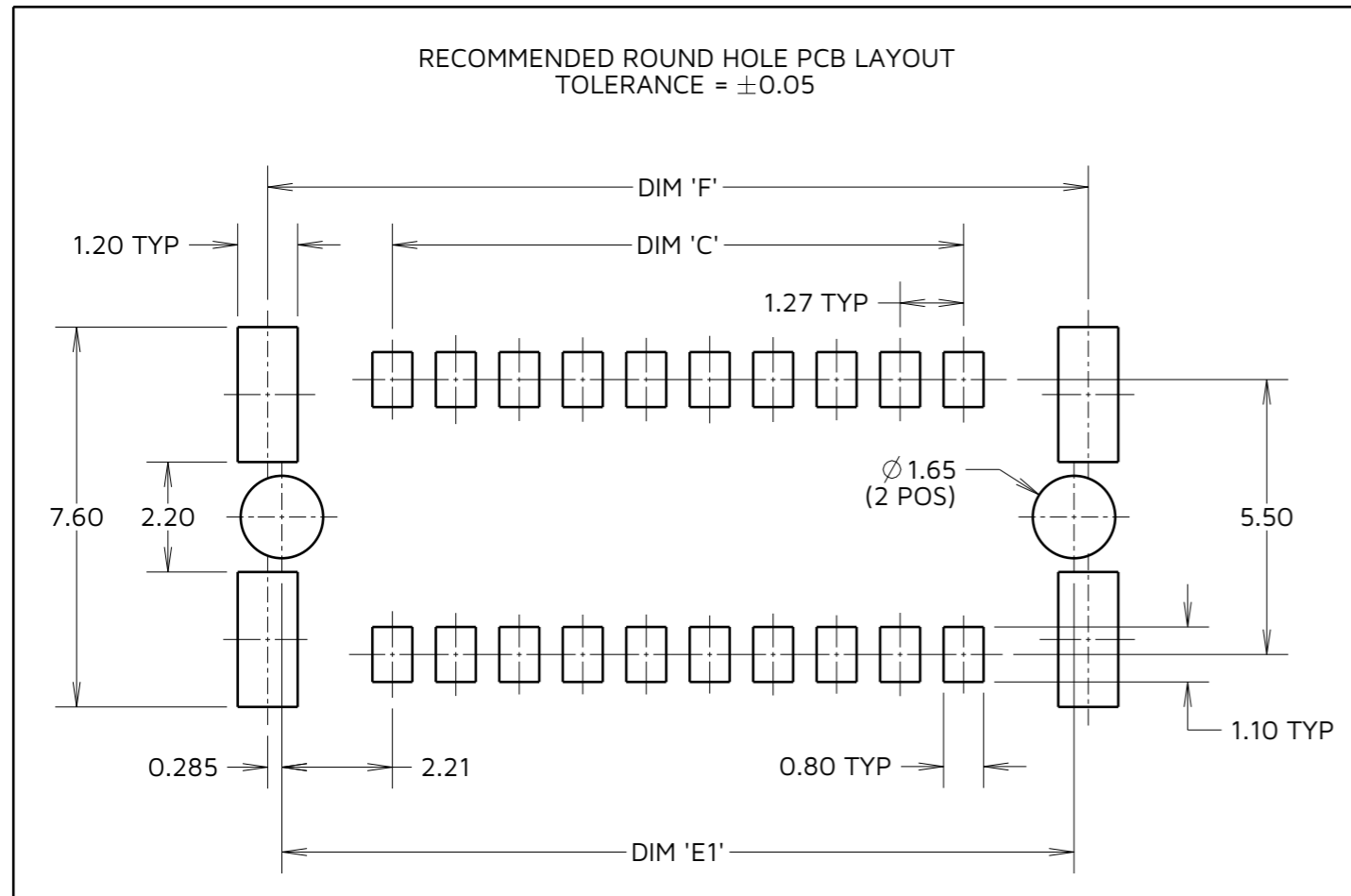


NOT TO SCALE

THIRD ANGLE PROJECTION

ALL DIMENSIONS IN mm

ROUND AND POLARIZED RECOMMENDED PCB LAYOUTS OPTIONS



ORDER CODE:

M55-60XXX42R

CONNECTOR HEIGHT:

SMT HARDWARE:

- 0 = 6.25mm
- 1 = 9.05mm
- 2 = 13.65mm

THR HARDWARE:

- 5 = 6.25mm
- 6 = 9.05mm
- 7 = 13.65mm

TOTAL No. OF CONTACTS:

- 12, 16, 20, 26,
- 32, 40, 50, 68, 80

TABLE 4: PCB DIMENSIONS (X = 0, 1, 2)

PART No.	DIM 'C'	DIM 'E1'	DIM 'E2'	DIM 'F'
M55-60X1242R	6.35	10.77	10.70	11.34
M55-60X1642R	8.89	13.31	13.24	13.88
M55-60X2042R	11.43	15.85	15.78	16.42
M55-60X2642R	15.24	19.66	19.59	20.23
M55-60X3242R	19.05	23.47	23.40	24.04
M55-60X4042R	24.13	28.55	28.48	29.12
M55-60X5042R	30.48	34.90	34.83	35.47
M55-60X6842R	41.91	46.33	46.26	46.90
M55-60X8042R	49.53	53.95	53.88	54.52

RA	11	16.02.26	37864
NAME	ISS.	DATE	CN/CO
APPROVED: R.ALEXANDER			
CHECKED: J.WALKER			
DRAWN: M.PERREN			

HARWIN

www.harwin.com

TOLERANCES
X. = ± 1 mm
X.X = ± 0.50 mm
X.XX = ± 0.20 mm
X.XXX = ± 0.01 mm
ANGLES = $\pm 5^\circ$
UNLESS STATED

THIS DRAWING AND ANY INFORMATION OR DESCRIPTIVE MATTER SET OUT HEREON ARE CONFIDENTIAL AND COPYRIGHT PROPERTY OF THE HARWIN GROUP AND MUST NOT BE DISCLOSED, LOANED, COPIED OR USED FOR MANUFACTURING, TENDERING OR FOR ANY OTHER PURPOSE WITHOUT THEIR WRITTEN PERMISSION.

MATERIAL & FINISH:
SEE SHEET 7

TITLE:
1.27mm PITCH VERTICAL FEMALE CONNECTOR

DRAWING NUMBER:
M55-600XX42R to M55-602XX42R

SHT
10
OF
14

Customer Information Sheet

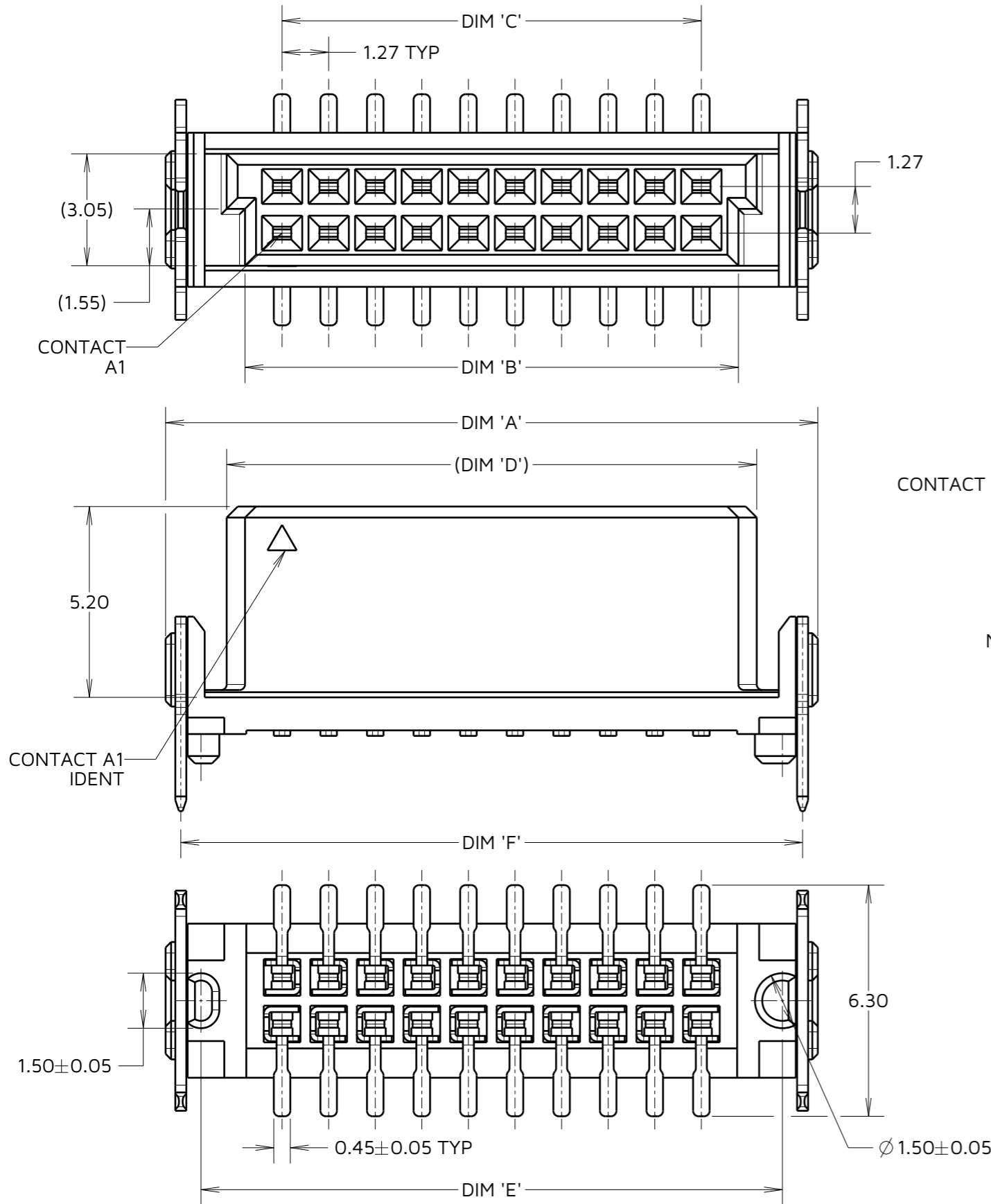
IF IN DOUBT - ASK



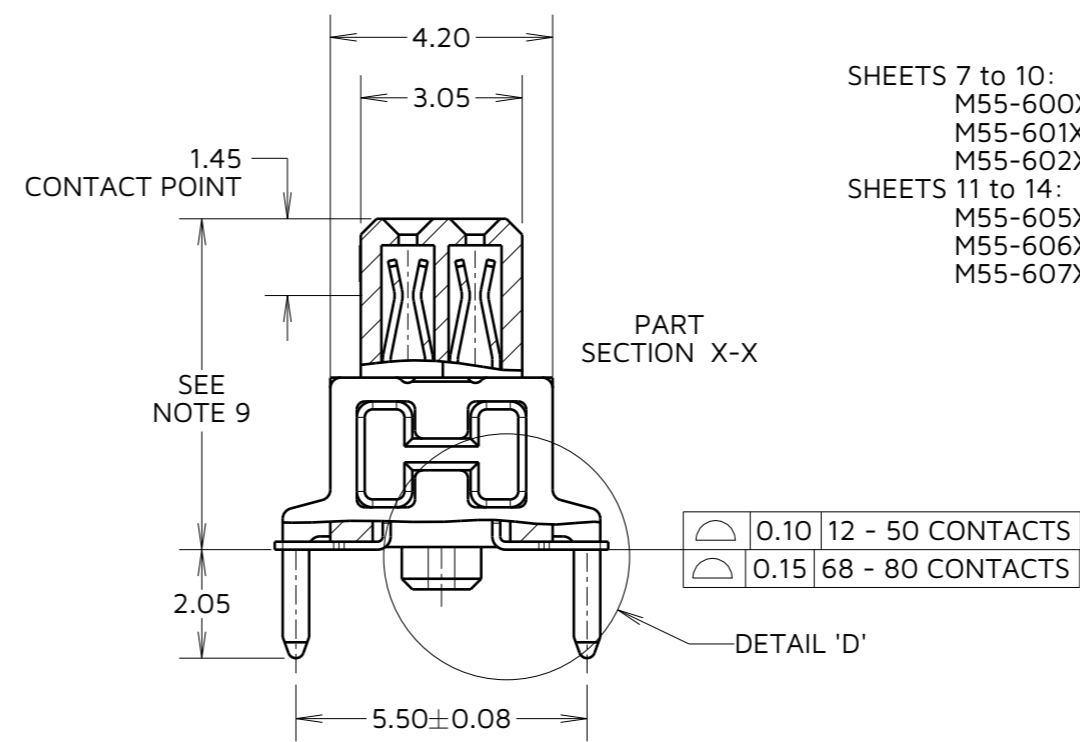
NOT TO SCALE

THIRD ANGLE PROJECTION

ALL DIMENSIONS IN mm



PART No.	DIM 'A'	DIM 'B'	DIM 'C'	DIM 'D'	DIM 'E'	DIM 'F'	DIM 'G'
M55-60X1242R	12.70	8.37	6.35	9.37	10.77	11.87	10.57
M55-60X1642R	15.24	10.91	8.89	11.91	13.31	14.41	13.11
M55-60X2042R	17.78	13.45	11.43	14.45	15.85	16.95	15.65
M55-60X2642R	21.59	17.26	15.24	18.26	19.66	20.76	19.46
M55-60X3242R	25.40	21.07	19.05	22.07	23.47	24.57	23.27
M55-60X4042R	30.48	26.15	24.13	27.15	28.55	29.65	28.35
M55-60X5042R	36.83	32.50	30.48	33.50	34.90	36.00	34.70
M55-60X6842R	48.26	43.93	41.91	44.93	46.33	47.43	46.13
M55-60X8042R	55.88	51.55	49.53	52.55	53.95	55.05	53.75



SHEETS 7 to 10:
M55-600XX42R
M55-601XX42R
M55-602XX42R
SHEETS 11 to 14:
M55-605XX42R
M55-606XX42R
M55-607XX42R

ORDER CODE:
M55-60XXX42R
CONNECTOR HEIGHT:
SMT HARDWARE:
0 = 6.25mm
1 = 9.05mm
2 = 13.65mm
THR HARDWARE:
5 = 6.25mm
6 = 9.05mm
7 = 13.65mm
TOTAL No. OF CONTACTS:
12, 16, 20, 26,
32, 40, 50, 68, 80

SPECIFICATIONS:
MATERIAL:
HOUSING = HIGH TEMP, LCP, UL94V-0
CONTACT = PHOSPHOR BRONZE
RETAINING STRAP = BRASS
PLATING:
CONTACT = GOLD OVER NICKEL ON CONTACT AREA,
TIN OVER NICKEL ON TAILS
RETAINING STRAP = TIN OVER NICKEL
PACKING:
TAPE & REEL

FOR COMPLETE SPECIFICATION, SEE COMPONENT SPECIFICATION C047XX (LATEST ISSUE)

NOTES:
9. SEE ORDER CODE AND SHEET 12 FOR CONNECTOR HEIGHT AND CAP DETAILS. SEE SHEET 14 FOR RECOMMENDED PCB LAYOUTS.
10. FOR TAPE AND REEL DETAILS, SEE SHEET 13.
11. ALL TOLERANCES ARE ±0.20, UNLESS OTHERWISE STATED.
12. COMPLETE SPECIFICATION PLEASE SEE COMPONENT SPECIFICATION C047XX (LATEST ISSUE).



TOLERANCES
X. = ±1mm
X.X = ±0.50mm
X.XX = ±0.20mm
X.XXX = ±0.01mm
ANGLES = ±5°
UNLESS STATED

THIS DRAWING AND ANY INFORMATION OR DESCRIPTIVE MATTER SET OUT HEREON ARE CONFIDENTIAL AND COPYRIGHT PROPERTY OF THE HARWIN GROUP AND MUST NOT BE DISCLOSED, LOANED, COPIED OR USED FOR MANUFACTURING, TENDERING OR FOR ANY OTHER PURPOSE WITHOUT THEIR WRITTEN PERMISSION.

MATERIAL & FINISH:
SEE ABOVE

TITLE:
1.27mm PITCH VERTICAL FEMALE CONNECTOR
DRAWING NUMBER:
M55-605XX42R to M55-607XX42R

RA	11	16.02.26	37864
NAME	ISS.	DATE	CN/CO
APPROVED: R.ALEXANDER			
CHECKED: J.WALKER			
DRAWN: M.PERREN			

Customer Information Sheet

IF IN DOUBT - ASK

©

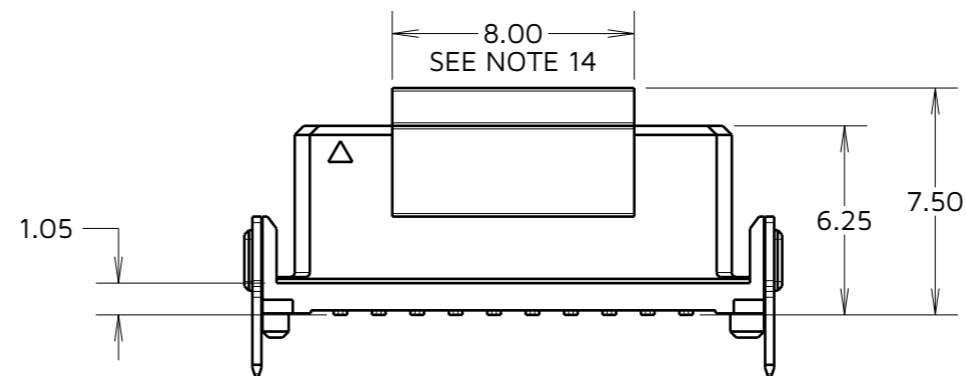
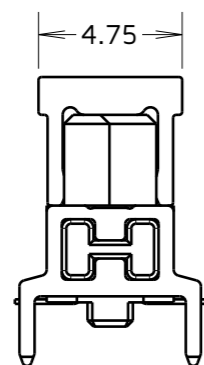
NOT TO SCALE

THIRD ANGLE PROJECTION

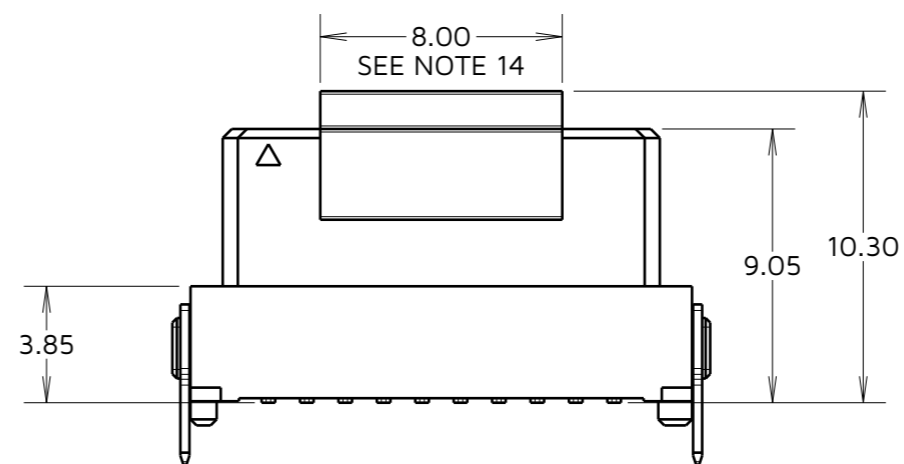
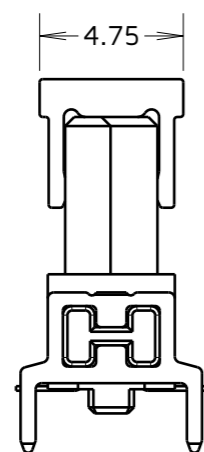
ALL DIMENSIONS IN mm

CONNECTOR HEIGHT DETAILS

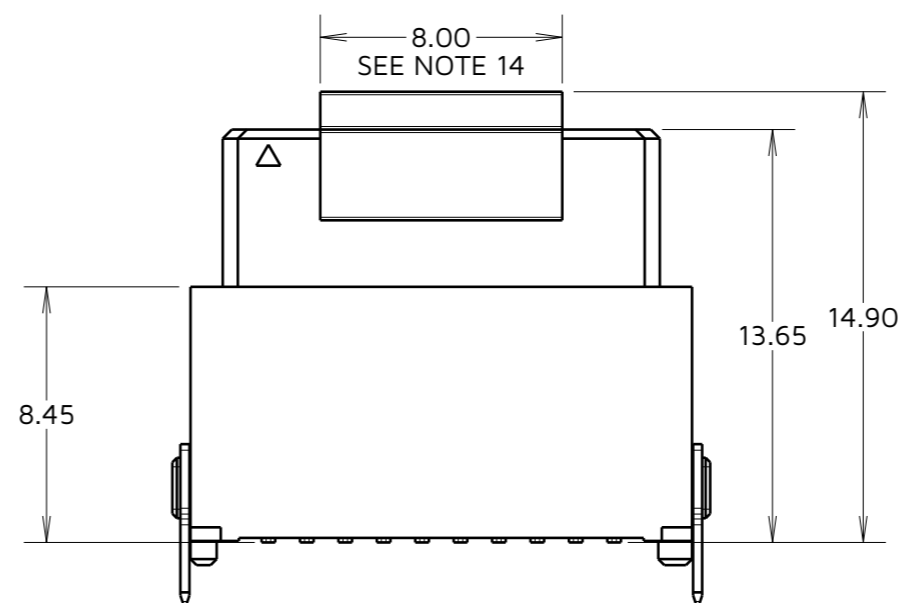
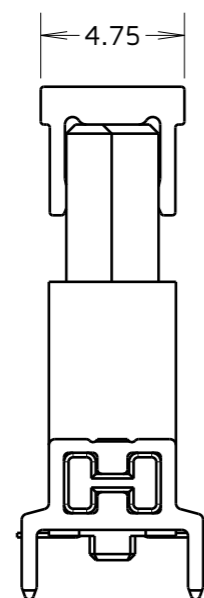
M55-605XX42R



M55-606XX42R



M55-607XX42R



NOTES:

- 13. ALL TOLERANCES ARE ± 0.20 , UNLESS OTHERWISE STATED.
- 14. PICK & PLACE CAP POSITIONED CENTRALLY.

RA	11	16.02.26	37864
NAME	ISS.	DATE	CN/CO
APPROVED: R.ALEXANDER			
CHECKED: J.WALKER			
DRAWN: M.PERREN			

HARWIN

www.harwin.com

TOLERANCES

- X. = ± 1 mm
- X.X = ± 0.50 mm
- X.XX = ± 0.20 mm
- X.XXX = ± 0.01 mm
- ANGLES = $\pm 5^\circ$
- UNLESS STATED

THIS DRAWING AND ANY INFORMATION OR DESCRIPTIVE MATTER SET OUT HEREON ARE CONFIDENTIAL AND COPYRIGHT PROPERTY OF THE HARWIN GROUP AND MUST NOT BE DISCLOSED, LOANED, COPIED OR USED FOR MANUFACTURING, TENDERING OR FOR ANY OTHER PURPOSE WITHOUT THEIR WRITTEN PERMISSION.

MATERIAL & FINISH:

SEE SHEET 11

TITLE:

1.27mm PITCH VERTICAL FEMALE CONNECTOR

DRAWING NUMBER:
M55-605XX42R to
M55-607XX42R

SHT
12
OF
14

Customer Information Sheet

IF IN DOUBT - ASK

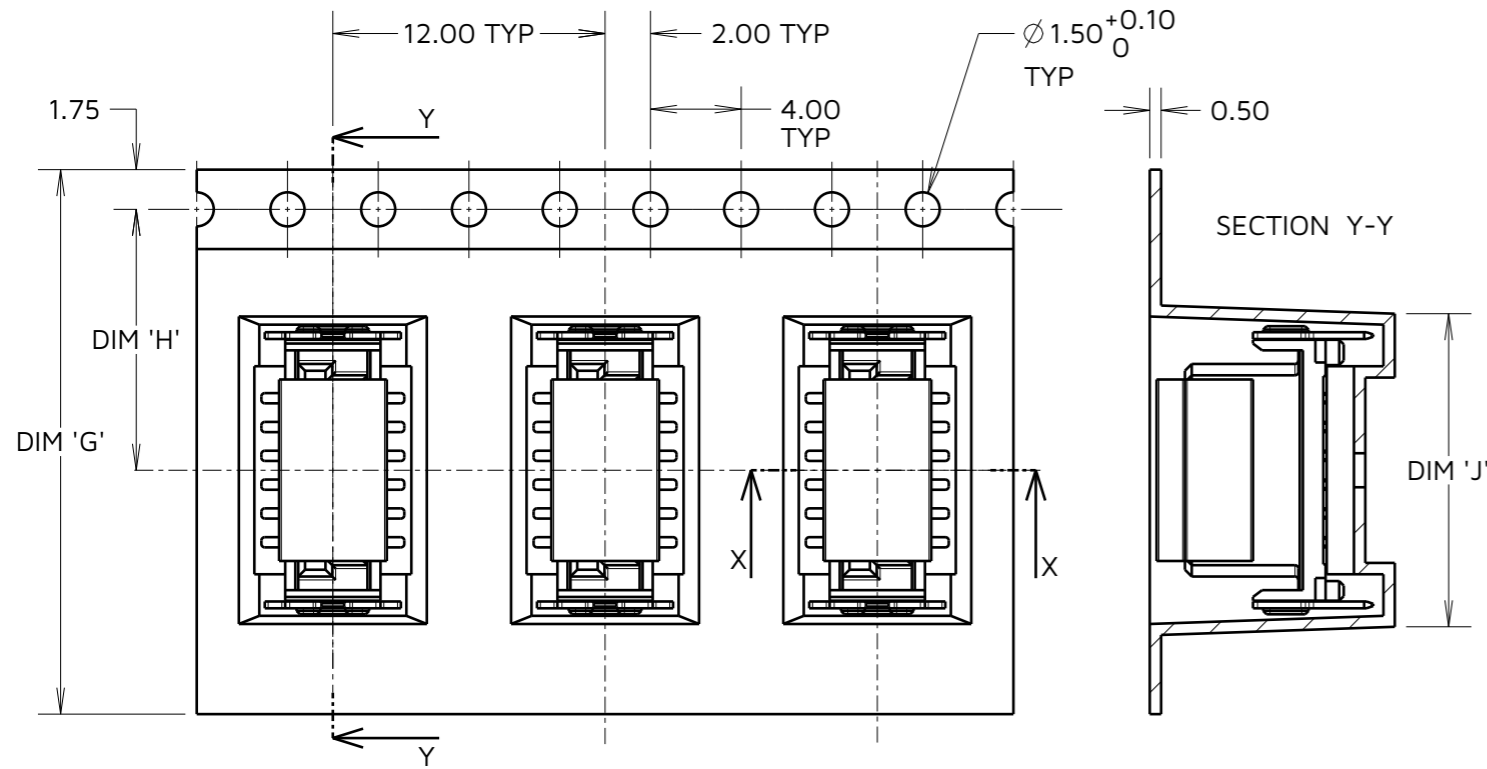
©

NOT TO SCALE

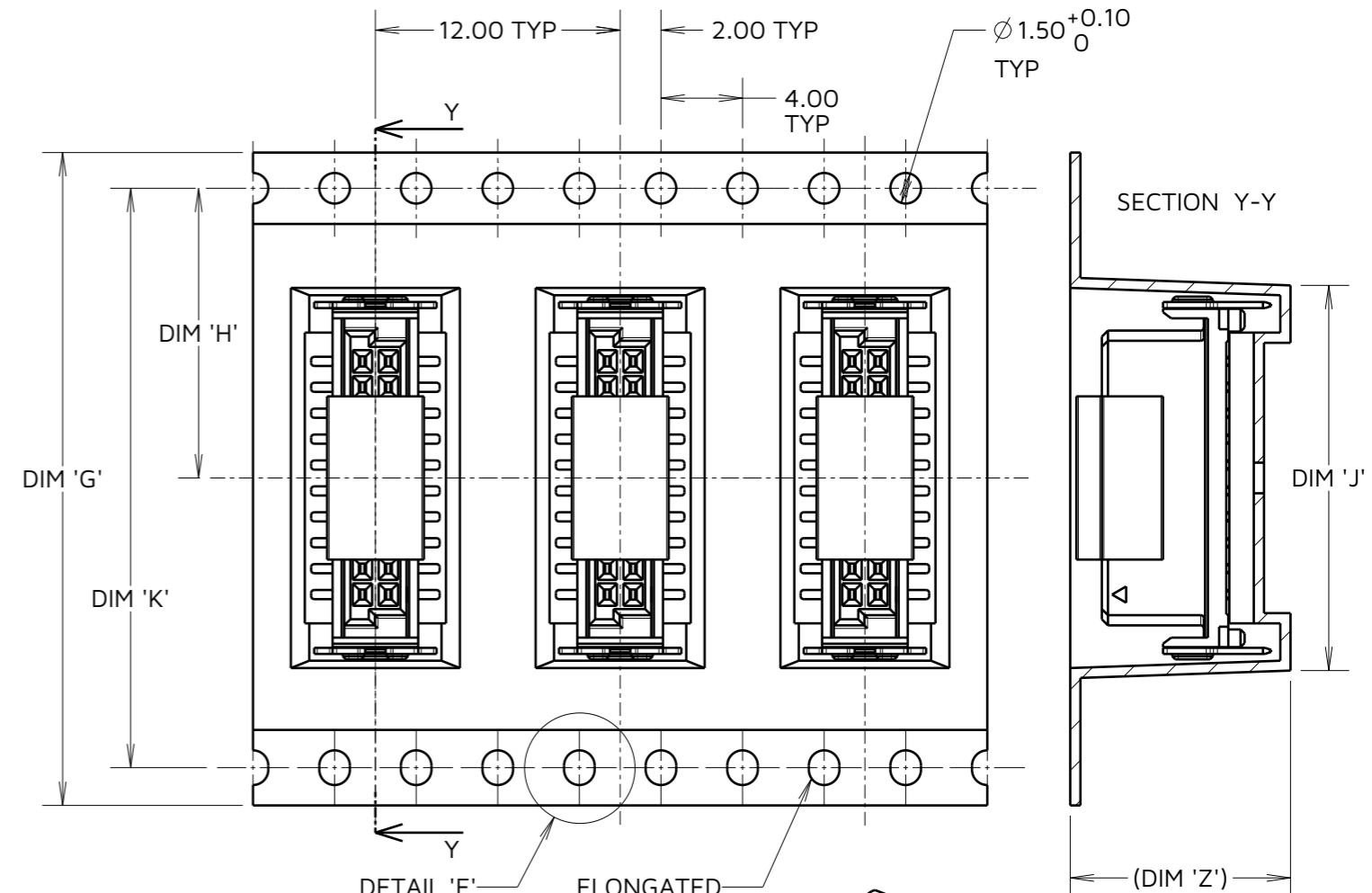
THIRD ANGLE PROJECTION

ALL DIMENSIONS IN mm

TAPE DETAILS FOR 12 TO 16 CONTACT CONNECTORS (not M55-607 variants)



TAPE DETAILS FOR 20 TO 80 CONTACT CONNECTORS (M55-607 12 to 80 contacts)



PART SECTION X-X

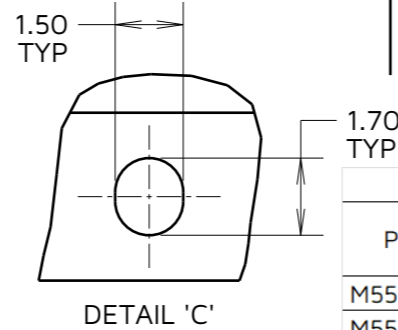
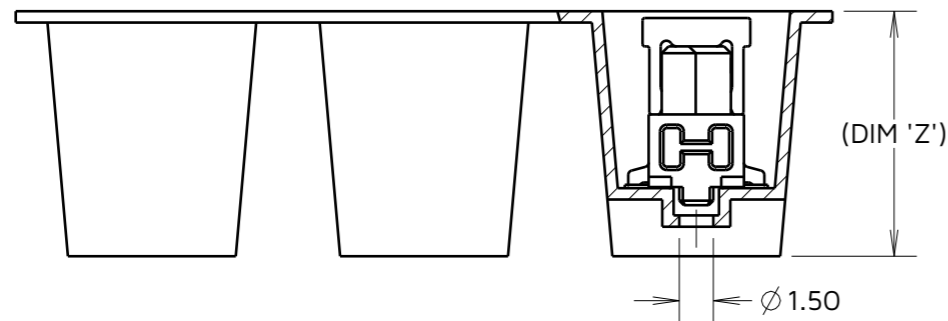


TABLE 6 cont'd: EXCEPTIONS

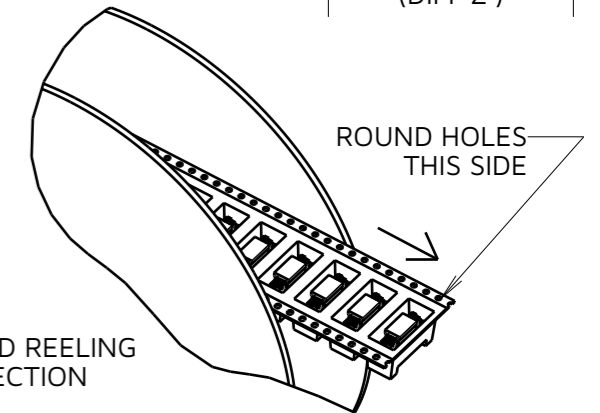
PART No.	DIMENSION			
	DIM 'G'±0.30	DIM 'H'	DIM 'J'	DIM 'K'
M55-6071242R	32.00	14.20	13.8	28.40
M55-6071642R			16.3	

TABLE 6: PACKING TAPE DETAILS 1 (X = 5, 6, 7)

PART No.	DIMENSIONS			
	DIM 'G' ±0.30	DIM 'H'	DIM 'J'	DIM 'K'
M55-60X1242R	24.00	11.50	13.8	-
M55-60X1642R	24.00	11.50	16.3	-
M55-60X2042R	32.00	14.20	18.9	28.40
M55-60X2642R	44.00	20.20	22.7	40.40
M55-60X3242R	44.00	20.20	26.5	40.40
M55-60X4042R	44.00	20.20	31.6	40.40
M55-60X5042R	56.00	26.20	37.9	52.40
M55-60X6842R	72.00	34.20	49.4	68.40
M55-60X8042R	72.00	34.20	57.0	68.40

TABLE 7: PACKING TAPE DETAILS 2

PART No.	DIMENSIONS		PACK QTY (PCS)
	DIM 'Z'		
M55-605XX42R	10.7		450
M55-606XX42R	13.5		350
M55-607XX42R	18.1		180



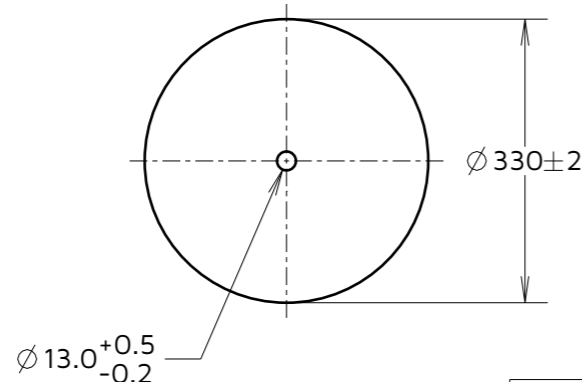
ORDER CODE: M55-60XXX42R

CONNECTOR HEIGHT:
SMT HARDWARE:
0 = 6.25mm
1 = 9.05mm
2 = 13.65mm

THR HARDWARE:
5 = 6.25mm
6 = 9.05mm
7 = 13.65mm

TOTAL No. OF CONTACTS:
12, 16, 20, 26,
32, 40, 50, 68, 80

REEL DETAILS



NOTES:
15. PRODUCT IS TAPE AND REELED IN GENERAL ACCORDANCE WITH EIA-481 (ELECTRONIC INDUSTRIES ASSOCIATION).
16. FOR CONNECTOR DETAILS, SEE SHEET 11 & 12.

HARWIN

www.harwin.com

TOLERANCES
X. = ±1mm
X.X = ±0.50mm
X.XX = ±0.20mm
X.XXX = ±0.01mm
ANGLES = ±5°
UNLESS STATED

THIS DRAWING AND ANY INFORMATION OR DESCRIPTIVE MATTER SET OUT HEREON ARE CONFIDENTIAL AND COPYRIGHT PROPERTY OF THE HARWIN GROUP AND MUST NOT BE DISCLOSED, LOANED, COPIED OR USED FOR MANUFACTURING, TENDERING OR FOR ANY OTHER PURPOSE WITHOUT THEIR WRITTEN PERMISSION.

MATERIAL & FINISH:
SEE SHEET 11

TITLE:
1.27mm PITCH VERTICAL FEMALE CONNECTOR
DRAWING NUMBER:
M55-605XX42R to
M55-607XX42R

RA	11	16.02.26	37864
NAME	ISS.	DATE	CN/CO
APPROVED: R.ALEXANDER			
CHECKED: J.WALKER			
DRAWN: M.PERREN			

Customer Information Sheet

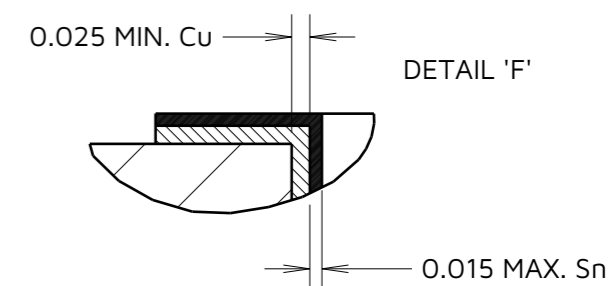
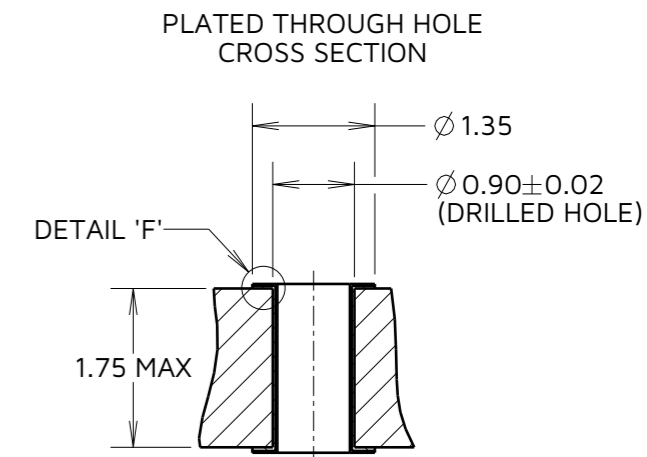
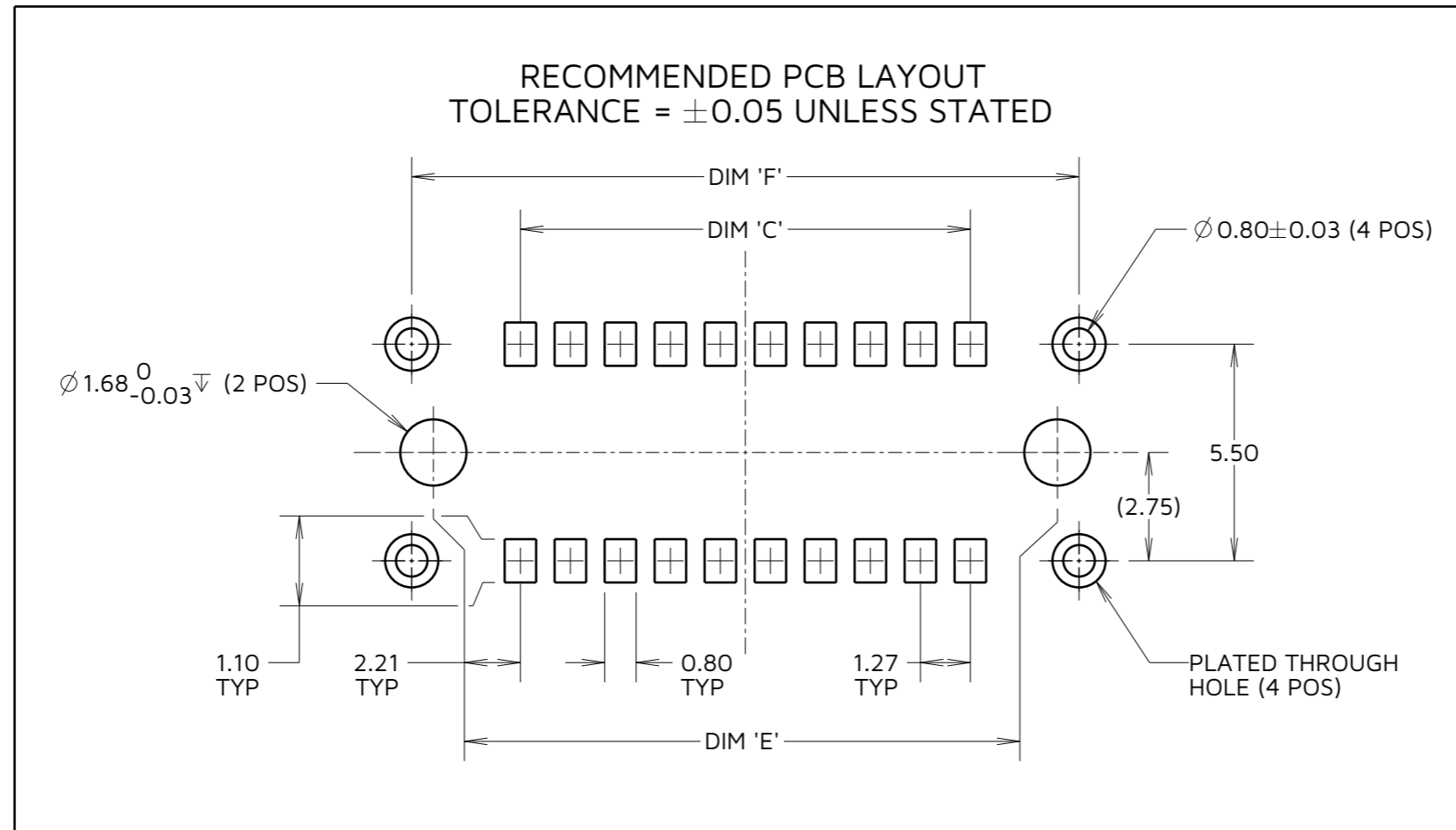
IF IN DOUBT - ASK

©

NOT TO SCALE

THIRD ANGLE PROJECTION

ALL DIMENSIONS IN mm



ORDER CODE:

M55-60XXX42R

CONNECTOR HEIGHT:

SMT HARDWARE:

- 0 = 6.25mm
- 1 = 9.05mm
- 2 = 13.65mm

THR HARDWARE:

- 5 = 6.25mm
- 6 = 9.05mm
- 7 = 13.65mm

TOTAL No. OF CONTACTS:

- 12, 16, 20, 26,
- 32, 40, 50, 68, 80

TABLE 8: PCB DIMENSIONS (X = 5, 6, 7)

PART No.	DIM 'C'	DIM 'E'	DIM 'F'
M55-60X1242R	6.35	10.77	11.87
M55-60X1642R	8.89	13.31	14.41
M55-60X2042R	11.43	15.85	16.95
M55-60X2642R	15.24	19.66	20.76
M55-60X3242R	19.05	23.47	24.57
M55-60X4042R	24.13	28.55	29.65
M55-60X5042R	30.48	34.90	36.00
M55-60X6842R	41.91	46.33	47.43
M55-60X8042R	49.53	53.95	55.05

HARWIN

www.harwin.com

TOLERANCES
 X. = ± 1 mm
 X.X = ± 0.50 mm
 X.XX = ± 0.20 mm
 X.XXX = ± 0.01 mm
 ANGLES = $\pm 5^\circ$
 UNLESS STATED

THIS DRAWING AND ANY INFORMATION OR DESCRIPTIVE MATTER SET OUT HEREON ARE CONFIDENTIAL AND COPYRIGHT PROPERTY OF THE HARWIN GROUP AND MUST NOT BE DISCLOSED, LOANED, COPIED OR USED FOR MANUFACTURING, TENDERING OR FOR ANY OTHER PURPOSE WITHOUT THEIR WRITTEN PERMISSION.

MATERIAL & FINISH:

SEE SHEET 11

TITLE:
1.27mm PITCH VERTICAL FEMALE CONNECTOR

DRAWING NUMBER:
M55-605XX42R to M55-607XX42R

RA	11	16.02.26	37864
NAME	ISS.	DATE	CN/CO
APPROVED: R.ALEXANDER			
CHECKED: J.WALKER			
DRAWN: M.PERREN			

SHT
14
OF
14