

Customer Information Sheet

IF IN DOUBT - ASK



NOT TO SCALE

THIRD ANGLE PROJECTION

ALL DIMENSIONS IN mm

SPECIFICATION:

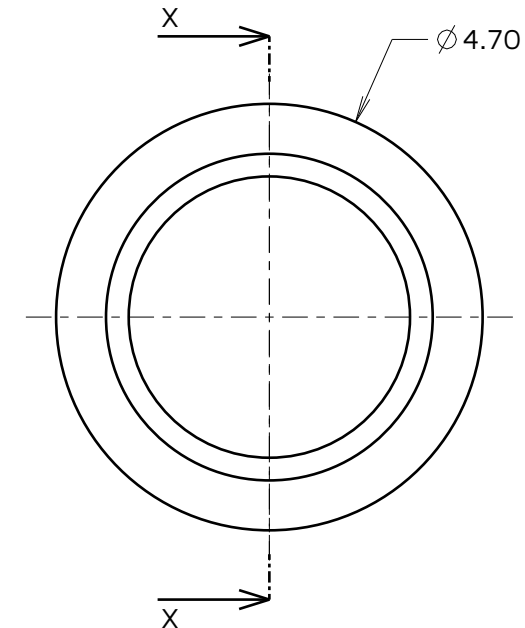
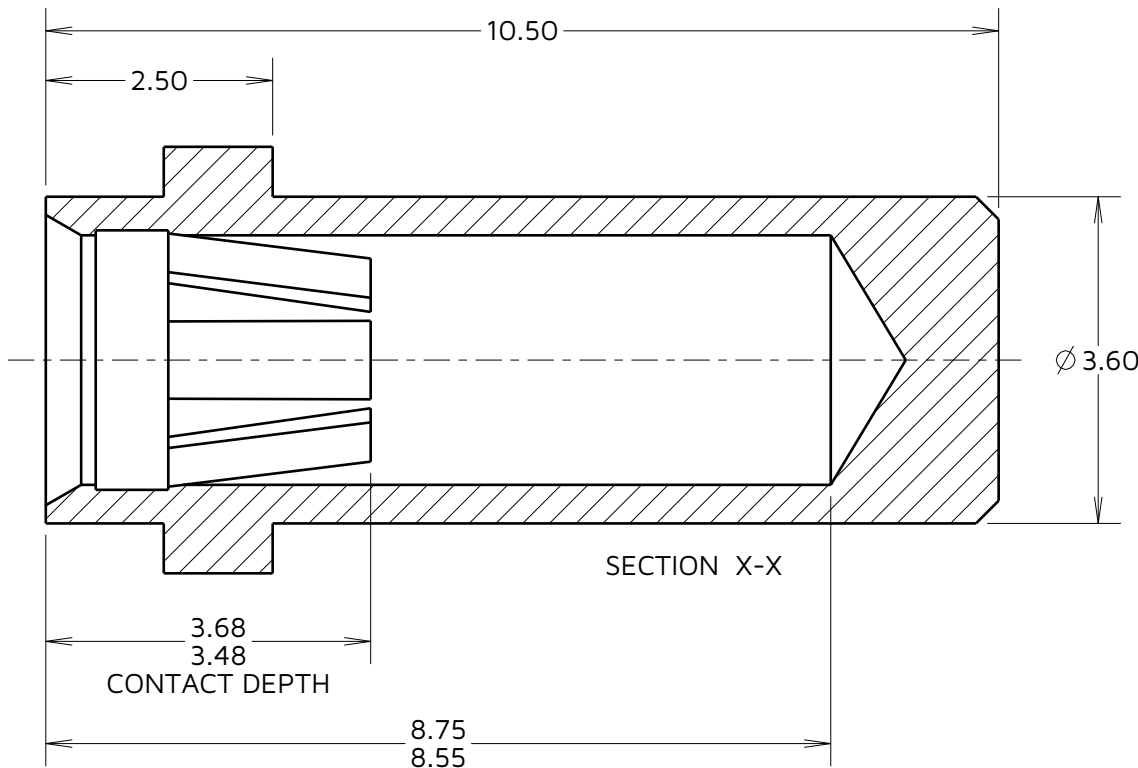
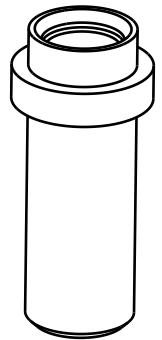
MATERIALS:

SHELL = BRASS

CLIP = BERYLLIUM COPPER

FOR COMPLETE MECHANICAL AND ELECTRICAL SPECIFICATION

SEE COMPONENT SPECIFICATION C031XX (LATEST ISSUE).



NOTES:

1. RECOMMENDED MOUNTING HOLE = $\phi 3.8\text{mm} \pm 0.05$.

2. RECOMMENDED PIN SIZE = $\phi 1.90$ TO 2.05mm

ORDER CODE:

H3490-XX

FINISH:

01 = GOLD CLIP, TIN SHELL
 05 = GOLD CLIP, GOLD SHELL
 46 = 100% TIN CLIP, TIN SHELL

MJ	8	24.06.24	34124
NAME	ISS.	DATE	CN/CO
APPROVED:		M. JELLEY	
CHECKED:		R. PORTLOCK	
DRAWN:		A.LIOTTA	

HARWIN

www.harwin.com

TOLERANCES

X. = $\pm 1\text{mm}$
 X.X = $\pm 0.50\text{mm}$
 X.XX = $\pm 0.20\text{mm}$
 X.XXX = $\pm 0.01\text{mm}$

ANGLES = $\pm 5^\circ$
 UNLESS STATED

THIS DRAWING AND ANY INFORMATION OR DESCRIPTIVE MATTER SET OUT HEREON ARE CONFIDENTIAL AND COPYRIGHT PROPERTY OF THE HARWIN GROUP AND MUST NOT BE DISCLOSED, LOANED, COPIED OR USED FOR MANUFACTURING, TENDERING OR FOR ANY OTHER PURPOSE WITHOUT THEIR WRITTEN PERMISSION.

MATERIAL & FINISH:

SEE ABOVE

TITLE:

**SOCKET ASSEMBLY
 FOR $\phi 2.00\text{mm}$ PIN**

DRAWING NUMBER:

H3490-XX

SHT
 2
 OF 2