

Customer Information Sheet

Specifications:

Material:

Housing: Glass Filled PPS, UL94V-0, Black

Power Contact:

Body, Sleeve, Inner Contact, End Plug = Copper Alloy

Latching Collar = Beryllium Copper

Insulator = PTFE

Board Mount Jackscrew, Screw = Stainless Steel

Finish:

Power Contact:

Body, Sleeve, Inner Contact, End Plug = Gold

Latching Collar = Nickel

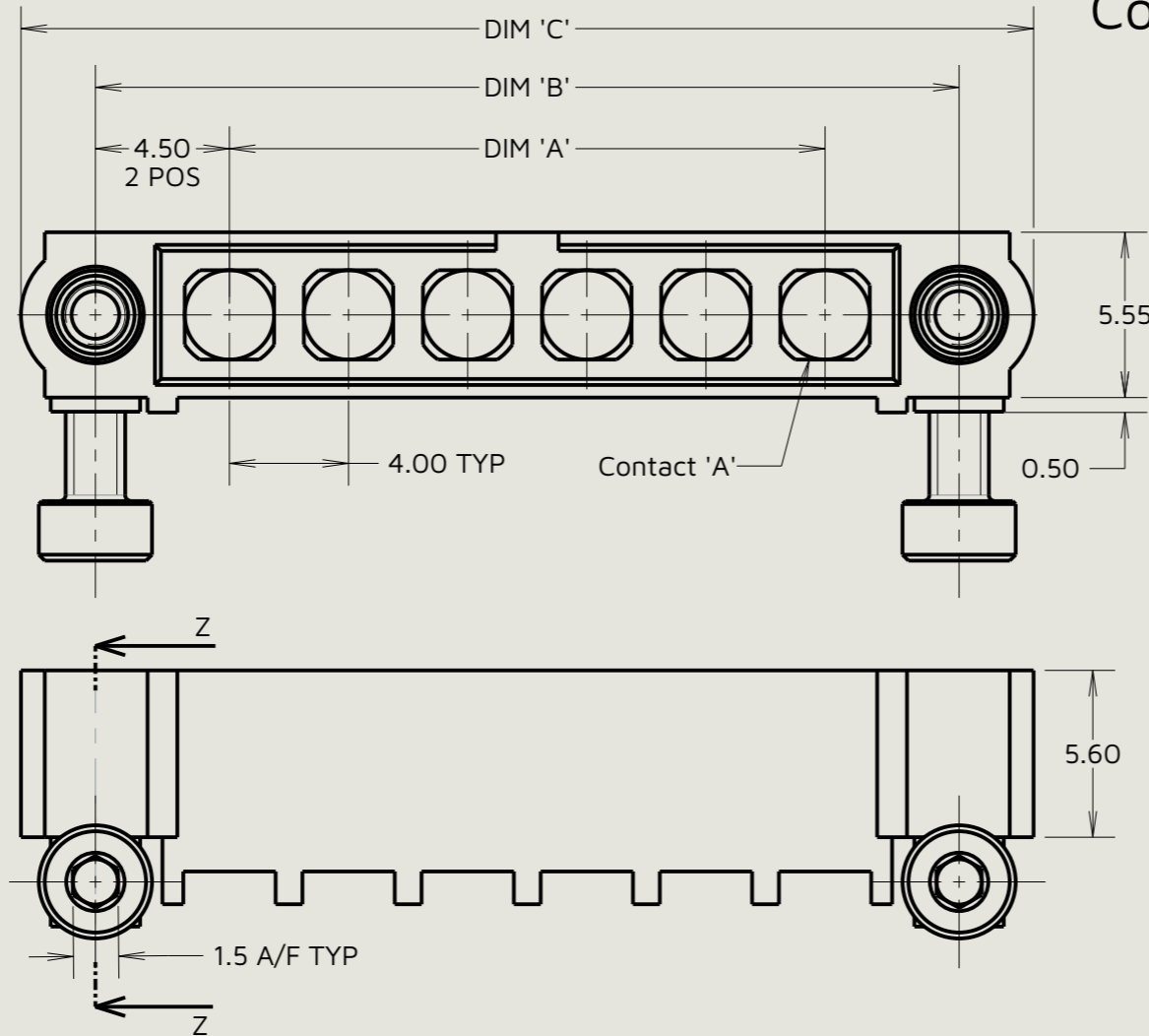
Packing:

Bag

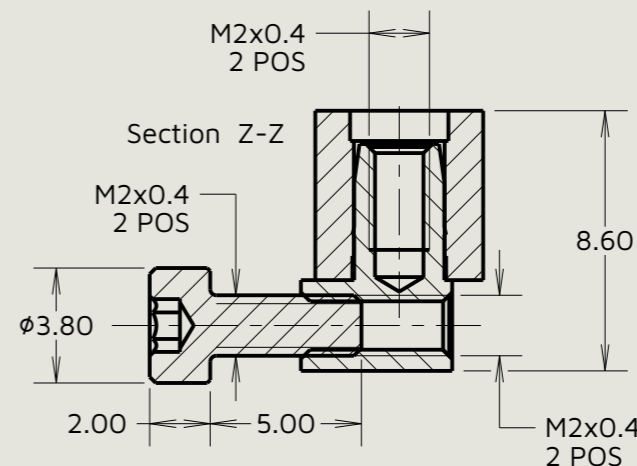
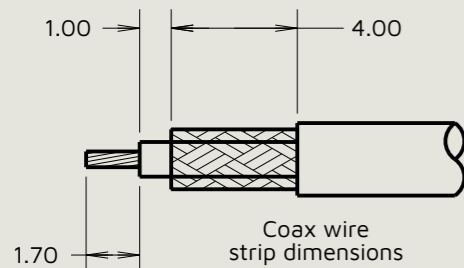
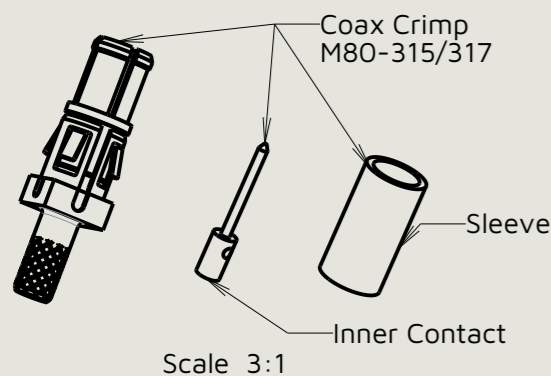
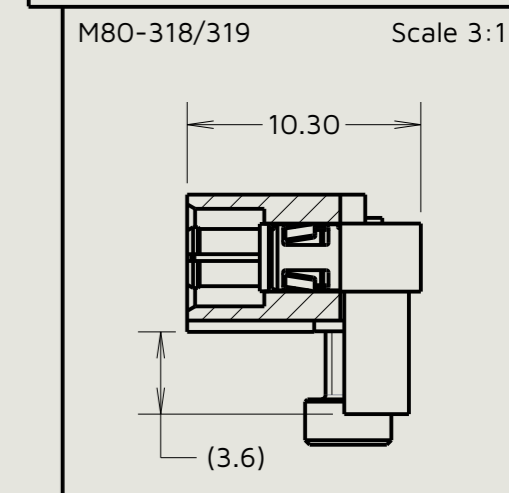
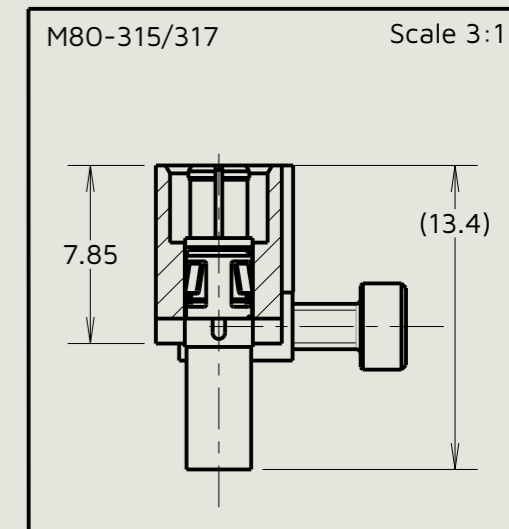
For Complete Specification See Component

Specification C005XX (Latest Issue)

Coax Crimp Contacts Only



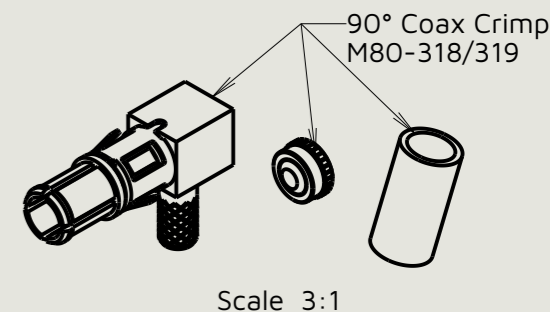
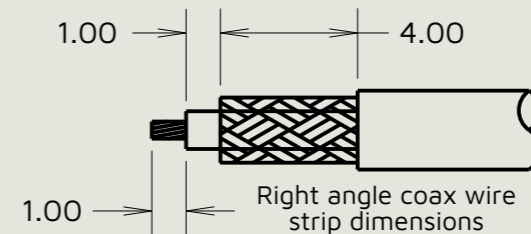
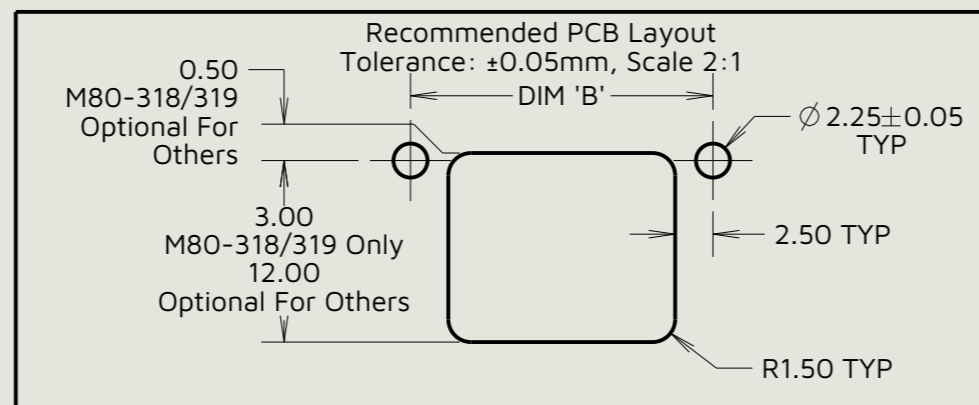
Dimension	Calculation
DIM 'A'	4 x No. of Contacts - 4.00
DIM 'B'	4 x No. of Contacts + 5.00
DIM 'C'	4 x No. of Contacts + 10.0



Order Code:
M80-5000000M7-XX-XXX-00-000

Total No. of Contacts: 02 To 12

Special Contacts:
 315 = Coax Contact 2.00mm Crimp M80-315
 317 = Coax Contact 2.70mm Crimp M80-317
 318 = Coax Contact 2.00mm Right-Angle Crimp M80-318
 319 = Coax Contact 2.70mm Right-Angle Crimp M80-319



Notes:

- Connectors are supplied with Contacts and Screws loose.
- Coax Contact is supplied as a kit of parts: Body, Main Insulator, Inner contact and Latching Collar are pre-assembled, Sleeve and Insulated End Plug assembly are separate.
- For extra Coax Contacts, use part numbers M80-315/317 318/319.
- Coax Contact extraction tool = Z80-290.
- Recommended hand crimp tool for inner Coax Contact = Z80-292 with positioner Z80-291. Recommended hand crimp tool and die set for sleeve = Z80-293.
- Instruction sheets are available.
- Special contact are hidden for visualisation purposes only.
- M80-5000000M7-06-XXX-00-000 is shown for illustrative purposes only, see order code for variants.

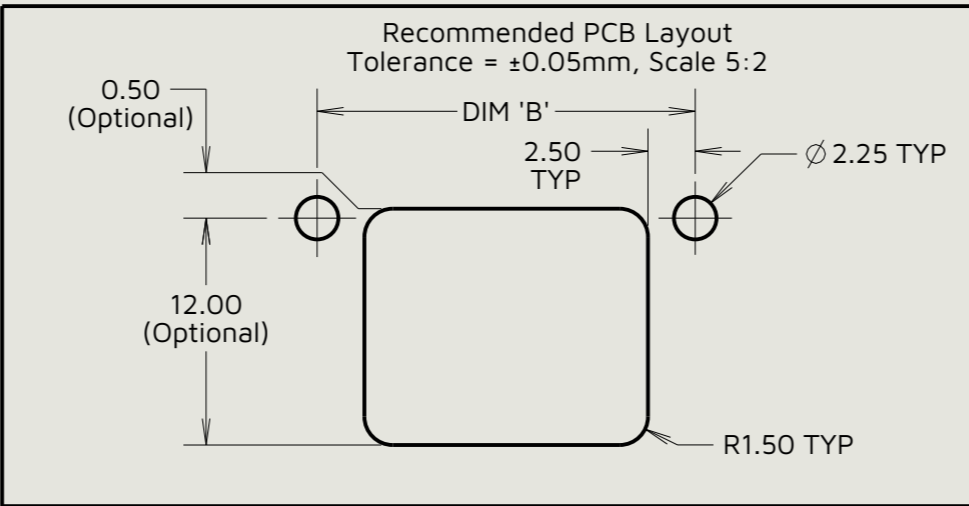
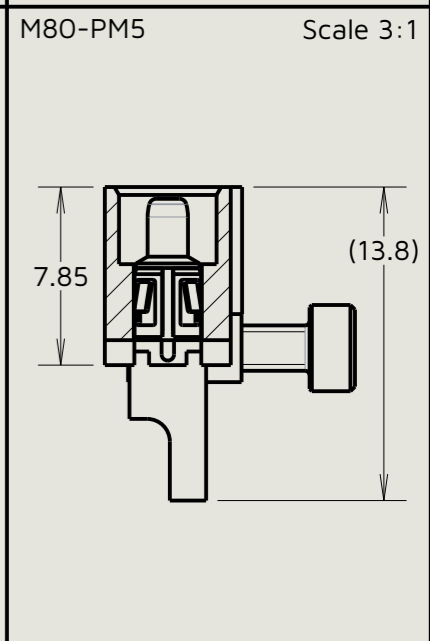
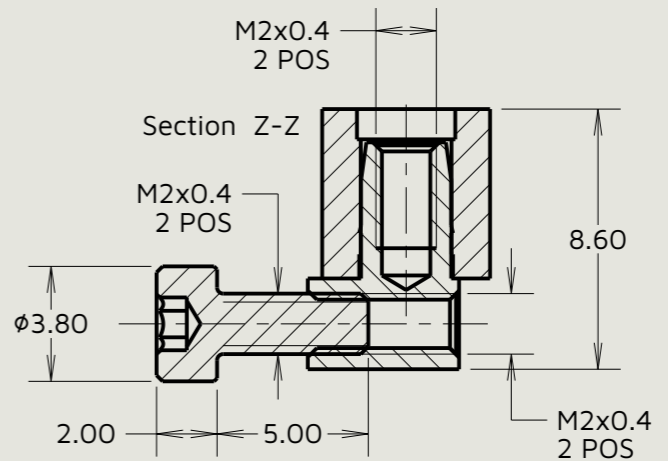
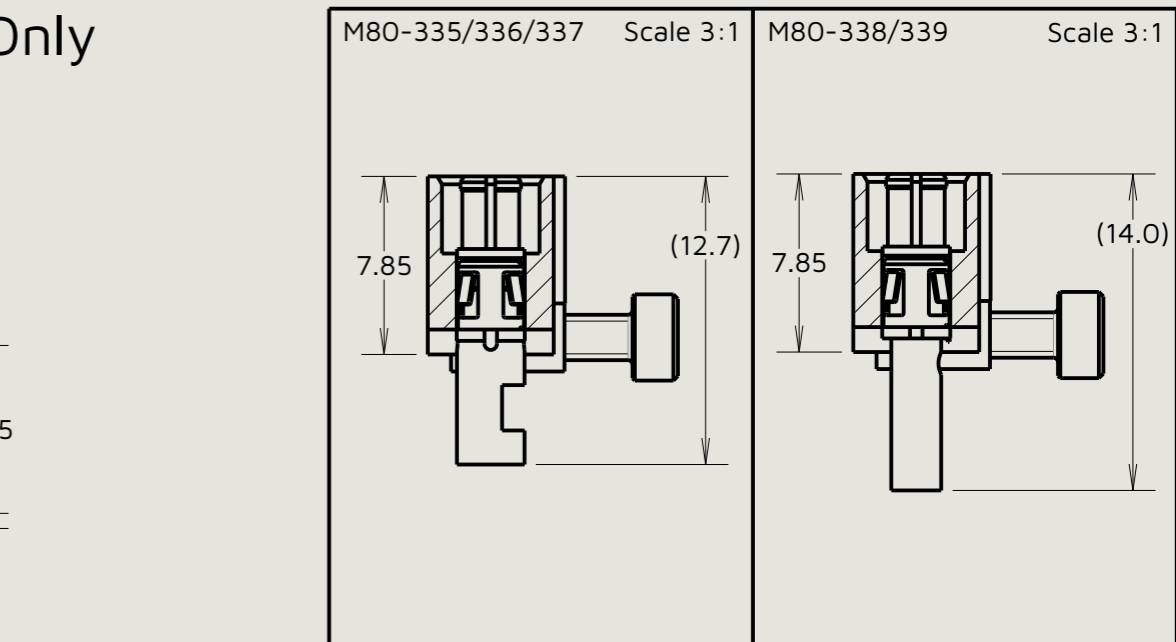
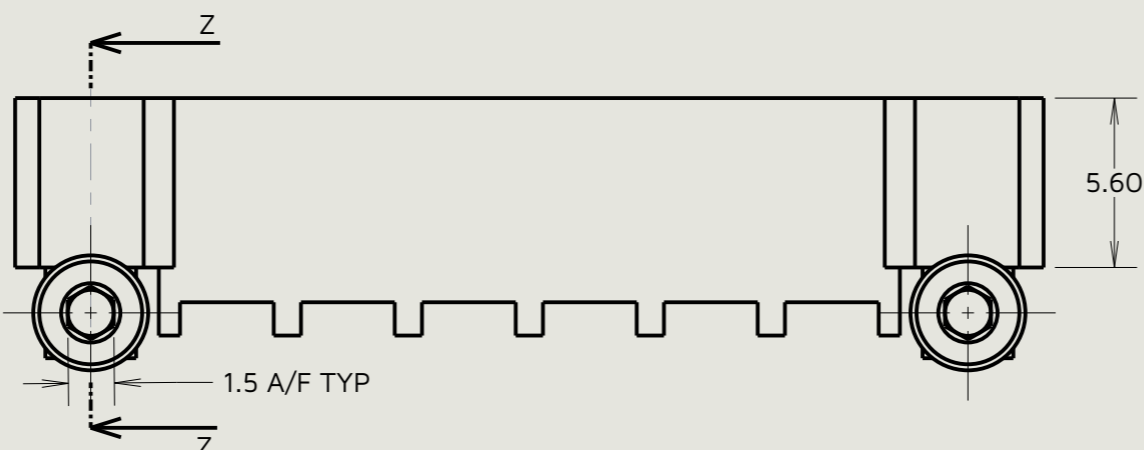
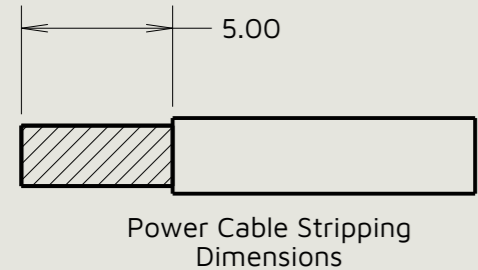
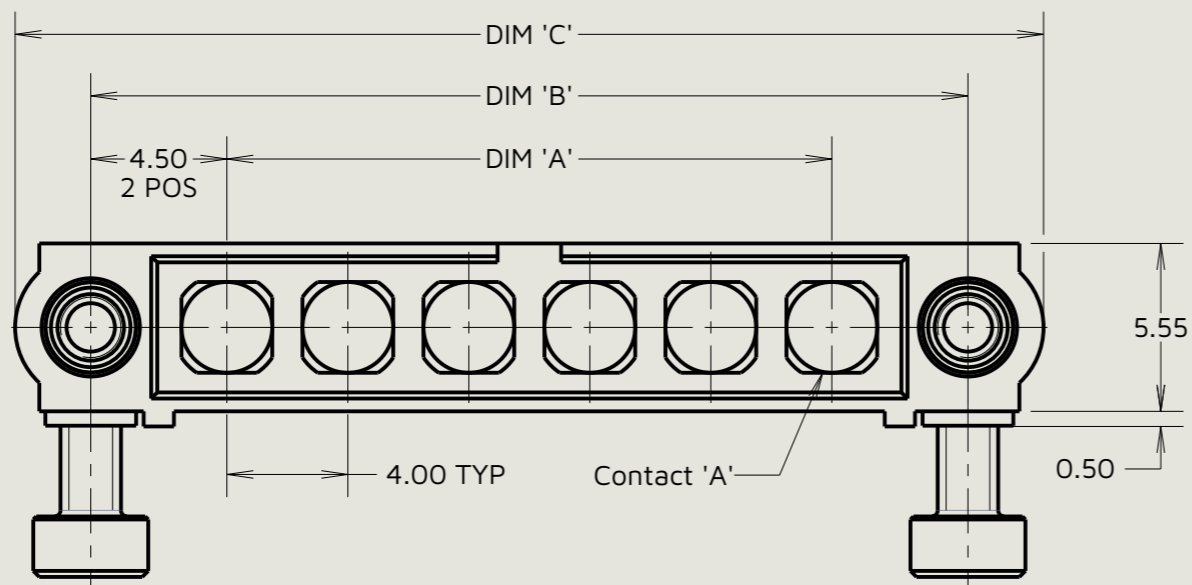
MJ	8	28.01.26	37709
Initials	Rev.	Date	CO
SF	1	12.10.10	----

<p>www.harwin.com</p>	<p>This drawing and any information or descriptive matter set out hereon are confidential and copyright property of the Harwin group and must not be disclosed, loaned, copied or used for manufacturing, tendering or for any other purpose without their written permission.</p>	<p>TOLERANCES</p> <p>X. = ±0.50mm X.X = ±0.30mm X.XX = ±0.10mm X.XXX = ±0.01mm Angles = ±5°</p> <p>Unless stated</p>	<p>Third angle projection</p>	<p>MATERIAL:</p> <p>See Specifications</p>	<p>Title:</p> <p>Datamate Mix-Tek Male Right-Angle Hex Socket Board Mount Connector</p>
				<p>Sheet scale: 4:1 Do not scale Sheet size: A3</p>	<p>FINISH:</p> <p>See Specifications</p>

Customer Information Sheet

Power Crimp & Solder Contacts Only

Specifications:
 Material:
 Housing: Glass Filled PPS, UL94V-0, Black
 Power Contact:
 Body, Sleeve, Inner Contact, End Plug = Copper Alloy
 Latching Collar = Beryllium Copper
 Insulator = PTFE
 Board Mount Jackscrew, Screw = Stainless Steel
 Finish:
 Power Contact:
 Body, Sleeve, Inner Contact, End Plug = Gold
 Latching Collar = Nickel
 Packing:
 Bag
 For Complete Specification See Component Specification C005XX (Latest Issue)



Dimension	Calculation
DIM 'A'	4 x No. of Contacts - 4.00
DIM 'B'	4 x No. of Contacts + 5.00
DIM 'C'	4 x No. of Contacts + 10.0

Order Code:
M80-5000000M7-XX-XXX-00-000
 Total No. of Contacts: _____
 02 To 12
 Special Contacts: _____
 335 = Power Contact 12AWG Solder M80-335
 336 = Power Contact 14AWG Solder M80-336
 337 = Power Contact 16AWG Solder M80-337
 338 = Power Contact 18AWG Solder/Crimp M80-338
 339 = Power Contact 20AWG Solder/Crimp M80-339
 PM5 = Power Contact 10AWG Solder M80-PM5

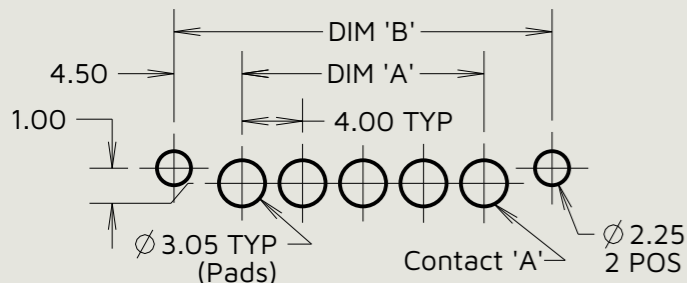
MJ	8	28.01.26	37709
Initials	Rev.	Date	CO
SF	1	12.10.10	-----

Notes:
 1. Connectors are supplied with contacts and screws loose.
 2. For extra power contacts use part numbers M80-335/336/337/338/339/PM5.
 3. Power contact extraction tool = Z80-290
 4. Recommended hand crimp tool for contacts M80-338/339 = Z80-294 and positioner Z80-295.
 5. Instruction sheets are available.
 6. M80-5000000M7-06-XXX-00-000 is shown for illustrative purposes only, see order code for variants.

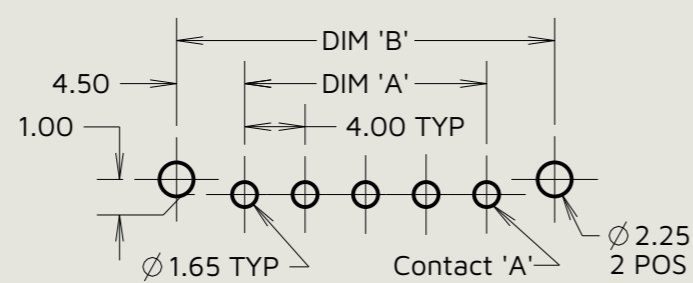
 www.harwin.com	This drawing and any information or descriptive matter set out hereon are confidential and copyright property of the Harwin group and must not be disclosed, loaned, copied or used for manufacturing, tendering or for any other purpose without their written permission.	TOLERANCES X. = ±0.50mm X.X = ±0.30mm X.XX = ±0.10mm X.XXX = ±0.01mm Angles = ±5° Unless stated	Third angle projection Sheet scale: 4:1 Do not scale Sheet size: A3	MATERIAL: See Specifications	Title: Datamate Mix-Tek Male Right-Angle Hex Socket Board Mount Connector
		FINISH: See Specifications	Drawing number: M80-5000000M7-XX-XXX-00-000	SHT 5 OF 6	

Customer Information Sheet

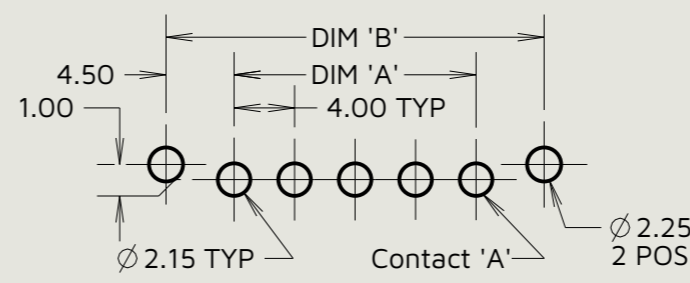
Recommended PCB Layout For
SMT Contact: M80-33A, Tolerance = ±0.05mm,
Solder Pads Shown Below, Scale 3:1



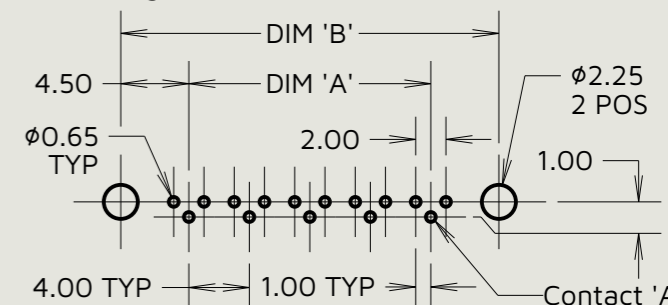
Recommended PCB Layout For
Power Contacts: M80-333/334, Tolerance = ±0.05mm,
Through Holes Shown Below, Scale 3:1



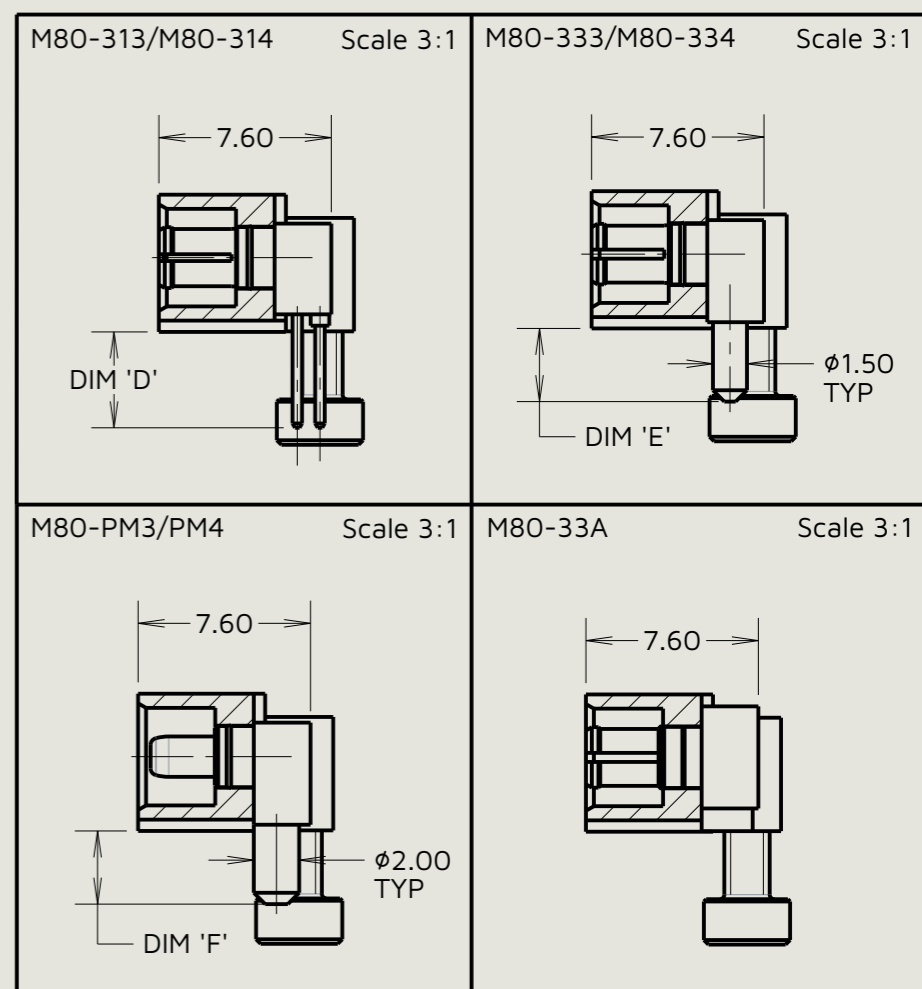
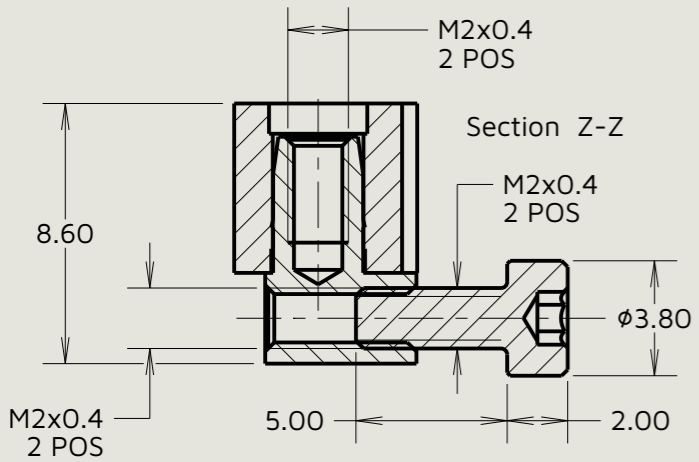
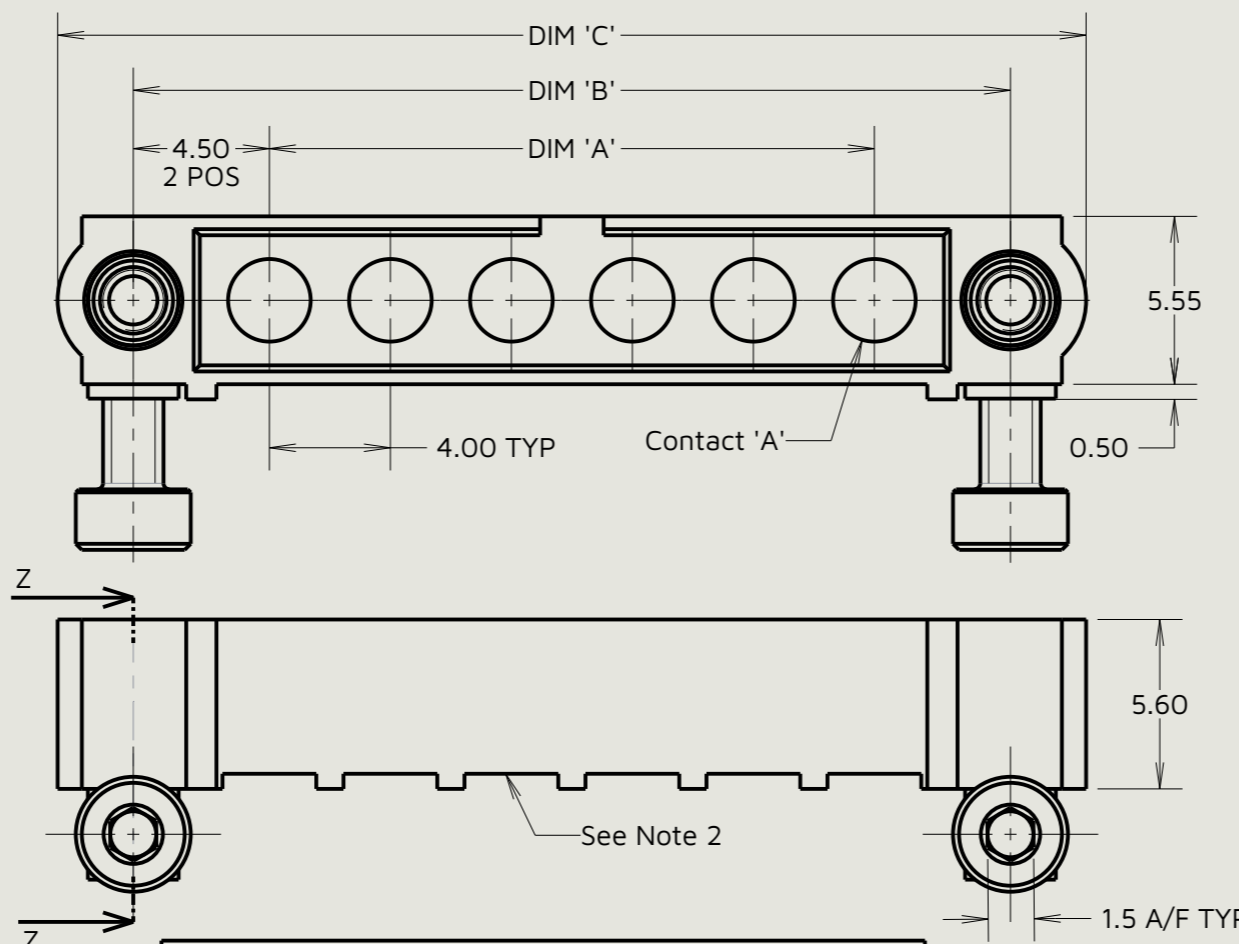
Recommended PCB Layout For
Power Contacts: M80-PM3/PM4, Tolerance = ±0.05mm,
Through Holes Shown Below, Scale 3:1



Recommended PCB Layout For
Coax Contact: M80-313/314, Tolerance = ±0.05mm,
Through Holes Shown Below, Scale 3:1



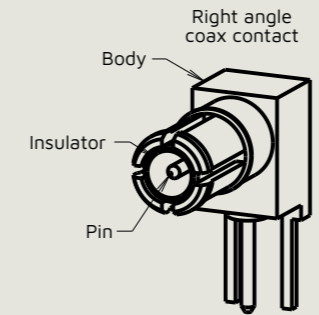
Specifications:
Material:
Housing: Glass Filled PPS, UL94V-0, Black
Power Contact: Copper Alloy
Coax Contact:
Body = Copper Alloy
Inner Contact = Copper Alloy
Insulator = PTFE
Jackscrew, Screw = Stainless Steel
Finish:
Power Contact: Gold
Coax Contact: Body, Inner Contact = Gold
Packing:
Tube
For Complete Specification See Component
Specification C005XX (Latest Issue)



Order Code: (PC Tail Contacts Only)
M80-5000000M7-XX-XXX-00-000

Total No. of Contacts: _____
02 To 12

Special Contacts:
313 = Coax Contact 3.0mm PC Tail M80-313
314 = Coax Contact 4.5mm PC Tail M80-314
333 = 20A Power Contact 3.5mm Right-Angle PC Tail M80-333
334 = 20A Power Contact 5.0mm Right-Angle PC Tail M80-334
PM3 = 40A Power Contact 3.5mm Right-Angle PC Tail M80-PM3
PM4 = 40A Power Contact 5.0mm Right-Angle PC Tail M80-PM4
33A = Power Contact Right-Angle SMT M80-33A

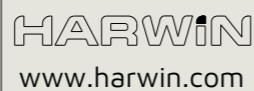


Right-Angle PC Tail & SMT Contacts Only

Dimension	Calculation
DIM 'A'	4 x No. of Contacts - 4.00
DIM 'B'	4 x No. of Contacts + 5.00
DIM 'C'	4 x No. of Contacts + 10.0
DIM 'D'	M80-313 = 2.7mm, M80-314 = 4.2mm
DIM 'E'	M80-333 = 3.2mm, M80-334 = 4.7mm
DIM 'F'	M80-PM3 = 3.2mm, M80-PM4 = 4.7mm

MJ	8	28.01.26	37709
Initials	Rev.	Date	CO
SF	1	12.10.10	-----

Notes:
1. M80-5000000M7-06-XXX-00-000 is shown for illustrative purposes only, see order code for variants.
2. Contacts are hidden for visualisation purposes.



This drawing and any information or descriptive matter set out hereon are confidential and copyright property of the Harwin group and must not be disclosed, loaned, copied or used for manufacturing, tendering or for any other purpose without their written permission.

TOLERANCES
X. = ±0.50mm
X.X = ±0.30mm
X.XX = ±0.10mm
X.XXX = ±0.01mm
Angles = ±5°
Unless stated

Third angle projection
 Sheet scale: 4:1
Do not scale
Sheet size: A3

MATERIAL:
See Specifications
FINISH:
See Specifications

Title:
Datamate Mix-Tek Male Right-Angle Hex Socket Board Mount Connector
Drawing number:
M80-5000000M7-XX-XXX-00-000