

Customer Information Sheet

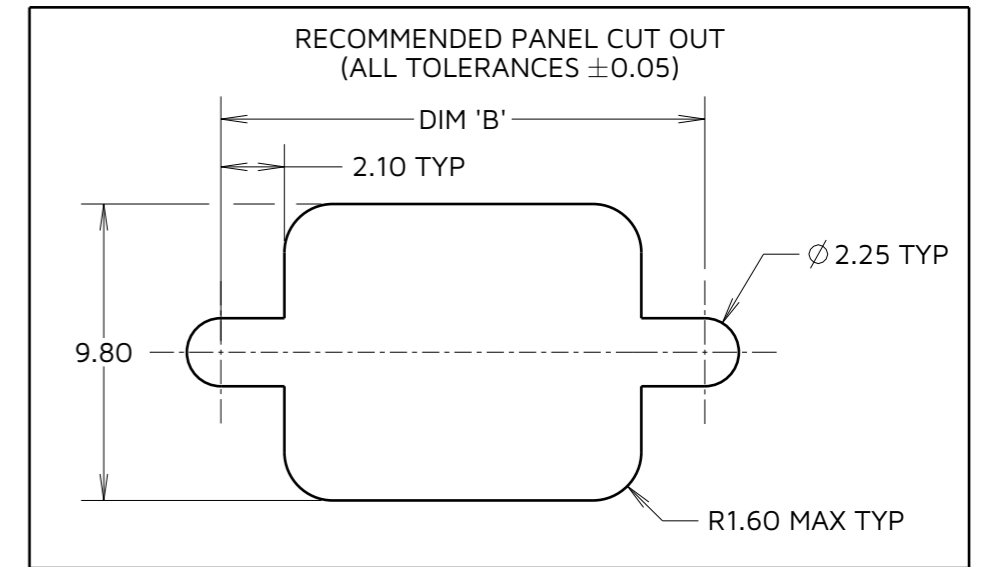
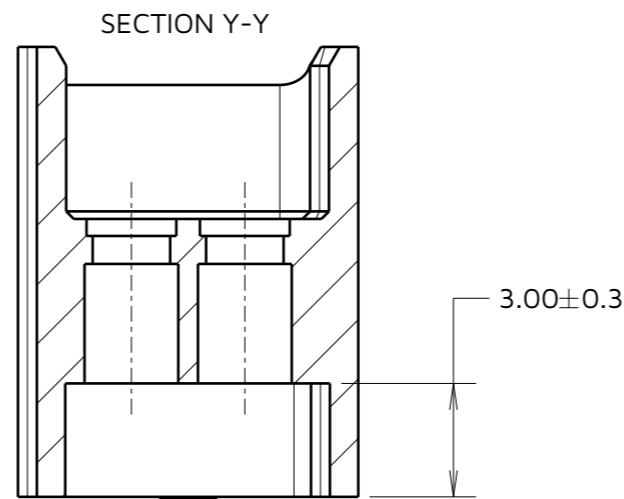
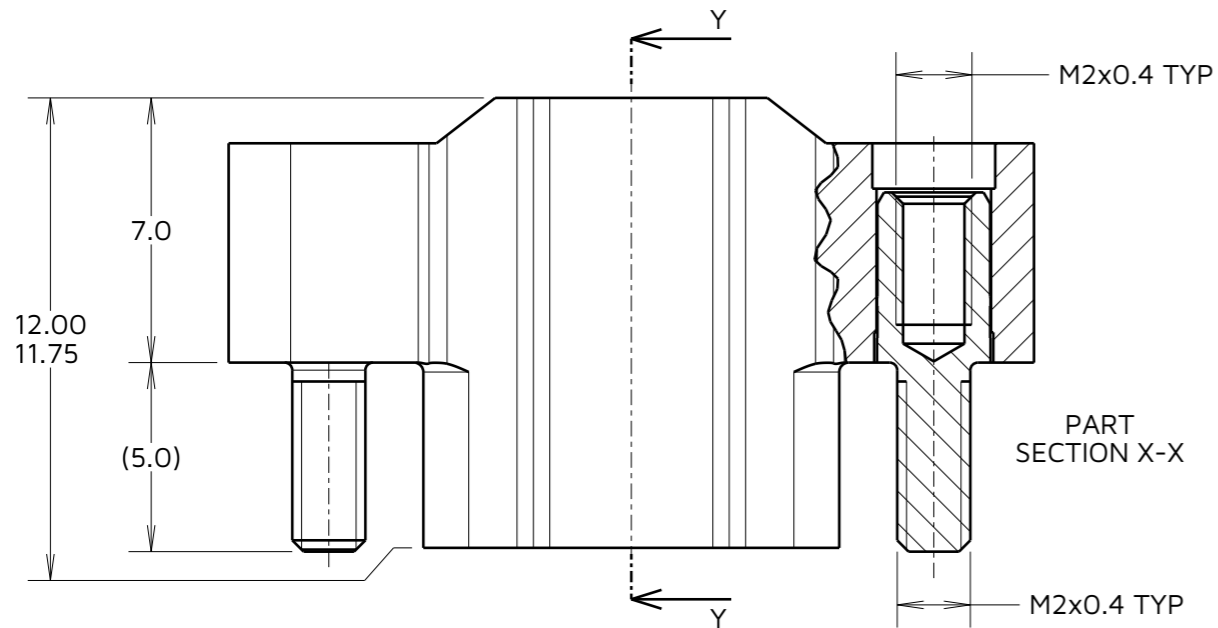
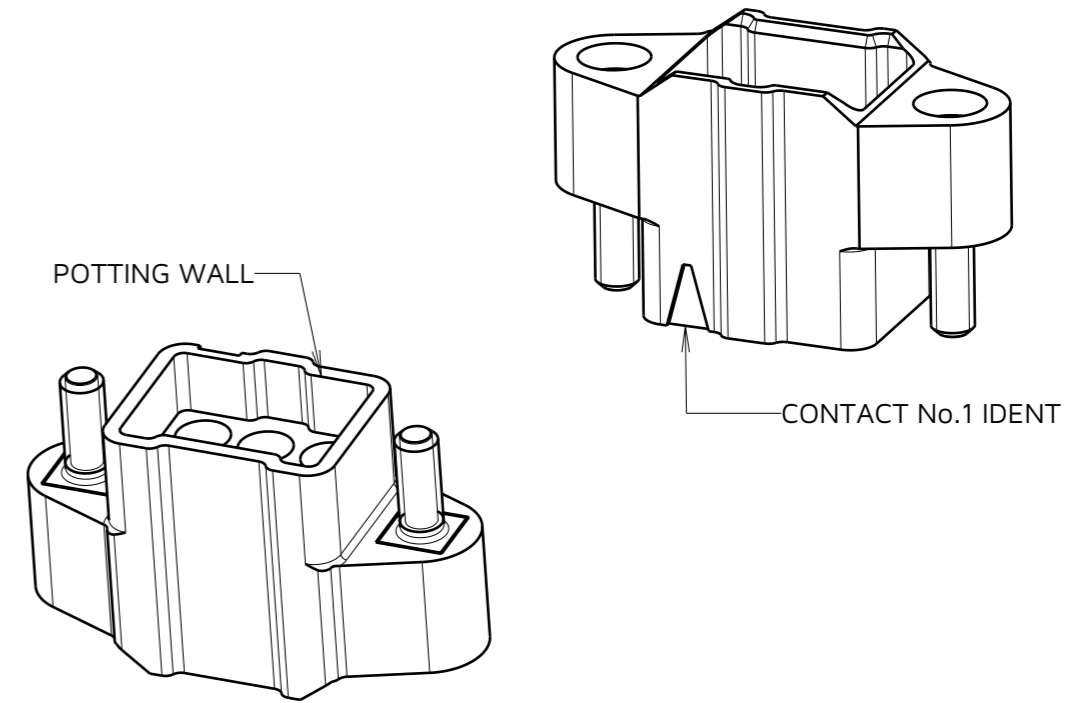
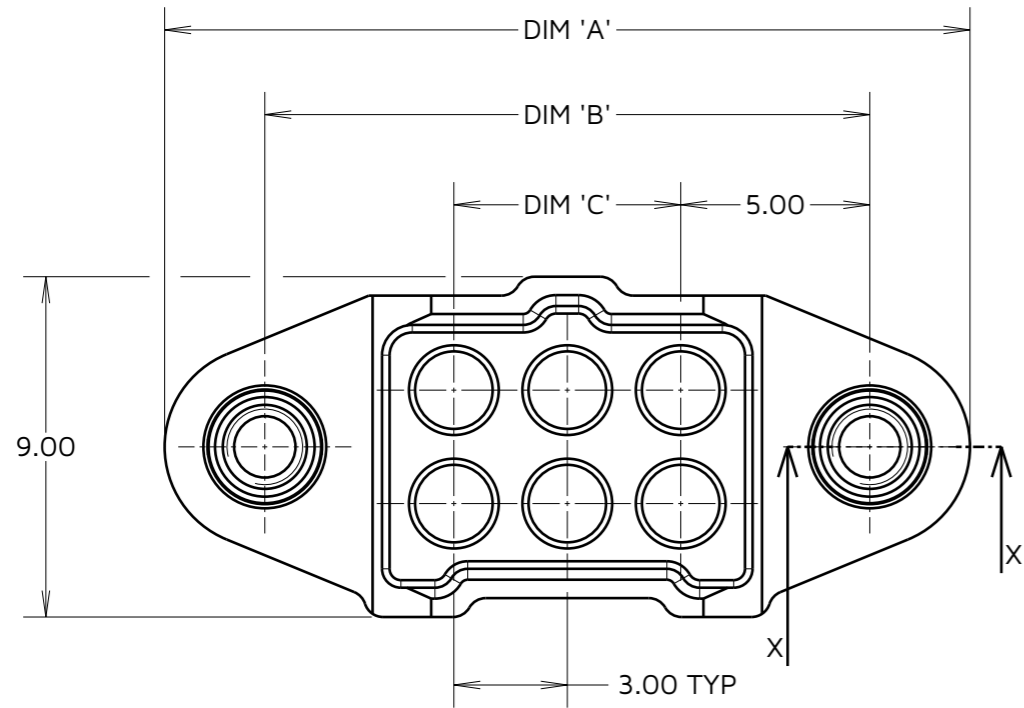
IF IN DOUBT - ASK



NOT TO SCALE

THIRD ANGLE PROJECTION

ALL DIMENSIONS IN mm



PART No.	DIM 'A'	DIM 'B'	DIM 'C'
M300-3240696M2	21.3	16.0	6.00
M300-3241096M2	27.3	22.0	12.00

ORDER CODE:
M300-324XX96M2
TOTAL No. OF CONTACTS 06, 10

- NOTES:
- FOR USE WITH M300-1010045 & M300-1020045 CONTACTS (NOT INCLUDED).
 - SEE COMPONENT SPECIFICATION CO48XX (LATEST ISSUE) FOR PRODUCT SPECIFICATION AND WIRING/CRIMPING ASSEMBLY INSTRUCTIONS.
 - SLOTTED NUTS M80-2130000B OR HEXAGONAL NUTS M80-2430000B FOR PANEL MOUNTING TO BE ORDERED SEPARATELY.

RTP	3	05.12.24	35312
NAME	ISS.	DATE	CN/CO
APPROVED: R.PORTLOCK			
CHECKED: A.BOXALL			
DRAWN: M.RUDKIN			

HARWIN

www.harwin.com

TOLERANCES
X. = ±1mm
X.X = ±0.50mm
X.XX = ±0.20mm
X.XXX = ±0.01mm
ANGLES = ±5°
UNLESS STATED

THIS DRAWING AND ANY INFORMATION OR DESCRIPTIVE MATTER SET OUT HEREON ARE CONFIDENTIAL AND COPYRIGHT PROPERTY OF THE HARWIN GROUP AND MUST NOT BE DISCLOSED, LOANED, COPIED OR USED FOR MANUFACTURING, TENDERING OR FOR ANY OTHER PURPOSE WITHOUT THEIR WRITTEN PERMISSION.

MATERIAL & FINISH:
SEE ABOVE

TITLE: 1mm POWER CONNECTOR DIL CRIMP HOUSING WITH POTTING WALL MALE ASSEMBLY

DRAWING NUMBER:
M300-324XX96M2

SHT 2 OF 2