

# Customer Information Sheet

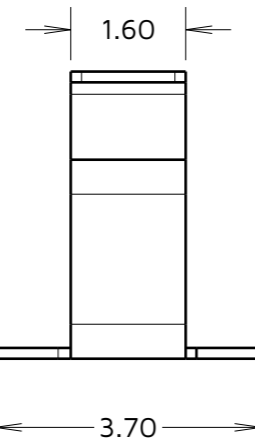
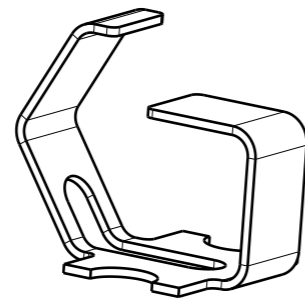
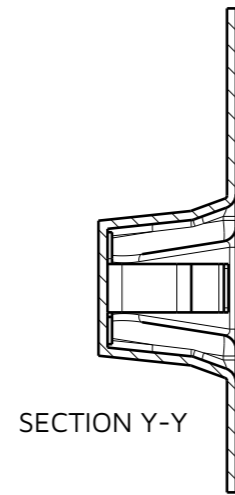
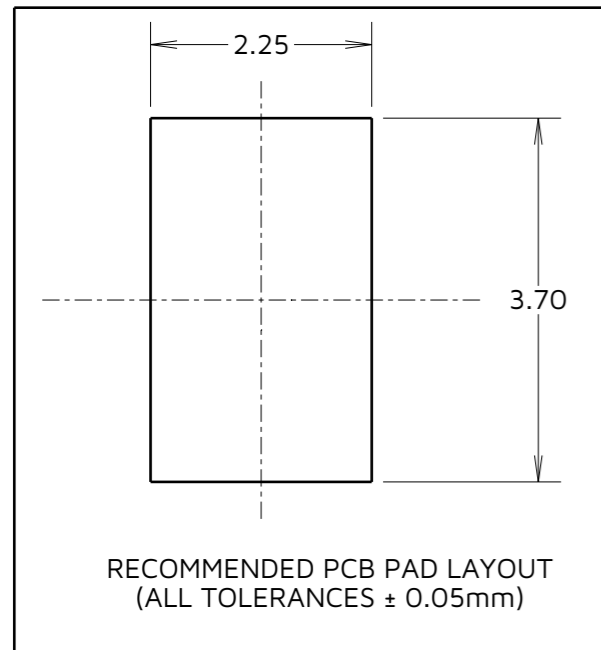
IF IN DOUBT - ASK

©

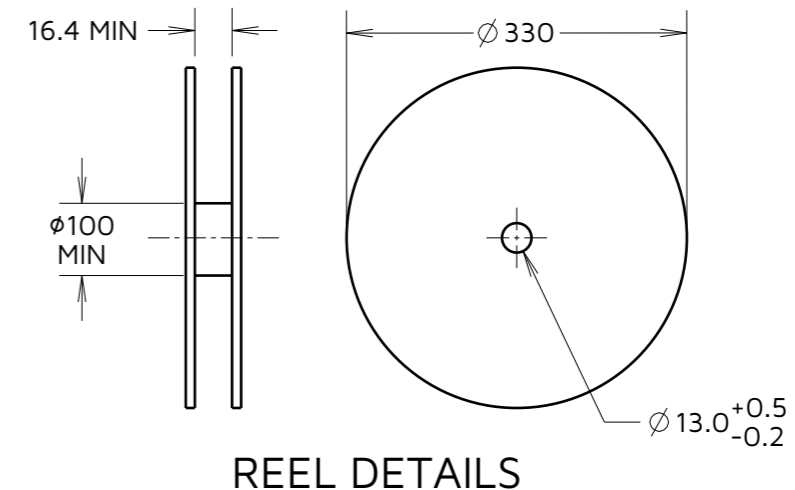
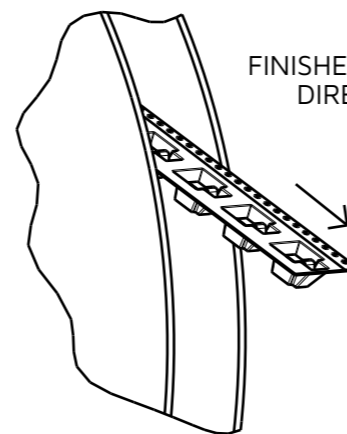
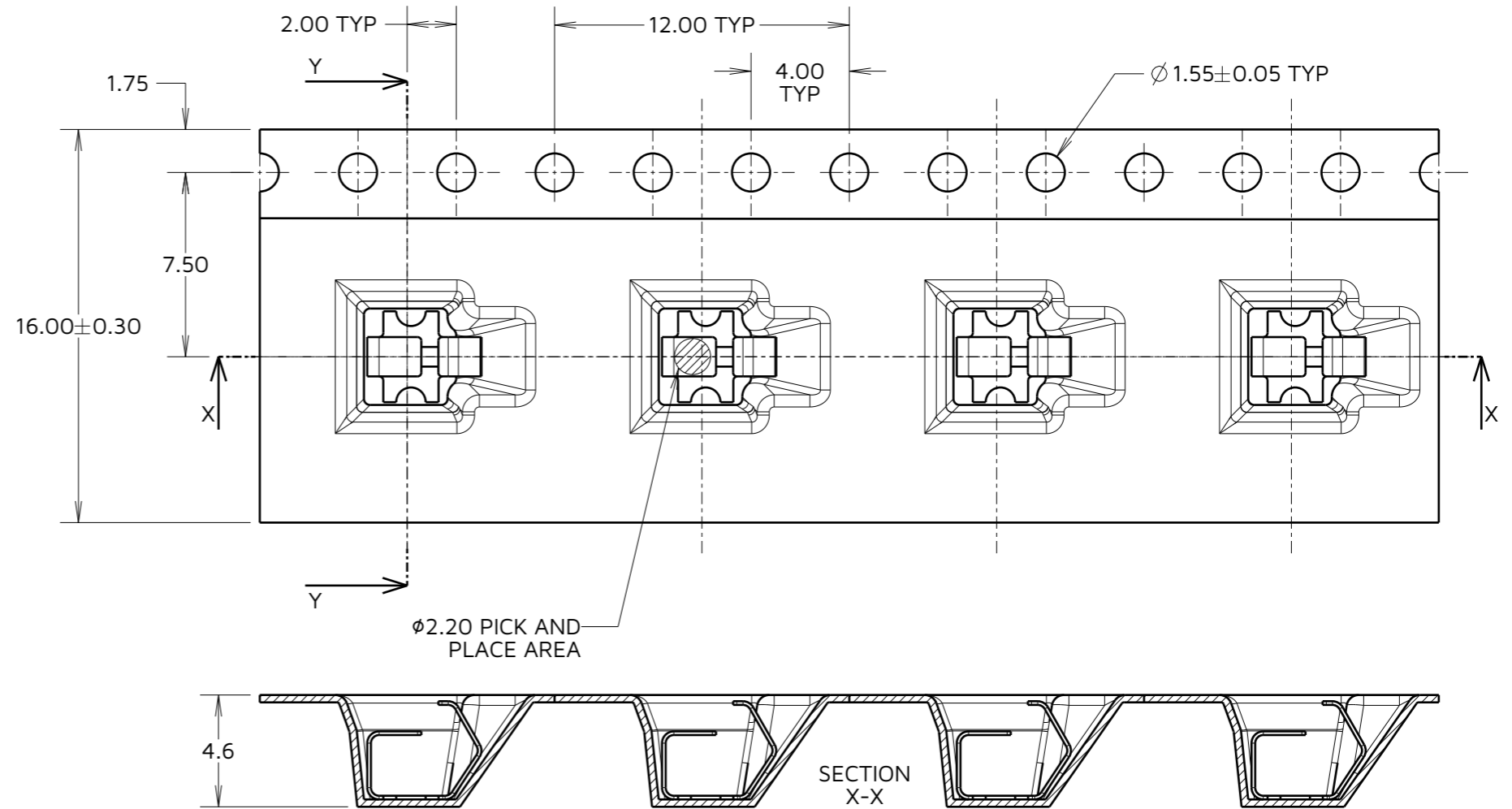
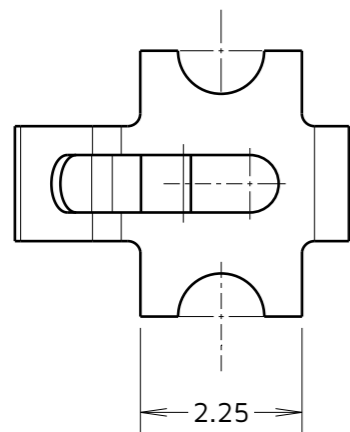
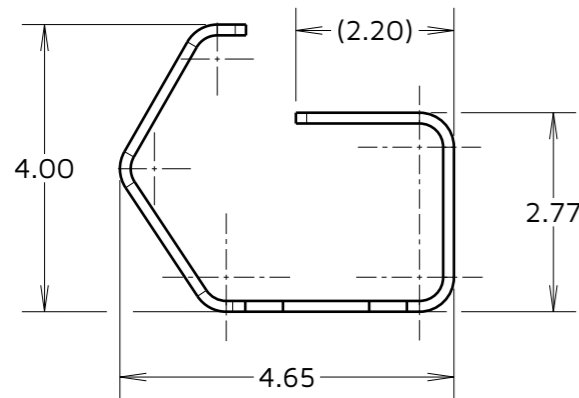
NOT TO SCALE

THIRD ANGLE PROJECTION

ALL DIMENSIONS IN mm



COMPONENT DETAILS



NOTES:

1. QUANTITY OF COMPONENTS PER REEL = 1,100 PCS.
2. THIS PRODUCT IS TAPED AND REELED IN ACCORDANCE WITH EIA-481 (ELECTRONICS INDUSTRIES ASSOCIATION).
3. SEE COMPONENT SPEC C055XX FOR FULL SPECIFICATION (LATEST ISSUE).
4. SEE SHEET 3 FOR RECOMMENDED DEFLECTION DIMENSIONS.

RA	3	04.02.25	35675
NAME	ISS.	DATE	CN/CO
APPROVED:		R.ALEXANDER	
CHECKED:		R.PORTLOCK	
DRAWN:		R.PORTLOCK	

**HARWIN**

www.harwin.com

TOLERANCES  
X. =  $\pm 1\text{mm}$   
X.X =  $\pm 0.50\text{mm}$   
X.XX =  $\pm 0.20\text{mm}$   
X.XXX =  $\pm 0.01\text{mm}$   
ANGLES =  $\pm 5^\circ$   
UNLESS STATED

THIS DRAWING AND ANY INFORMATION OR DESCRIPTIVE MATTER SET OUT HEREON ARE CONFIDENTIAL AND COPYRIGHT PROPERTY OF THE HARWIN GROUP AND MUST NOT BE DISCLOSED, LOANED, COPIED OR USED FOR MANUFACTURING, TENDERING OR FOR ANY OTHER PURPOSE WITHOUT THEIR WRITTEN PERMISSION.

MATERIAL & FINISH:  
  
SEE SHEET 3

TITLE:  
**MULTI-DIRECTIONAL SPRING CONTACT IN TAPE AND REEL**  
DRAWING NUMBER:  
**S1921-46R**

# Customer Information Sheet

IF IN DOUBT - ASK

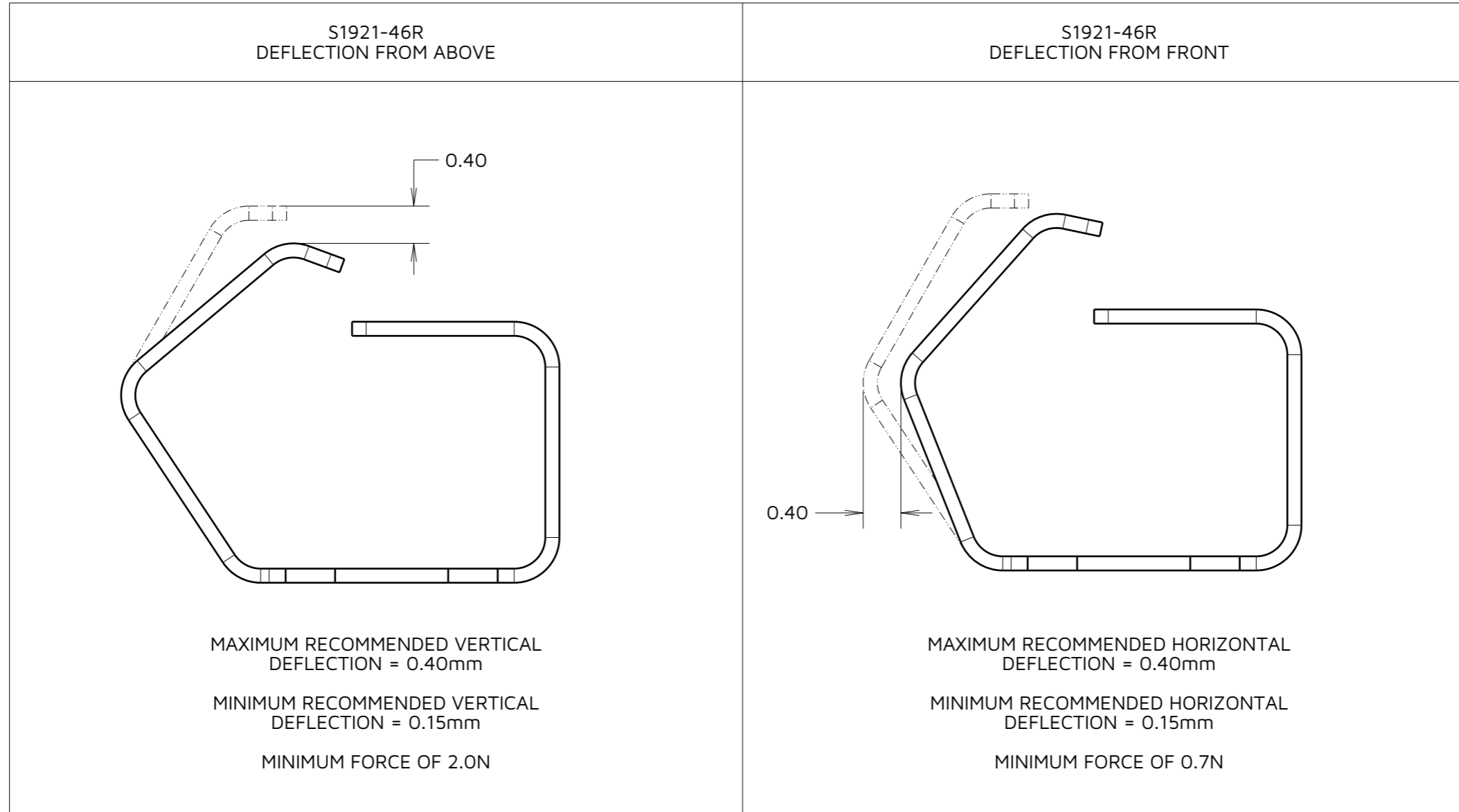
©

NOT TO SCALE

THIRD ANGLE PROJECTION

ALL DIMENSIONS IN mm

COMPONENT SPECIFICATION:  
 MATERIAL = CUPRO NICKEL  
 FINISH = 100% TIN OVER NICKEL  
 (SEE C055XX FOR FULL COMPONENT SPECIFICATION)



RA	3	04.02.25	35675
NAME	ISS.	DATE	CN/CO
APPROVED:		R.ALEXANDER	
CHECKED:		R.PORTLOCK	
DRAWN:		R.PORTLOCK	

**HARWIN**

www.harwin.com

TOLERANCES  
 X. = ±1mm  
 X.X = ±0.50mm  
 X.XX = ±0.20mm  
 X.XXX = ±0.01mm  
 ANGLES = ±5°  
 UNLESS STATED

THIS DRAWING AND ANY INFORMATION OR DESCRIPTIVE MATTER SET OUT HEREON ARE CONFIDENTIAL AND COPYRIGHT PROPERTY OF THE HARWIN GROUP AND MUST NOT BE DISCLOSED, LOANED, COPIED OR USED FOR MANUFACTURING, TENDERING OR FOR ANY OTHER PURPOSE WITHOUT THEIR WRITTEN PERMISSION.

MATERIAL & FINISH:  
  
SEE ABOVE

TITLE:  
**MULTI-DIRECTIONAL SPRING CONTACT IN TAPE AND REEL**

DRAWING NUMBER:  
**S1921-46R**

SHT  
3  
OF  
3