

Customer Information Sheet

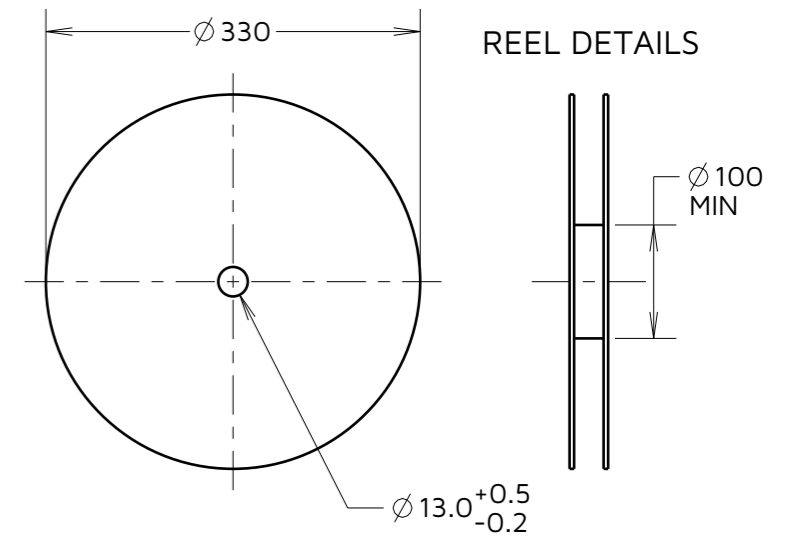
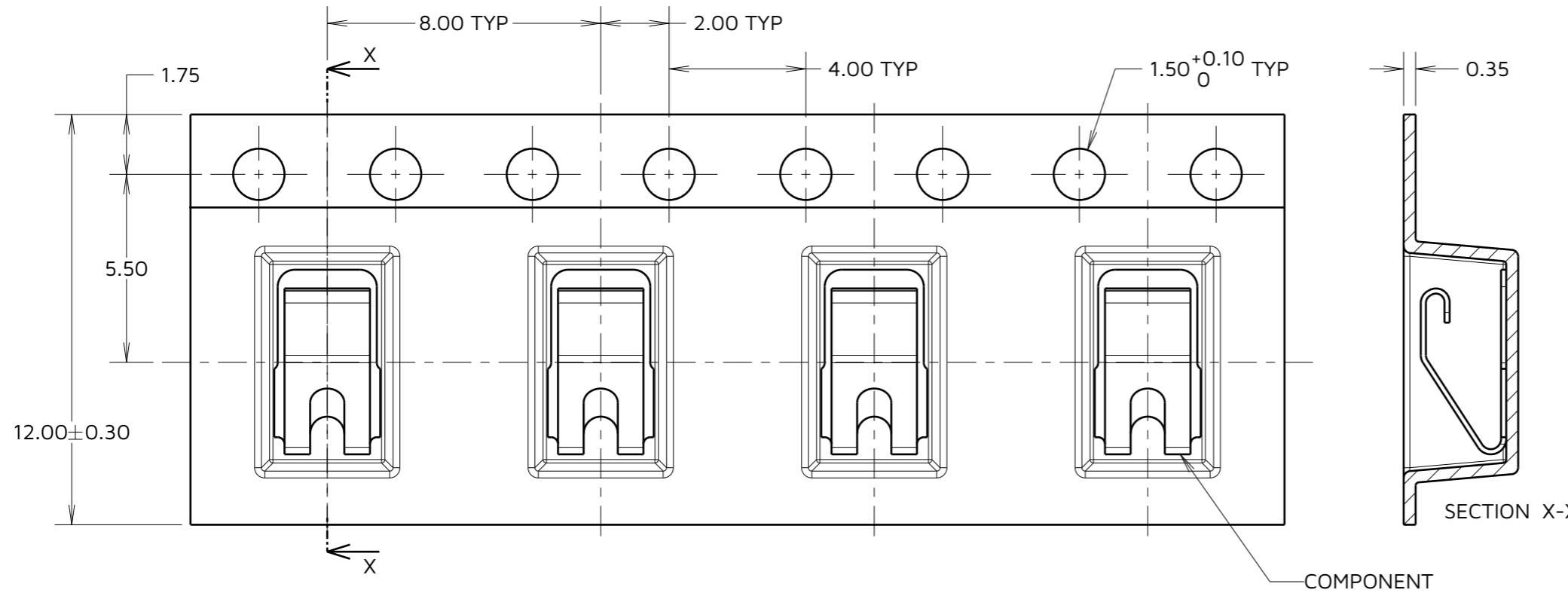
IF IN DOUBT - ASK

©

NOT TO SCALE

THIRD ANGLE PROJECTION

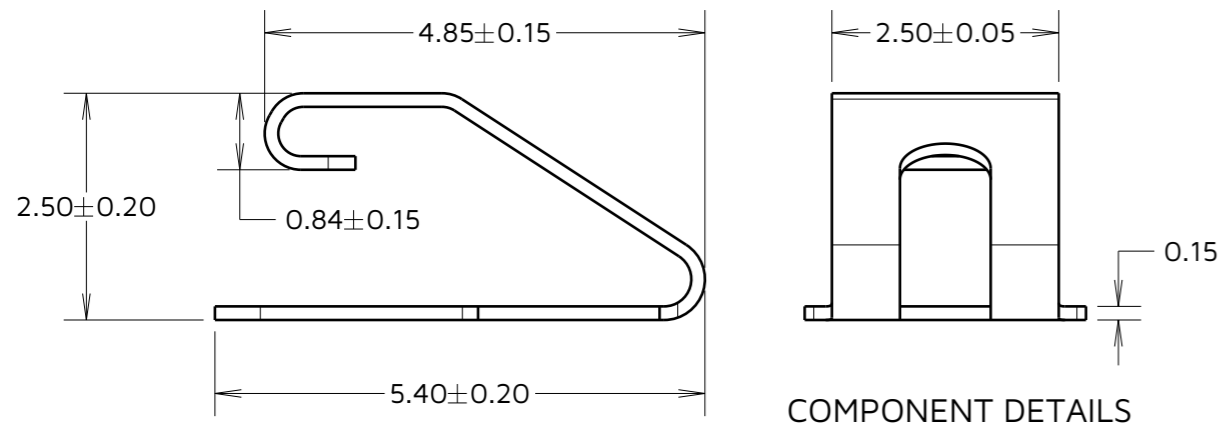
ALL DIMENSIONS IN mm



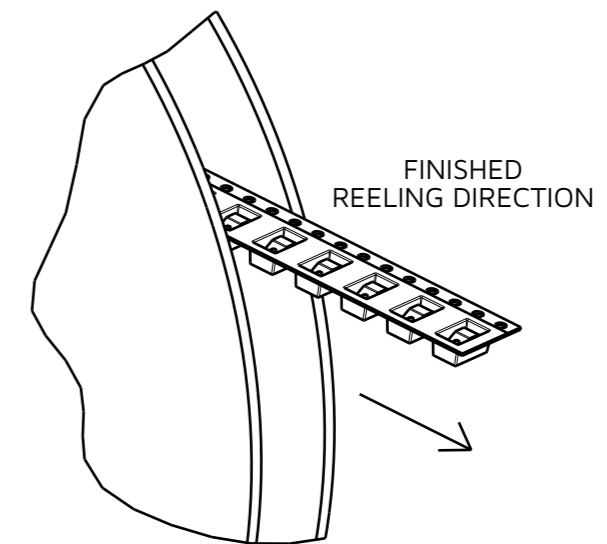
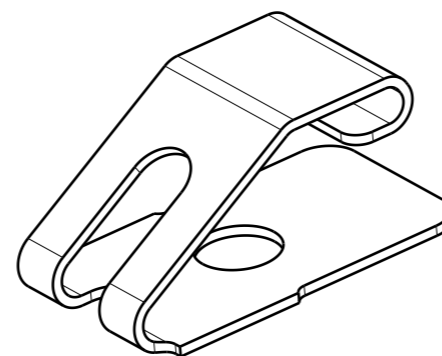
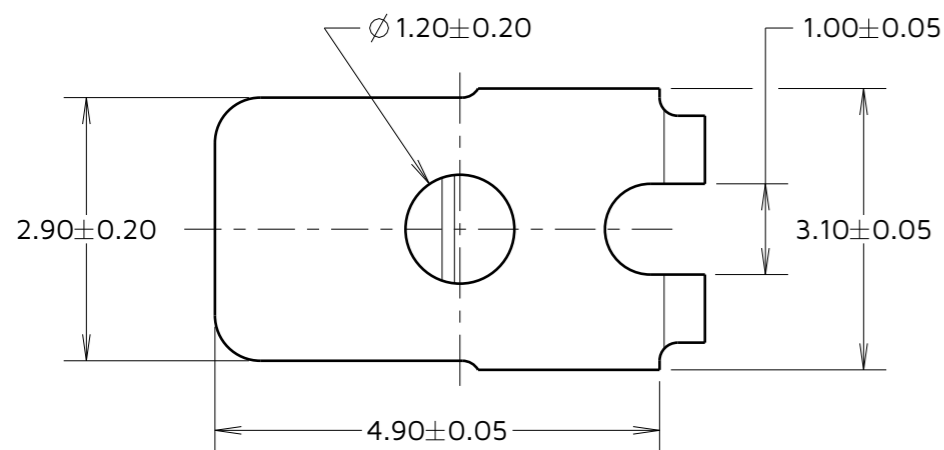
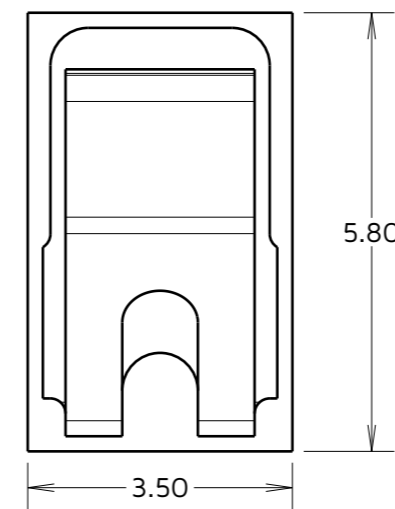
COMPONENT SPECIFICATION:
 MATERIAL = PHOSPHOR BRONZE
 FINISH = 4µm BRIGHT 100% TIN OVER 2µm NICKEL
 MAX PERMISSIBLE BURR = 0.05mm

RECOMMENDED WORKING HEIGHT = 1.75mm / MIN FORCE = 1.5N
 MINIMUM WORKING HEIGHT = 1.50mm / MAX FORCE = 3.0N

ELECTRICAL:
 CURRENT RATING = 6A
MECHANICAL:
 DURABILITY = 5000 CYCLES
ENVIRONMENTAL:
 OPERATING TEMPERATURE = -55°C TO +125°C



RECOMMENDED PAD LAYOUT



EM	5	25.09.24	34804
NAME	ISS.	DATE	CN/CO
APPROVED:		E.MUNOZ	
CHECKED:		R.ALEXANDER	
DRAWN:		N.CODLING	

NOTES:
 1. QUANTITY PER REEL = 2500.
 3. THIS PRODUCT IS TAPED AND REELED IN ACCORDANCE WITH EIA-481 (ELECTRONIC INDUSTRIES ASSOCIATION).

HARWIN
 www.harwin.com

TOLERANCES
 X. = ±1mm
 X.X = ±0.50mm
 X.XX = ±0.20mm
 X.XXX = ±0.01mm
 ANGLES = ±5°
 UNLESS STATED

THIS DRAWING AND ANY INFORMATION OR DESCRIPTIVE MATTER SET OUT HEREON ARE CONFIDENTIAL AND COPYRIGHT PROPERTY OF THE HARWIN GROUP AND MUST NOT BE DISCLOSED, LOANED, COPIED OR USED FOR MANUFACTURING, TENDERING OR FOR ANY OTHER PURPOSE WITHOUT THEIR WRITTEN PERMISSION.

MATERIAL:
 SEE ABOVE

TITLE:
 S1741-46 SMT CONTACT
 IN TAPE AND REEL
DRAWING NUMBER:
 S1741-46R