

Customer Information Sheet

IF IN DOUBT - ASK



NOT TO SCALE

THIRD ANGLE PROJECTION

ALL DIMENSIONS IN mm

SPECIFICATIONS:

MATERIAL
 CARRIER = BRASS
 CONTACT SHELL = BRASS
 CONTACT CLIP = BERYLLIUM COPPER
 FINISH: (ALL OVER NICKEL)
 SEE ORDER CODE

FOR COMPLETE SPECIFICATION, SEE COMPONENT SPECIFICATION C006XX (LATEST ISSUE)

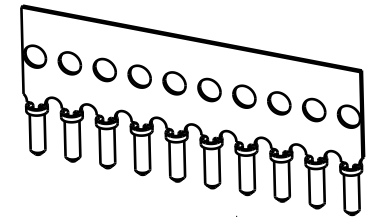
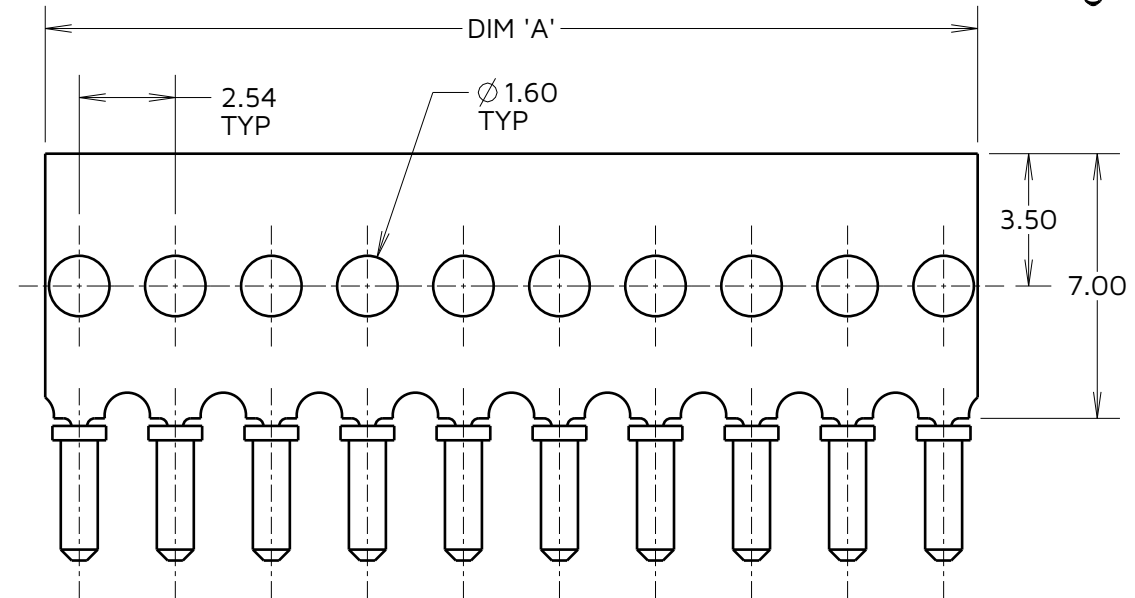
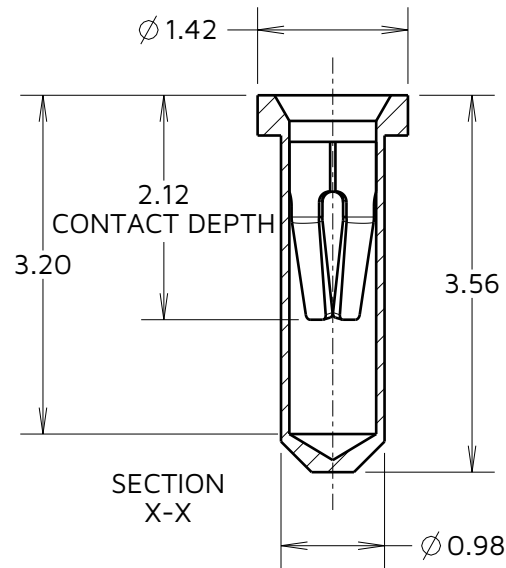


TABLE 1: DIMENSION VARIANTS	
PART No.	DIM 'A'
D01-99003XX	6.88
D01-99004XX	9.42
D01-99005XX	11.96
D01-99006XX	14.50
D01-99007XX	17.04
D01-99008XX	19.58
D01-99009XX	22.12
D01-99010XX	24.66
D01-99012XX	29.74
D01-99014XX	34.82
D01-99015XX	37.36
D01-99016XX	39.90
D01-99017XX	42.44
D01-99020XX	50.06
D01-99023XX	57.68
D01-99024XX	60.22
D01-99032XX	80.54



- NOTES:
1. RECOMMENDED HOLE SIZE = $\phi 1.10 \pm 0.05$ mm
 2. RECOMMENDED PIN DIAMETER = $\phi 0.41$ TO 0.51mm
 3. D01-99010XX SHOWN FOR ILLUSTRATION PURPOSES ONLY

ORDER CODE:

D01-990XXXX

No. OF SOCKETS _____
 04 TO 32

FINISH: _____
 01 = GOLD CLIP, TIN SHELL
 05 = GOLD CLIP, GOLD SHELL

AY	12	01.10.24	34124
NAME	ISS.	DATE	CN/CO
APPROVED: A.YEOMANS			
CHECKED:			
DRAWN: MARK G PLESTED			



www.harwin.com

TOLERANCES

X. = ± 1 mm
 X.X = ± 0.50 mm
 X.XX = ± 0.20 mm
 X.XXX = ± 0.01 mm

ANGLES = $\pm 5^\circ$
 UNLESS STATED

THIS DRAWING AND ANY INFORMATION OR DESCRIPTIVE MATTER SET OUT HEREON ARE CONFIDENTIAL AND COPYRIGHT PROPERTY OF THE HARWIN GROUP AND MUST NOT BE DISCLOSED, LOANED, COPIED OR USED FOR MANUFACTURING, TENDERING OR FOR ANY OTHER PURPOSE WITHOUT THEIR WRITTEN PERMISSION.

MATERIAL & FINISH:

SEE ABOVE

TITLE:

H3153-XX SUB-MIN SOCKETS
 ON CARRIER STRIP

DRAWING NUMBER:

D01-990XXXX

SHT
 2
 OF
 2