

# Customer Information Sheet

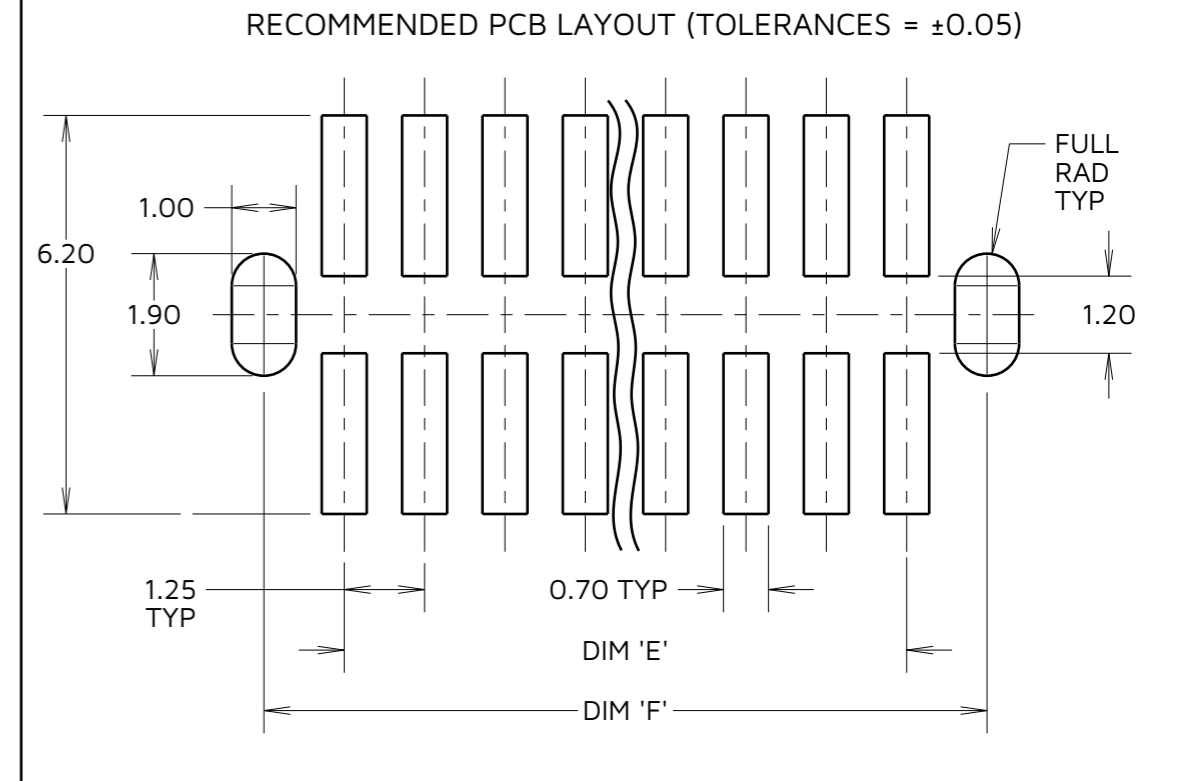
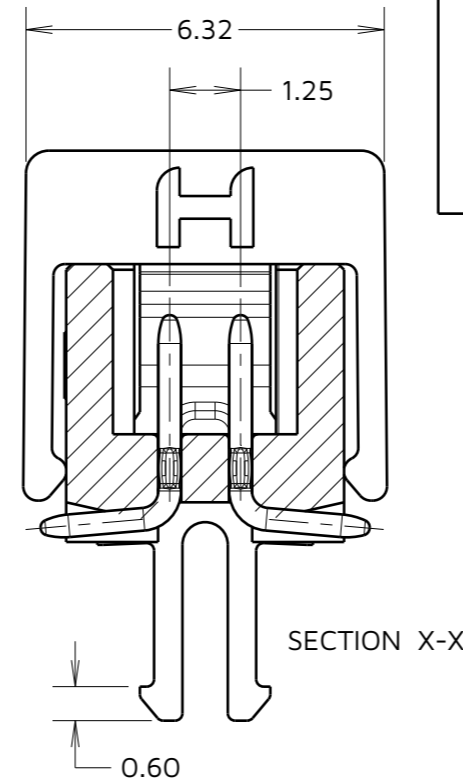
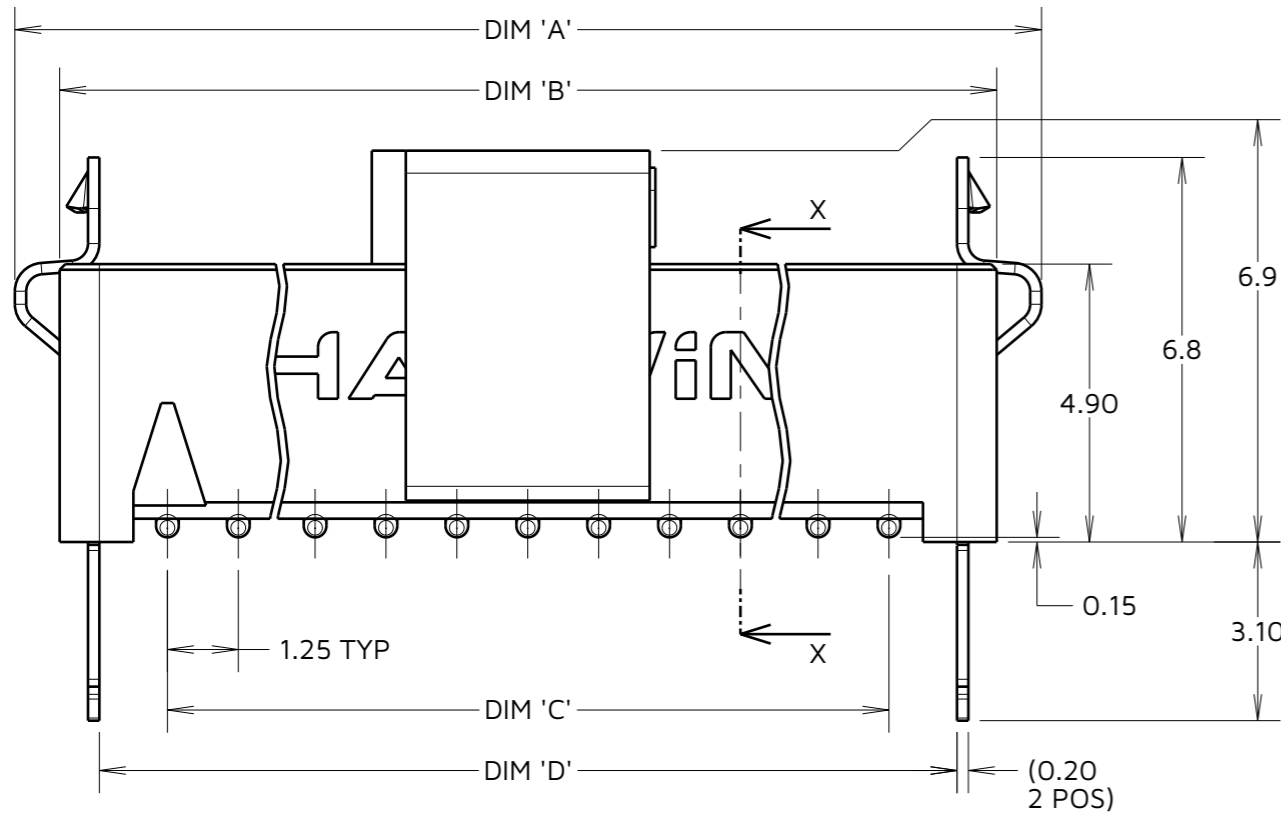
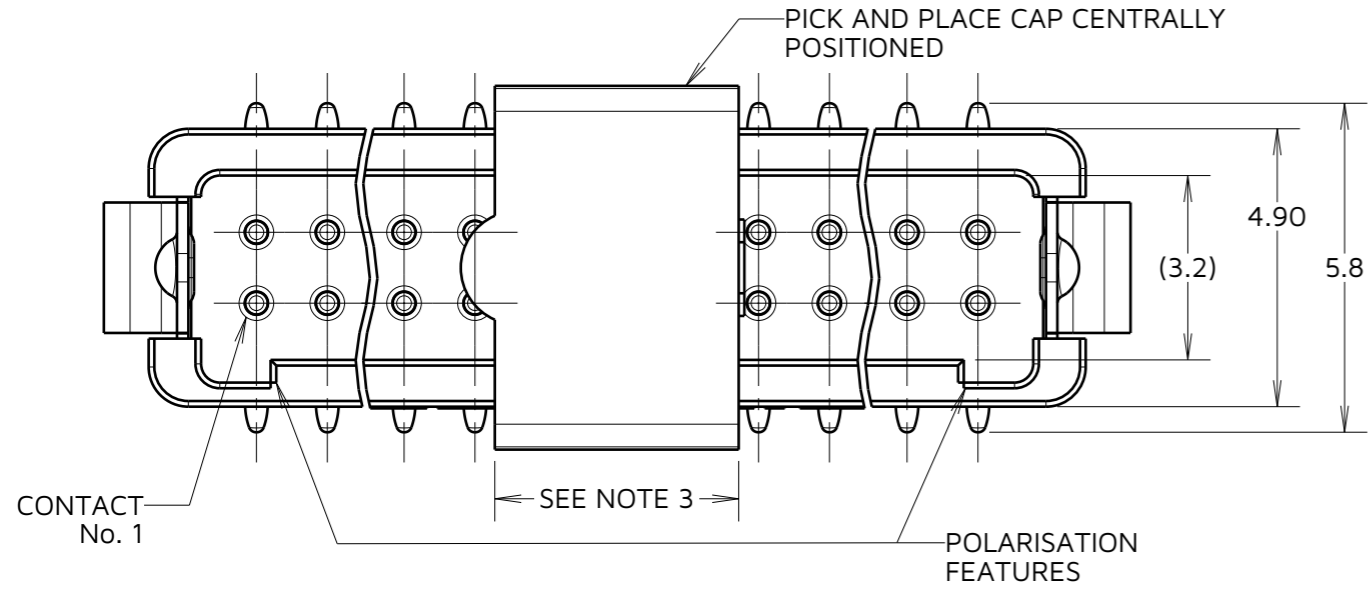
IF IN DOUBT - ASK



NOT TO SCALE

THIRD ANGLE PROJECTION

ALL DIMENSIONS IN mm



PART No.	DIM 'A'	DIM 'B'	DIM 'C'	DIM 'D'	DIM 'E'	DIM 'F'
G125-MS10605L2P	7.70	6.30	2.50	4.90	2.50	5.00
G125-MS11005L2P	10.20	8.80	5.00	7.40	5.00	7.50
G125-MS11205L2P	11.45	10.05	6.25	8.65	6.25	8.75
G125-MS11605L2P	13.95	12.55	8.75	11.15	8.75	11.25
G125-MS12005L2P	16.45	15.05	11.25	13.65	11.25	13.75
G125-MS12605L2P	20.20	18.80	15.00	17.40	15.00	17.50
G125-MS13405L2P	25.20	23.80	20.00	22.40	20.00	22.50
G125-MS15005L2P	35.20	33.80	30.00	32.40	30.00	32.50

CONNECTOR DETAILS AND PCB LAYOUT ONLY. SEE SHEET 5 FOR TAPE STRIP DETAILS.

ORDER CODE:  
G125-MS1XX05L2P

TOTAL No. OF CONTACTS: 06, 10, 12, 16, 20, 26, 34, 50

MJ	10	14.11.24	34985
NAME	ISS.	DATE	CN/CO
APPROVED:	M. JELLEY		
CHECKED:	A. BOXALL		
DRAWN:	S.FLOWER		

- NOTES:
- FOR COMPLETE SPECIFICATION, SEE COMPONENT SPECIFICATION C125XX (LATEST ISSUE).
  - CO-PLANARITY OF SMT TAILS NOT TO EXCEED 0.10mm. RECOMMENDED SOLDER PASTE THICKNESS = 0.125mm MIN.
  - PICK AND PLACE CAP LENGTH = 4.3mm ON ALL PART NUMBERS EXCEPT G125-MS10605L2P ON THIS PART LENGTH = 3.3mm.

**HARWIN**

www.harwin.com

TOLERANCES  
X. = ±1mm  
X.X = ±0.50mm  
X.XX = ±0.20mm  
X.XXX = ±0.01mm  
ANGLES = ±5°  
UNLESS STATED

THIS DRAWING AND ANY INFORMATION OR DESCRIPTIVE MATTER SET OUT HEREON ARE CONFIDENTIAL AND COPYRIGHT PROPERTY OF THE HARWIN GROUP AND MUST NOT BE DISCLOSED, LOANED, COPIED OR USED FOR MANUFACTURING, TENDERING OR FOR ANY OTHER PURPOSE WITHOUT THEIR WRITTEN PERMISSION.

MATERIAL & FINISH:  
SEE ABOVE

TITLE: **GECKO LATCH MALE VERTICAL SMT CONNECTOR ASSEMBLY**

DRAWING NUMBER: **G125-MS1XX05L2P**

SHT 4 OF 5

# Customer Information Sheet

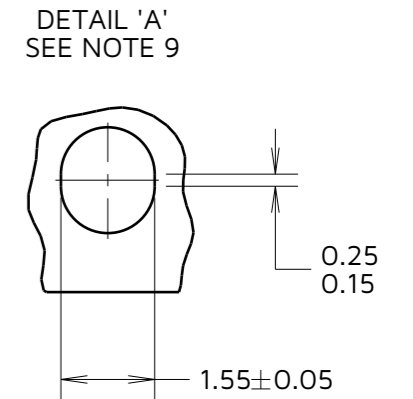
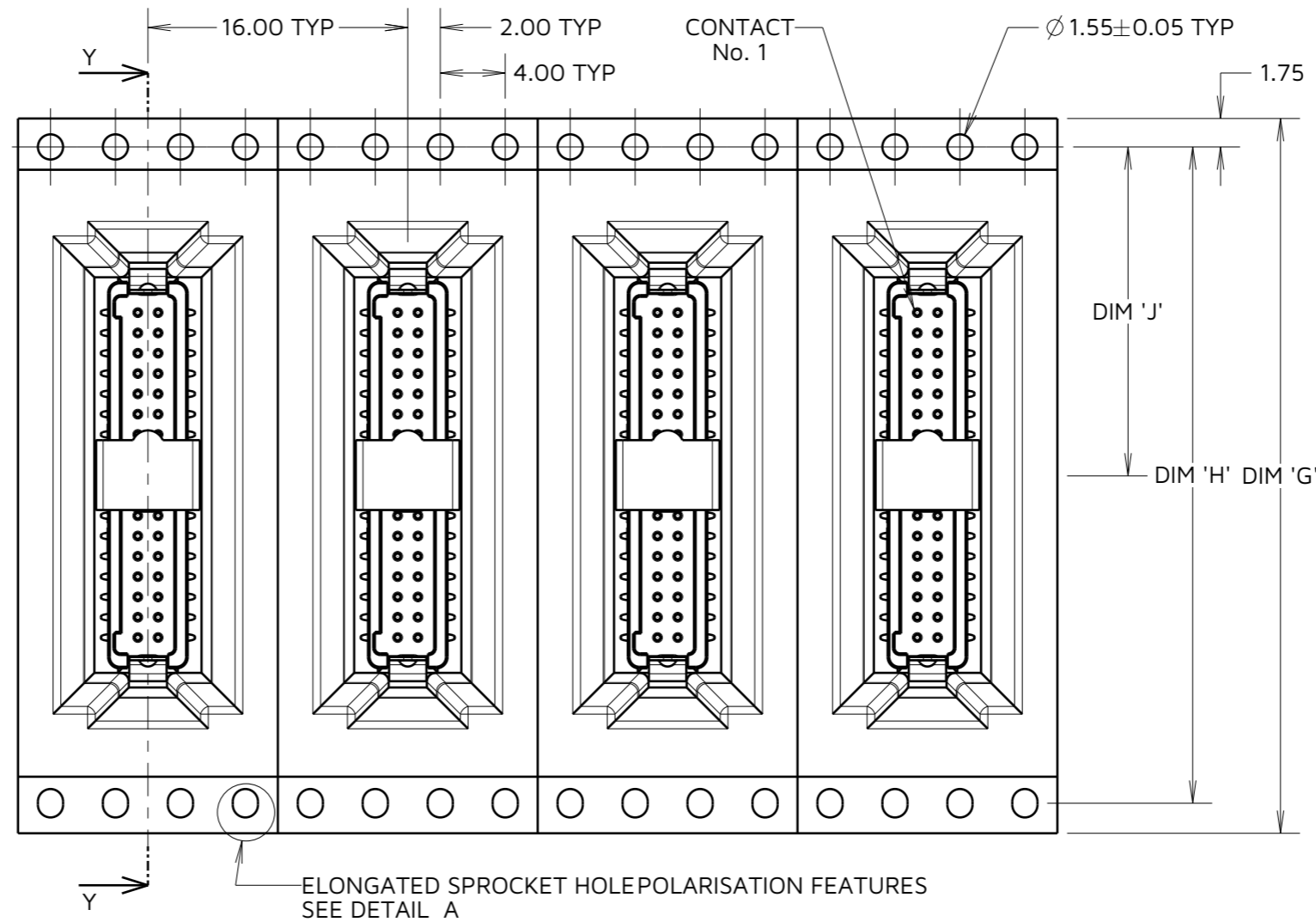
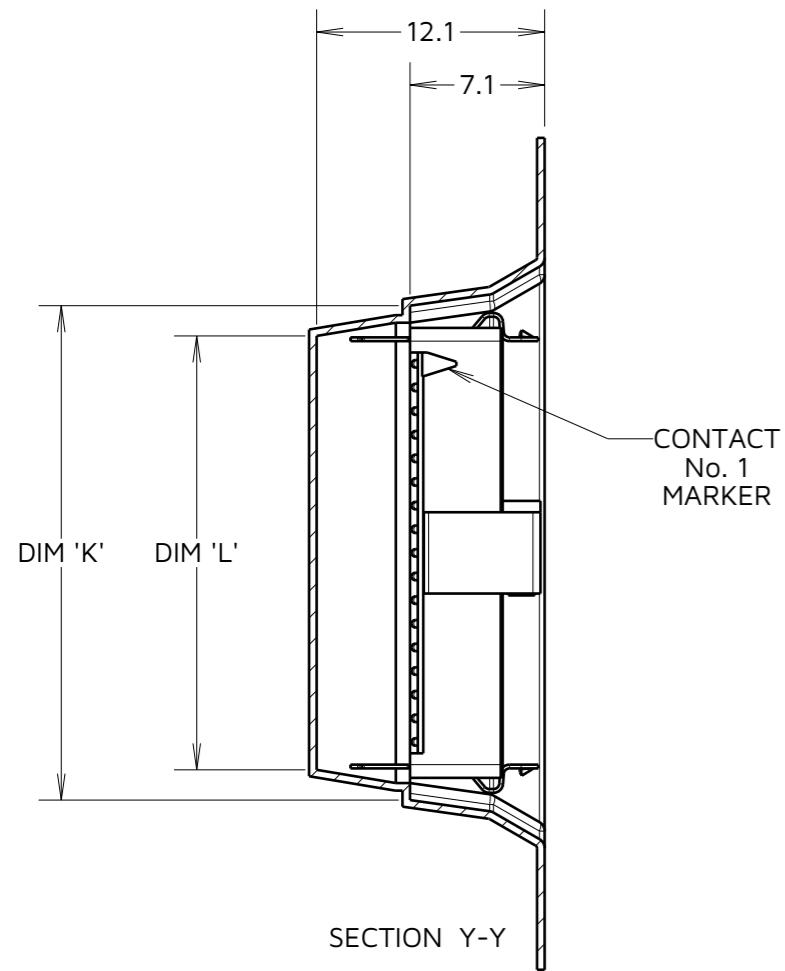
IF IN DOUBT - ASK

©

NOT TO SCALE

THIRD ANGLE PROJECTION

ALL DIMENSIONS IN mm



ORDER CODE:

**G125-MS1XX05L2P**

TOTAL No. OF CONTACTS:   
06, 10, 12, 16, 20, 26, 34, 50

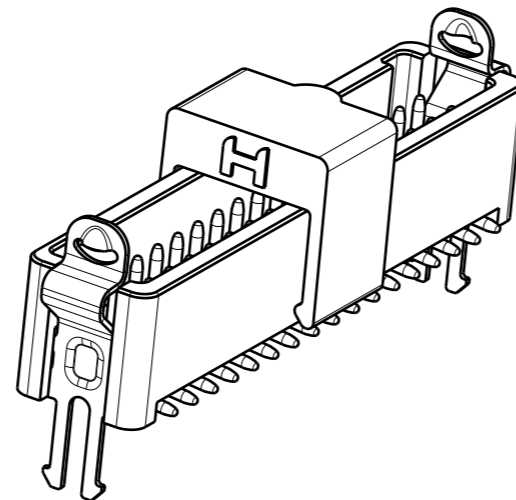


TABLE 2: DIMENSION VARIANTS

PART No.	DIM 'G'	DIM 'H'	DIM 'J'	DIM 'K'	DIM 'L'
G125-MS10605L2P	24.0±0.3	NO ELONGATED HOLE	11.50	(8.7)	(5.5)
G125-MS11005L2P				(11.2)	(8.0)
G125-MS11205L2P	32.0±0.3	28.40	14.20	(12.4)	(9.2)
G125-MS11605L2P				(14.9)	(11.7)
G125-MS12005L2P	44.0±0.3	40.40	20.2±0.15	(17.4)	(14.2)
G125-MS12605L2P				(21.2)	(18.0)
G125-MS13405L2P				(26.2)	(23.0)
G125-MS15005L2P	56.0±0.3	52.40	26.2±0.15	(36.2)	(33.0)

NOTES:

- COMPONENTS ARE ORIENTED IN TAPE POCKETS AS SHOWN.
- COMPONENTS ARE SUPPLIED IN STRIPS OF TAPE. SUPPLIED QUANTITY MAY CONSIST OF MORE THAN ONE STRIP. STRIP LENGTH MAY VARY.
- LARGE QUANTITIES MAY BE SHIPPED ON A REEL AND MAY NOT HAVE A LEADER.
- FOR PARTS ON REEL SUITABLE FOR AUTOMATIC MACHINE PLACEMENT PLEASE ORDER: G125-MS1XX05L2R.
- COMPONENTS ARE ORIENTATED IN TAPE POCKETS SO THAT THE POLARISING FEATURES ARE FACING AWAY FROM THE FREE END.
- ELONGATED SPROCKET HOLE NOT PRESENT ON 06 & 10 POSITIONS.

MJ	10	14.11.24	34985
NAME	ISS.	DATE	CN/CO
APPROVED:		M. JELLEY	
CHECKED:		A. BOXALL	
DRAWN:		S.FLOWER	

**HARWIN**

www.harwin.com

TOLERANCES  
X. = ±1mm  
X.X = ±0.50mm  
X.XX = ±0.20mm  
X.XXX = ±0.01mm  
ANGLES = ±5°  
UNLESS STATED

THIS DRAWING AND ANY INFORMATION OR DESCRIPTIVE MATTER SET OUT HEREON ARE CONFIDENTIAL AND COPYRIGHT PROPERTY OF THE HARWIN GROUP AND MUST NOT BE DISCLOSED, LOANED, COPIED OR USED FOR MANUFACTURING, TENDERING OR FOR ANY OTHER PURPOSE WITHOUT THEIR WRITTEN PERMISSION.

MATERIAL & FINISH:  
  
SEE SHEET 4

TITLE: **GECKO LATCH MALE VERTICAL SMT CONNECTOR ASSEMBLY**

DRAWING NUMBER:  
**G125-MS1XX05L2P**

SHT  
5  
OF  
5