

# Customer Information Sheet

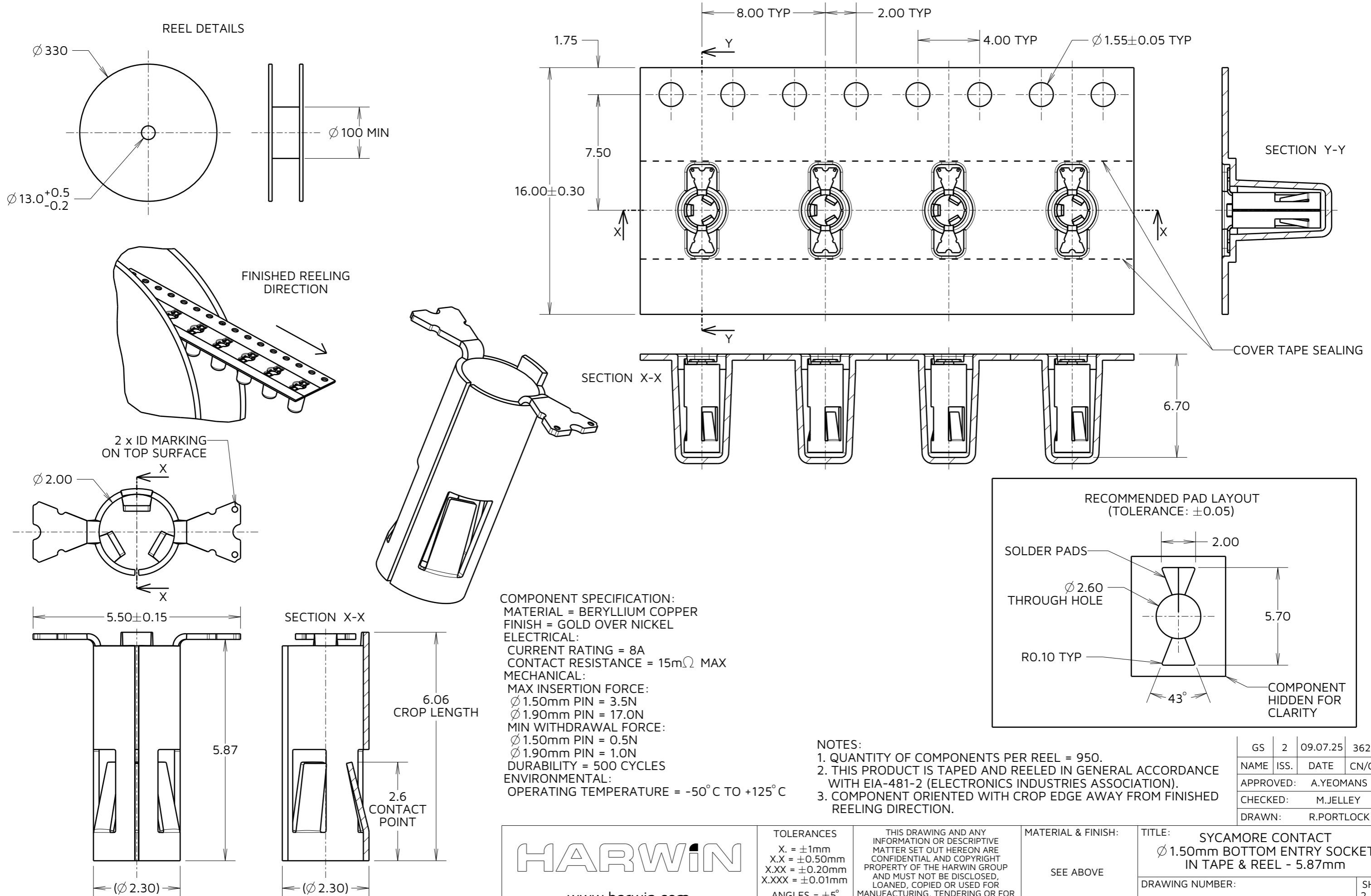
IF IN DOUBT - ASK

©

NOT TO SCALE

THIRD ANGLE PROJECTION


ALL DIMENSIONS IN mm



**COMPONENT SPECIFICATION:**  
 MATERIAL = BERYLLIUM COPPER  
 FINISH = GOLD OVER NICKEL  
**ELECTRICAL:**  
 CURRENT RATING = 8A  
 CONTACT RESISTANCE = 15mΩ MAX  
**MECHANICAL:**  
 MAX INSERTION FORCE:  
 Ø 1.50mm PIN = 3.5N  
 Ø 1.90mm PIN = 17.0N  
 MIN WITHDRAWAL FORCE:  
 Ø 1.50mm PIN = 0.5N  
 Ø 1.90mm PIN = 1.0N  
**DURABILITY = 500 CYCLES**  
**ENVIRONMENTAL:**  
 OPERATING TEMPERATURE = -50°C TO +125°C

- NOTES:**  
 1. QUANTITY OF COMPONENTS PER REEL = 950.  
 2. THIS PRODUCT IS TAPED AND REELED IN GENERAL ACCORDANCE WITH EIA-481-2 (ELECTRONICS INDUSTRIES ASSOCIATION).  
 3. COMPONENT ORIENTED WITH CROP EDGE AWAY FROM FINISHED REELING DIRECTION.

GS	2	09.07.25	36234
NAME	ISS.	DATE	CN/CO
APPROVED:	A.YEOMANS		
CHECKED:	M.JELLEY		
DRAWN:	R.PORTLOCK		

 www.harwin.com	TOLERANCES X. = ±1mm X.X = ±0.50mm X.XX = ±0.20mm X.XXX = ±0.01mm ANGLES = ±5° UNLESS STATED	THIS DRAWING AND ANY INFORMATION OR DESCRIPTIVE MATTER SET OUT HEREON ARE CONFIDENTIAL AND COPYRIGHT PROPERTY OF THE HARWIN GROUP AND MUST NOT BE DISCLOSED, LOANED, COPIED OR USED FOR MANUFACTURING, TENDERING OR FOR ANY OTHER PURPOSE WITHOUT THEIR WRITTEN PERMISSION.	MATERIAL & FINISH:  SEE ABOVE	TITLE: SYCAMORE CONTACT Ø 1.50mm BOTTOM ENTRY SOCKET IN TAPE & REEL - 5.87mm	DRAWING NUMBER: <b>S9321-45R</b>	SHT 2 OF 2
---	--	---	-------------------------------------	---	-------------------------------------	---------------