

Customer Information Sheet

IF IN DOUBT - ASK

©

NOT TO SCALE

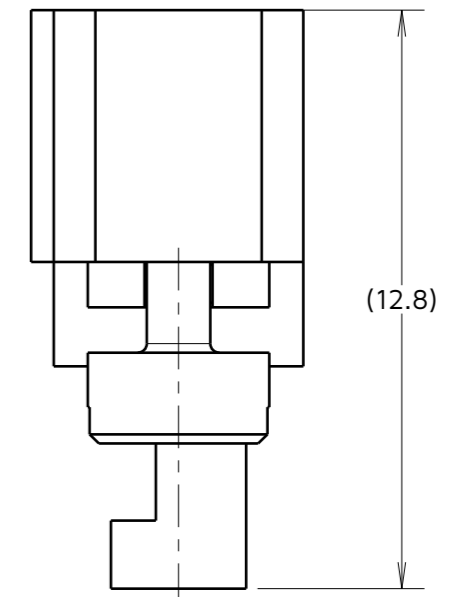
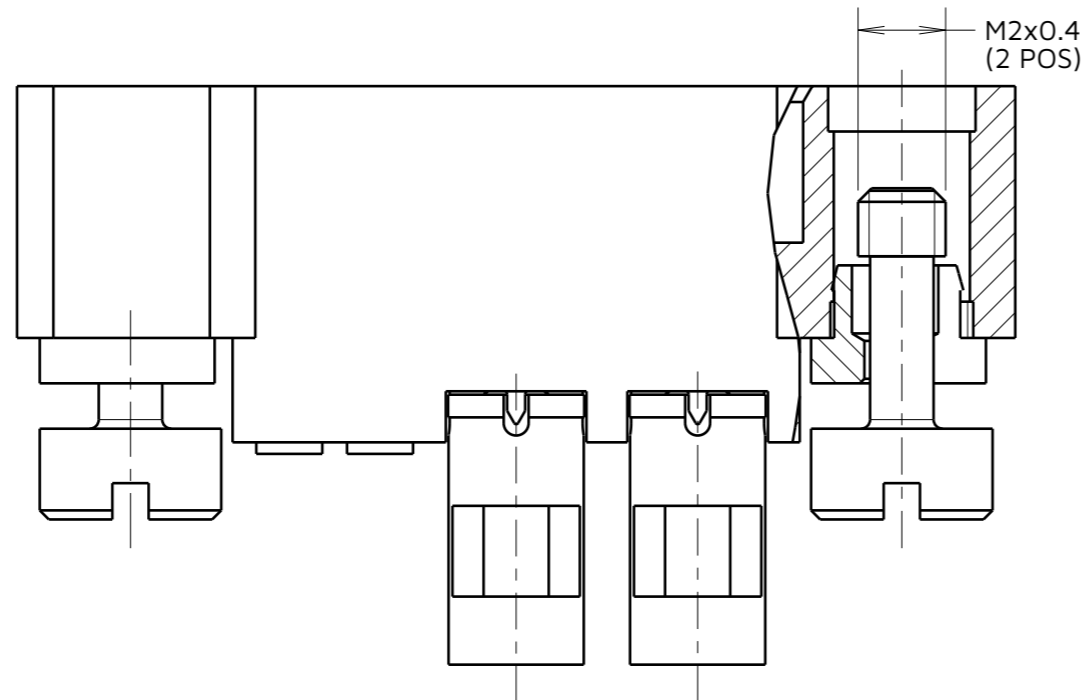
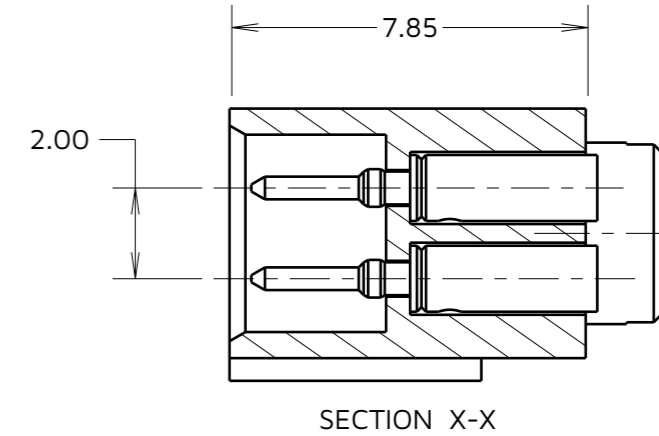
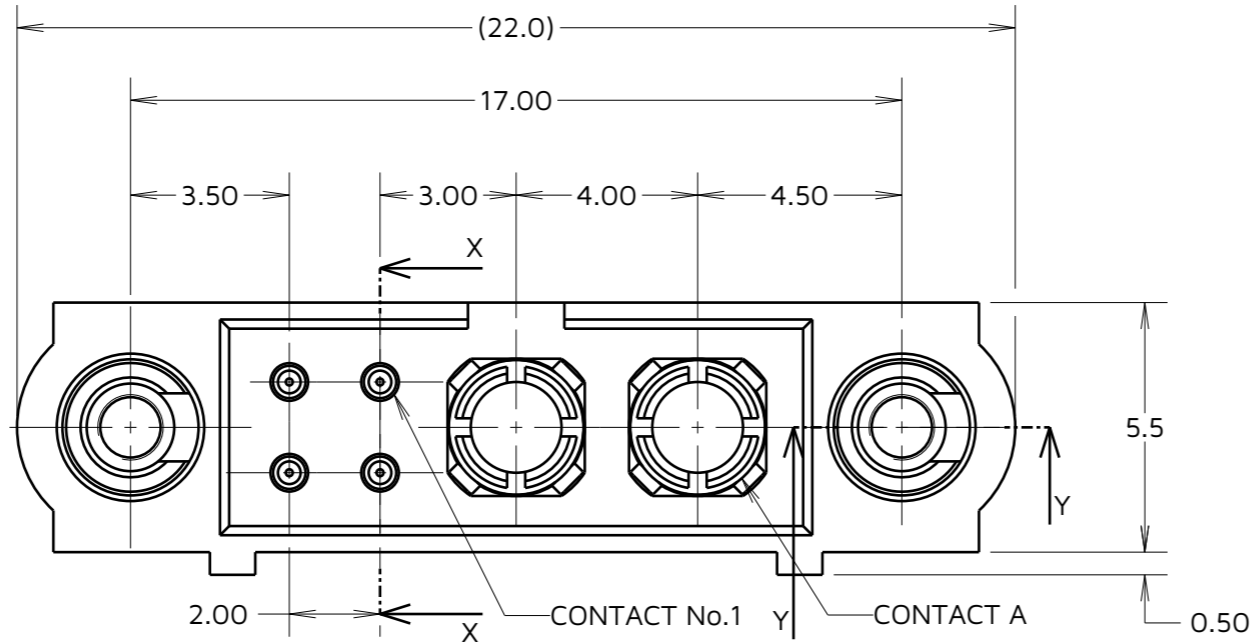
THIRD ANGLE PROJECTION

ALL DIMENSIONS IN mm

SPECIFICATIONS:

MATERIAL:
 HOUSING: GLASS FILLED PPS, UL94V-0, BLACK
 SIGNAL CONTACT: BRASS
 POWER CONTACT:
 BODY = COPPER ALLOY
 LATCHING COLLAR = BERYLLIUM COPPER
 JACKSCREW: STAINLESS STEEL
FINISH:
 SIGNAL CONTACT: GOLD OVER NICKEL
 POWER CONTACT:
 BODY = GOLD OVER NICKEL
 LATCHING COLLAR = NICKEL
PACKING:
 BAG
 FOR COMPLETE SPECIFICATION SEE
 COMPONENT SPECIFICATION C005XX
 (LATEST ISSUE)

COMPLETE ASSEMBLY
 FOR ILLUSTRATION ONLY



NOTES:

- CONNECTORS ARE SUPPLIED WITH CONTACTS LOOSE.
- FOR EXTRA SIGNAL CONTACTS, USE PART NUMBER M80-1950005.
- SEE C049XX COMPONENT SPECIFICATION FOR RECOMMENDED WIRE TYPE AND GAUGE.
- FOR CRIMPING INSTRUCTIONS, SEE TOOLING INSTRUCTION SHEET IS-01.
- SEE TOOLING INSTRUCTION SHEET IS-52 FOR CONTACT ASSEMBLY AND REMOVAL INSTRUCTIONS.
- FOR EXTRA POWER CONTACTS, USE PART NUMBER M80-337.

HARWIN

www.harwin.com

TOLERANCES
 X. = ±1mm
 X.X = ±0.50mm
 X.XX = ±0.20mm
 X.XXX = ±0.01mm
 ANGLES = ±5°
 UNLESS STATED

THIS DRAWING AND ANY INFORMATION OR DESCRIPTIVE MATTER SET OUT HEREON ARE CONFIDENTIAL AND COPYRIGHT PROPERTY OF THE HARWIN GROUP AND MUST NOT BE DISCLOSED, LOANED, COPIED OR USED FOR MANUFACTURING, TENDERING OR FOR ANY OTHER PURPOSE WITHOUT THEIR WRITTEN PERMISSION.

MATERIAL & FINISH:
 SEE ABOVE

TITLE:
 DATAMATE MIX TECH VERTICAL
 CRIMP MALE ASSY

DRAWING NUMBER:
 M80-5C10405MA-02-337-00-000

SHT
 2 OF 2

JD	1	30.10.24	----
NAME	ISS.	DATE	CN/CO
APPROVED:		R.PORTLOCK	
CHECKED:		A.YEOMANS	
DRAWN:		J.DEAN	