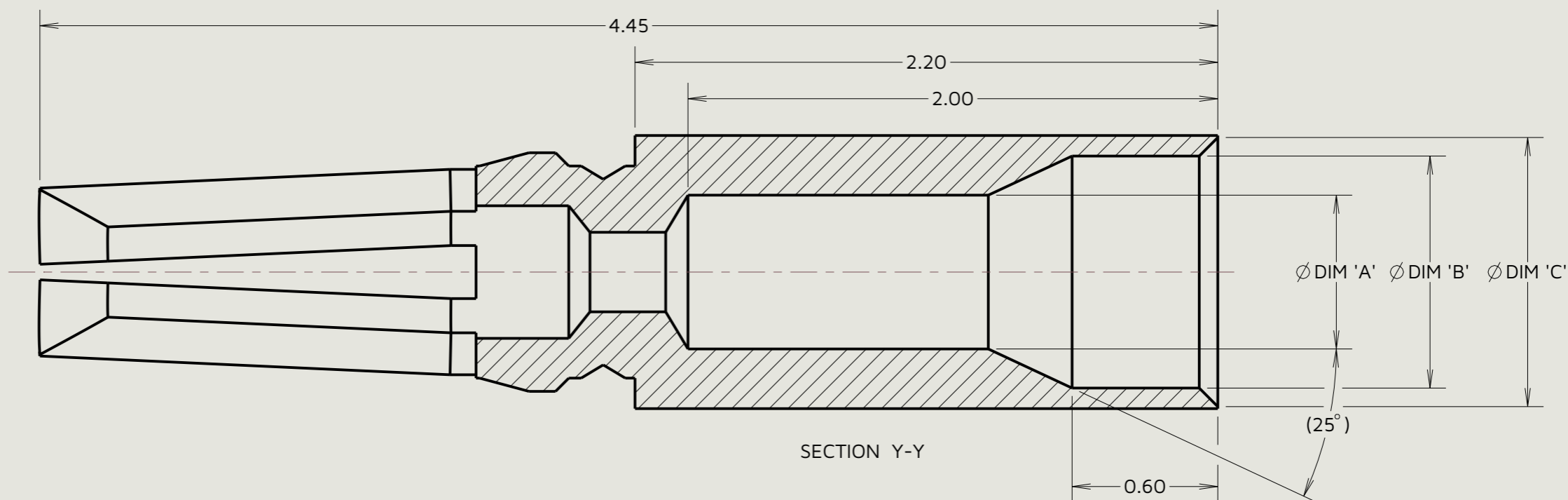
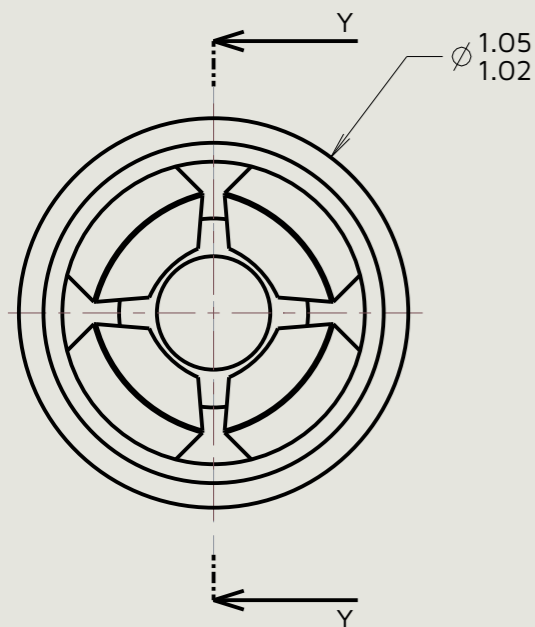
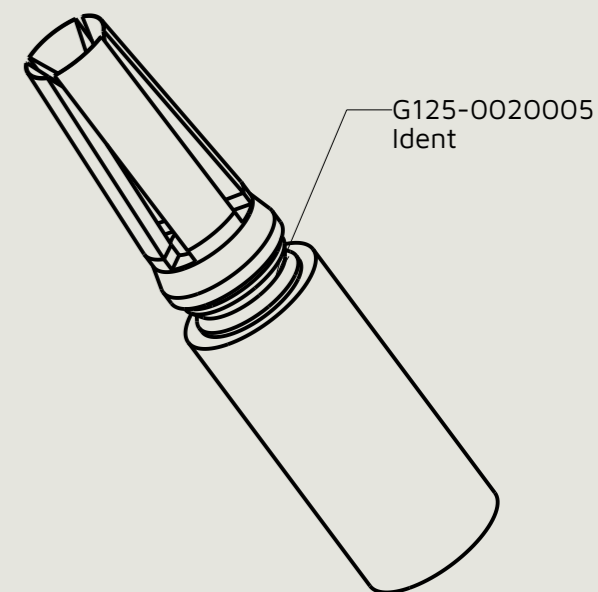
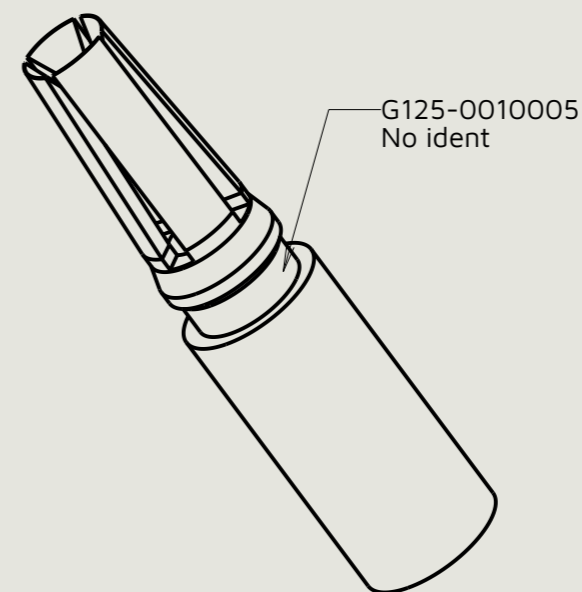


Customer Information Sheet

Order code: **G125-00X-00XX**

Wire gauge: _____
 1 = 26AWG
 2 = 28-32AWG

Plating: _____
 05 - gold plated



- NOTES:**
- G125-0010005 is suitable for wire gauge 26 AWG. Maximum insulation diameter $\phi 0.84\text{mm}$, strip wire by 1.50-1.75mm for crimping.
 - G125-0020005 is suitable for wire gauge 28-32 AWG. Maximum insulation diameter $\phi 0.74\text{mm}$, strip wire by 1.50-1.75mm for crimping.
 - Recommended crimp tool = Z125-900 & positioner = Z125-901. Contact insertion / withdrawal kit = Z125-902.
 - For instructions on hand crimp tool Z125-900, see instruction sheet IS-37.
 - For recommended wire types see component specification C049xx (latest issue).
 - Packing: 100 per box.
 - Handling guidelines: when handling this product wear nitrile/latex powder free gloves or finger cots. to prevent the contamination of contacts from hands.

Part No.	Material	Finish	DIM 'A'	DIM 'B'	DIM 'C'	Ident groove
G125-0010005	Beryllium copper	Gold over nickel	$\phi 0.60$	$\phi 0.88$	$\phi 0.95$	NO
			$\phi 0.55$	$\phi 0.85$	$\phi 0.92$	
G125-0020005			$\phi 0.48$	$\phi 0.80$	$\phi 0.87$	YES
			$\phi 0.44$	$\phi 0.77$	$\phi 0.84$	

GS	17	30.09.25	36544
Initials	Rev.	Date	CO
SF	1	20.03.12	-----

 www.harwin.com	This drawing and any information or descriptive matter set out hereon are confidential and copyright property of the harwin group and must not be disclosed, loaned, copied or used for manufacturing, tendering or for any other purpose without their written permission.	TOLERANCES X. = $\pm 0.50\text{mm}$ X.X = $\pm 0.30\text{mm}$ X.XX = $\pm 0.10\text{mm}$ X.XXX = $\pm 0.01\text{mm}$ Angles = $\pm 5^\circ$ Unless stated	Third angle projection 	MATERIAL - See ERP system for full details: See table 1	Title: G125 Series Female Crimp Signal Contacts
			Sheet scale: 20:1 Do not scale Sheet size: A3	FINISH - Surface finish to WS-71 or $<1.6\text{Ra}$ unless stated: See table 1	Drawing number: G125-00X00XX