

# Customer Information Sheet

IF IN DOUBT - ASK

©

NOT TO SCALE

THIRD ANGLE PROJECTION

ALL DIMENSIONS IN mm

**NOTES:**

1. QUANTITY OF COMPONENTS PER REEL = 800.
2. TAPE MUST HAVE A MINIMUM OF 400mm LEADER AND A MINIMUM OF 160mm TRAILER.
3. THIS PRODUCT IS TAPED AND REELED IN GENERAL ACCORDANCE WITH EIA-481-2 (ELECTRONICS INDUSTRIES ASSOCIATION).
4. RECOMMENDED MINIMUM PIN SIZE IS  $\phi 1.10$  OR 1.10 SQUARE. RECOMMENDED MAXIMUM PIN SIZE IS  $\phi 1.80$  OR 1.40 SQUARE. MATING PIN SHOULD HAVE 30° LEAD IN CHAMFER WITH MAXIMUM STARTING DIAMETER OF  $\phi 1.10$ .

**COMPONENT SPECIFICATION:**

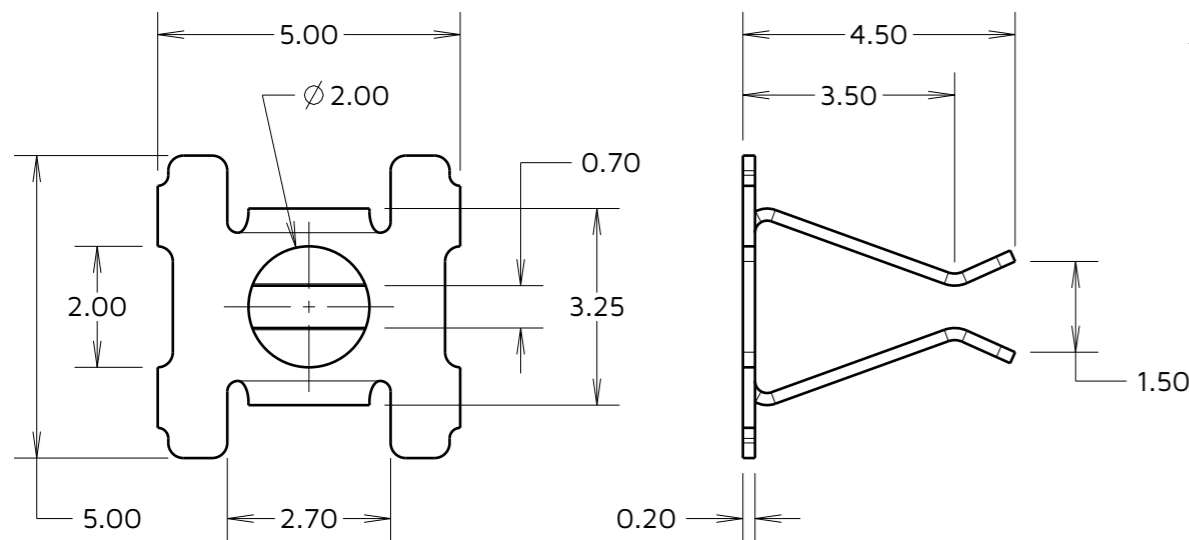
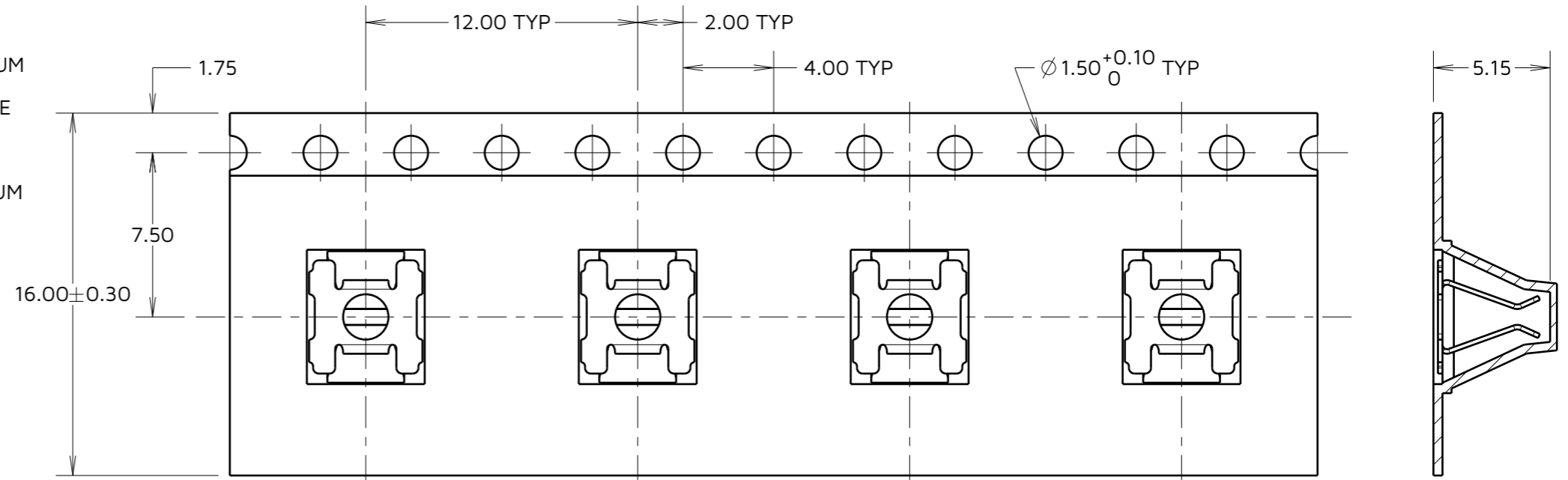
**MATERIAL:**  
PHOSPHOR BRONZE

**FINISH:**  
100% TIN OVER NICKEL

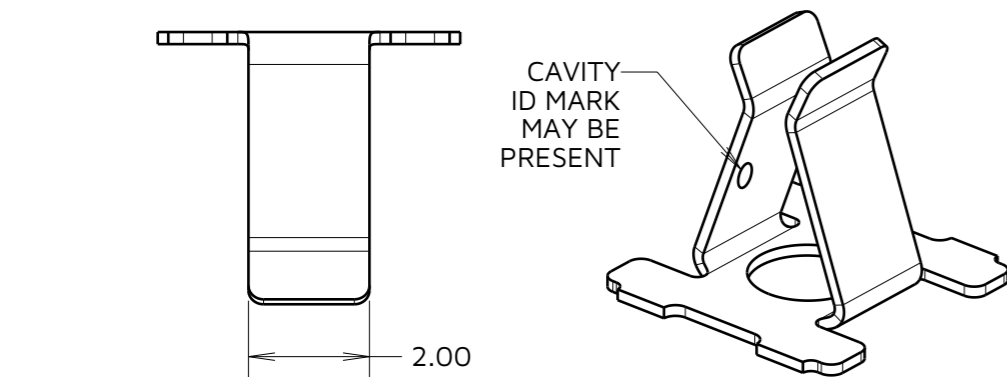
**ELECTRICAL:**  
CURRENT RATING = 9A MAX WITH A  $\phi 1.10$ mm PIN  
CONTACT RESISTANCE (BEFORE CYCLING) =  $2.67m\Omega$   
CONTACT RESISTANCE (50 CYCLES) =  $2.67m\Omega$   
DURABILITY = 100 OPERATIONS

**MECHANICAL:**  
MAX INSERTION FORCE WITH  $\phi 1.10$ mm PIN = 2.8N  
MAX INSERTION FORCE WITH  $\phi 1.80$ mm PIN = 6.0N  
MIN WITHDRAWAL FORCE WITH  $\phi 1.10$ mm PIN = 0.3N  
MIN WITHDRAWAL FORCE WITH  $\phi 1.80$ mm PIN = 0.5N

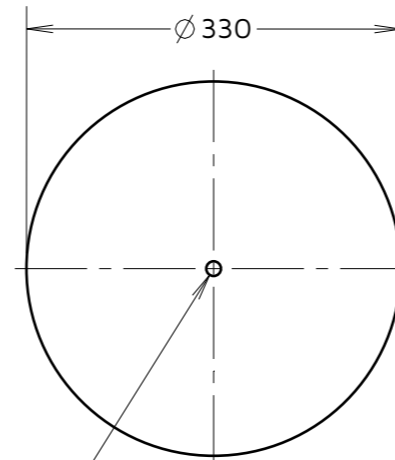
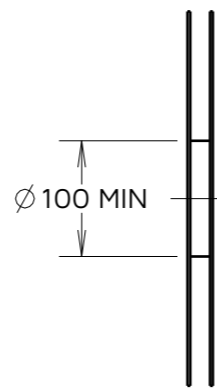
**ENVIRONMENTAL:**  
OPERATING TEMPERATURE = -40° C TO +105° C  
FOR COMPLETE SPECIFICATION, SEE HARWIN TEST REPORT SUMMARY HT007XX (LATEST ISSUE).



COMPONENT DIMENSIONS



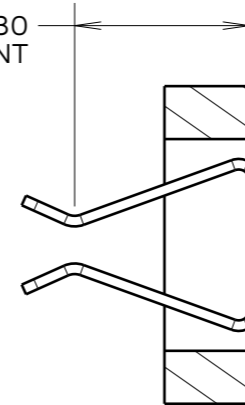
**REEL DETAILS**



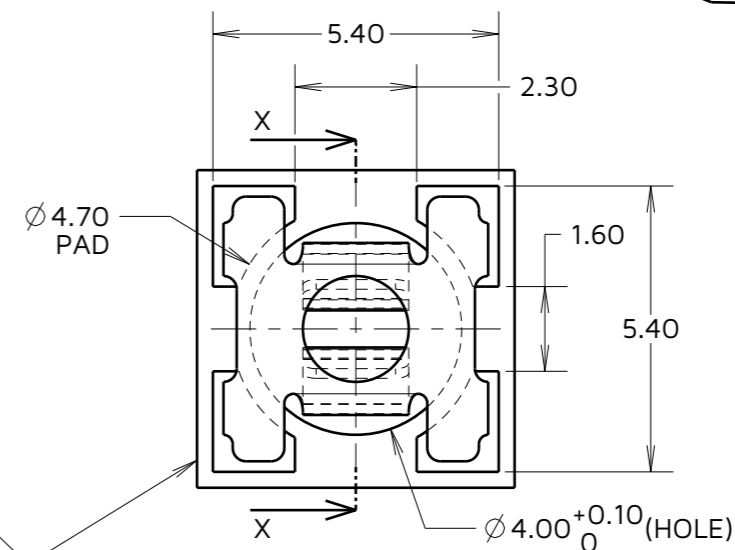
$\phi 13.0^{+0.5}_{-0.2}$

RECOMMENDED PCB PAD LAYOUT (TOLERANCE =  $\pm 0.05$ )

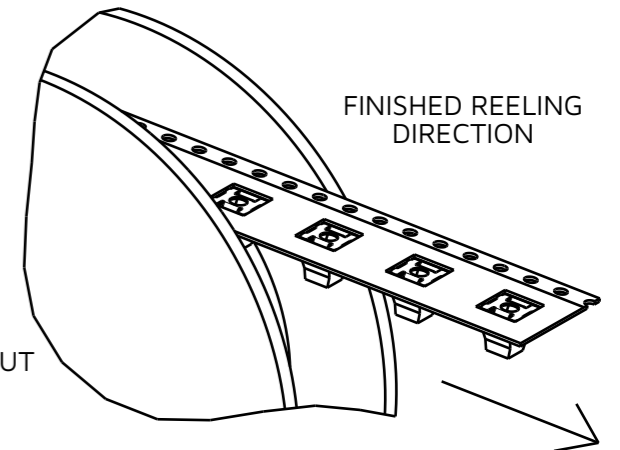
3.30 CONTACT POINT



SECTION X-X



PCB



FINISHED REELING DIRECTION

SECTION X-X

RTP	10	24.09.24	34767
NAME	ISS.	DATE	CN/CO
APPROVED:		R.PORTLOCK	
CHECKED:		A.YEOMANS	
DRAWN:		S.FLOWER	

**HARWIN**

www.harwin.com

**TOLERANCES**  
X. =  $\pm 1$ mm  
X.X =  $\pm 0.50$ mm  
X.XX =  $\pm 0.20$ mm  
X.XXX =  $\pm 0.01$ mm  
ANGLES =  $\pm 5^\circ$   
UNLESS STATED

THIS DRAWING AND ANY INFORMATION OR DESCRIPTIVE MATTER SET OUT HEREON ARE CONFIDENTIAL AND COPYRIGHT PROPERTY OF THE HARWIN GROUP AND MUST NOT BE DISCLOSED, LOANED, COPIED OR USED FOR MANUFACTURING, TENDERING OR FOR ANY OTHER PURPOSE WITHOUT THEIR WRITTEN PERMISSION.

**MATERIAL:**

SEE ABOVE

**TITLE:**

SMT CONTACT CLIP  
IN TAPE & REEL

DRAWING NUMBER:

S9101-46R

SHT  
2 OF 2