

Customer Information Sheet

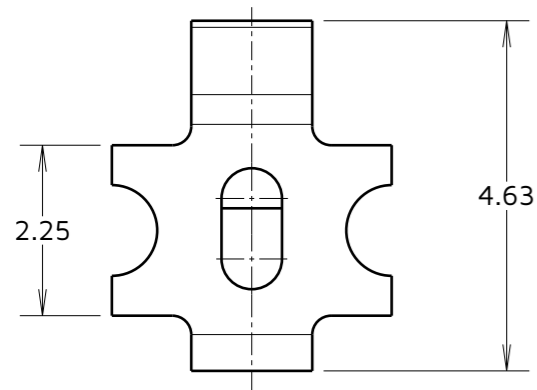
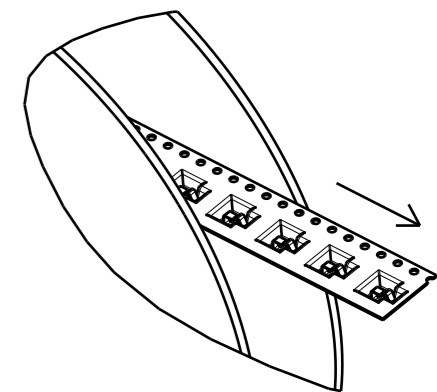
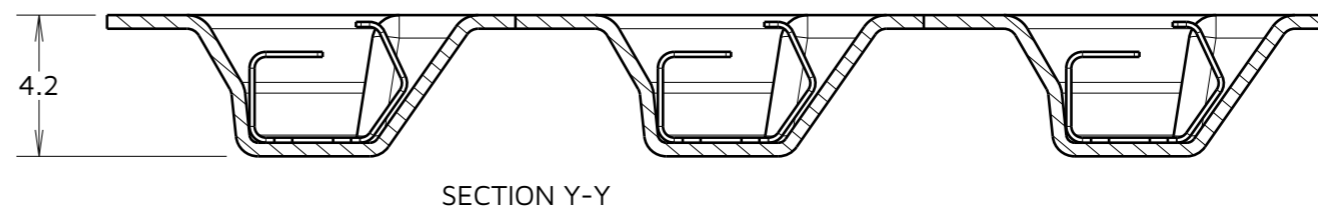
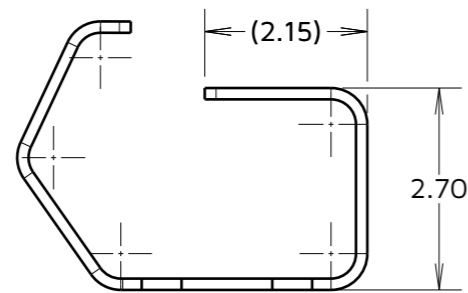
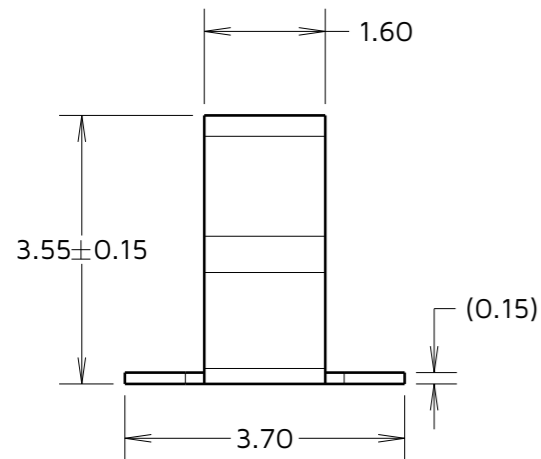
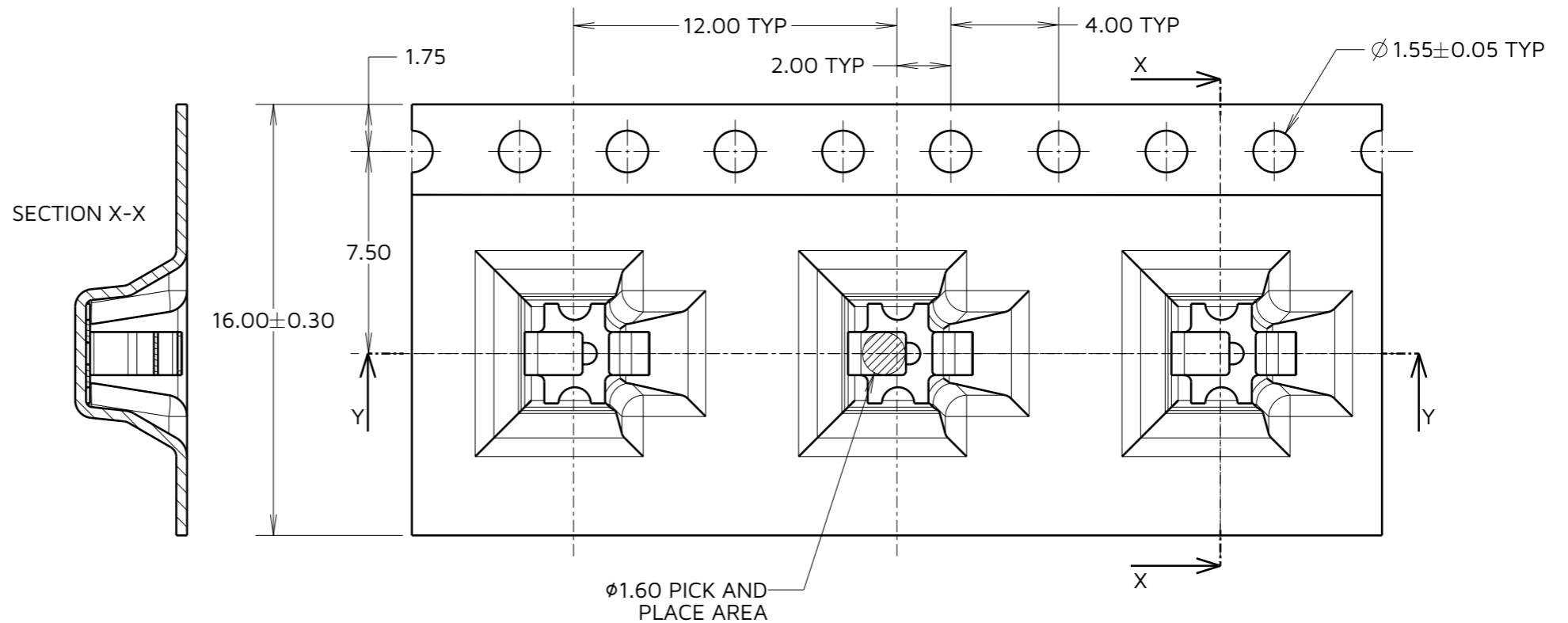
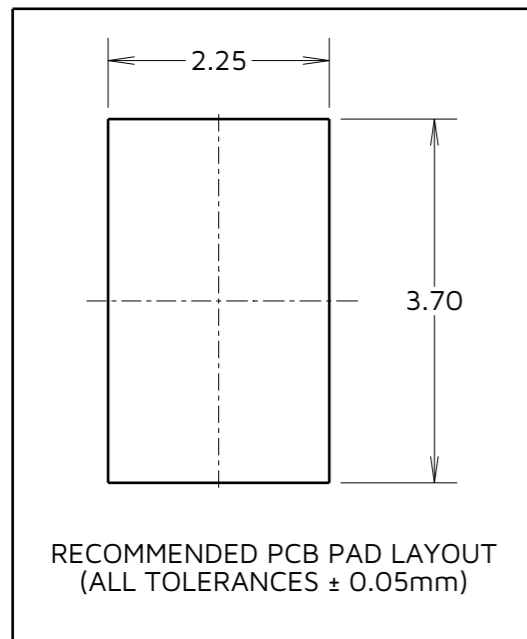
IF IN DOUBT - ASK

©

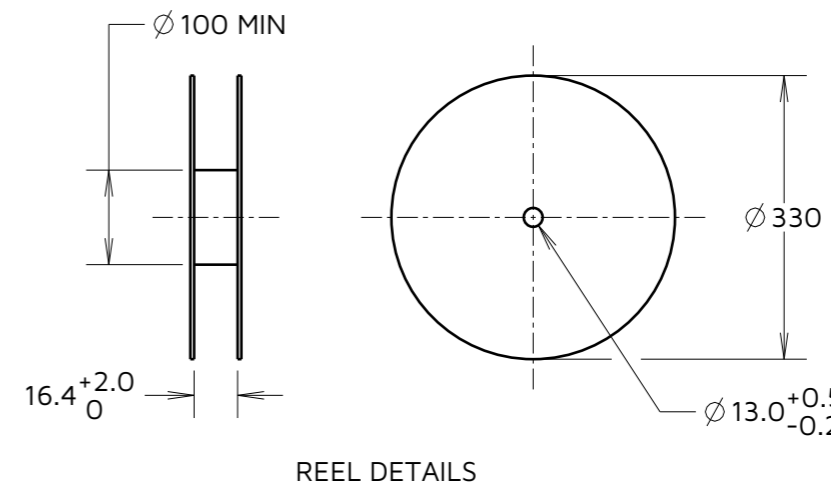
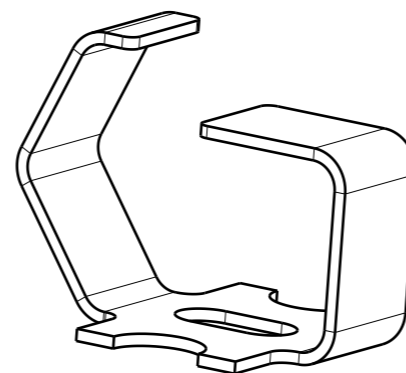
NOT TO SCALE

THIRD ANGLE PROJECTION

ALL DIMENSIONS IN mm



COMPONENT DETAILS



- NOTES:
1. QUANTITY OF COMPONENTS PER REEL = 1200.
 2. THIS PRODUCT IS TAPED AND REELED IN GENERAL ACCORDANCE WITH EIA-481 (ELECTRONICS INDUSTRIES ASSOCIATION).
 3. SEE C055XX (LATEST ISSUE) FOR FULL COMPONENT SPECIFICATION.

HARWIN
www.harwin.com

TOLERANCES
X. = $\pm 1\text{mm}$
X.X = $\pm 0.50\text{mm}$
X.XX = $\pm 0.20\text{mm}$
X.XXX = $\pm 0.01\text{mm}$
ANGLES = $\pm 5^\circ$
UNLESS STATED

THIS DRAWING AND ANY INFORMATION OR DESCRIPTIVE MATTER SET OUT HEREON ARE CONFIDENTIAL AND COPYRIGHT PROPERTY OF THE HARWIN GROUP AND MUST NOT BE DISCLOSED, LOANED, COPIED OR USED FOR MANUFACTURING, TENDERING OR FOR ANY OTHER PURPOSE WITHOUT THEIR WRITTEN PERMISSION.

MATERIAL & FINISH:
SEE SHEET 3

TITLE:
MULTI-DIRECTIONAL SPRING CONTACT
IN TAPE AND REEL

DRAWING NUMBER:
S1961-46R

SHT
2 OF 3

| | | | |
|-----------|------|-------------|-------|
| RA | 6 | 04.02.25 | 35675 |
| NAME | ISS. | DATE | CN/CO |
| APPROVED: | | R.ALEXANDER | |
| CHECKED: | | R.PORTLOCK | |
| DRAWN: | | R.PORTLOCK | |

Customer Information Sheet

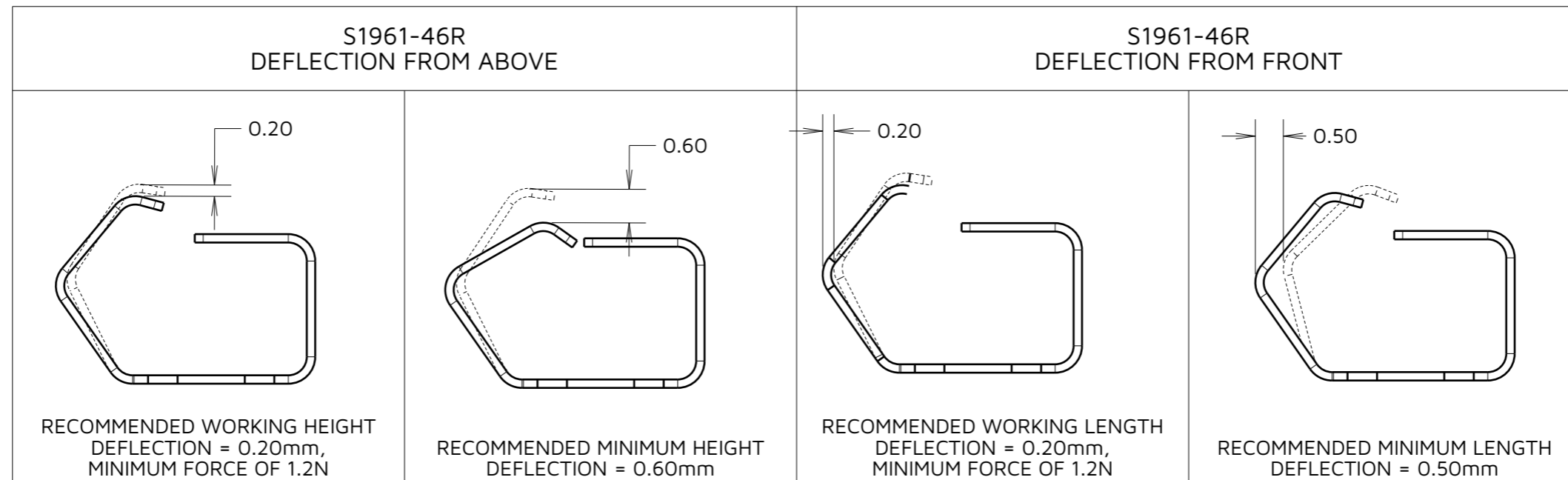
IF IN DOUBT - ASK



NOT TO SCALE

THIRD ANGLE PROJECTION

ALL DIMENSIONS IN mm



COMPONENT SPECIFICATION:
MATERIAL = CUPRO NICKEL
FINISH = 100% TIN OVER NICKEL

SEE C055XX (LATEST ISSUE) FOR
FULL COMPONENT SPECIFICATION

| | | | |
|-----------|------|-------------|-------|
| RA | 6 | 04.02.25 | 35675 |
| NAME | ISS. | DATE | CN/CO |
| APPROVED: | | R.ALEXANDER | |
| CHECKED: | | R.PORTLOCK | |
| DRAWN: | | R.PORTLOCK | |

| | | | | | | |
|-----------------------|---|--|--|--|---|-------------------------------|
| <p>www.harwin.com</p> | <p>TOLERANCES</p> <p>X. = ±1mm X.X = ±0.50mm X.XX = ±0.20mm X.XXX = ±0.01mm</p> <p>ANGLES = ±5° UNLESS STATED</p> | <p>THIS DRAWING AND ANY INFORMATION OR DESCRIPTIVE MATTER SET OUT HEREON ARE CONFIDENTIAL AND COPYRIGHT PROPERTY OF THE HARWIN GROUP AND MUST NOT BE DISCLOSED, LOANED, COPIED OR USED FOR MANUFACTURING, TENDERING OR FOR ANY OTHER PURPOSE WITHOUT THEIR WRITTEN PERMISSION.</p> | <p>MATERIAL & FINISH:</p> <p>SEE ABOVE</p> | <p>TITLE:</p> <p>MULTI-DIRECTIONAL SPRING CONTACT IN TAPE AND REEL</p> | <p>DRAWING NUMBER:</p> <p>S1961-46R</p> | <p>SHT 3 OF 3</p> |
| | | | | <p>SEE ABOVE</p> | | |