

Customer Information Sheet

IF IN DOUBT - ASK

©

NOT TO SCALE

THIRD ANGLE PROJECTION

ALL DIMENSIONS IN mm

TABLE 1(A):ORDER CONFIGURATIONS

M80-XPXXX-XX-XXXX-XXXXX														
M80	-	XP	X	XX	-	XX	-	XXXX	-	XX	X	XX		
M80	-	FP	1	F5	-	XX	-	XXXX	-	XX	X	F5		
				25								F5		
				26								26		
				27								27		
				28								28		
				29								29		
		MP	1	A	M5	-	XX	-	XXXX	-	XX	X	XX	F5
					35									25
					36									26
					37									27
					38									28
					39									29
MP	1	U	M5	-	XX	-	XXXX	-	XX	X	XX	F5		
			35									25		
			36									26		
			37									27		
			38									28		
			39									29		

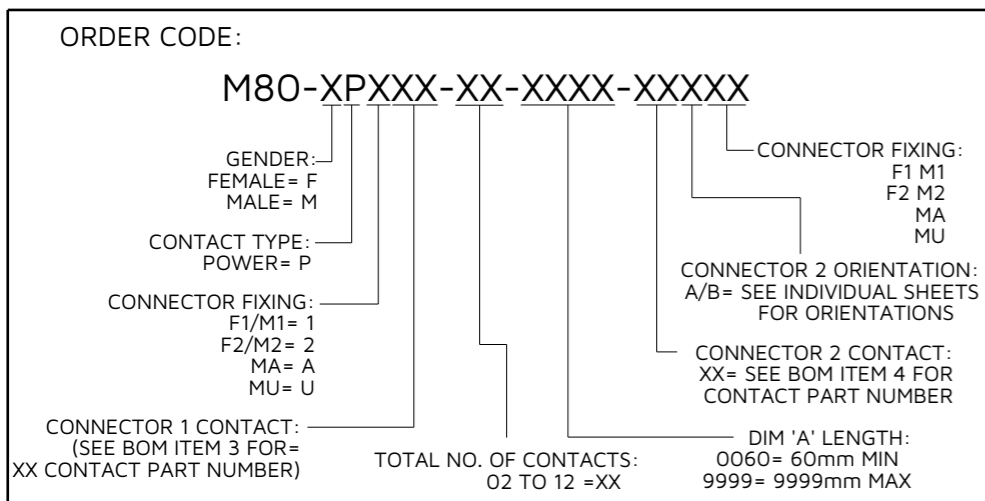
TABLE 1(B):BOM ITEM No.

①	②	③	④	⑤	⑥			
CONNECTOR 1 (SEE ORDER CODE FOR TOTAL NO. OF CONTACTS)	WIRE (SEE C049XX FOR SPEC)	CONTACT 1 (SEE ORDER CODE FOR QTY)	CONTACT 2 (SEE ORDER CODE FOR QTY)	HEAT SHRINK (SEE C049XX FOR SPEC)	CONNECTOR 2 (SEE ORDER CODE FOR TOTAL NO. OF CONTACTS)			
M80-263F1XX-00-00 M80-263F2XX-00-00	M22759/11-10	M80-PF5	M80-PF5	HS2T-0188	M80-263F1XX-00-00 M80-263F2XX-00-00			
	M22759/11-12	M80-325	M80-325	FIT221-1/8-0				
		M80-325	M80-32A					
		M80-32A	M80-32A					
	M22759/11-14	M80-326	M80-326					
		M80-326	M80-32B					
		M80-32B	M80-32B					
	M22759/11-16	M80-327	M80-327					
		M80-327	M80-32C					
		M80-32C	M80-32C					
	M22759/11-18	M80-328	M80-328					
	M80-263F1XX-00-00 M80-263F2XX-00-00	M22759/11-10	M80-PM5			M80-PF5	HS2T-0188	M80-263F1XX-00-00 M80-263F2XX-00-00
M22759/11-12		M80-335	M80-32A		FIT221-1/8-0			
		M80-335	M80-325					
M22759/11-14		M80-336	M80-326					
		M80-336	M80-32B					
M22759/11-16		M80-337	M80-327					
		M80-337	M80-32C					
M22759/11-18		M80-328	M80-328					
M22759/11-20		M80-339	M80-329					
M80-273M1XX-00-00 M80-273MAXX-00-00 M80-273MUXX-00-00		M22759/11-10	M80-PM5	M80-PM5		HS2T-0188	M80-273M1XX-00-00 M80-273MAXX-00-00 M80-273MUXX-00-00	
		M22759/11-12	M80-335	M80-335		FIT221-1/8-0		
		M22759/11-14	M80-336	M80-336				
	M22759/11-16	M80-337	M80-337					
M22759/11-18	M80-338	M80-338						
M22759/11-20	M80-339	M80-339						

NOTES:

- ASSEMBLIES SHOWN FOR ILLUSTRATIVE PURPOSES ONLY AND WILL DIFFER BASED ON PART NUMBER.
- FOR STRAIGHT-TO-STRAIGHT CONFIGURATIONS, SEE SHEET 8.
FOR STRAIGHT-TO-HORIZONTAL CONFIGURATIONS, SEE SHEET 9.
FOR HORIZONTAL-TO-HORIZONTAL CONFIGURATIONS, SEE SHEET 10.
- FOR FIXING IDENTIFICATION AND DIMENSIONS SEE SHEET 12.
- RoHS COMPLIANT WIRES MUST BE USED.
- FOR WIRE SPECIFICATION, GAUGE AND TYPE, SEE COMPONENT SPECIFICATION C049XX (LATEST ISSUE).
- FOR ALL HOUSING DIMENSIONS, SEE RESPECTIVE DRAWINGS FOR BOM ITEMS 1 & 5.
- ONLY CONTACTS COMPATIBLE FOR USE WITH THE SAME WIRE CAN BE COMBINED IN AN ASSEMBLY.
- FOR CONTACT IDENTIFICATION SEE SHEET 11.
- WIRING OF ALL CABLES IS AS FOLLOWS:
CONTACT 1 TO CONTACT 1
CONTACT 2 TO CONTACT 2, ETC.

FC	1	19.12.23	32016
NAME	ISS.	DATE	CN/CO
APPROVED: M.RUDKIN			
CHECKED: R.PORTLOCK			
DRAWN: F.CHRISPINE			
ASSEMBLY DRG:			



HARWIN

www.harwin.com

TOLERANCES
 X. = ±1mm
 X.X = ±0.50mm
 X.XX = ±0.20mm
 X.XXX = ±0.01mm
 ANGLES = ±5°
 UNLESS STATED

THIS DRAWING AND ANY INFORMATION OR DESCRIPTIVE MATTER SET OUT HEREON ARE CONFIDENTIAL AND COPYRIGHT PROPERTY OF THE HARWIN GROUP AND MUST NOT BE DISCLOSED, LOANED, COPIED OR USED FOR MANUFACTURING, TENDERING OR FOR ANY OTHER PURPOSE WITHOUT THEIR WRITTEN PERMISSION.

MATERIAL:
 SEE ABOVE

TITLE:
 DATAMATE DOUBLE-ENDED POWER CABLE ASSEMBLY

DRAWING NUMBER:
 M80-XPXXX-XX-XXXX-XXXXX

SHT
7
OF
12

Customer Information Sheet

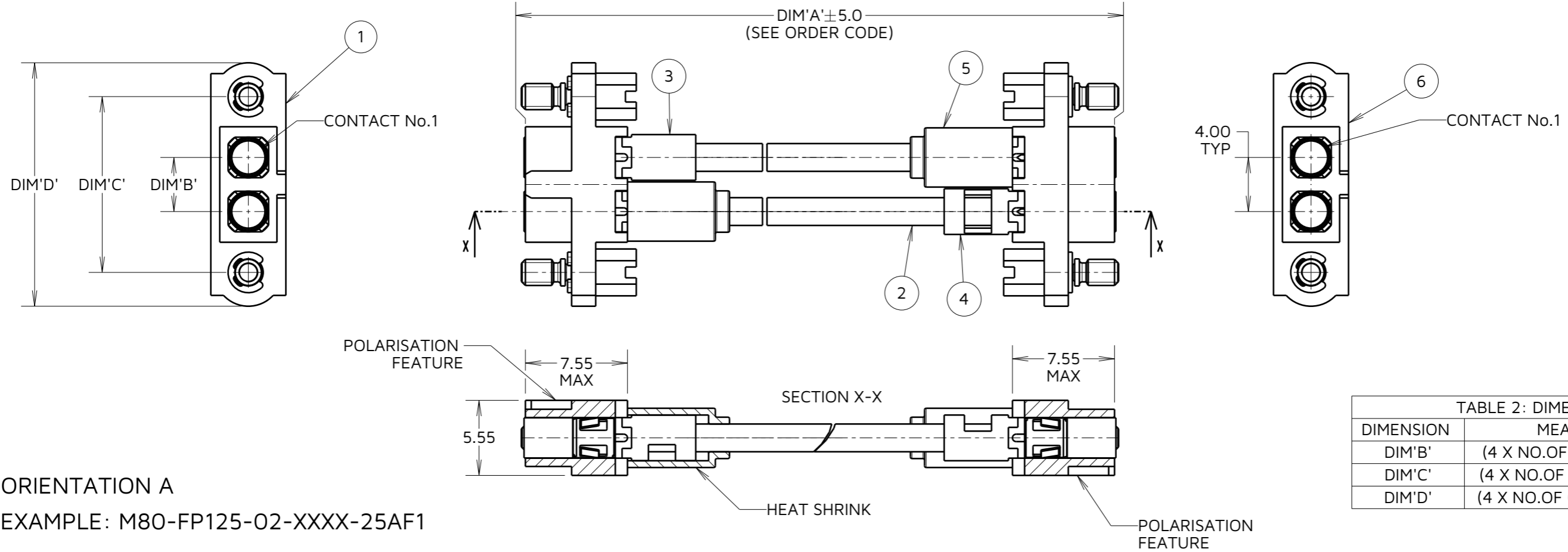
IF IN DOUBT - ASK

©

NOT TO SCALE

THIRD ANGLE PROJECTION

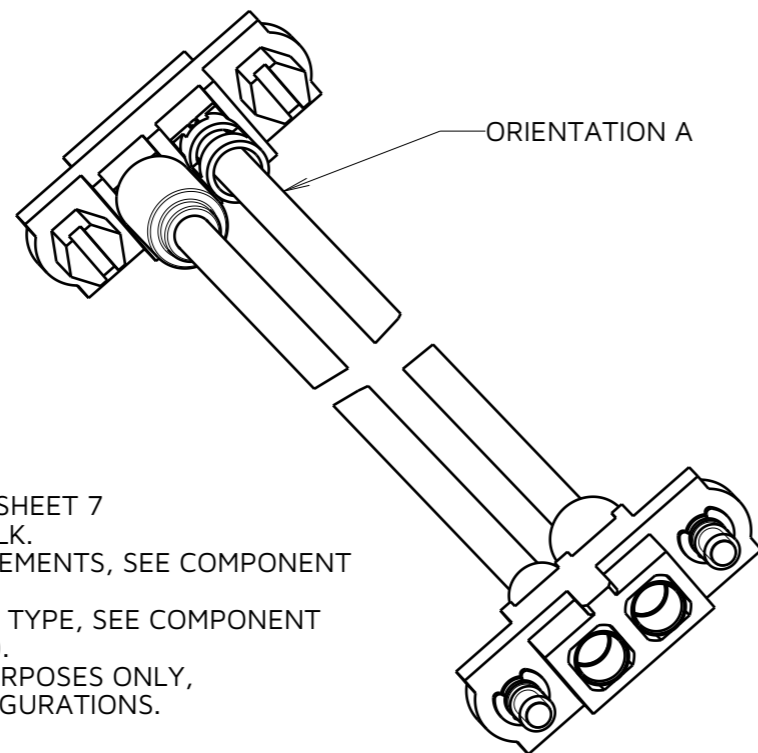
ALL DIMENSIONS IN mm



ORIENTATION A

EXAMPLE: M80-FP125-O2-XXXX-25AF1

STRAIGHT-TO-STRAIGHT CONFIGURATIONS



NOTES:

10. (X) = BOM ITEM NO, SEE TABLE 1(B) ON SHEET 7
11. CABLE ASSEMBLIES ARE PACKED IN BULK.
12. FOR MECHANICAL/ELECTRICAL REQUIREMENTS, SEE COMPONENT SPECIFICATION C005X (LATEST ISSUE).
13. FOR WIRE SPECIFICATION, GAUGE AND TYPE, SEE COMPONENT SPECIFICATION C049XX (LATEST ISSUE).
14. ASSEMBLY VIEW FOR ILLUSTRATIVE PURPOSES ONLY, SEE ORDER CODE FOR POSSIBLE CONFIGURATIONS.
15. POSSIBLE CONFIGURATIONS:
 FEMALE-TO-FEMALE
 MALE-TO-FEMALE
 MALE-TO-MALE
16. FOR POSSIBLE CONTACT COMBINATIONS, SEE BOM TABLE ON SHEET 7.
17. ONLY CONTACTS COMPATIBLE WITH THE SAME WIRE CAN BE COMBINED IN AN ASSEMBLY.
18. HEAT SHRINK USED ON ALTERNATING CONTACTS IN THE ASSEMBLY. SEE C049XX (LATEST ISSUE) FOR HEAT SHRINK TYPE.

M80-XPXXX-XX-XXXX-XXXXX

GENDER: FEMALE = F MALE = M	CONNECTOR FIXING: F1 M1 F2 M2 MA MU
CONTACT TYPE: POWER = P	CONNECTOR 2 ORIENTATION: A/B = SEE INDIVIDUAL SHEETS FOR ORIENTATIONS
CONNECTOR FIXING: F1/M1 = 1 M2/M2 = 2 MA = A MU = U	CONNECTOR 2 CONTACT: XX = SEE BOM ITEM 4 FOR CONTACT PART NUMBER
CONNECTOR 1 CONTACT: (SEE BOM ITEM 3 FOR = XX CONTACT PART NUMBER)	DIM 'A' LENGTH: 0060 = 60mm MIN 9999 = 9999mm MAX
TOTAL NO. OF CONTACTS: 02 TO 08 = XX	

FC	1	19.12.23	32016
NAME	ISS.	DATE	CN/CO
APPROVED: M.RUDKIN			
CHECKED: R.PORTLOCK			
DRAWN: F.CHRISPINE			
ASSEMBLY DRG:			

HARWIN

www.harwin.com

TOLERANCES
 X. = ±1mm
 X.X = ±0.50mm
 X.XX = ±0.20mm
 X.XXX = ±0.01mm
 ANGLES = ±5°
 UNLESS STATED

THIS DRAWING AND ANY INFORMATION OR DESCRIPTIVE MATTER SET OUT HEREON ARE CONFIDENTIAL AND COPYRIGHT PROPERTY OF THE HARWIN GROUP AND MUST NOT BE DISCLOSED, LOANED, COPIED OR USED FOR MANUFACTURING, TENDERING OR FOR ANY OTHER PURPOSE WITHOUT THEIR WRITTEN PERMISSION.

MATERIAL:
 SEE SHEET 7

TITLE:
DATAMATE DOUBLE-ENDED POWER CABLE ASSEMBLY

DRAWING NUMBER:
M80-XPXXX-XX-XXXX-XXXXX

SHT
 8
 OF
 12

Customer Information Sheet

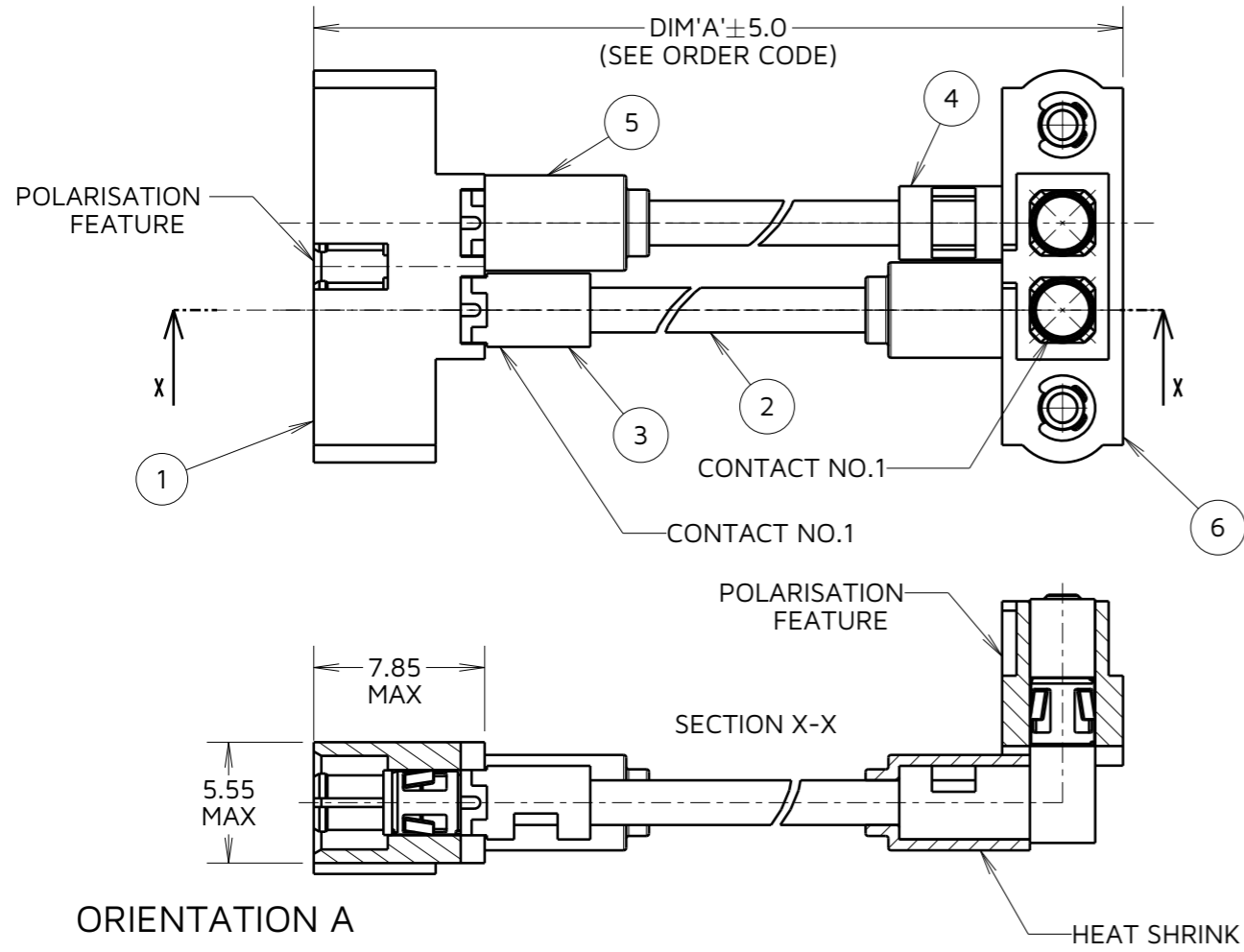
IF IN DOUBT - ASK

©

NOT TO SCALE

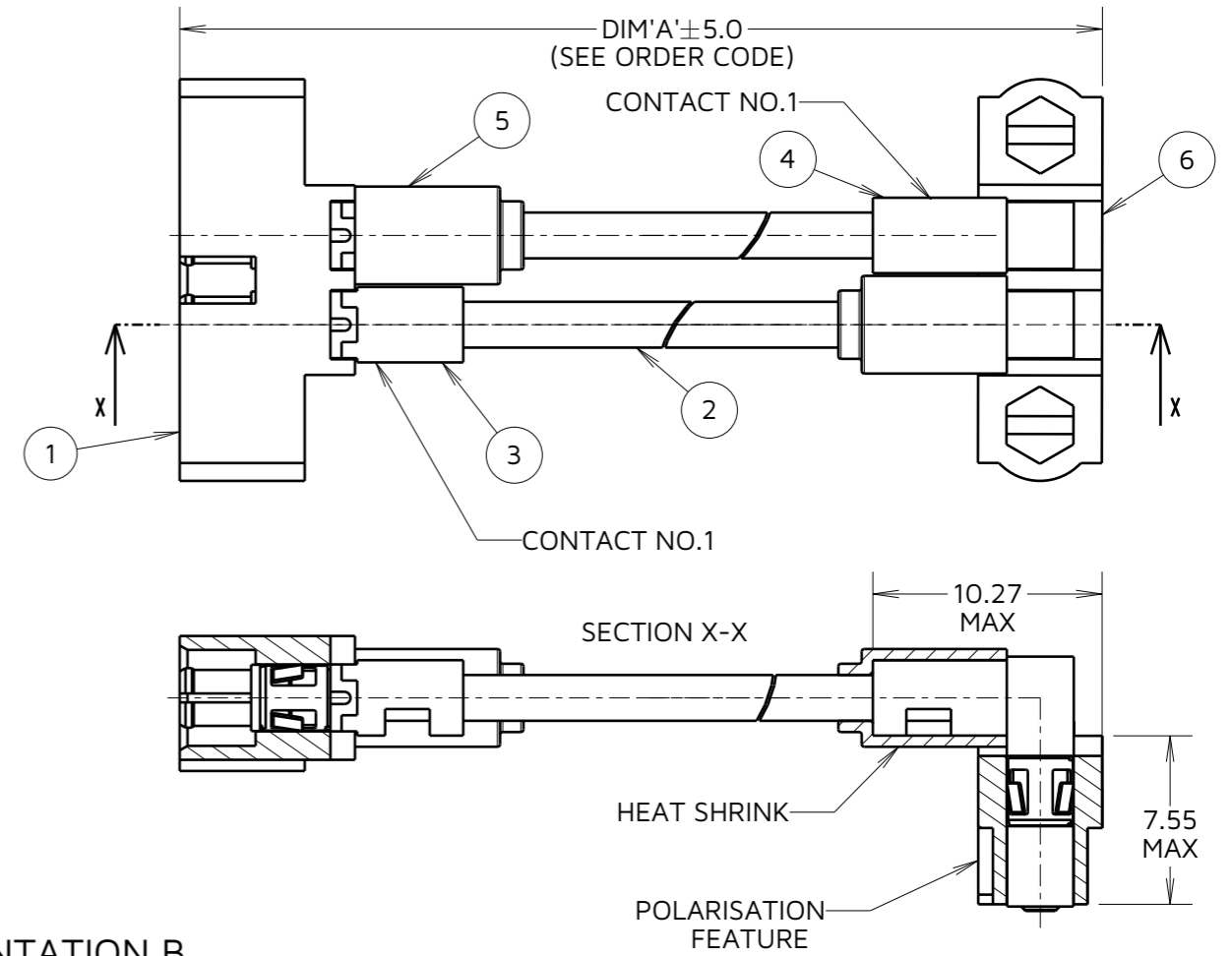
THIRD ANGLE PROJECTION

ALL DIMENSIONS IN mm



ORIENTATION A

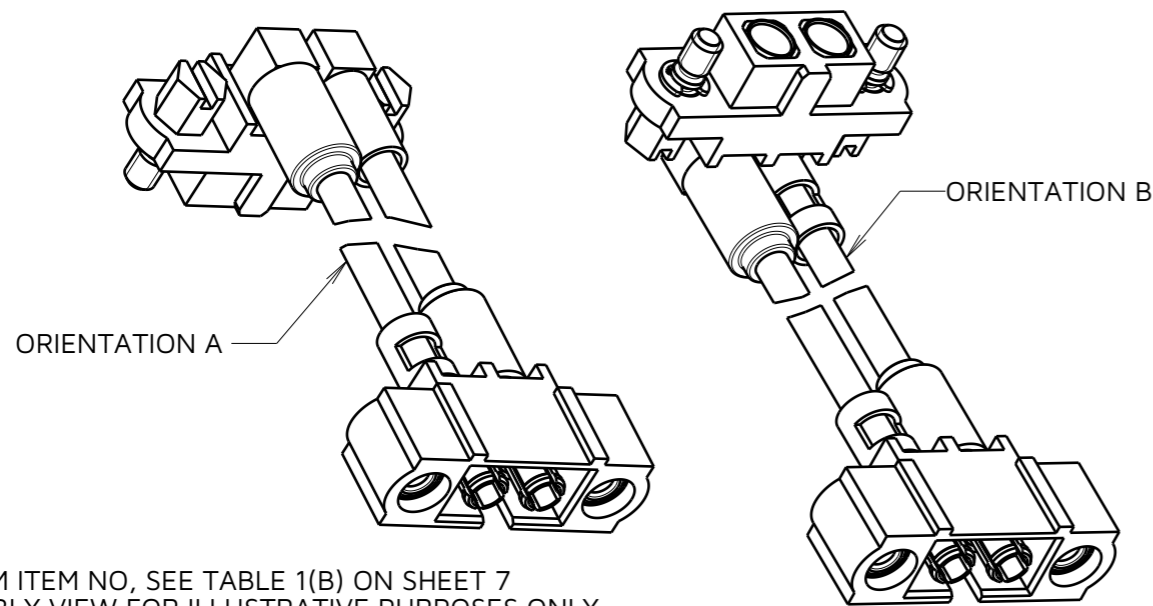
EXAMPLE: M80-MP135-02-XXXX-2AAF1



ORIENTATION B

EXAMPLE: M80-MP135-02-XXXX-2ABF1

STRAIGHT-TO-HORIZONTAL CONFIGURATIONS



M80-XPXXX-XX-XXXX-XXXXX

GENDER: FEMALE = F MALE = M	CONNECTOR FIXING: F1 M1 F2 M2 MA MU
CONTACT TYPE: POWER = P	CONNECTOR 2 ORIENTATION: A/B = SEE INDIVIDUAL SHEETS FOR ORIENTATIONS
CONNECTOR FIXING: F1/M1 = 1 M2/M2 = 2 MA = A MU = U	CONNECTOR 2 CONTACT: XX = SEE BOM ITEM 4 FOR CONTACT PART NUMBER
CONNECTOR 1 CONTACT: (SEE BOM ITEM 3 FOR = XX CONTACT PART NUMBER)	DIM 'A' LENGTH: 0060 = 60mm MIN 9999 = 9999mm MAX
TOTAL NO. OF CONTACTS: 02 TO 08 = XX	

FC	1	19.12.23	32016
NAME	ISS.	DATE	CN/CO
APPROVED: M.RUDKIN			
CHECKED: R.PORTLOCK			
DRAWN: F.CHRISPINE			
ASSEMBLY DRG:			

NOTES:

19. (X) = BOM ITEM NO, SEE TABLE 1(B) ON SHEET 7
20. ASSEMBLY VIEW FOR ILLUSTRATIVE PURPOSES ONLY, SEE ORDER CODE FOR POSSIBLE CONFIGURATIONS.
21. POSSIBLE CONFIGURATIONS:
MALE-TO-FEMALE
FEMALE-TO-FEMALE
22. FOR POSSIBLE CONTACT COMBINATIONS, SEE BOM TABLE ON SHEET 7.
23. ONLY CONTACTS COMPATIBLE WITH THE SAME WIRE CAN BE COMBINED IN AN ASSEMBLY.

HARWIN

www.harwin.com

TOLERANCES
X. = ±1mm
X.X = ±0.50mm
X.XX = ±0.20mm
X.XXX = ±0.01mm
ANGLES = ±5°
UNLESS STATED

THIS DRAWING AND ANY INFORMATION OR DESCRIPTIVE MATTER SET OUT HEREON ARE CONFIDENTIAL AND COPYRIGHT PROPERTY OF THE HARWIN GROUP AND MUST NOT BE DISCLOSED, LOANED, COPIED OR USED FOR MANUFACTURING, TENDERING OR FOR ANY OTHER PURPOSE WITHOUT THEIR WRITTEN PERMISSION.

MATERIAL:

SEE SHEET 7

TITLE:
**DATAMATE DOUBLE-ENDED
POWER CABLE ASSEMBLY**

DRAWING NUMBER:
M80-XPXXX-XX-XXXX-XXXXX

SHT
9
OF
12

Customer Information Sheet

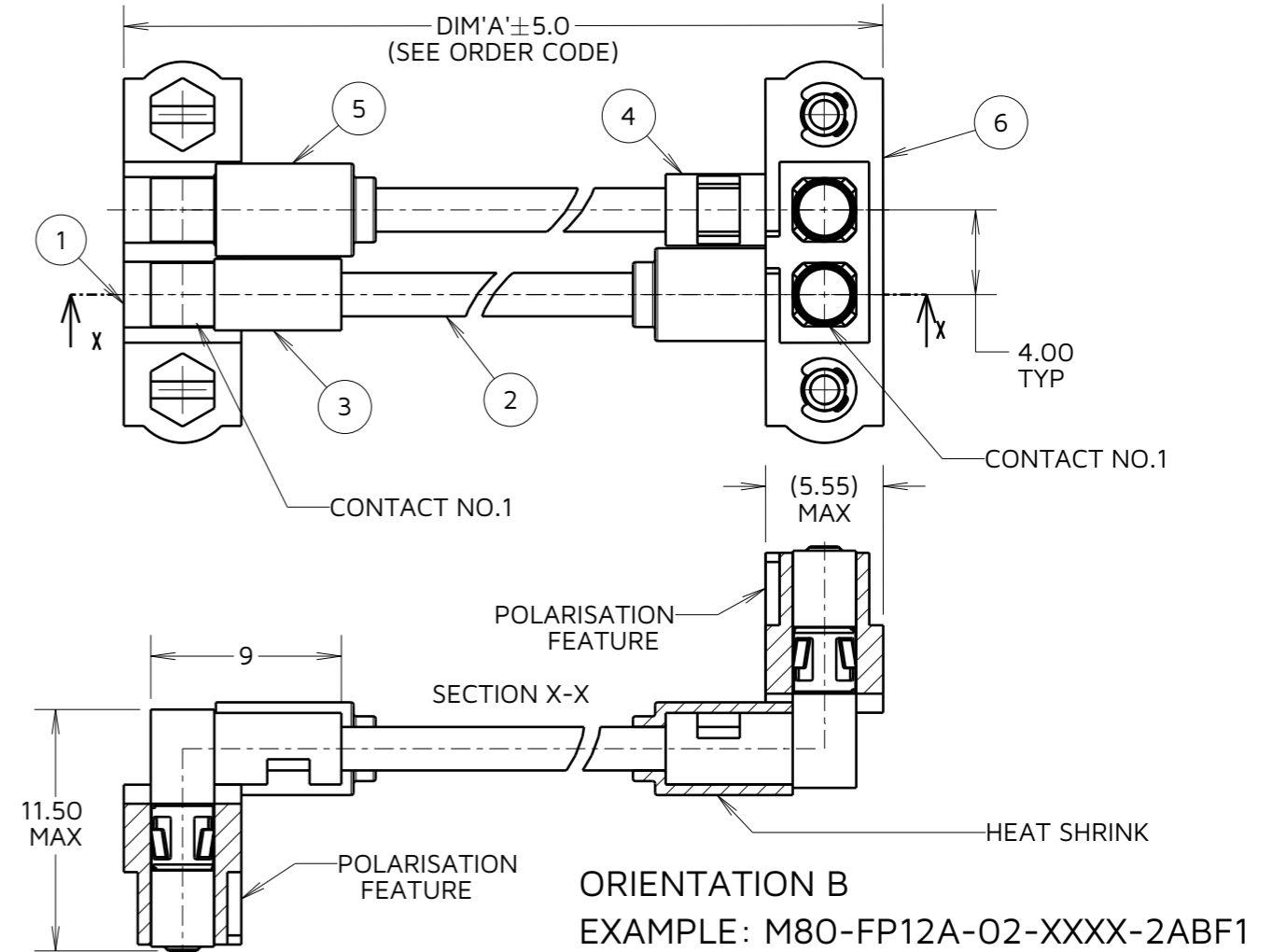
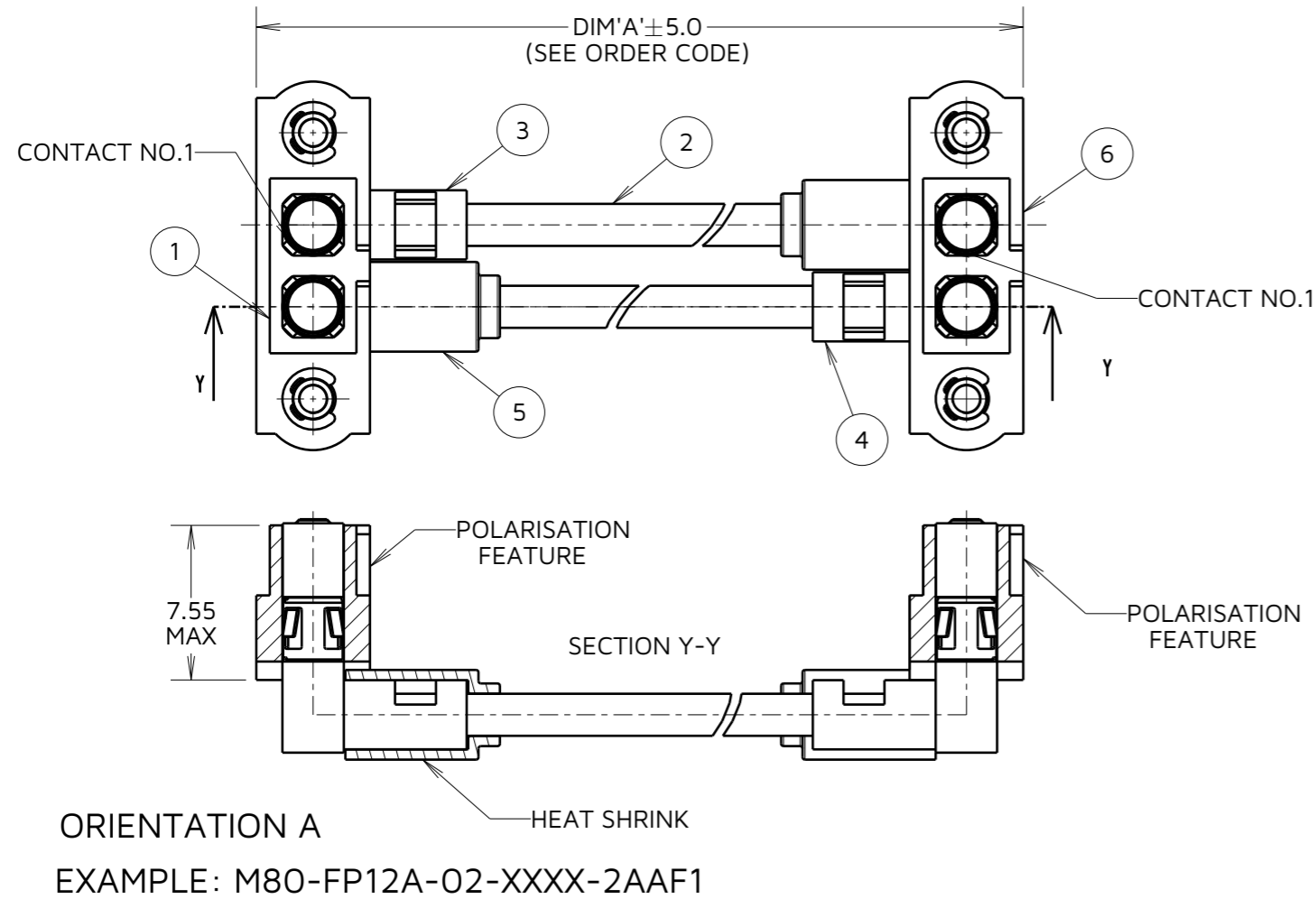
IF IN DOUBT - ASK

©

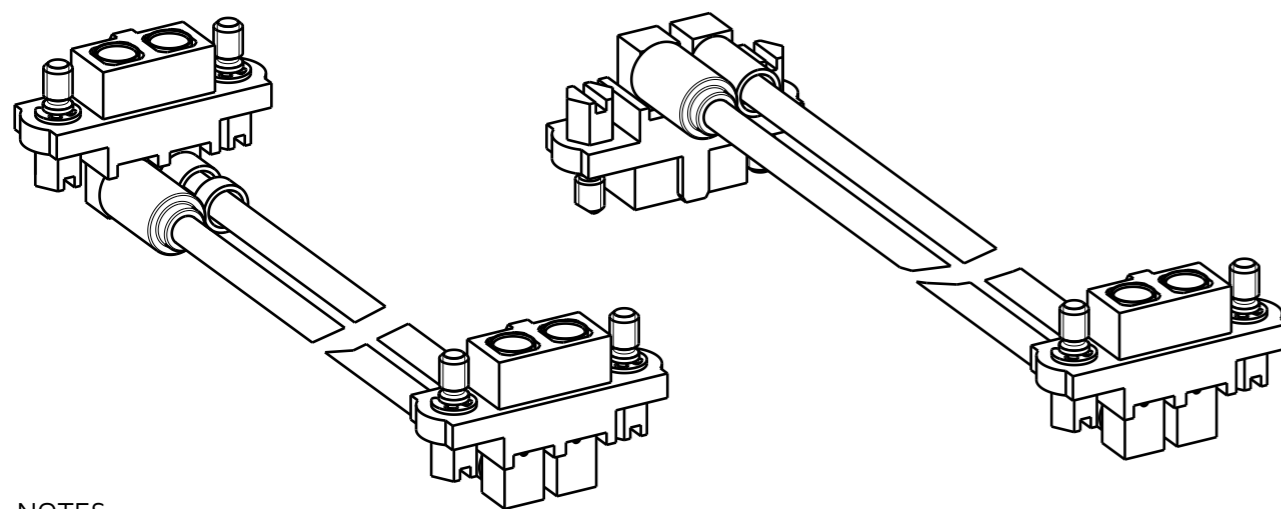
NOT TO SCALE

THIRD ANGLE PROJECTION

ALL DIMENSIONS IN mm



HORIZONTAL-TO-HORIZONTAL CONFIGURATIONS



- NOTES:
24. (X) = BOM ITEM NO, SEE TABLE 1(B) ON SHEET 7
 25. ASSEMBLY VIEW FOR ILLUSTRATIVE PURPOSES ONLY, SEE ORDER CODE FOR POSSIBLE CONFIGURATIONS.
 26. POSSIBLE CONFIGURATIONS:
FEMALE-TO-FEMALE
 27. FOR POSSIBLE CONTACT COMBINATIONS, SEE BOM TABLE ON SHEET 7.
 28. ONLY CONTACTS COMPATIBLE WITH THE SAME WIRE CAN BE COMBINED IN AN ASSEMBLY.

M80-XPXXX-XX-XXXX-XXXXX

<p>GENDER: FEMALE = F MALE = M</p> <p>CONTACT TYPE: POWER = P</p> <p>CONNECTOR FIXING: F1/M1 = 1 M2/M2 = 2 MA = A MU = U</p> <p>CONNECTOR 1 CONTACT: (SEE BOM ITEM 3 FOR = XX CONTACT PART NUMBER)</p>	<p>CONNECTOR FIXING: F1 M1 F2 M2 MA MU</p> <p>CONNECTOR 2 ORIENTATION: A/B = SEE INDIVIDUAL SHEETS FOR ORIENTATIONS</p> <p>CONNECTOR 2 CONTACT: XX = SEE BOM ITEM 4 FOR CONTACT PART NUMBER</p> <p>DIM 'A' LENGTH: 0060 = 60mm MIN 9999 = 9999mm MAX</p>
--	--

TOTAL NO. OF CONTACTS:
02 TO 08 = XX

FC	1	19.12.23	32016
NAME	ISS.	DATE	CN/CO
APPROVED: M.RUDKIN			
CHECKED: R.PORTLOCK			
DRAWN: F.CHRISPINE			
ASSEMBLY DRG:			

HARWIN

www.harwin.com

TOLERANCES
X. = ±1mm
X.X = ±0.50mm
X.XX = ±0.20mm
X.XXX = ±0.01mm
ANGLES = ±5°
UNLESS STATED

THIS DRAWING AND ANY INFORMATION OR DESCRIPTIVE MATTER SET OUT HEREON ARE CONFIDENTIAL AND COPYRIGHT PROPERTY OF THE HARWIN GROUP AND MUST NOT BE DISCLOSED, LOANED, COPIED OR USED FOR MANUFACTURING, TENDERING OR FOR ANY OTHER PURPOSE WITHOUT THEIR WRITTEN PERMISSION.

MATERIAL:

SEE SHEET 7

TITLE:
**DATAMATE DOUBLE-ENDED
POWER CABLE ASSEMBLY**

DRAWING NUMBER:
M80-XPXXX-XX-XXXX-XXXXX

SHT
10
OF
12

Customer Information Sheet

IF IN DOUBT - ASK

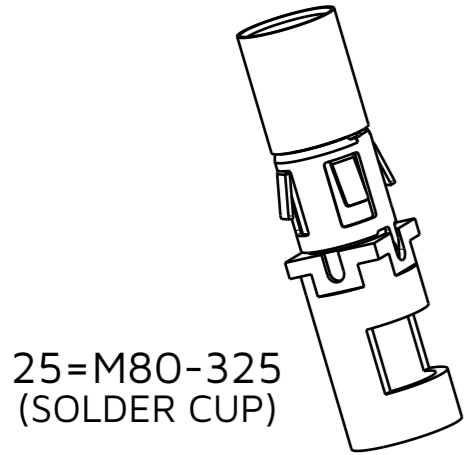
©

NOT TO SCALE

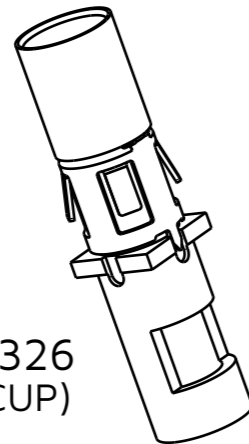
THIRD ANGLE PROJECTION

ALL DIMENSIONS IN mm

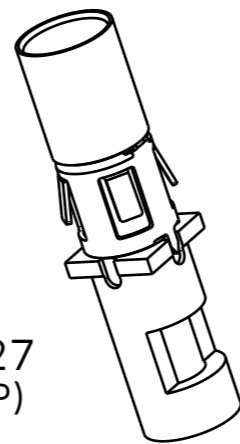
FEMALE STRAIGHT CONTACTS



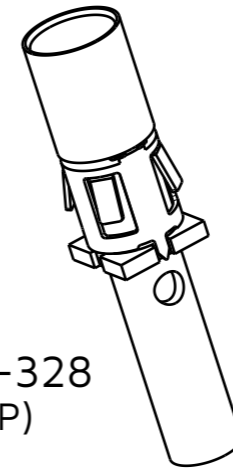
25=M80-325
(SOLDER CUP)



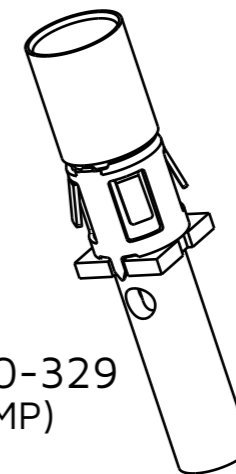
26=M80-326
(SOLDER CUP)



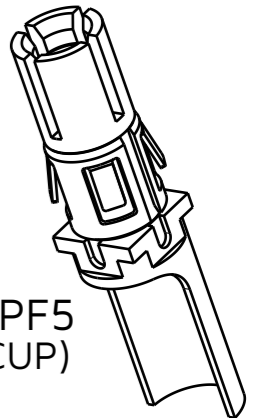
27=M80-327
(SOLDER CUP)



28=M80-328
(CRIMP)

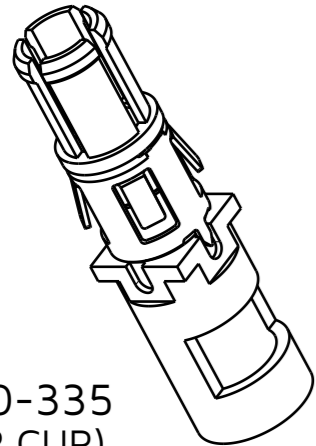


29=M80-329
(CRIMP)

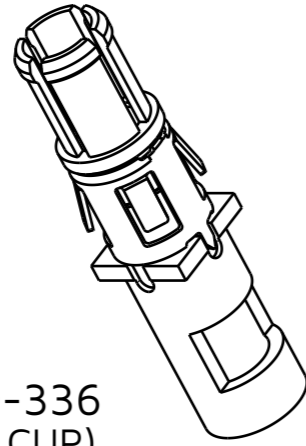


F5=M80-PF5
(SOLDER CUP)

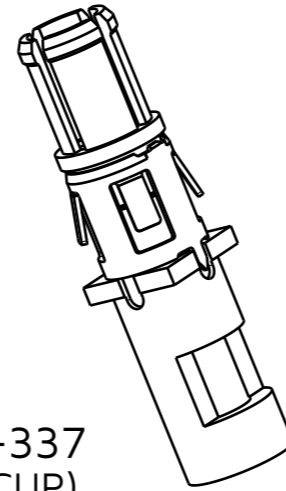
MALE STRAIGHT CONTACTS



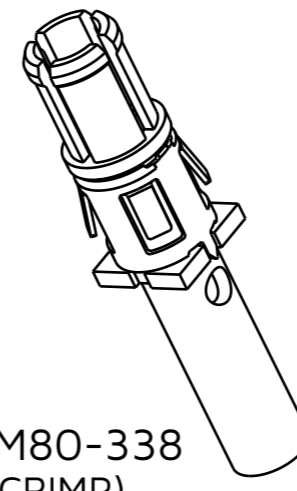
35=M80-335
(SOLDER CUP)



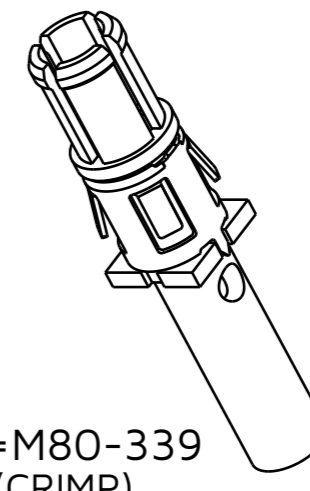
36=M80-336
(SOLDER CUP)



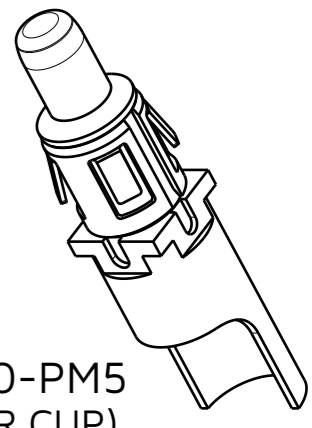
37=M80-337
(SOLDER CUP)



38=M80-338
(CRIMP)

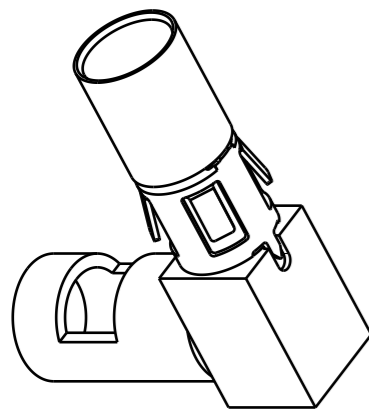


39=M80-339
(CRIMP)

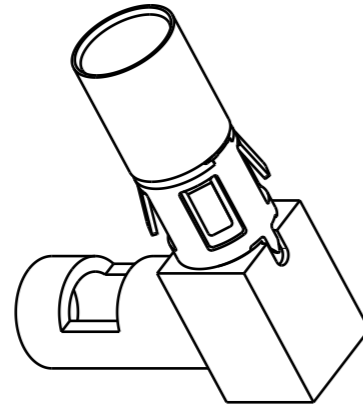


M5=M80-PM5
(SOLDER CUP)

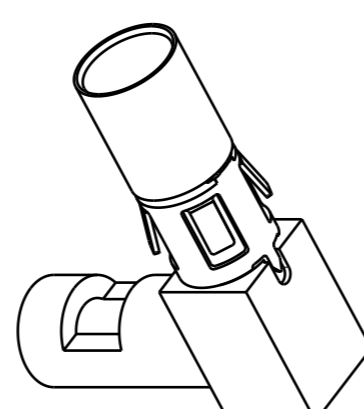
FEMALE HORIZONTAL CONTACTS



2A=M80-32A
(SOLDER CUP)



2B=M80-32B
(SOLDER CUP)



2C=M80-32C
(SOLDER CUP)

M80-XPXXX-XX-XXXX-XXXXX

GENDER: FEMALE= F MALE= M	CONNECTOR FIXING: F1 M1 F2 M2 MA MU
CONTACT TYPE: POWER= P	CONNECTOR 2 ORIENTATION: A/B= SEE INDIVIDUAL SHEETS FOR ORIENTATIONS
CONNECTOR FIXING: F1/M1= 1 M2/M2= 2 MA= A MU= U	CONNECTOR 2 CONTACT: XX= SEE BOM ITEM 4 FOR CONTACT PART NUMBER
CONNECTOR 1 CONTACT: (SEE BOM ITEM 3 FOR= XX CONTACT PART NUMBER)	DIM 'A' LENGTH: 0060= 60mm MIN 9999= 9999mm MAX
TOTAL NO. OF CONTACTS: 02 TO 08 =XX	

FC	1	19.12.23	32016
NAME	ISS.	DATE	CN/CO
APPROVED: M.RUDKIN			
CHECKED: R.PORTLOCK			
DRAWN: F.CHRISPINE			
ASSEMBLY DRG:			

HARWIN

www.harwin.com

TOLERANCES
X. = ±1mm
X.X = ±0.50mm
X.XX = ±0.20mm
X.XXX = ±0.01mm
ANGLES = ±5°
UNLESS STATED

THIS DRAWING AND ANY INFORMATION OR DESCRIPTIVE MATTER SET OUT HEREON ARE CONFIDENTIAL AND COPYRIGHT PROPERTY OF THE HARWIN GROUP AND MUST NOT BE DISCLOSED, LOANED, COPIED OR USED FOR MANUFACTURING, TENDERING OR FOR ANY OTHER PURPOSE WITHOUT THEIR WRITTEN PERMISSION.

MATERIAL:

SEE SHEET 7

TITLE:
**DATAMATE DOUBLE-ENDED
POWER CABLE ASSEMBLY**

DRAWING NUMBER:
M80-XPXXX-XX-XXXX-XXXXX

SHT
11
OF
12

Customer Information Sheet

IF IN DOUBT - ASK

©

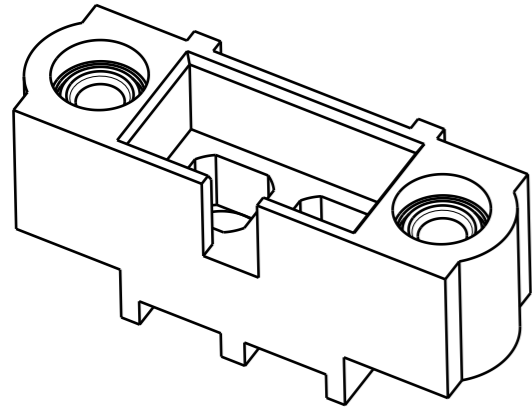
NOT TO SCALE

THIRD ANGLE PROJECTION

ALL DIMENSIONS IN mm

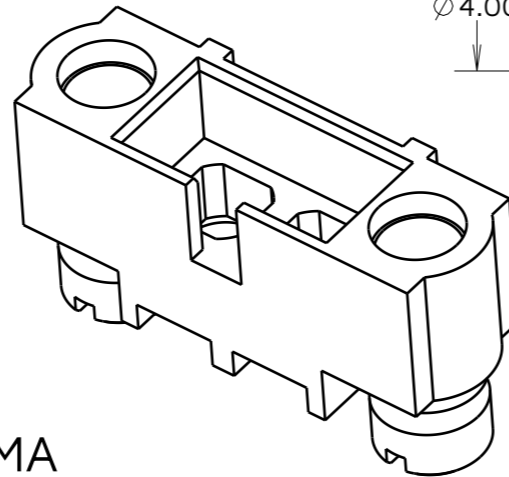
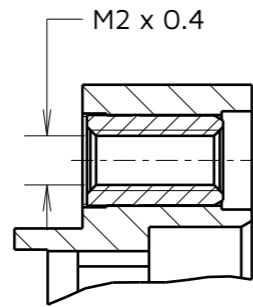
HOUSING FIXING TYPES

MALE FIXING TYPES



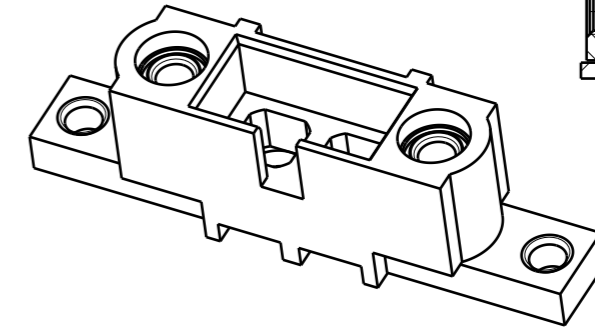
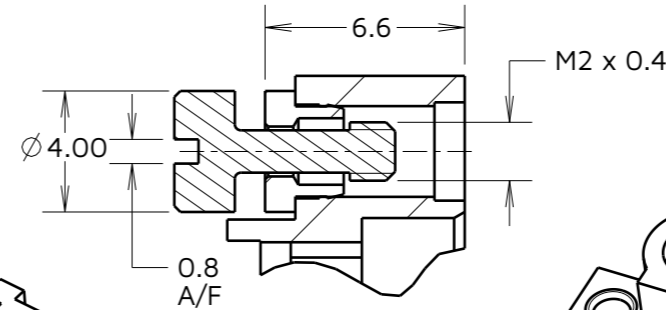
M1

EXAMPLE: M80-273M1-02-00-00



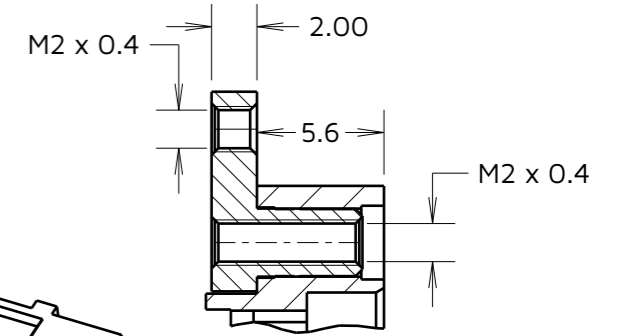
MA

EXAMPLE: M80-273MA-02-00-00

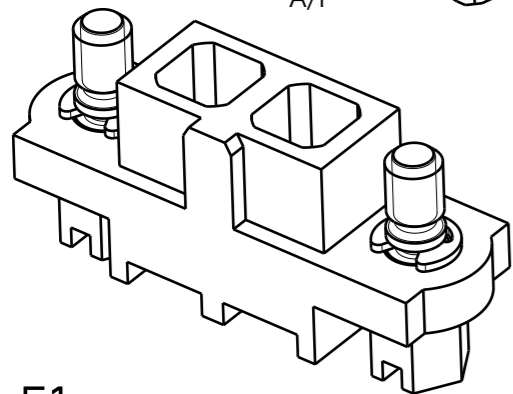


MU

EXAMPLE: M80-273MU-02-00-00

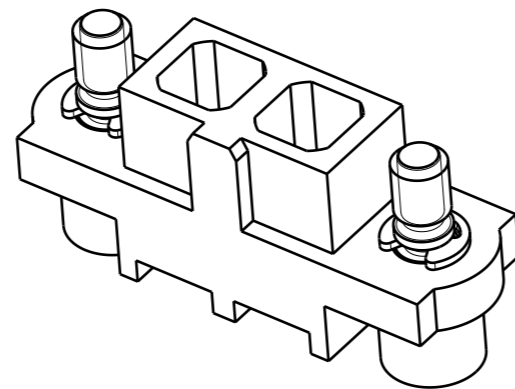
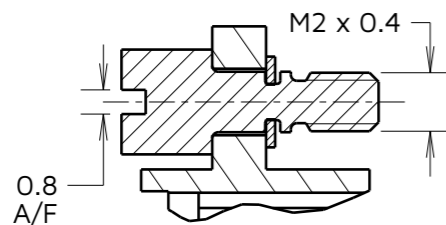


FEMALE FIXING TYPES



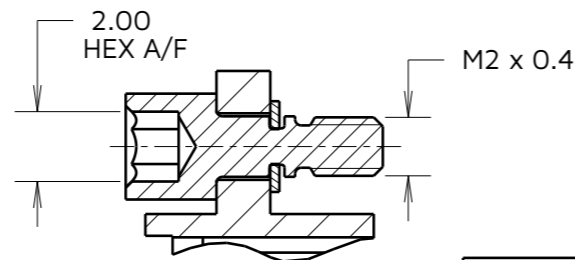
F1

EXAMPLE: M80-263F1-02-00-00



F2

EXAMPLE: M80-263F2-02-00-00



M80-XPXXX-XX-XXXX-XXXXX

<p>GENDER: FEMALE = F MALE = M</p> <p>CONTACT TYPE: POWER = P</p> <p>CONNECTOR FIXING: F1/M1 = 1 M2/M2 = 2 MA = A MU = U</p> <p>CONNECTOR 1 CONTACT: (SEE BOM ITEM 3 FOR = XX CONTACT PART NUMBER)</p>	<p>CONNECTOR FIXING: F1 M1 F2 M2 MA MU</p> <p>CONNECTOR 2 ORIENTATION: A/B = SEE INDIVIDUAL SHEETS FOR ORIENTATIONS</p> <p>CONNECTOR 2 CONTACT: XX = SEE BOM ITEM 4 FOR CONTACT PART NUMBER</p> <p>DIM 'A' LENGTH: 0060 = 60mm MIN 9999 = 9999mm MAX</p>
--	--

TOTAL NO. OF CONTACTS:
02 TO 08 = XX

NOTES:

29. SEE BILL OF MATERIAL ON SHEET 7 AND ORDER CODE FOR FIXING IDENTIFICATION.
30. FURTHER DETAILS (INCLUDING PANEL CUT OUT DIMENSIONS FOR 'MU') CAN BE FOUND ON THE RESPECTIVE CONNECTOR WITH HARDWARE DRAWINGS (EG. M80-263F1XX-XX-XX FOR F1).
31. 2-WAY CONNECTORS ARE SHOWN FOR ILLUSTRATIVE PURPOSES ONLY. SEE ORDER CODE FOR TOTAL No. CONTACTS.

FC	1	19.12.23	32016
NAME	ISS.	DATE	CN/CO
APPROVED: M.RUDKIN			
CHECKED: R.PORTLOCK			
DRAWN: F.CHRISPINE			
ASSEMBLY DRG:			

HARWIN

www.harwin.com

TOLERANCES
 X. = ±1mm
 X.X = ±0.50mm
 X.XX = ±0.20mm
 X.XXX = ±0.01mm
 ANGLES = ±5°
 UNLESS STATED

THIS DRAWING AND ANY INFORMATION OR DESCRIPTIVE MATTER SET OUT HEREON ARE CONFIDENTIAL AND COPYRIGHT PROPERTY OF THE HARWIN GROUP AND MUST NOT BE DISCLOSED, LOANED, COPIED OR USED FOR MANUFACTURING, TENDERING OR FOR ANY OTHER PURPOSE WITHOUT THEIR WRITTEN PERMISSION.

MATERIAL:
SEE SHEET 7

TITLE:
DATAMATE DOUBLE-ENDED POWER CABLE ASSEMBLY

DRAWING NUMBER:
M80-XPXXX-XX-XXXX-XXXXX

SHT
12
OF
12