

Customer Information Sheet

IF IN DOUBT - ASK



NOT TO SCALE

THIRD ANGLE PROJECTION

ALL DIMENSIONS IN mm

TABLE 1: ORDER CODE AND BILL OF MATERIALS (SEE NOTE 1)

M80-XXXXXXXX-XXXXXX	CONNECTOR 1	CONNECTOR 1 CONTACT	WIRE	CONNECTOR 2	CONNECTOR 2 CONTACT
	SEE ORDER CODE FOR TOTAL No. OF CONTACTS				
	1	2	3	4	5

TABLE 2: CONNECTOR TYPE BY PAGE

CONNECTOR TYPE	CONNECTOR TYPE DESCRIPTION	SEE SHEET
C	STANDARD J-TEK	11
	STANDARD J-TEK TWISTED PAIR	12
B	T-CONTACT	13
E	BACKPOTTING WALL - 5mm	14
F	BACKPOTTING WALL - 1mm	
METAL SHIELDED	METAL SHIELDED W/ BRAIDING	15
PLASTIC SHIELDED	PLASTIC SHIELDED NO BRAIDING	16
CONTACT IDENTIFICATION		17
FIXING IDENTIFICATION		18

NOTES:

- FOR MECHANICAL AND ELECTRICAL SPECIFICATIONS, SEE COMPONENT SPECIFICATION C005XX (LATEST ISSUE).
- FOR WIRE SPECIFICATION, GAUGE AND TYPE, SEE COMPONENT SPECIFICATION C049XX (LATEST ISSUE).
- ONLY CONTACTS COMPATIBLE FOR USE WITH THE SAME WIRE CAN BE COMBINED IN AN ASSEMBLY.
- FOR ASSEMBLIES WITH DIFFERING GENDER CONNECTORS, MALE MUST BE REPRESENTED FIRST IN THE PART NUMBER (E.G M80-MC104XXM1-0150F1).
- WIRING CONNECTOR:
CONTACT 1 TO CONTACT 1,
CONTACT 2 TO CONTACT 2, ETC.
- CABLE ASSEMBLIES ARE INDIVIDUALLY PACKED IN BAGS.

ORDER CODE:

M80-XXXXXXXX-XXXXXX

GENDER:
F = FEMALE
M = MALE

CONNECTOR TYPE:
C = STANDARD J-TEK
B = T-CONTACT (22AWG ONLY)
E = BACKPOTTING 5mm WALL
F = BACKPOTTING 1mm WALL

WIRE GAUGE:
1 = 22AWG - 19 STRAND PTFE
2 = 24AWG - 7 STRAND PTFE
3 = 26AWG - 19 STRAND PTFE
4 = 28AWG - 7 STRAND PTFE
5 = 30AWG - 7 STRAND PTFE

TOTAL NUMBER OF CONTACTS:
04-50 (EVEN ONLY)

DIM 'A'

CABLE LENGTH:
0060 = 0060mm MIN
9999 = 9999mm MAX

FIXING STYLE:

FO = NO HARDWARE (FEMALE)
F1 = HEX SLOTTED JACKSCREW
F2 = HEX SOCKET JACKSCREW
FC = 101LOK
MO = NO HARDWARE (MALE)
M1 = JACKSCREW NUT
MA = REVERSE FIX SLOTTED JACKSCREW
MB = REVERSE FIX SOCKET JACKSCREW
MC = 101LOK RETAINER

WIRE STYLE:

05 = WHITE
98 = BLACK
99 = RED
67 = TWISTED
69 = SHIELDED
TIN
70 = SHIELDED
SILVER
71 = SHIELDED & TWISTED - TIN
72 = SHIELDED & TWISTED - SILVER
73 = PLASTIC SHIELDED
74 = PLASTIC SHIELDED & TWISTED

HARWIN

www.harwin.com

TOLERANCES

X. = $\pm 1\text{mm}$
X.X = $\pm 0.50\text{mm}$
X.XX = $\pm 0.20\text{mm}$
X.XXX = $\pm 0.01\text{mm}$

ANGLES = $\pm 5^\circ$
UNLESS STATED

THIS DRAWING AND ANY INFORMATION OR DESCRIPTIVE MATTER SET OUT HEREON ARE CONFIDENTIAL AND COPYRIGHT PROPERTY OF THE HARWIN GROUP AND MUST NOT BE DISCLOSED, LOANED, COPIED OR USED FOR MANUFACTURING, TENDERING OR FOR ANY OTHER PURPOSE WITHOUT THEIR WRITTEN PERMISSION.

MATERIAL & FINISH:

SEE ABOVE

TITLE:

M80 J-TEK DOUBLE-ENDED
CABLE ASSEMBLY

DRAWING NUMBER:

M80-XXXXXXXX-XXXXXX

SHT
10
OF
18

RTP	2	14.04.25	35978
NAME	ISS.	DATE	CN/CO
APPROVED:		R.PORTLOCK	
CHECKED:		R.ALEXANDER	
DRAWN:		R.PORTLOCK	

Customer Information Sheet

IF IN DOUBT - ASK

©

NOT TO SCALE

THIRD ANGLE PROJECTION

ALL DIMENSIONS IN mm

CONNECTOR TYPE: C - STANDARD J-TEK

EXAMPLE PART No.
M80-FC10405F1-0150F1

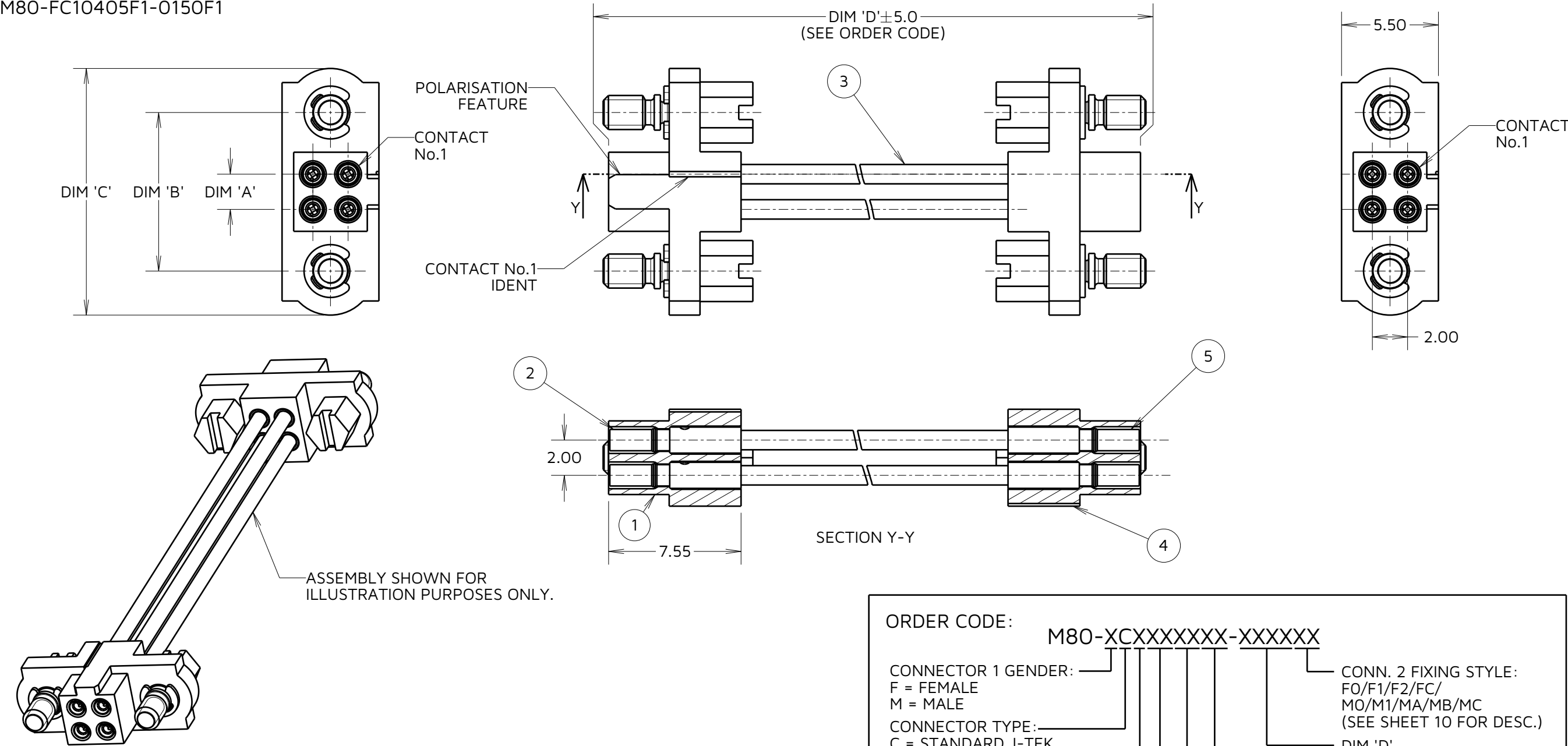


TABLE 3: DIMENSION CALCULATIONS	
DIMENSION	MEASUREMENT
DIM 'A'	TOTAL No. OF CONTACTS - 2.00
DIM 'B'	TOTAL No. OF CONTACTS + 5.00
DIM 'C'	TOTAL No. OF CONTACT + 10.0

NOTES:
7. ASSEMBLIES SHOWN FOR ILLUSTRATIVE PURPOSES AND WILL DIFFER ON A PART NUMBER BASIS. SEE ORDER CODE ON THIS SHEET.

ORDER CODE: M80-XCXXXXXXXX-XXXXXX

CONNECTOR 1 GENDER: F = FEMALE
M = MALE
CONNECTOR TYPE: C = STANDARD J-TEK
WIRE GAUGE: NO RESTRICTIONS
(SEE ORDER CODE ON SHEET 10)
TOTAL NUMBER OF CONTACTS: 04-50 (EVEN ONLY)
WIRE STYLE: 05 = WHITE
67 = TWISTED
98 = BLACK
99 = RED
CONN. 2 FIXING STYLE: FO/F1/F2/FC/
MO/M1/MA/MB/MC
(SEE SHEET 10 FOR DESC.)
DIM 'D'
CABLE LENGTH: 0060 = 0060mm MIN
9999 = 9999mm MAX
CONN. 1 FIXING STYLE: FO/F1/F2/FC/
MO/M1/MA/MB/MC
(SEE SHEET 10 FOR DESC.)

RTP	2	14.04.25	35978
NAME	ISS.	DATE	CN/CO
APPROVED: R.PORTLOCK			
CHECKED: R.ALEXANDER			
DRAWN: R.PORTLOCK			

HARWIN
www.harwin.com

TOLERANCES
X. = $\pm 1\text{mm}$
X.X = $\pm 0.50\text{mm}$
X.XX = $\pm 0.20\text{mm}$
X.XXX = $\pm 0.01\text{mm}$
ANGLES = $\pm 5^\circ$
UNLESS STATED

THIS DRAWING AND ANY INFORMATION OR DESCRIPTIVE MATTER SET OUT HEREON ARE CONFIDENTIAL AND COPYRIGHT PROPERTY OF THE HARWIN GROUP AND MUST NOT BE DISCLOSED, LOANED, COPIED OR USED FOR MANUFACTURING, TENDERING OR FOR ANY OTHER PURPOSE WITHOUT THEIR WRITTEN PERMISSION.

MATERIAL & FINISH:
SEE SHEET 10

TITLE:
M80 J-TEK DOUBLE-ENDED
CABLE ASSEMBLY

DRAWING NUMBER:
M80-XXXXXXXX-XXXXXX

SHT
11
OF
18

Customer Information Sheet

IF IN DOUBT - ASK

©

NOT TO SCALE

THIRD ANGLE PROJECTION

ALL DIMENSIONS IN mm

CONNECTOR TYPE: C - STANDARD J-TEK TWISTED PAIR

EXAMPLE PART No.
M80-FC10467F1-0300F1

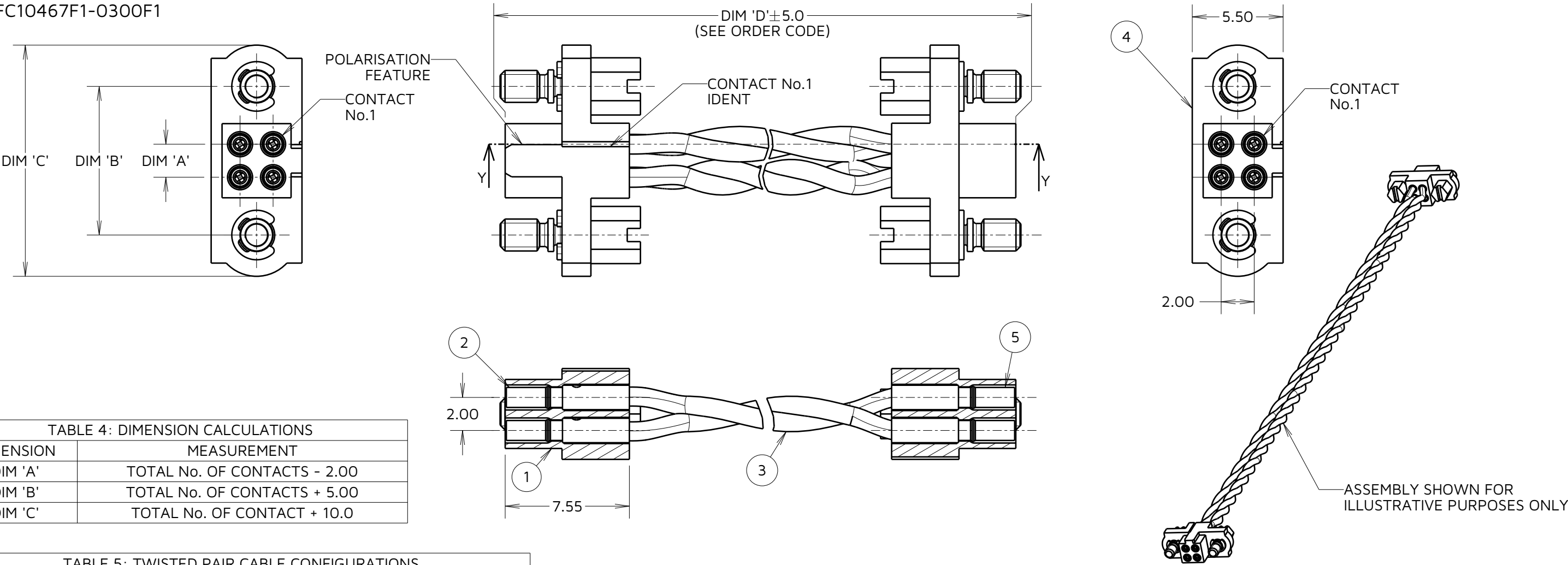


TABLE 4: DIMENSION CALCULATIONS	
DIMENSION	MEASUREMENT
DIM 'A'	TOTAL No. OF CONTACTS - 2.00
DIM 'B'	TOTAL No. OF CONTACTS + 5.00
DIM 'C'	TOTAL No. OF CONTACT + 10.0

TABLE 5: TWISTED PAIR CABLE CONFIGURATIONS				
WIRING FOR EXAMPLE PART No. M80-FC10467F1-0300F1				
TWISTED PAIR No.	CONNECTOR 1 PIN No.	CONNECTOR 2 PIN No.	TURNS PER INCH	WIRE COLOUR
1	1	1	3	WHITE & GREEN
	3	3		
2	2	2	2	WHITE & RED
	4	4		
FOR CONNECTORS WITH MORE THAN 4 SIGNAL CONTACTS, CONTINUE TWIST & CABLE PIN OUT CONVENTION IN THE SAME PATTERN. (I.E. TWISTED PAIR BETWEEN CONTACT X & CONTACT X) THIS ALTERNATES BETWEEN 3TPI (WHITE & GREEN) & 2TPI (WHITE & RED)				

ORDER CODE:

M80-XCXXX67XX-XXXXXX

CONNECTOR 1 GENDER:

F = FEMALE

M = MALE

CONNECTOR TYPE:

C = STANDARD J-TEK

WIRE GAUGE:

NO RESTRICTIONS

(SEE ORDER CODE ON SHEET 10)

TOTAL NUMBER OF CONTACTS:

04-50 (EVEN ONLY)

WIRE STYLE:

67 = TWISTED

CONN. 2 FIXING STYLE:

F0/F1/F2/FC/
M0/M1/MA/MB/MC
(SEE SHEET 10 FOR DESC.)

DIM 'A'

CABLE LENGTH:

0060 = 0060mm MIN

9999 = 9999mm MAX

CONN. 1 FIXING STYLE:

F0/F1/F2/FC/
M0/M1/MA/MB/MC
(SEE SHEET 10 FOR DESC.)

NOTES:

- ASSEMBLIES SHOWN FOR ILLUSTRATIVE PURPOSES AND WILL DIFFER ON A PART NUMBER BASIS. SEE ORDER CODE ON THIS SHEET. SEE TABLE 5 FOR TWISTED PAIR WIRING CONVENTION.
- TWISTED PAIR WIRES CAN BE APPLIED TO ALL CONNECTOR TYPES AND CONTACTS SPECIFIED ON THIS DRAWING. J-TEK ABOVE ONLY SHOWN AS AN EXAMPLE.

HARWIN

www.harwin.com

TOLERANCES

X. = ±1mm

X.X = ±0.50mm

X.XX = ±0.20mm

X.XXX = ±0.01mm

ANGLES = ±5°

UNLESS STATED

THIS DRAWING AND ANY INFORMATION OR DESCRIPTIVE MATTER SET OUT HEREON ARE CONFIDENTIAL AND COPYRIGHT PROPERTY OF THE HARWIN GROUP AND MUST NOT BE DISCLOSED, LOANED, COPIED OR USED FOR MANUFACTURING, TENDERING OR FOR ANY OTHER PURPOSE WITHOUT THEIR WRITTEN PERMISSION.

MATERIAL & FINISH:

SEE SHEET 10

TITLE:

M80 J-TEK DOUBLE ENDED
CABLE ASSEMBLY

DRAWING NUMBER:

M80-XXXXXXXX-XXXXXX

SHT

12

OF

18

RTP	2	14.04.25	35978
NAME	ISS.	DATE	CN/CO
APPROVED: R.PORTLOCK			
CHECKED: R.ALEXANDER			
DRAWN: R.PORTLOCK			

Customer Information Sheet

IF IN DOUBT - ASK

©

NOT TO SCALE

THIRD ANGLE PROJECTION

ALL DIMENSIONS IN mm

CONNECTOR TYPE: B - T-CONTACT

EXAMPLE PART No.
M80-FB10405F1-0150F1

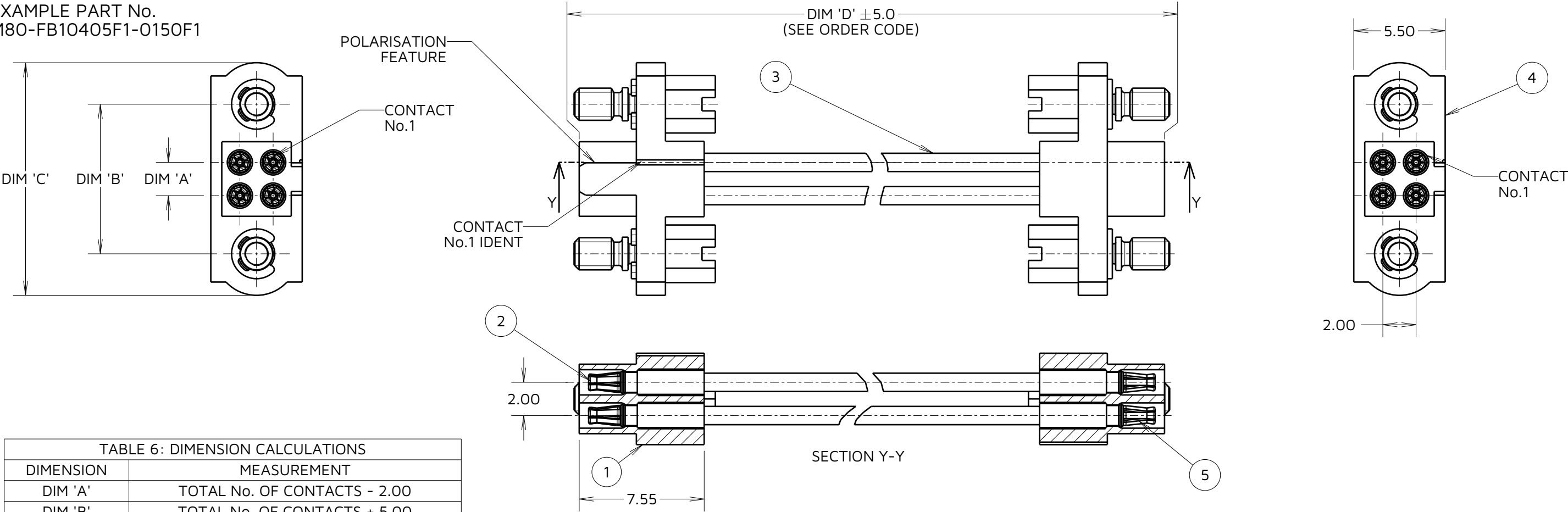


TABLE 6: DIMENSION CALCULATIONS

DIMENSION	MEASUREMENT
DIM 'A'	TOTAL No. OF CONTACTS - 2.00
DIM 'B'	TOTAL No. OF CONTACTS + 5.00
DIM 'C'	TOTAL No. OF CONTACT + 10.0

ORDER CODE:

M80-FBXXXXXXXX-XXXXFX

CONNECTOR 1 GENDER:

F = FEMALE

CONNECTOR TYPE:

B = T-CONTACT

WIRE GAUGE:

1 - 22AWG ONLY

(SEE ORDER CODE ON SHEET 10)

TOTAL NUMBER OF CONTACTS:

04-50 (EVEN ONLY)

WIRE STYLE:

05 = WHITE

67 = TWISTED

98 = BLACK

99 = RED

CONN. 2 FIXING STYLE:

F0/F1/F2/FC
(SEE SHEET 10 FOR DESC.)

DIM 'D'

CABLE LENGTH:

0060 = 0060mm MIN

9999 = 9999mm MAX

CONN. 1 FIXING STYLE:

F0/F1/F2/FC

(SEE SHEET 10 FOR DESC.)

NOTES:
10. ASSEMBLIES SHOWN FOR ILLUSTRATIVE PURPOSES AND WILL DIFFER ON A PART NUMBER BASIS.

HARWIN

www.harwin.com

TOLERANCES

X. = ±1mm

X.X = ±0.50mm

X.XX = ±0.20mm

X.XXX = ±0.01mm

ANGLES = ±5°

UNLESS STATED

THIS DRAWING AND ANY INFORMATION OR DESCRIPTIVE MATTER SET OUT HEREON ARE CONFIDENTIAL AND COPYRIGHT PROPERTY OF THE HARWIN GROUP AND MUST NOT BE DISCLOSED, LOANED, COPIED OR USED FOR MANUFACTURING, TENDERING OR FOR ANY OTHER PURPOSE WITHOUT THEIR WRITTEN PERMISSION.

MATERIAL & FINISH:

SEE SHEET 10

TITLE:

M80 J-TEK DOUBLE-ENDED
CABLE ASSEMBLY

DRAWING NUMBER:

M80-XXXXXXXX-XXXXXX

RTP	2	14.04.25	35978
NAME	ISS.	DATE	CN/CO
APPROVED: R.PORTLOCK			
CHECKED: R.ALEXANDER			
DRAWN: R.PORTLOCK			

SHT
13
OF
18

Customer Information Sheet

IF IN DOUBT - ASK

©

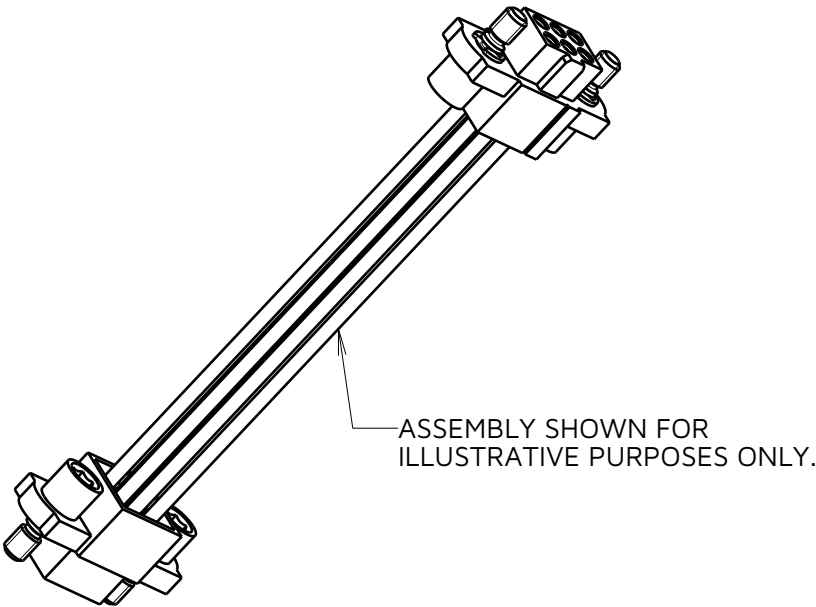
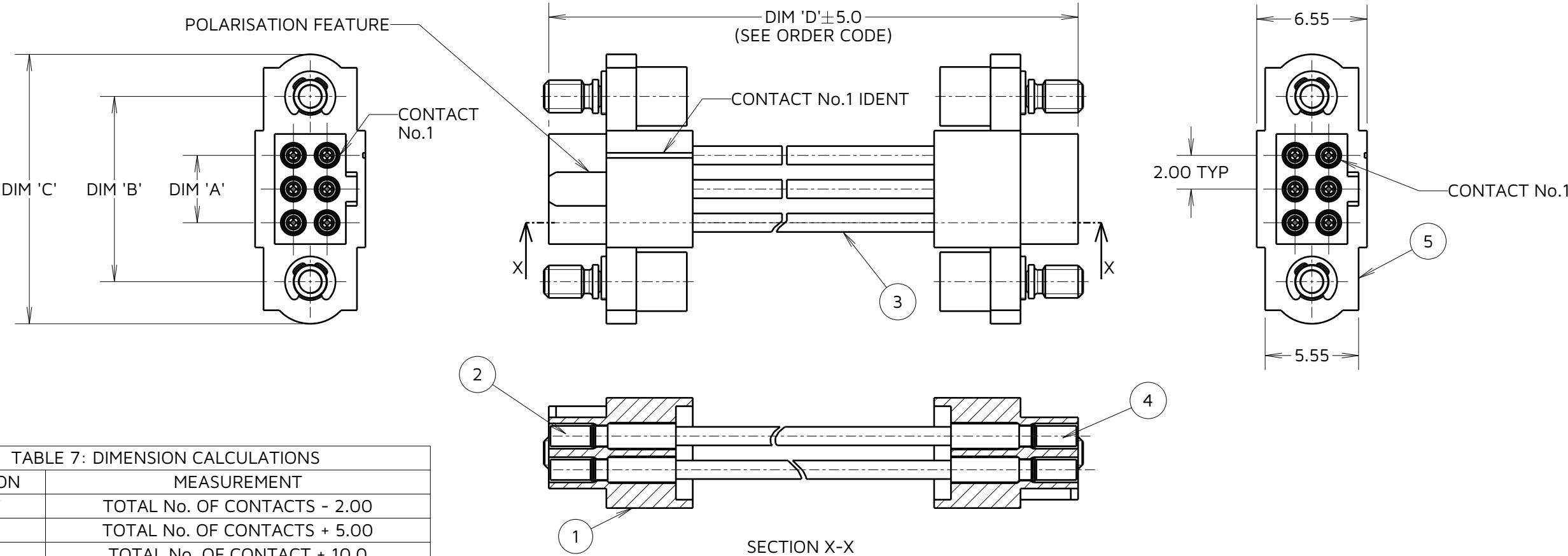
NOT TO SCALE

THIRD ANGLE PROJECTION

ALL DIMENSIONS IN mm

CONNECTOR TYPE: E & F - EXTENDED POTTING WALL

EXAMPLE PART No.
M80-FF10405F1-0150F1



ORDER CODE:

M80-XXXXXXXXXX-XXXXFX

CONNECTOR 1 GENDER:
F = FEMALE
M = MALE

CONNECTOR TYPE:
E = 5mm POTTING WALL
F = 1mm POTTING WALL

WIRE GAUGE:
NO RESTRICTIONS
(SEE ORDER CODE ON SHEET 10)

TOTAL NUMBER OF CONTACTS:
04-50 (EVEN ONLY)

WIRE STYLE:
05 = WHITE
67 = TWISTED
98 = BLACK
99 = RED

CONN. 2 FIXING STYLE:
FO/F1/F2/FC/
MO/M1/MA/MB/MC
(SEE SHEET 10 FOR DESC.)

DIM 'D'
CABLE LENGTH:
0060 = 0060mm MIN
9999 = 9999mm MAX

CONN. 1 FIXING STYLE:
FO/F1/F2/FC/
MO/M1/MA/MB/MC
(SEE SHEET 10 FOR DESC.)

NOTES:
11. ASSEMBLIES SHOWN FOR ILLUSTRATIVE PURPOSES AND WILL DIFFER ON A PART NUMBER BASIS. SEE ORDER CODE ON THIS SHEET AND BILL OF MATERIALS ON SHEET 8.

HARWIN

www.harwin.com

TOLERANCES
X. = ±1mm
X.X = ±0.50mm
X.XX = ±0.20mm
X.XXX = ±0.01mm
ANGLES = ±5°
UNLESS STATED

THIS DRAWING AND ANY INFORMATION OR DESCRIPTIVE MATTER SET OUT HEREON ARE CONFIDENTIAL AND COPYRIGHT PROPERTY OF THE HARWIN GROUP AND MUST NOT BE DISCLOSED, LOANED, COPIED OR USED FOR MANUFACTURING, TENDERING OR FOR ANY OTHER PURPOSE WITHOUT THEIR WRITTEN PERMISSION.

MATERIAL & FINISH:

SEE SHEET 10

TITLE:
M80 J-TEK DOUBLE ENDED
CABLE ASSEMBLY

DRAWING NUMBER:
M80-XXXXXXXXXX-XXXXXX

SHT
14
OF
18

RTP	2	14.04.25	35978
NAME	ISS.	DATE	CN/CO
APPROVED: R.PORTLOCK			
CHECKED: R.ALEXANDER			
DRAWN: R.PORTLOCK			

Customer Information Sheet

IF IN DOUBT - ASK

©

NOT TO SCALE

THIRD ANGLE PROJECTION

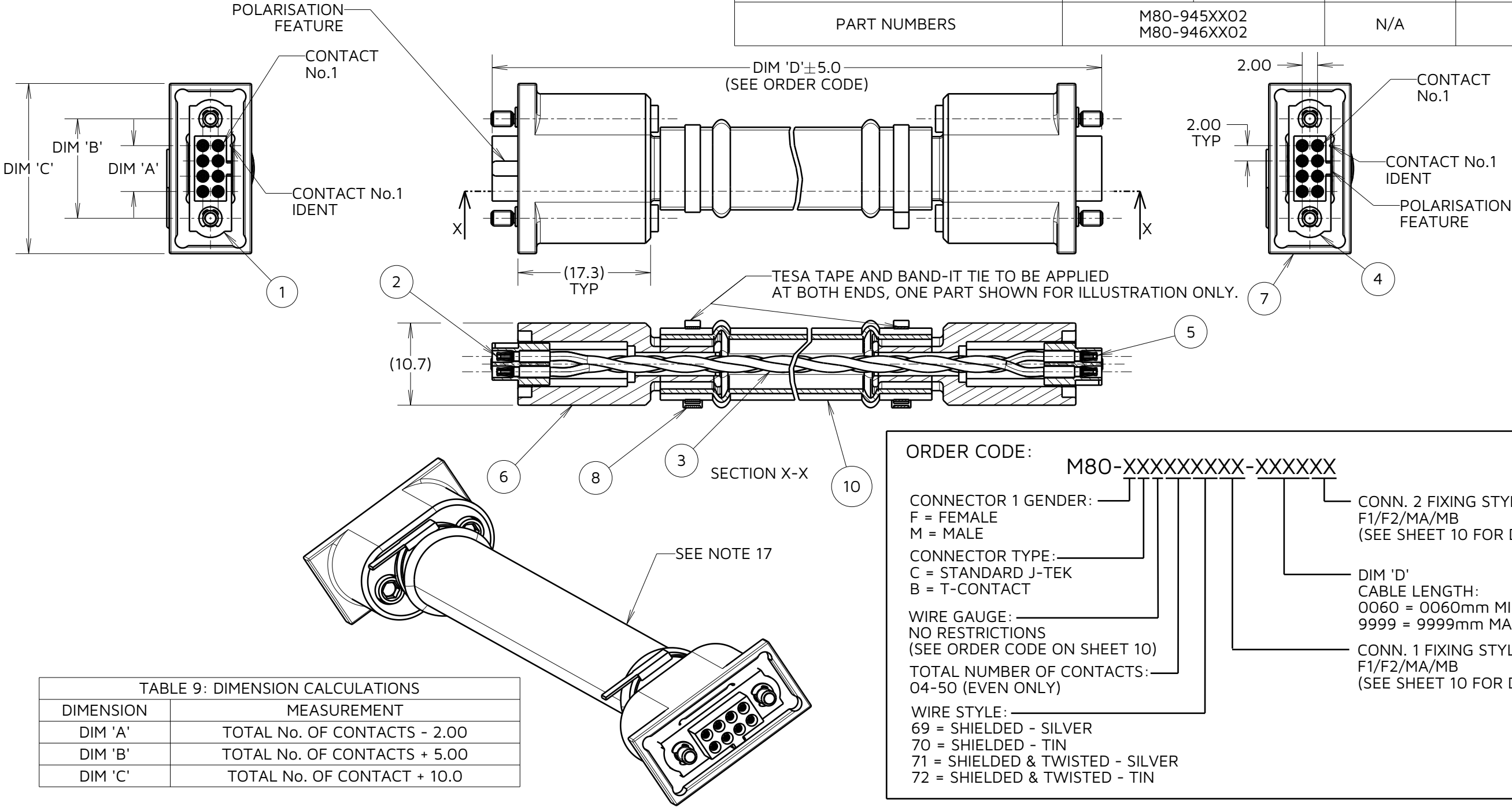
ALL DIMENSIONS IN mm

CONNECTOR TYPE: SHIELDED ASSEMBLIES

EXAMPLE PART No.
M80-FC10871F1-0150F1

TABLE 8: BILL OF MATERIALS
ADDITIONAL ITEMS FOR SHIELDED ASSEMBLIES

M80-XXXXXXXXX-XXXXXX	CONNECTOR 1 BACKSHELL KIT	CONNECTOR 2 BACKSHELL KIT	BAND-IT TIE	TESA TAPE	BRAIDING
	SEE ORDER CODE FOR TOTAL No. OF SIGNAL AND SPECIAL CONTACTS				
	6	7	8	9	10
PART NUMBERS	M80-945XX02 M80-946XX02		N/A	N/A	SEE NOTE 2 ON SHEET 9



ORDER CODE:

M80-XXXXXXXXX-XXXXXX

CONNECTOR 1 GENDER:

F = FEMALE
M = MALE

CONNECTOR TYPE:

C = STANDARD J-TEK
B = T-CONTACT

WIRE GAUGE:

NO RESTRICTIONS
(SEE ORDER CODE ON SHEET 10)

TOTAL NUMBER OF CONTACTS:

04-50 (EVEN ONLY)

WIRE STYLE:

69 = SHIELDED - SILVER
70 = SHIELDED - TIN
71 = SHIELDED & TWISTED - SILVER
72 = SHIELDED & TWISTED - TIN

CONN. 2 FIXING STYLE:

F1/F2/MA/MB
(SEE SHEET 10 FOR DESC.)

DIM 'D'

CABLE LENGTH:
0060 = 0060mm MIN
9999 = 9999mm MAX

CONN. 1 FIXING STYLE:

F1/F2/MA/MB
(SEE SHEET 10 FOR DESC.)

TABLE 9: DIMENSION CALCULATIONS

DIMENSION	MEASUREMENT
DIM 'A'	TOTAL No. OF CONTACTS - 2.00
DIM 'B'	TOTAL No. OF CONTACTS + 5.00
DIM 'C'	TOTAL No. OF CONTACT + 10.0

NOTES:

12. ASSEMBLIES SHOWN FOR ILLUSTRATIVE PURPOSES AND WILL DIFFER ON A PART NUMBER BASIS. SEE ORDER CODE ON THIS SHEET.
13. FOR BACKSHELL DIMENSIONS, SEE DRAWING M80-946XX02.

HARWIN

www.harwin.com

TOLERANCES

X. = $\pm 1\text{mm}$
X.X = $\pm 0.50\text{mm}$
X.XX = $\pm 0.20\text{mm}$
X.XXX = $\pm 0.01\text{mm}$

ANGLES = $\pm 5^\circ$

UNLESS STATED

THIS DRAWING AND ANY INFORMATION OR DESCRIPTIVE MATTER SET OUT HEREON ARE CONFIDENTIAL AND COPYRIGHT PROPERTY OF THE HARWIN GROUP AND MUST NOT BE DISCLOSED, LOANED, COPIED OR USED FOR MANUFACTURING, TENDERING OR FOR ANY OTHER PURPOSE WITHOUT THEIR WRITTEN PERMISSION.

MATERIAL & FINISH:

SEE SHEET 10

TITLE:

M80 J-TEK DOUBLE ENDED
CABLE ASSEMBLY

DRAWING NUMBER:

M80-XXXXXXXXX-XXXXXX

SHT

15

OF

18

RTP	2	14.04.25	35978
NAME	ISS.	DATE	CN/CO
APPROVED: R.PORTLOCK			
CHECKED: R.ALEXANDER			
DRAWN: R.PORTLOCK			

Customer Information Sheet

IF IN DOUBT - ASK

©

NOT TO SCALE

THIRD ANGLE PROJECTION

ALL DIMENSIONS IN mm

CONNECTOR TYPE: PLASTIC SHIELDED ASSEMBLIES

EXAMPLE PART No.
M80-FC10673F1-0150F1

TABLE 10: BILL OF MATERIALS ADDITIONAL ITEMS FOR PLASTIC SHIELDED ASSEMBLIES		
M80-XXXXXXXXX-XXXXXX	CONNECTOR 1 BACKSHELL KIT	CONNECTOR 2 BACKSHELL KIT
	SEE ORDER CODE FOR TOTAL No. OF SIGNAL AND SPECIAL CONTACTS	
	6	7
PART NUMBERS		
M80-944XX00 M80-945XX00		

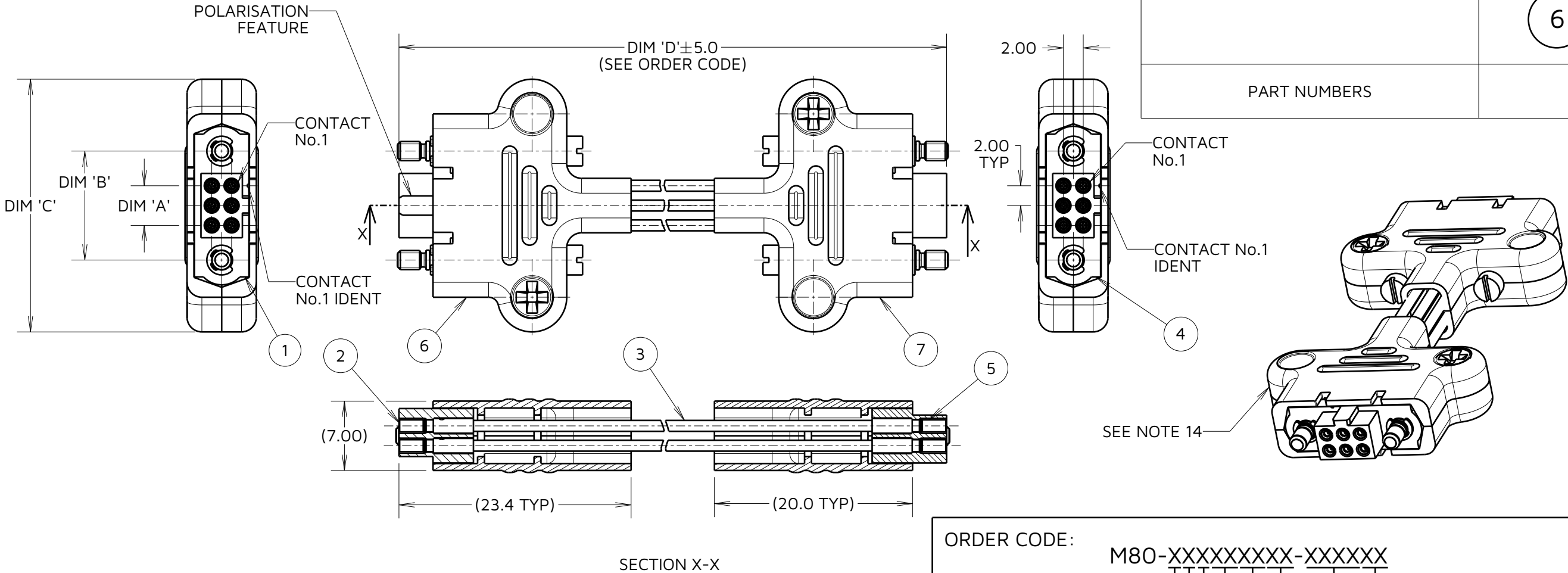


TABLE 11: DIMENSION CALCULATIONS	
DIMENSION	MEASUREMENT
DIM 'A'	TOTAL No. OF CONTACTS - 2.00
DIM 'B'	TOTAL No. OF CONTACTS + 5.00
DIM 'C'	TOTAL No. OF CONTACT + 19.5

ORDER CODE:

M80-XXXXXXXXX-XXXXXX

CONNECTOR 1 GENDER:
F = FEMALE
M = MALE

CONNECTOR TYPE:
C = STANDARD J-TEK
B = T-CONTACT (22AWG ONLY)

WIRE GAUGE:
NO RESTRICTIONS
(SEE ORDER CODE ON SHEET 10)
TOTAL NUMBER OF CONTACTS:
04-50 (EVEN ONLY)

WIRE STYLE:
73 = PLASTIC SHIELDED
74 = PLASTIC SHIELDED & TWISTED

CONN. 2 FIXING STYLE:
F1/F2/MA/MB
(SEE SHEET 10 FOR DESC.)

DIM 'D'
CABLE LENGTH:
0060 = 0060mm MIN
9999 = 9999mm MAX

CONN. 1 FIXING STYLE:
F1/F2/MA/MB
(SEE SHEET 10 FOR DESC.)

- NOTES:
14. ASSEMBLIES SHOWN FOR ILLUSTRATIVE PURPOSES AND WILL DIFFER ON A PART NUMBER BASIS. SEE ORDER CODE ON THIS SHEET.
15. FOR BACKSHELL DIMENSIONS, SEE RESPECTIVE DRAWINGS (TABLE 9).

HARWIN

www.harwin.com

TOLERANCES
X. = ±1mm
X.X = ±0.50mm
X.XX = ±0.20mm
X.XXX = ±0.01mm
ANGLES = ±5°
UNLESS STATED

THIS DRAWING AND ANY INFORMATION OR DESCRIPTIVE MATTER SET OUT HEREON ARE CONFIDENTIAL AND COPYRIGHT PROPERTY OF THE HARWIN GROUP AND MUST NOT BE DISCLOSED, LOANED, COPIED OR USED FOR MANUFACTURING, TENDERING OR FOR ANY OTHER PURPOSE WITHOUT THEIR WRITTEN PERMISSION.

MATERIAL & FINISH:

SEE SHEET 10

TITLE:
**M80 J-TEK DOUBLE ENDED
CABLE ASSEMBLY**

DRAWING NUMBER:
M80-XXXXXXXXX-XXXXXX

SHT
16
OF
18

RTP	2	14.04.25	35978
NAME	ISS.	DATE	CN/CO
APPROVED: R.PORTLOCK			
CHECKED: R.ALEXANDER			
DRAWN: R.PORTLOCK			

Customer Information Sheet

IF IN DOUBT - ASK

©

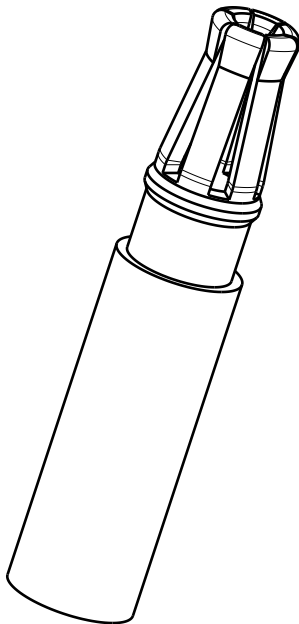
NOT TO SCALE

THIRD ANGLE PROJECTION

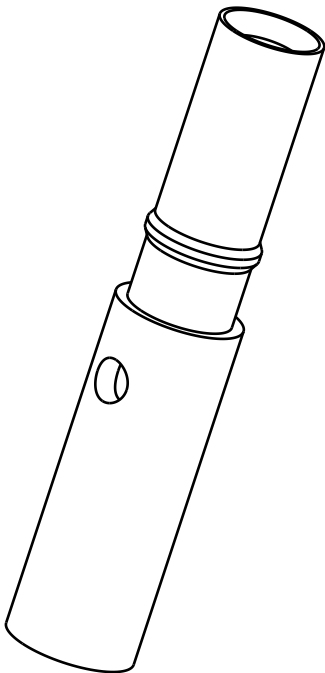
ALL DIMENSIONS IN mm

CONTACT IDENTIFICATION SHEET

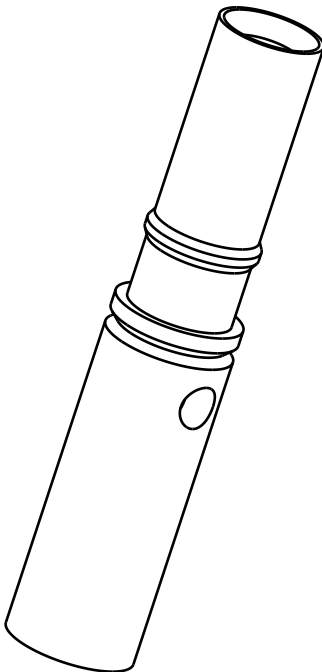
FEMALE CONTACTS



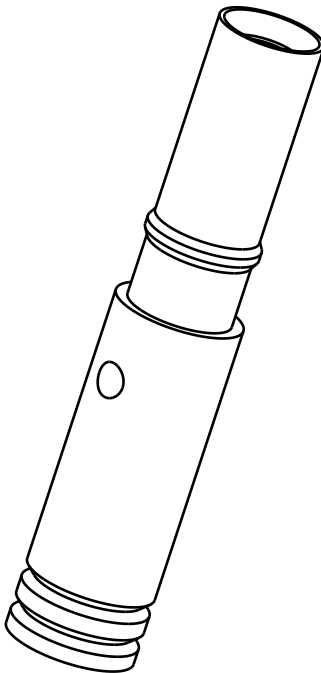
M80-2060005



M80-0110005

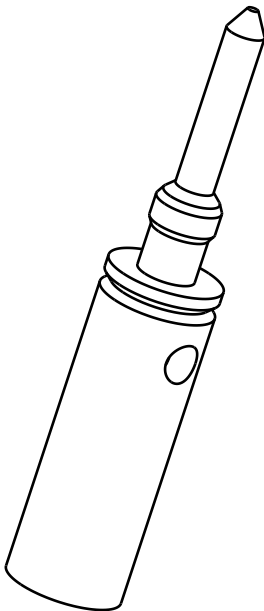


M80-0130005

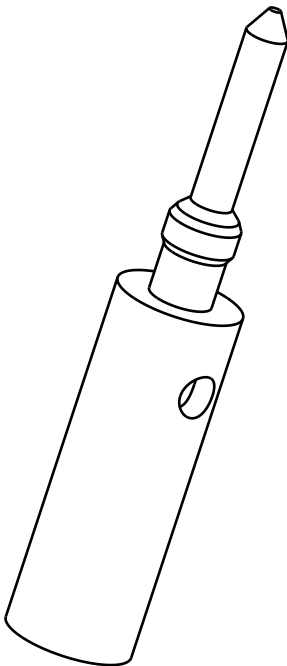


M80-0190005

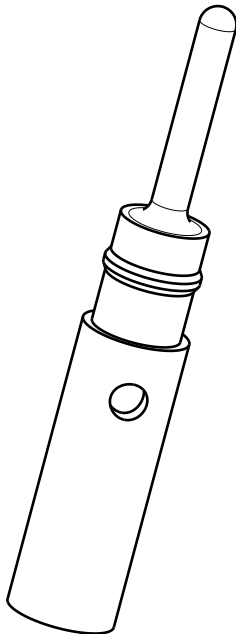
MALE CONTACTS



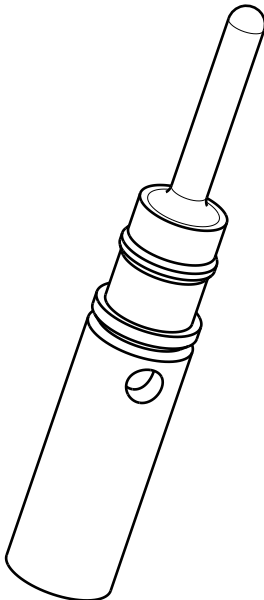
M80-1950005



M80-1940005



M80-0400005



M80-0410005

TABLE 11: CONTACT COMPATIBILITY

CONTACT PART No.	CONTACT GENDER	COMPATIBLE CONNECTOR STYLE(S) (SEE SHEET 10 ORDER CODE)	COMPATIBLE WIRE GAUGE(S)
M80-2060005	FEMALE	B ONLY	22AWG
M80-0110005			22AWG
M80-0130005			24-28AWG
M80-0190005			28-30AWG
M80-1940005	MALE	C/E/F	22AWG
M80-1950005			24-28AWG
M80-0400005			22AWG
M80-0410005			24-28AWG

NOTES:
16. SEE TABLE 11 FOR POSSIBLE CONTACT CONFIGURATION.
17. ONLY CONTACTS COMPATIBLE WITH THE SAME WIRES
CAN BE USED IN AN ASSEMBLY.

HARWIN

www.harwin.com

TOLERANCES
X. = ±1mm
X.X = ±0.50mm
X.XX = ±0.20mm
X.XXX = ±0.01mm
ANGLES = ±5°
UNLESS STATED

THIS DRAWING AND ANY
INFORMATION OR DESCRIPTIVE
MATTER SET OUT HEREON ARE
CONFIDENTIAL AND COPYRIGHT
PROPERTY OF THE HARWIN GROUP
AND MUST NOT BE DISCLOSED,
LOANED, COPIED OR USED FOR
MANUFACTURING, TENDERING OR FOR
ANY OTHER PURPOSE WITHOUT THEIR
WRITTEN PERMISSION.

MATERIAL & FINISH:

SEE SHEET 10

TITLE:
M80 J-TEK DOUBLE-ENDED
CABLE ASSEMBLY

DRAWING NUMBER:
M80-XXXXXXXX-XXXXXX

SHT
17
OF
18

RTP	2	14.04.25	35978
NAME	ISS.	DATE	CN/CO
APPROVED:		R.PORTLOCK	
CHECKED:		R.ALEXANDER	
DRAWN:		R.PORTLOCK	

Customer Information Sheet

IF IN DOUBT - ASK

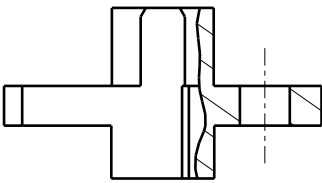
©

NOT TO SCALE

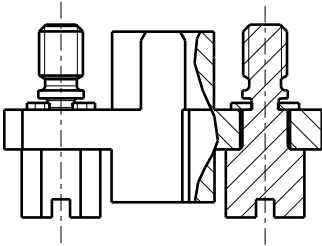
THIRD ANGLE PROJECTION

ALL DIMENSIONS IN mm

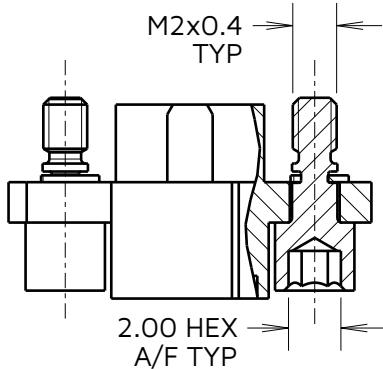
FEMALE FIXING STYLES



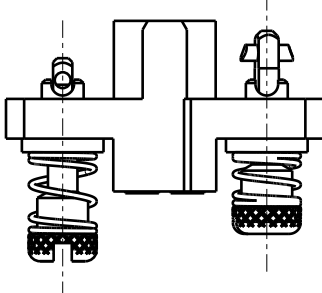
F0 = NO HARDWARE



F1 = HEX SLOTTED JACKSCREW

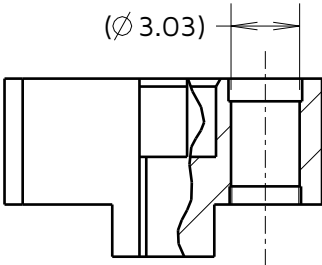


F2 = HEX SOCKET JACKSCREW

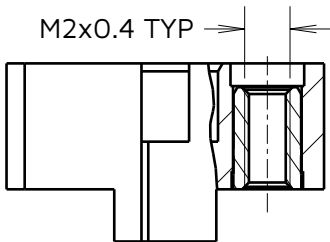


FC = 101LOK

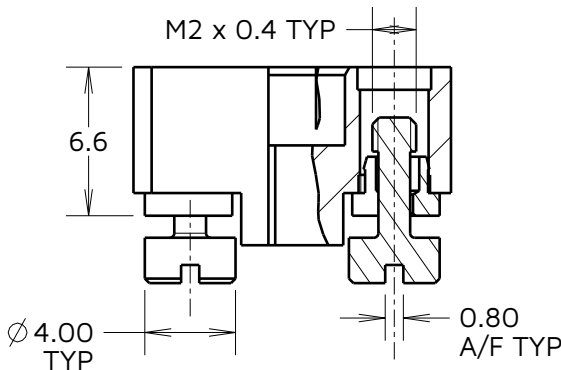
MALE FIXING STYLES



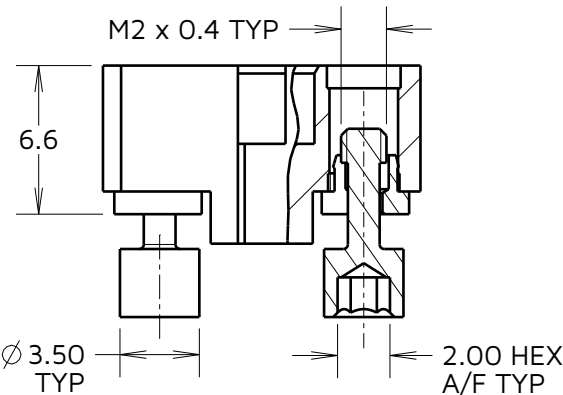
M0 = NO HARDWARE



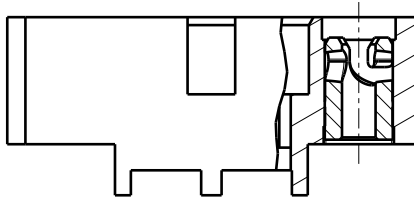
M1 = JACKSCREW NUT



MA = REVERSE FIX SLOTTED JACKSCREW

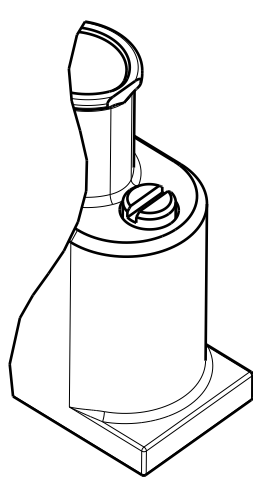


MB = REVERSE FIX HEX JACKSCREW

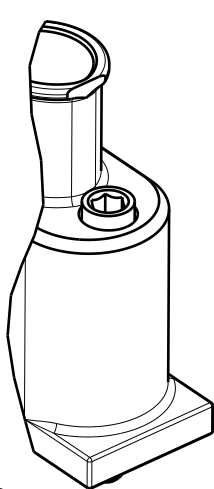
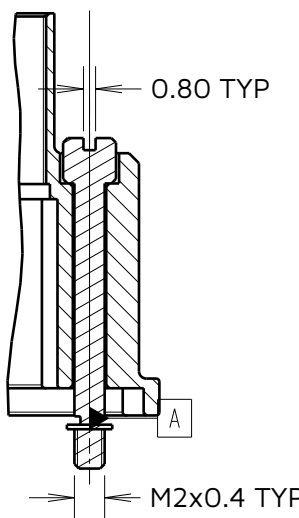


MC = 101LOK RETAINER

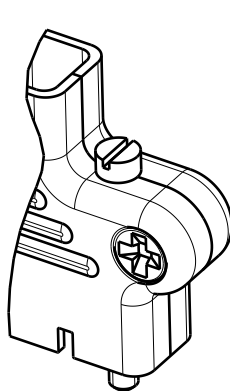
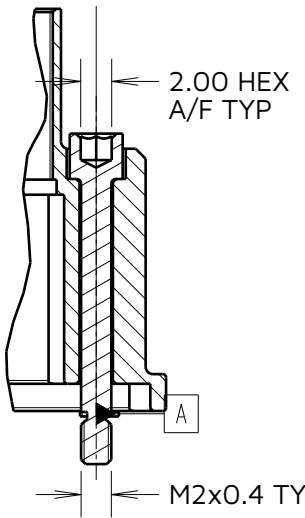
SHIELDED FIXING STYLES (FOR OPTIONS WITH WIRE STYLE '69' - '74' IN ORDER CODE)



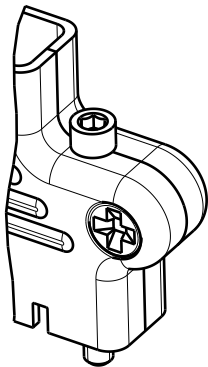
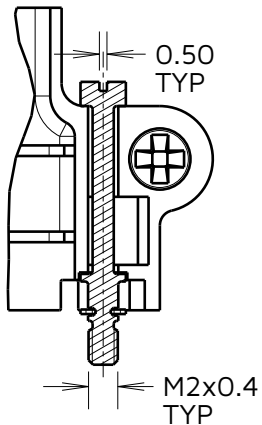
F1/MA = METAL SHIELDING SLOTTED JACKSCREW



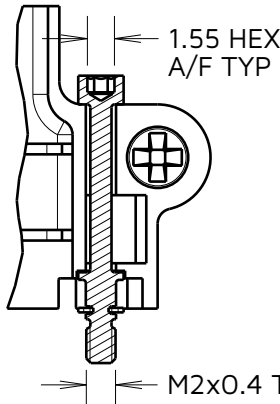
F2/MB = METAL SHIELDING HEX JACKSCREW



F1/MA = PLASTIC SHIELDING SLOTTED JACKSCREW



F2/MB = PLASTIC SHIELDING HEX SOCKET JACKSCREW



RTP	2	14.04.25	35978
NAME	ISS.	DATE	CN/CO
APPROVED: R.PORTLOCK			
CHECKED: R.ALEXANDER			
DRAWN: R.PORTLOCK			

HARWIN

www.harwin.com

TOLERANCES
X. = ±1mm
X.X = ±0.50mm
X.XX = ±0.20mm
X.XXX = ±0.01mm
ANGLES = ±5°
UNLESS STATED

THIS DRAWING AND ANY INFORMATION OR DESCRIPTIVE MATTER SET OUT HEREON ARE CONFIDENTIAL AND COPYRIGHT PROPERTY OF THE HARWIN GROUP AND MUST NOT BE DISCLOSED, LOANED, COPIED OR USED FOR MANUFACTURING, TENDERING OR FOR ANY OTHER PURPOSE WITHOUT THEIR WRITTEN PERMISSION.

MATERIAL & FINISH:

SEE SHEET 10

TITLE:
M80 J-TEK DOUBLE-ENDED CABLE ASSEMBLY

DRAWING NUMBER:
M80-XXXXXXXX-XXXXXX

SHT
18
OF
18