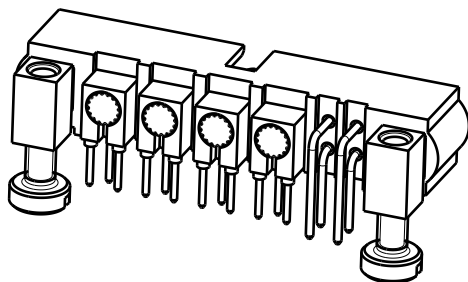
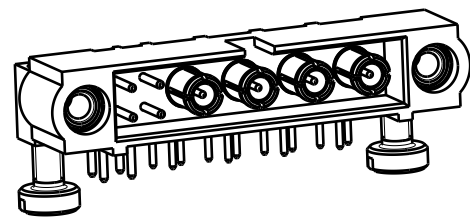


TABLE 1: BILL OF MATERIALS

ITEM No.	PART No.	QTY	DESCRIPTION
1	M80-271-04-04-00	1	HOUSING
2	M80-0220005	2	LONG CONTACT 3.0mm-PC-TAIL
3	M80-0210005	2	SHORT CONTACT 3.0mm-PC-TAIL
4	M80-313	4	COAX MALE HORIZ 3.0mm-PC-TAIL
5	M80-2250000	2	BOARD MOUNT JACKSCREW
6	M80-2270000B	2	SCREW

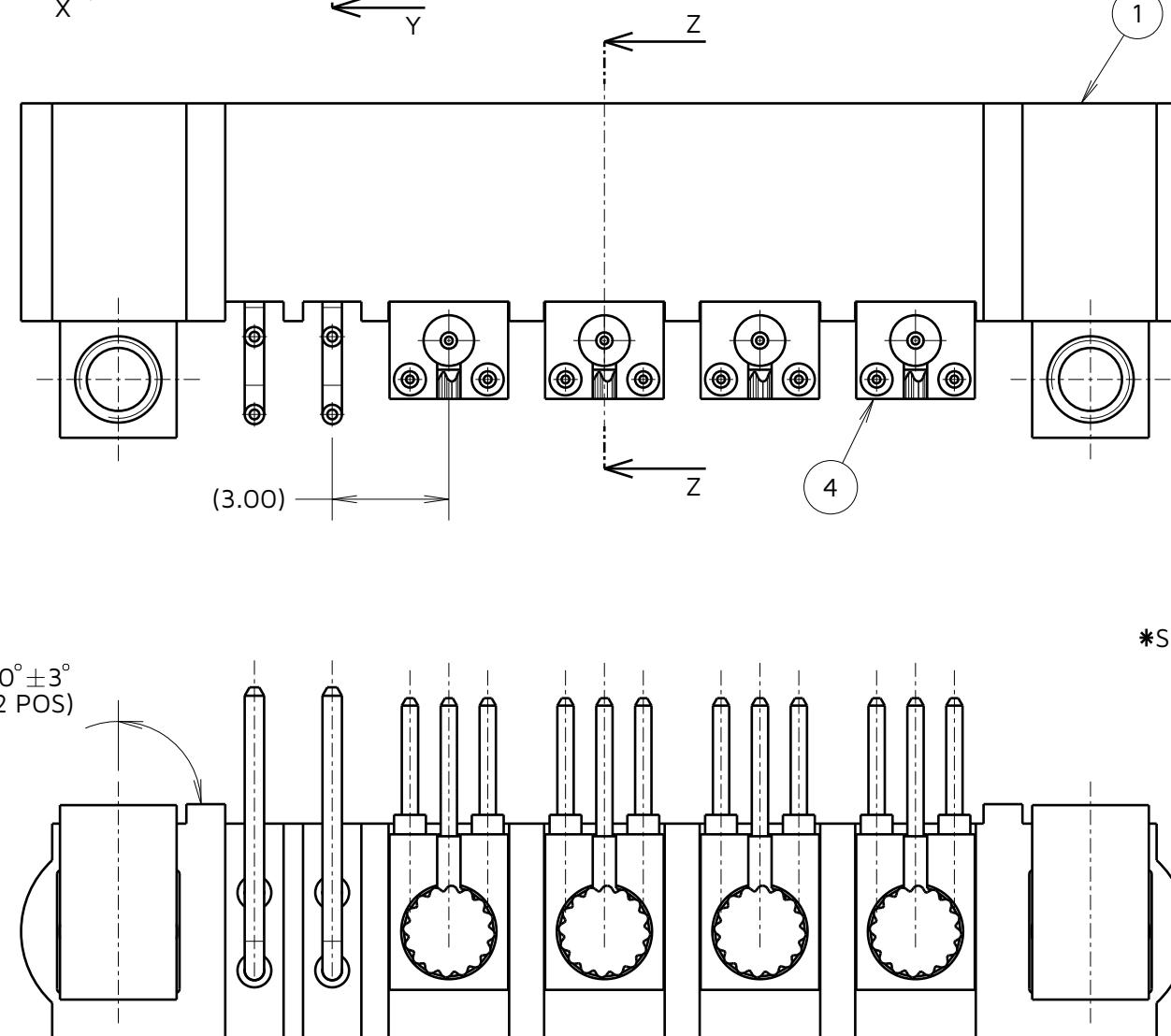
COMPLETE ASSEMBLY
SHOWN FOR ILLUSTRATION
ONLY



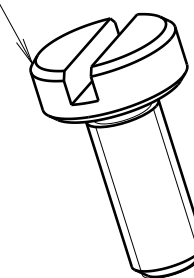
NOTES:

1. ALL DIMENSIONS AND NOTES MARKED * ARE CRITICAL AND MUST BE CHECKED.
- *2. THIS DIMENSION IS ONLY CRITICAL TO ENSURE CORRECT COMPONENT HAS BEEN ASSEMBLED
- *3. BOARD MOUNT JACKSCREWS ARE PUSHED TO DEPTH.
- *4. M80-2270000 SCREWS ARE SUPPLIED LOOSE.
- *5. COAX CONTACTS ARE PUSHED TO DEPTH.
- *6. THIS DIMENSION IS ONLY CRITICAL TO ENSURE CORRECT COMPONENT HAS BEEN ASSEMBLED.
- *7. FOR PACKING DETAILS: SEE ERP SYSTEM.
8. FOR MECHANICAL/ELECTRICAL REQUIREMENTS, SEE COMPONENT SPECIFICATION C005XX (LATEST ISSUE).

3 *90° ± 3°
(2 POS)



*SEE NOTE 4 6



HARWIN

www.harwin.com

TOLERANCES

X. = ±1mm
X.X = ±0.50mm
X.XX = ±0.10mm
X.XXX = ±0.01mm
ANGLES = ±5°
UNLESS STATED

ALL PARTS MUST
ADHERE TO WS-71
OR MAX SURFACE
ROUGHNESS
OF 3.2Ra
UNLESS STATED

THIS DRAWING AND ANY
INFORMATION OR DESCRIPTIVE
MATTER SET OUT HEREON ARE
CONFIDENTIAL AND COPYRIGHT
PROPERTY OF THE HARWIN GROUP
AND MUST NOT BE DISCLOSED,
LOANED, COPIED OR USED FOR
MANUFACTURING, TENDERING OR FOR
ANY OTHER PURPOSE WITHOUT THEIR
WRITTEN PERMISSION.

MATERIAL:

SEE TABLE 1

FINISH:

SEE TABLE 1

S/AREA:

mm²

TITLE: JACKSCREW DATAMATE
MIXED TECHNOLOGY
PC TAIL MALE ASSEMBLY

DRAWING NUMBER:

M80-5L10405M5-04-313-00-000

SHT

1 OF 2

MJ	3	28.11.24	34803
MR	2	06.11.19	22160
MR	1	09.09.19	22068
NAME	ISS.	DATE	CN/CO
APPROVED:		M. JELLEY	
CHECKED:		R. ALEXANDER	
DRAWN:		M.RUDKIN	
PART WEIGHT:		MAT'L USAGE:	
		9	