

Customer Information Sheet

IF IN DOUBT - ASK

©

NOT TO SCALE

THIRD ANGLE PROJECTION

ALL DIMENSIONS IN mm

TABLE 1: CONFIGURATIONS & BILL OF MATERIALS

ORDER CODE CONFIGURATION										BOM ITEM No.								
G125-XXXXXXXX-XX-XXXXLXXX										1	2	3	4	5				
										CONNECTOR WITH HARDWARE (SEE ORDER CODE FOR TOTAL No. OF CONTACTS)	PTFE WIRE (SIGNAL)	PTFE WIRE (POWER)	CONNECTOR SIGNAL CONTACTS (SEE ORDER CODE FOR QTY.)	CONNECTOR POWER CONTACTS (SEE ORDER CODE FOR QTY.)				
G125	FC FD	1	2	08	05 68 98 99	1	2 3 5	03	-XXXX	L	BLANK A S	XX	G125-22496F1-XX-XX-00 G125-22496F2-XX-XX-00 G125-22496F3-XX-XX-00 G125-22496F5-XX-XX-00 (SEE TABLE 2)	WHITE/BLACK/ RED WIRE (SEE C049XX) MULTI-COLOURED WIRE (SEE TABLE 3) TWISTED PAIRS 2 TPI: WHITE & RED (SEE C049XX) 3 TPI: WHITE & GREEN (SEE C049XX)	WHITE/BLACK/ RED WIRE (SEE C049XX)	FEMALE SIGNAL		FEMALE POWER
				04				26AWG: G125-0010005								MALE SIGNAL	18AWG: G125-0500005	
				04				28AWG: G125-0020005										
				24														
				16														
	08		MALE SIGNAL		MALE POWER													
	08	26AWG: G125-1010005	MALE SIGNAL	18AWG: G125-1500005														
	04	28AWG: G125-1020005																
	04																	
	24																	
16																		
08																		

TABLE 2: AVAILABLE VARIANTS

FEMALE CONNECTOR PART No.	MALE CONNECTOR PART No.	No. OF POWER CONTACTS	No. OF SIGNAL CONTACTS
G125-22496FX-02-04-00	G125-32496MX-02-04-00	02	04
G125-22496FX-04-04-00	G125-32496MX-04-04-00	04	04
G125-22496FX-03-08-00	G125-32496MX-03-08-00	03	08
G125-22496FX-02-24-00	G125-32496MX-02-24-00	02	24
G125-22496FX-04-16-00	G125-32496MX-04-16-00	04	16
G125-22496FX-06-08-00	G125-32496MX-06-08-00	06	08

NOTES:

- FOR COMPLETE SPECIFICATION, INCLUDING WIRE TYPE AND GAUGE SEE COMPONENT SPECIFICATIONS C125XX & C049XX (LATEST ISSUE)
- FOR POTTING COMPOUND AND WIRE TYPE, SEE C049XX COMPONENT SPECIFICATION (LATEST ISSUE)
- SEE SHEET 7 FOR ASSEMBLIES WITH STANDARD WIRING CONFIGURATIONS.
- SEE SHEET 8 FOR ASSEMBLIES WITH TWISTED PAIR WIRING CONFIGURATIONS.
- SEE SHEET 9 FOR HARDWARE FIXING INFORMATION.
- FOR ALL HOUSING DIMENSIONS, SEE RESPECTIVE DRAWING FOR BOM ITEM 1
- TWISTED PAIRS ARE ONLY POSSIBLE FOR SIGNAL CABLES. POWER CABLES ARE OFFERED IN THE STANDARD WIRING CONFIGURATION ONLY.
- "FD"/"MD" AND "68" COMBINATION (TWISTED PAIRS AND MULTI-COLOURED SIGNAL WIRE) NOT AVAILABLE TO ORDER.

ORDER CODE:

G125-XXXXXXXX-XX-XXXXLXXX

CONNECTOR:
F = FEMALE
M = MALE
WIRING STYLE:
C = STANDARD WIRE
D = TWISTED PAIRS

WIRE GAUGE:
26AWG = 1
28AWG = 2

TOTAL No. OF SIGNAL CONTACTS:
SEE TABLE 1

WIRING:
05 = WHITE
68 = MULTI-COLOURED
98 = BLACK
99 = RED

CONNECTOR FIXING STYLE:
FEMALE/MALE:
1,2,3,5

LENGTH OF POWER CABLE PRE-STRIP:
X = 1-9mm

LENGTH OF SIGNAL CABLE PRE-STRIP:
X = 1-9mm

WIRE END:
BLANK = CUT END
A = PRE-STRIPPED TO IS-37 & IS-44
S = PRE-STRIPPED CUSTOM LENGTH

DIM 'A' LENGTH:
0060 = 60mm MIN
9999 = 9999mm MAX

TOTAL No. OF POWER CONTACTS:
SEE TABLE 1

RTP	2	21.09.23	33059
NAME	ISS.	DATE	CN/CO
APPROVED:		R.PORTLOCK	
CHECKED:		A.BOXALL	
DRAWN:		A.BOXALL	
ASSEMBLY DRG:			

HARWIN

www.harwin.com

TOLERANCES
X. = ±1mm
X.X = ±0.50mm
X.XX = ±0.20mm
X.XXX = ±0.01mm
ANGLES = ±5°
UNLESS STATED

THIS DRAWING AND ANY INFORMATION OR DESCRIPTIVE MATTER SET OUT HEREON ARE CONFIDENTIAL AND COPYRIGHT PROPERTY OF THE HARWIN GROUP AND MUST NOT BE DISCLOSED, LOANED, COPIED OR USED FOR MANUFACTURING, TENDERING OR FOR ANY OTHER PURPOSE WITHOUT THEIR WRITTEN PERMISSION.

MATERIAL:
SEE ABOVE

TITLE:
GECKO-MT SINGLE ENDED CABLE ASSEMBLY

DRAWING NUMBER:
G125-XXXXXXXX-XX-XXXXLXXX

SHT
6 OF 9

Customer Information Sheet

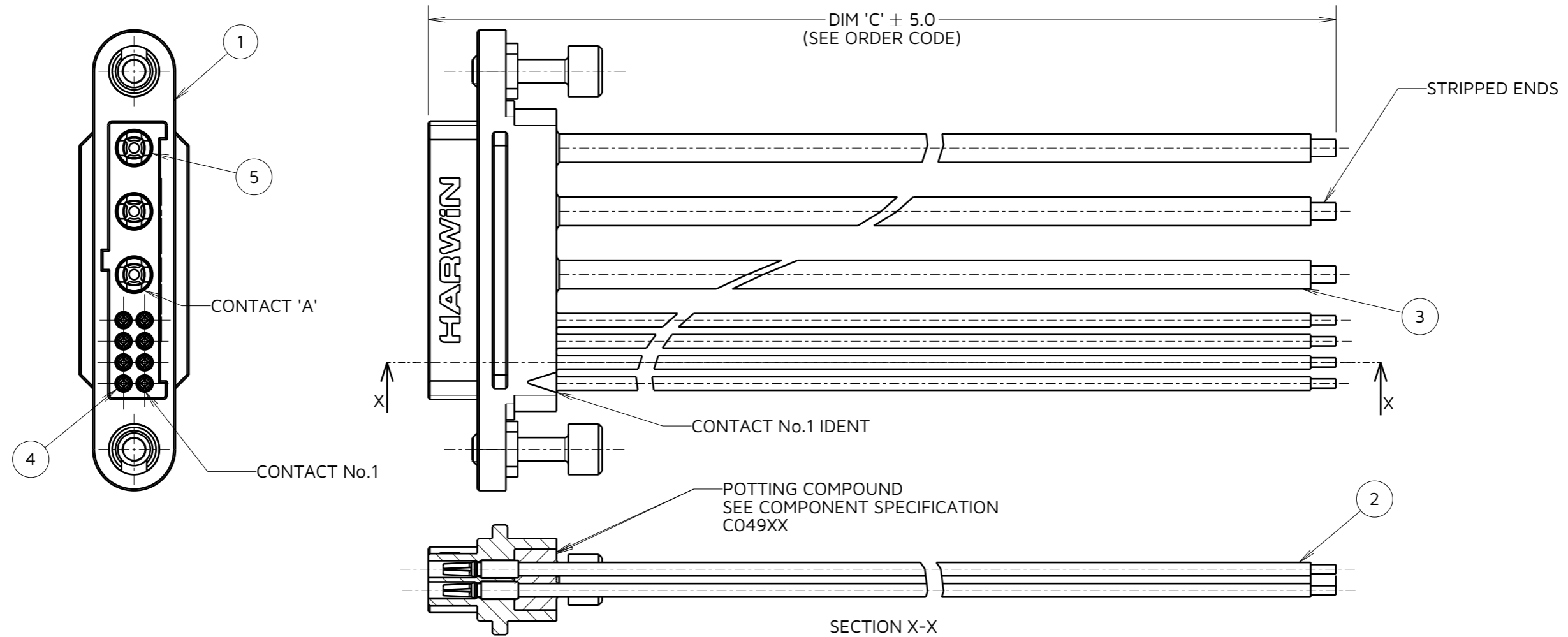
IF IN DOUBT - ASK

©

NOT TO SCALE

THIRD ANGLE PROJECTION

ALL DIMENSIONS IN mm



EXAMPLE SHOWN: FEMALE STANDARD WIRING
G125-FC108051-03-0150LA

TABLE 3: SIGNAL WIRE COLOUR (FOR '68' FINISH ONLY)

CONTACT No.	SIGNAL WIRE COLOUR
1	BLACK
2	BROWN
3	RED
4	ORANGE
5	YELLOW
6	GREEN
7	BLUE
8	VIOLET
9	GREY
10	WHITE

WIRE COLOURS REPEAT IN ABOVE ORDER FOR CONNECTOR ASSEMBLIES OVER 10 CONTACTS

ORDER CODE:

G125-XXXXXXXX-XX-XXXXLXXX

CONNECTOR:

F = FEMALE
M = MALE

WIRING STYLE:
C = STANDARD WIRE
D = TWISTED PAIRS

WIRE GAUGE:

26AWG = 1
28AWG = 2

TOTAL No. OF SIGNAL CONTACTS:
SEE TABLE 1

WIRING:

05 = WHITE
68 = MULTI-COLOURED
98 = BLACK
99 = RED

CONNECTOR FIXING STYLE:
FEMALE/MALE:
1,2,3,5

LENGTH OF POWER CABLE PRE-STRIP:
X = 1-9mm

LENGTH OF SIGNAL CABLE PRE-STRIP:
X = 1-9mm

WIRE END:

BLANK = CUT END
A = PRE-STRIPPED TO IS-37 & IS-44
S = PRE-STRIPPED CUSTOM LENGTH

DIM 'A' LENGTH:
0060 = 60mm MIN
9999 = 9999mm MAX

TOTAL No. OF POWER CONTACTS:
SEE TABLE 1

RTP	2	21.09.23	33059
NAME	ISS.	DATE	CN/CO
APPROVED: R.PORTLOCK			
CHECKED:		A.BOXALL	
DRAWN:		A.BOXALL	
ASSEMBLY DRG:			

HARWIN

www.harwin.com

TOLERANCES
X. = ±1mm
X.X = ±0.50mm
X.XX = ±0.20mm
X.XXX = ±0.01mm
ANGLES = ±5°
UNLESS STATED

THIS DRAWING AND ANY INFORMATION OR DESCRIPTIVE MATTER SET OUT HEREON ARE CONFIDENTIAL AND COPYRIGHT PROPERTY OF THE HARWIN GROUP AND MUST NOT BE DISCLOSED, LOANED, COPIED OR USED FOR MANUFACTURING, TENDERING OR FOR ANY OTHER PURPOSE WITHOUT THEIR WRITTEN PERMISSION.

MATERIAL:

SEE SHEET 6

TITLE:

GECKO-MT SINGLE ENDED CABLE ASSEMBLY

DRAWING NUMBER:

G125-XXXXXXXX-XX-XXXXLXXX

SHT
7
OF
9

Customer Information Sheet

IF IN DOUBT - ASK

©

NOT TO SCALE

THIRD ANGLE PROJECTION

ALL DIMENSIONS IN mm

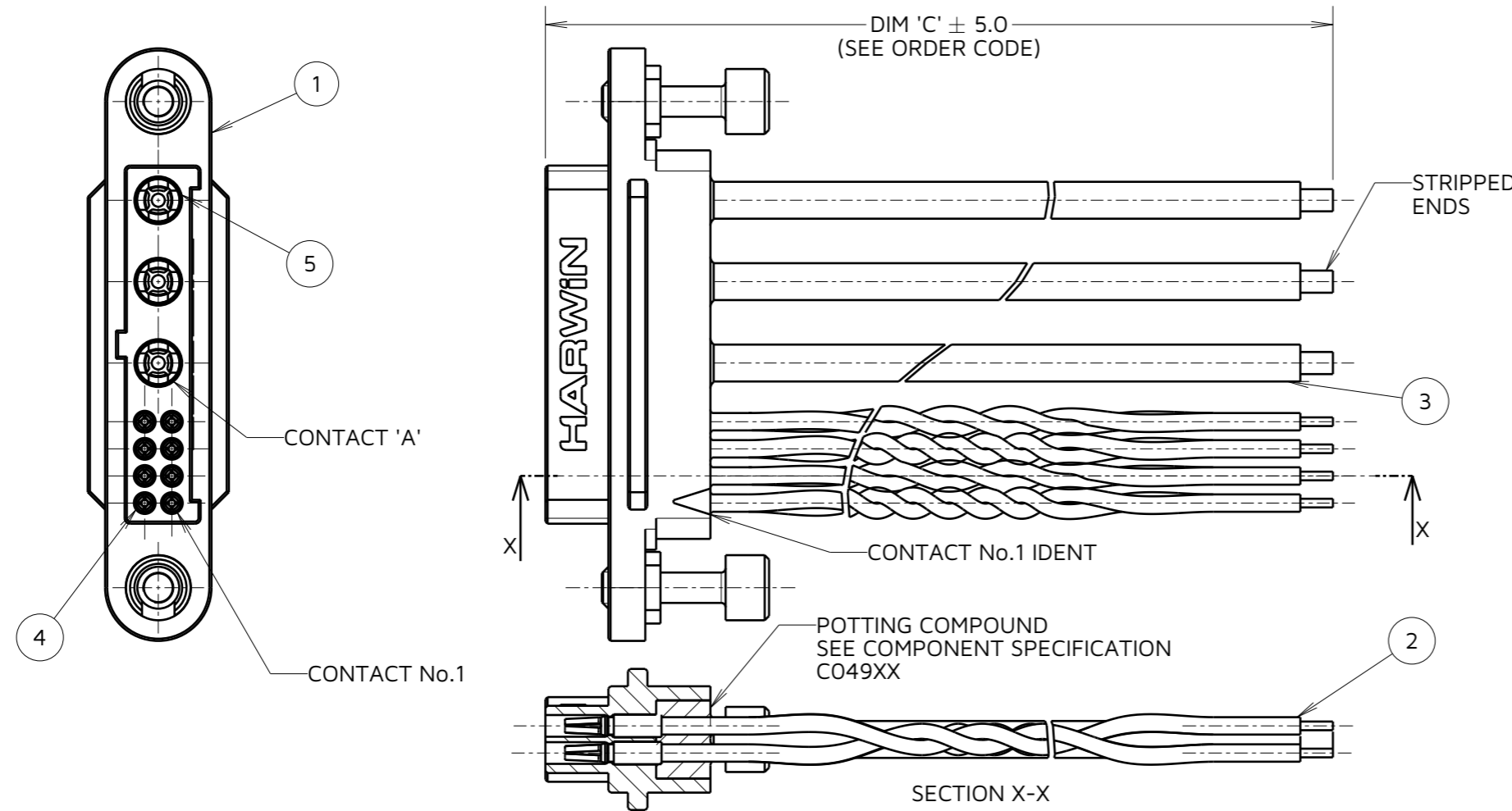


TABLE 4: TWISTED PAIR CABLE CONFIGURATIONS			
WIRING FOR EXAMPLE PART No. G125-FD10805F1-03-150L			
TWISTED PAIR No.	CONNECTOR PIN No.	TURNS PER INCH	WIRE COLOUR
1	1	3	WHITE & GREEN
	5		
2	2	2	WHITE & RED
	6		
3	3	3	WHITE & GREEN
	7		
4	4	2	WHITE & RED
	8		

FOR CONNECTORS WITH MORE THAN 8 SIGNAL CONTACTS, CONTINUE TWIST & CABLE PIN OUT CONVENTION IN THE SAME PATTERN. (IE. TWISTED PAIR BETWEEN CONTACT X & CONTACT X)

SEE BILL OF MATERIALS TABLE ON SHEET 6 FOR TWISTED PAIR PART NUMBERS.

EXAMPLE SHOWN: FEMALE
TWISTED PAIR
G125-FD108051-03-0150LA

ORDER CODE:

G125-XXXXXXXX-XX-XXXXLXXX

CONNECTOR: F = FEMALE M = MALE	LENGTH OF POWER CABLE PRE-STRIP: X = 1-9mm
WIRING STYLE: C = STANDARD WIRE D = TWISTED PAIRS	LENGTH OF SIGNAL CABLE PRE-STRIP: X = 1-9mm
WIRE GAUGE: 26AWG = 1 28AWG = 2	WIRE END: BLANK = CUT END A = PRE-STRIPPED TO IS-37 & IS-44 S = PRE-STRIPPED CUSTOM LENGTH
TOTAL No. OF SIGNAL CONTACTS: SEE TABLE 1	DIM 'A' LENGTH: 0060 = 60mm MIN 9999 = 9999mm MAX
WIRING: 05 = WHITE 68 = MULTI-COLOURED 98 = BLACK 99 = RED	TOTAL No. OF POWER CONTACTS: SEE TABLE 1
	CONNECTOR FIXING STYLE: FEMALE/MALE: 1,2,3,5

RTP	2	21.09.23	33059
NAME	ISS.	DATE	CN/CO
APPROVED: R.PORTLOCK			
CHECKED: A.BOXALL			
DRAWN: A.BOXALL			
ASSEMBLY DRG:			



TOLERANCES
X. = ±1mm
X.X = ±0.50mm
X.XX = ±0.20mm
X.XXX = ±0.01mm
ANGLES = ±5°
UNLESS STATED

THIS DRAWING AND ANY INFORMATION OR DESCRIPTIVE MATTER SET OUT HEREON ARE CONFIDENTIAL AND COPYRIGHT PROPERTY OF THE HARWIN GROUP AND MUST NOT BE DISCLOSED, LOANED, COPIED OR USED FOR MANUFACTURING, TENDERING OR FOR ANY OTHER PURPOSE WITHOUT THEIR WRITTEN PERMISSION.

MATERIAL:
SEE SHEET 6

TITLE:
GECKO-MT SINGLE ENDED CABLE ASSEMBLY
DRAWING NUMBER:
G125-XXXXXXXX-XX-XXXXLXXX
SHT 8 OF 9

Customer Information Sheet

IF IN DOUBT - ASK

©

NOT TO SCALE

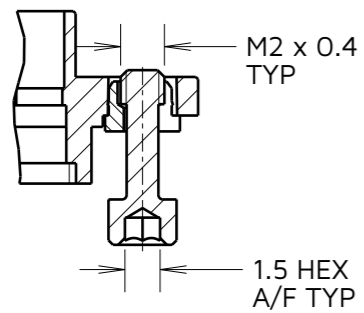
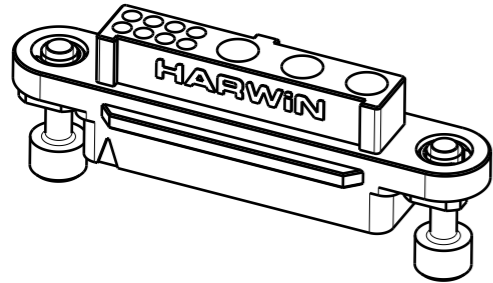
THIRD ANGLE PROJECTION

ALL DIMENSIONS IN mm

FIXING STYLE IDENTIFICATION

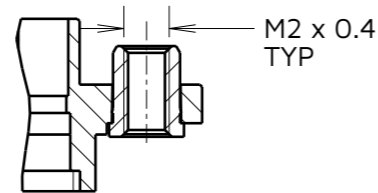
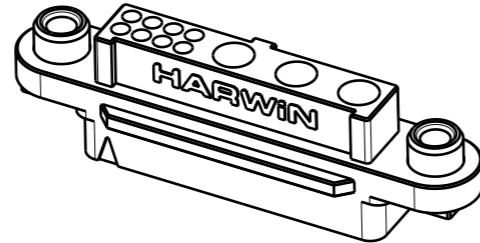
F1

EXAMPLE: G125-22496F1-03-08-00



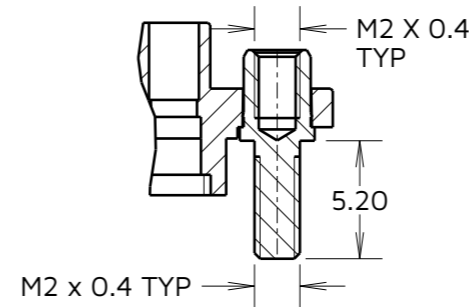
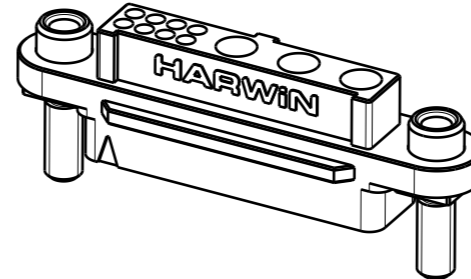
F2

EXAMPLE: G125-22496F2-03-08-00



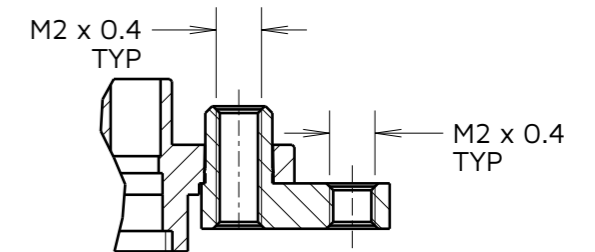
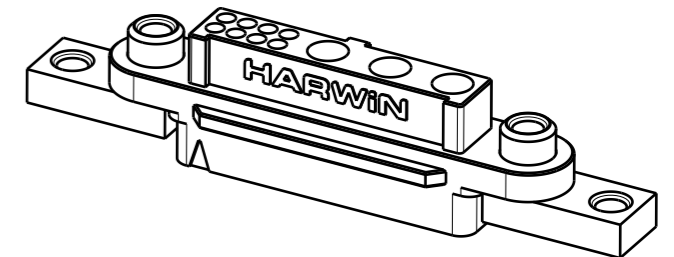
F3

EXAMPLE: G125-22496F3-03-08-00



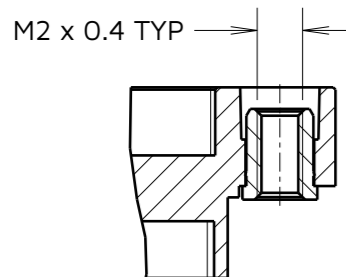
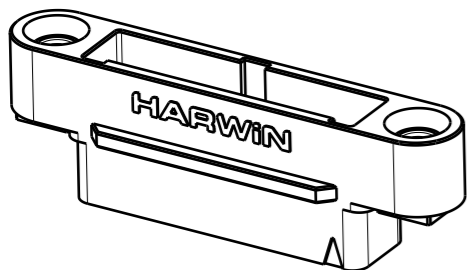
F5

EXAMPLE: G125-22496F5-03-08-00



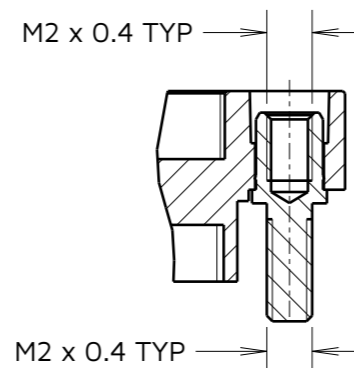
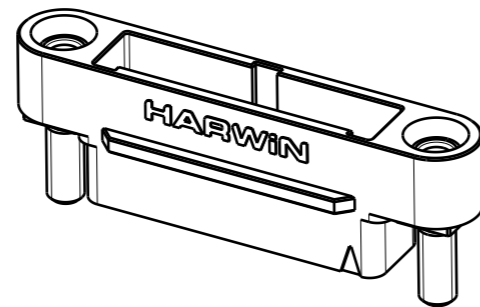
M1

EXAMPLE: G125-32496M1-03-08-00



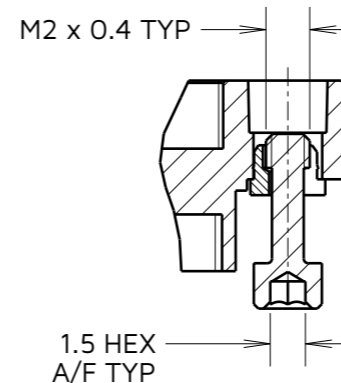
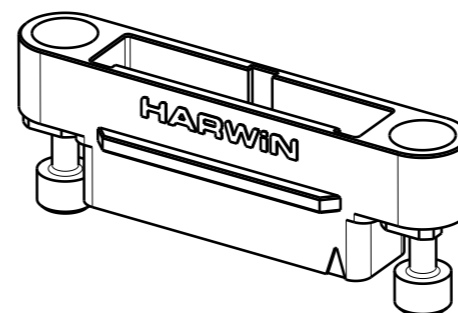
M2

EXAMPLE: G125-32496M2-03-08-00



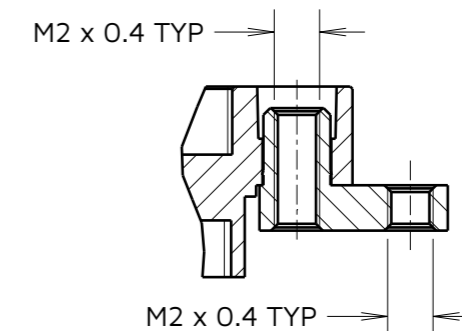
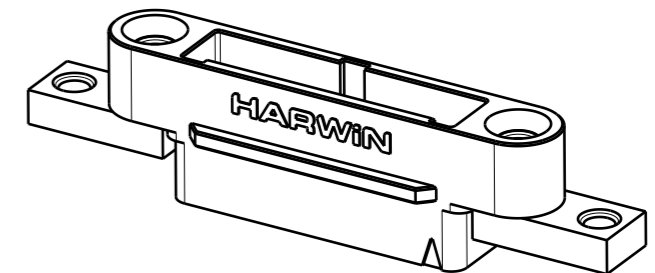
M3

EXAMPLE: G125-32496M3-03-08-00



M5

EXAMPLE: G125-32496M5-03-08-00



NOTES:
9. SEE BILL OF MATERIALS TABLE ON SHEET 6 AND ORDER CODE FOR FIXING IDENTIFICATION.

HARWIN

www.harwin.com

TOLERANCES
X. = ±1mm
X.X = ±0.50mm
X.XX = ±0.20mm
X.XXX = ±0.01mm
ANGLES = ±5°
UNLESS STATED

THIS DRAWING AND ANY INFORMATION OR DESCRIPTIVE MATTER SET OUT HEREON ARE CONFIDENTIAL AND COPYRIGHT PROPERTY OF THE HARWIN GROUP AND MUST NOT BE DISCLOSED, LOANED, COPIED OR USED FOR MANUFACTURING, TENDERING OR FOR ANY OTHER PURPOSE WITHOUT THEIR WRITTEN PERMISSION.

MATERIAL:
SEE SHEET 6

TITLE:
GECKO-MT SINGLE ENDED CABLE ASSEMBLY

DRAWING NUMBER:
G125-XXXXXXXX-XX-XXXXLXXX

SHT
9 OF 9

RTP	2	21.09.23	33059
NAME	ISS.	DATE	CN/CO
APPROVED: R.PORTLOCK			
CHECKED: A.BOXALL			
DRAWN: A.BOXALL			
ASSEMBLY DRG:			