

# Customer Information Sheet

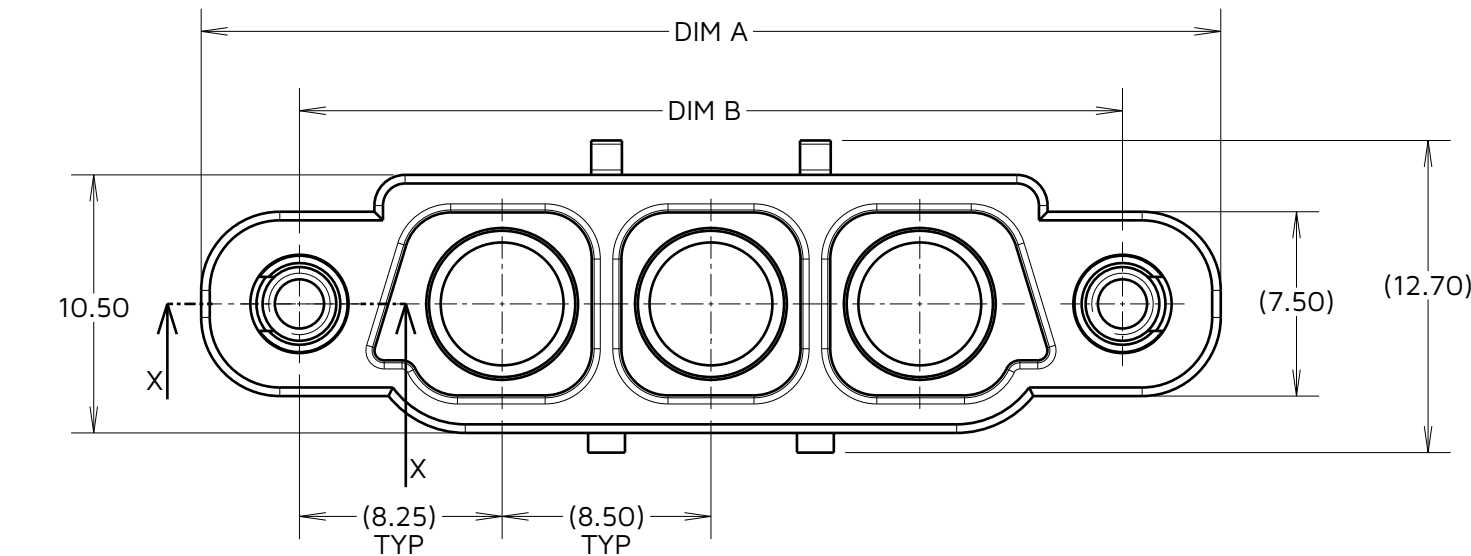
IF IN DOUBT - ASK

©

NOT TO SCALE

THIRD ANGLE PROJECTION

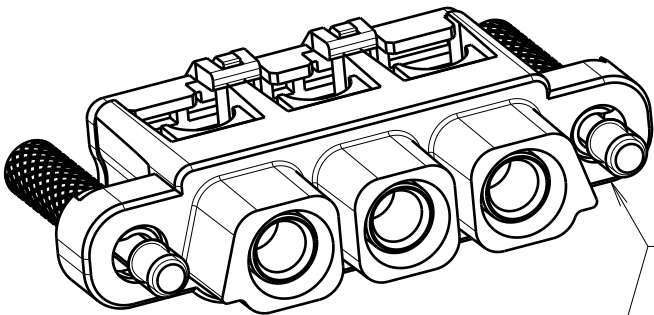
ALL DIMENSIONS IN mm



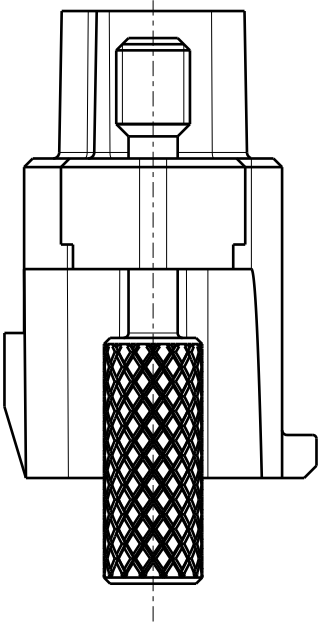
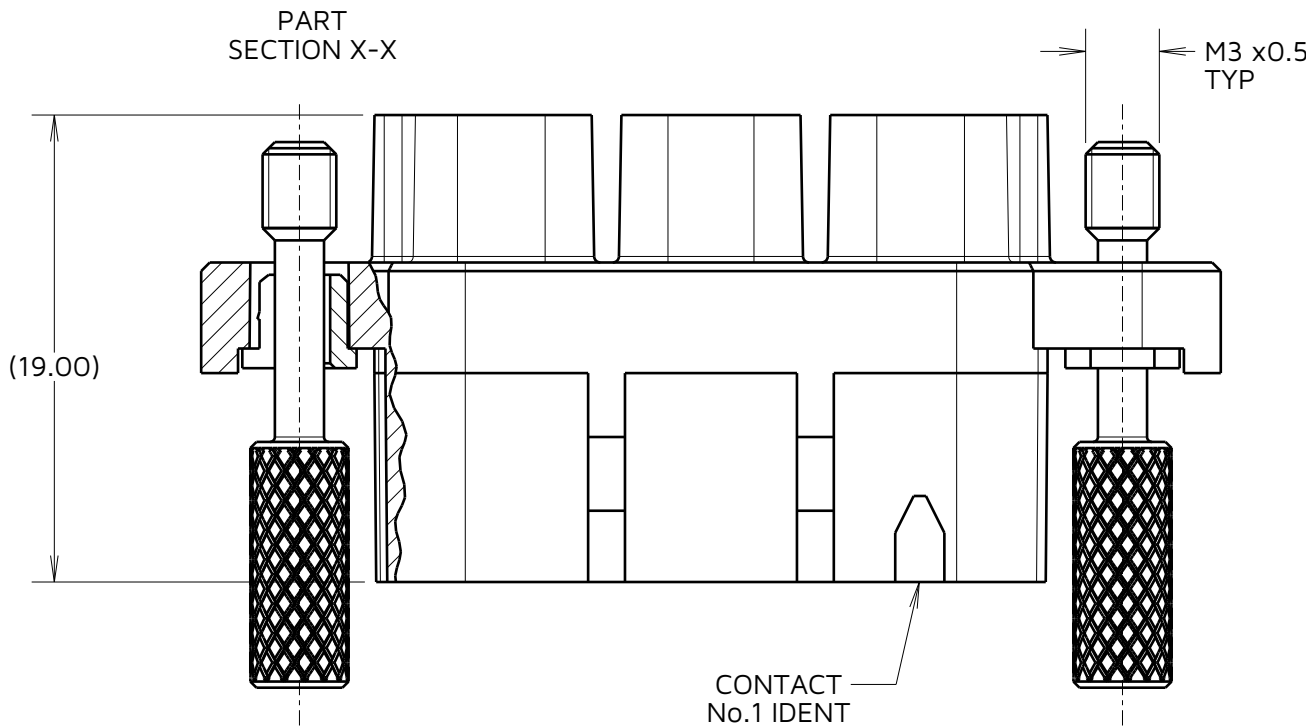
ORDER CODE:

KA1-202XX98F1

TOTAL No. OF CONTACTS  
02, 03, 04




FULL CONNECTOR ASSEMBLY  
FOR ILLUSTRATION ONLY  
KA1-510XX98 CAP & KA1-0500005  
CONTACT SUPPLIED SEPERATELY



- NOTES:
1. PACK SIZE: 5 PER BAG
  2. FOR MATERIALS, FINISH AND SPECIFICATION REQUIREMENTS, SEE KA1 SERIES COMPONENT SPECIFICATION C052XX (LATEST ISSUE).

DIMENSION	CALCULATION
A	(TOTAL No. OF CONTACTS - 1) x 8.5 + 24.5
B	((TOTAL No. OF CONTACTS -1) x 8.5 + 16.50)
EXAMPLE: CONNECTOR WITH 4 CONTACTS, KA1-20298F1 DIM 'A' = 50mm, DIM 'B' = 42mm	

AY	1	13.11.23	33327
NAME	ISS.	DATE	CN/CO
APPROVED:		A.YEOMANS	
CHECKED:		F.CHRISPINE	
DRAWN:		M.RUDKIN	
ASSEMBLY DRG:		N/A N/A	

 www.harwin.com	TOLERANCES X. = ±1mm X.X = ±0.50mm X.XX = ±0.20mm X.XXX = ±0.01mm ANGLES = ±5° UNLESS STATED	THIS DRAWING AND ANY INFORMATION OR DESCRIPTIVE MATTER SET OUT HEREON ARE CONFIDENTIAL AND COPYRIGHT PROPERTY OF THE HARWIN GROUP AND MUST NOT BE DISCLOSED, LOANED, COPIED OR USED FOR MANUFACTURING, TENDERING OR FOR ANY OTHER PURPOSE WITHOUT THEIR WRITTEN PERMISSION.	MATERIAL:  SEE ABOVE	TITLE: KONA SERIES - FEMALE CABLE CONNECTOR	
				DRAWING NUMBER: KA1-202XX98F1	SHT 3 OF 3