

Customer Information Sheet

IF IN DOUBT - ASK



NOT TO SCALE

THIRD ANGLE PROJECTION

ALL DIMENSIONS IN mm

TABLE 1: CONFIGURATIONS & BILL OF MATERIALS

ORDER CODE CONFIGURATIONS											BOM ITEM No.					
											1	2	3	4	5	6
G125-XXX08XXXX-XXXX-XXXXLXX											CONNECTOR (SEE ORDER CODE FOR TOTAL No. OF CONTACTS)	CONNECTOR SIGNAL CONTACT	CONNECTOR POWER CONTACT (SEE ORDER CODE FOR QTY.)	SIGNAL WIRE (SEE C049XX OR USE PART NUMBERS BELOW)	POWER WIRE (SEE C049XX OR USE PART NUMBERS BELOW)	HEATSHRINK
G125	-										G125-22496F1-01-08-01 G125-22496F1-02-08-02 G125-22496F2-01-08-01 G125-22496F2-02-08-02 G125-22496F3-01-08-01 G125-22496F3-02-08-02 G125-22496F5-01-08-01 G125-22496F5-02-08-02	FEMALE SIGNAL 26AWG: G125-0010005 x8 28AWG: G125-0020005 x8	FEMALE POWER 18AWG: G125-0500005	SIGNAL WIRE STANDARD RED/WHITE/BLACK : 26AWG & 28AWG OR MULTI-COLOURED (SEE TABLE 2) TWISTED PAIR 2TPI: 26AWG & 28AWG WHITE & RED 3TPI: 26AWG & 28AWG WHITE & GREEN (SEE TABLE 3 ON SHEET 8)	POWER WIRE 18AWG SEE C049XX	FOR TWISTED PAIR CABLE ASSEMBLIES ONLY (SEE NOTE 1)
		FC FD					F1 F2 F3 F5	1B1B 2B2B			G125-32496M1-01-08-01 G125-32496M1-02-08-02 G125-32496M2-01-08-01 G125-32496M2-02-08-02 G125-32496M3-01-08-01 G125-32496M3-02-08-02 G125-32496M5-01-08-01 G125-32496M5-02-08-02	MALE SIGNAL 26AWG: G125-1010005 x8 28AWG: G125-1020005 x8	MALE POWER 18AWG: G125-1500005			
		MC MD			05 98 99 68		M1 M2 M3 M5	1D1D 2D2D		XXXX	L	BLANK A S	X			

ORDER CODE:

G125-XXX08XXXX-XXXX-XXXXLXX

CONNECTOR:

F = FEMALE

M = MALE

WIRING STYLE:

C = STANDARD WIRE

D = TWISTED PAIR

SIGNAL WIRE GAUGE:

1 = 26AWG

2 = 28AWG

WIRE COLOUR:

05 = WHITE

98 = BLACK

99 = RED

68 = MULTI-COLOURED

CONNECTOR FIXING STYLE:

F1/F2/F3/F5/M1/M2/M3/M5

LENGTH OF CABLE

PRE-STRIP (DIM 'B'):

X = 1-9mm

WIRE END:

BLANK = CUT END (SEE NOTE 6)

A = PRE-STRIPPED TO IS-37 & IS-44

(SEE NOTE 7)

S = PRE-STRIPPED CUSTOM LENGTH

DIM 'A' LENGTH:

0060 = 60mm MIN (SEE NOTE 5)

9999 = 9999mm MAX

POWER CONTACTS:

1B1B/1D1D = 2 POWER CONTACTS

2B2B/2D2D = 4 POWER CONTACTS

NOTES:

- FOR COMPLETE SPECIFICATION, INCLUDING WIRE TYPE, GAUGE AND POTTING COMPOUND SEE COMPONENT SPECIFICATIONS C125XX & C049XX (LATEST ISSUES).
- SEE SHEET 9 FOR HARDWARE FIXING INFORMATION.
- FOR ALL HOUSING DIMENSIONS, SEE RESPECTIVE DRAWINGS FOR BOM ITEM 1.
- CABLE ASSEMBLIES ARE PACKED INDIVIDUALLY IN BAGS.
- CUSTOM LENGTH CABLE ASSEMBLIES CAN BE PRODUCED FROM 60mm TO 9999mm. CABLE LENGTH LESS THAN 60mm IS POSSIBLE, BUT MUST BE ENQUIRED.
- AN ASSEMBLY WITH NO STRIPPED CABLE WITH HAVE THE LAST TWO CHARACTERS OF THE PART NUMBER BLANK (I.E. G125-XXX08XXXX-XXXX-XXXXL).
- IS-37 SIGNAL STRIP LENGTH IS 1.50-1.75mm. IS-44 POWER STRIP LENGTH IS 1.90-2.30mm.

RTP	4	11.03.25	35836
NAME	ISS.	DATE	CN/CO
APPROVED:	R.PORTLOCK		
CHECKED:	A.BOXALL		
DRAWN:	R.PORTLOCK		

HARWIN

www.harwin.com

TOLERANCES

X. = ±1mm

X.X = ±0.50mm

X.XX = ±0.20mm

X.XXX = ±0.01mm

ANGLES = ±5°

UNLESS STATED

THIS DRAWING AND ANY INFORMATION OR DESCRIPTIVE MATTER SET OUT HEREON ARE CONFIDENTIAL AND COPYRIGHT PROPERTY OF THE HARWIN GROUP AND MUST NOT BE DISCLOSED, LOANED, COPIED OR USED FOR MANUFACTURING, TENDERING OR FOR ANY OTHER PURPOSE WITHOUT THEIR WRITTEN PERMISSION.

MATERIAL & FINISH:

SEE ABOVE

TITLE:

GECKO-MT SINGLE-ENDED
CABLE ASSEMBLY

DRAWING NUMBER:

G125-XXX08XXXX-XXXX-XXXXLXX

SHT

6 OF 9

Customer Information Sheet

IF IN DOUBT - ASK

©

NOT TO SCALE

THIRD ANGLE PROJECTION

ALL DIMENSIONS IN mm

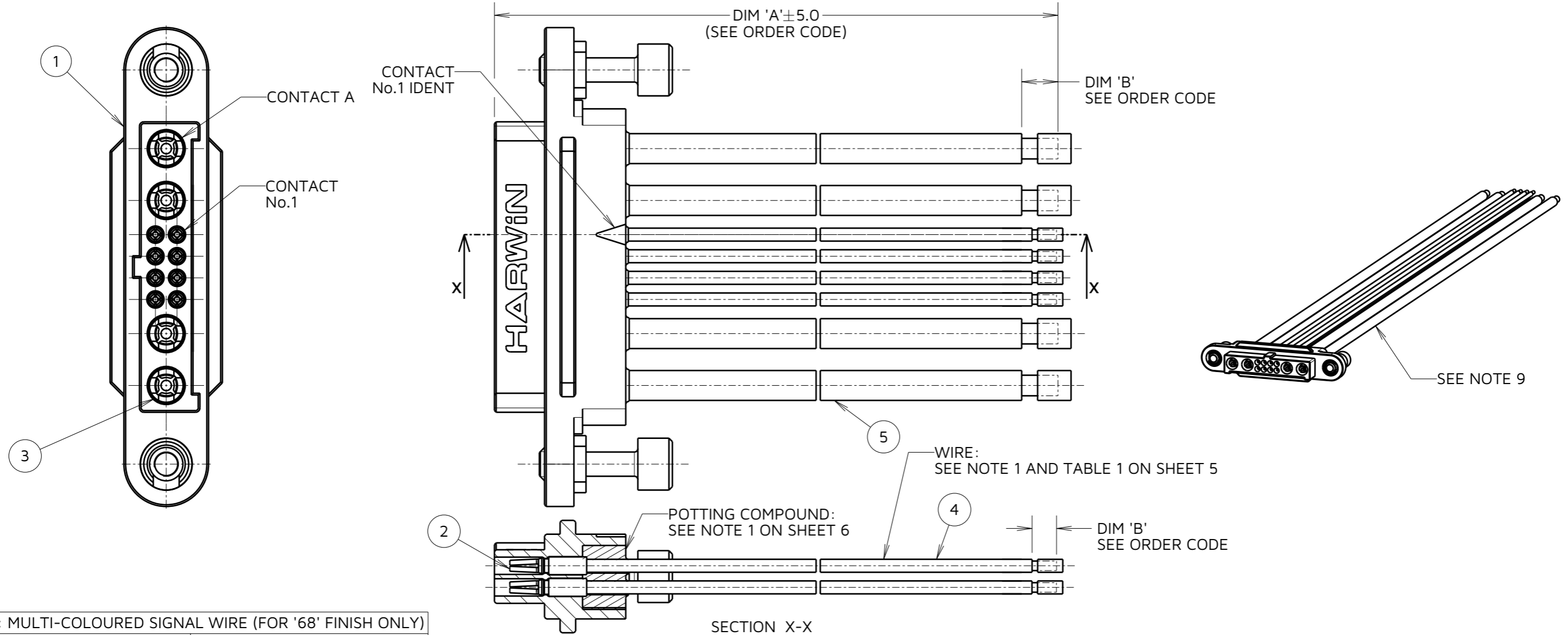


TABLE 2: MULTI-COLOURS SIGNAL WIRE (FOR '68' FINISH ONLY)

CONTACT No.	SIGNAL WIRE COLOUR
1	BLACK
2	BROWN
3	RED
4	ORANGE
5	YELLOW
6	GREEN
7	BLUE
8	VIOLET

WIRE COLOURS REPEAT IN ABOVE ORDER FOR CONNECTOR ASSEMBLIES OVER 10 CONTACTS

EXAMPLE SHOWN: FEMALE
SINGLE-ENDED STANDARD WIRING
G125-FC10868F1-2B2B-0150LS2

NOTES:
8. FOR POSSIBLE COMBINATIONS, SEE BOM TABLE ON SHEET 6.
9. ASSEMBLY SHOWN FOR ILLUSTRATIVE PURPOSES ONLY.
SEE ORDER CODE FOR PART NUMBER.

ORDER CODE:

G125-XXX08XXXX-XXXX-XXXXLXX

CONNECTOR:
F = FEMALE
M = MALE

WIRING STYLE:
C = STANDARD WIRE
D = TWISTED PAIR

SIGNAL WIRE GAUGE:
1 = 26AWG
2 = 28AWG

WIRE COLOUR:
05 = WHITE
98 = BLACK
99 = RED
68 = MULTI-COLOURS

CONNECTOR FIXING STYLE:
F1/F2/F3/F5/M1/M2/M3/M5

LENGTH OF CABLE
PRE-STRIP (DIM 'B'):
X = 1-9mm

WIRE END:
BLANK = CUT END (SEE NOTE 6)
A = PRE-STRIPPED TO IS-37 & IS-44
(SEE NOTE 7)
S = PRE-STRIPPED CUSTOM LENGTH

DIM 'A' LENGTH:
0060 = 60mm MIN (SEE NOTE 5)
9999 = 9999mm MAX

POWER CONTACTS:
1B1B/1D1D = 2 POWER CONTACTS
2B2B/2D2D = 4 POWER CONTACTS

RTP	4	11.03.25	35836
NAME	ISS.	DATE	CN/CO
APPROVED:		R.PORTLOCK	
CHECKED:		A.BOXALL	
DRAWN:		R.PORTLOCK	

HARWIN

www.harwin.com

TOLERANCES
X. = ±1mm
X.X = ±0.50mm
X.XX = ±0.20mm
X.XXX = ±0.01mm
ANGLES = ±5°
UNLESS STATED

THIS DRAWING AND ANY INFORMATION OR DESCRIPTIVE MATTER SET OUT HEREON ARE CONFIDENTIAL AND COPYRIGHT PROPERTY OF THE HARWIN GROUP AND MUST NOT BE DISCLOSED, LOANED, COPIED OR USED FOR MANUFACTURING, TENDERING OR FOR ANY OTHER PURPOSE WITHOUT THEIR WRITTEN PERMISSION.

MATERIAL & FINISH:
SEE SHEET 6

TITLE:
GECKO-MT SINGLE-ENDED
CABLE ASSEMBLY

DRAWING NUMBER:
G125-XXX08XXXX-XXXX-XXXXLXX

SHT
7
OF
9

Customer Information Sheet

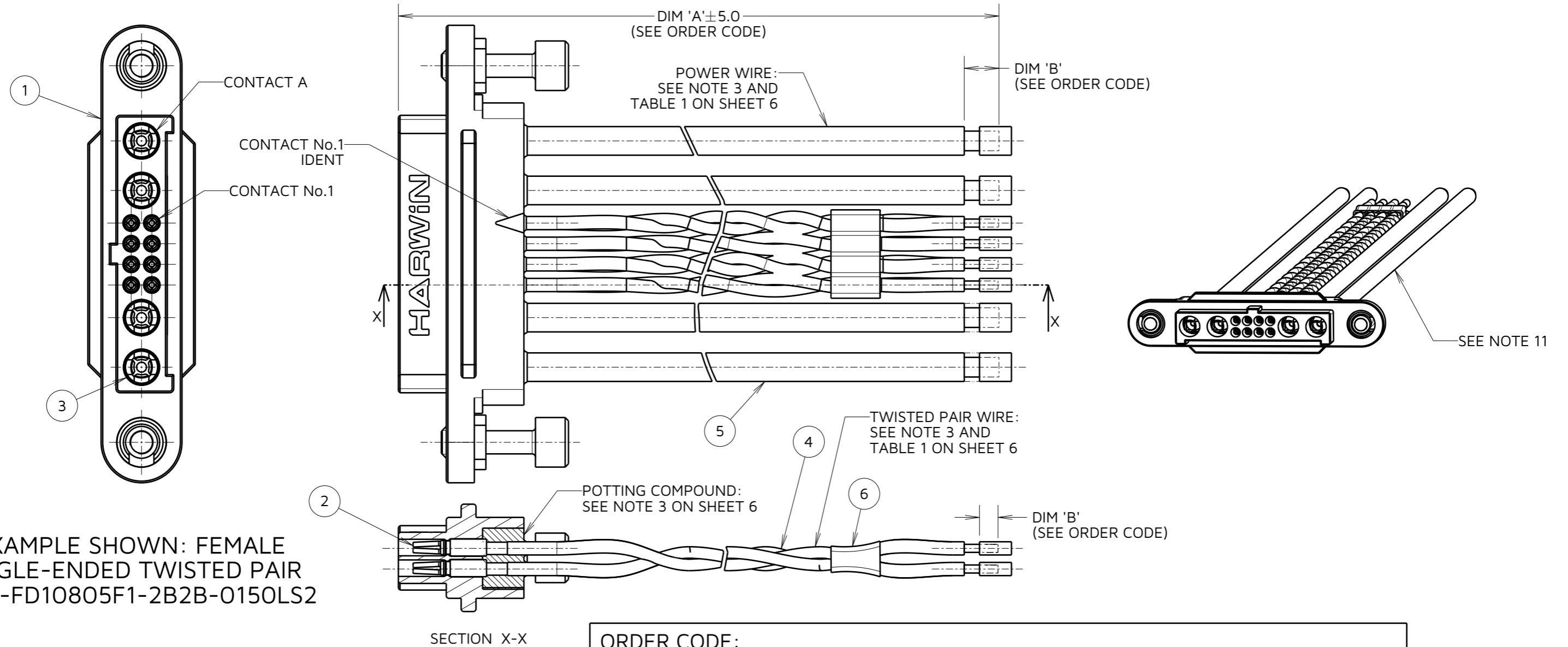
IF IN DOUBT - ASK

©

NOT TO SCALE

THIRD ANGLE PROJECTION

ALL DIMENSIONS IN mm



EXAMPLE SHOWN: FEMALE SINGLE-ENDED TWISTED PAIR G125-FD10805F1-2B2B-0150LS2

TABLE 3: TWISTED PAIR CABLE CONFIGURATIONS			
WIRING FOR EXAMPLE PART No. G125-FD10805F1-2B2B-0150LS2			
TWISTED PAIR No.	CONNECTOR 1 PIN No.	URNS PER INCH	WIRE COLOUR
1	1	3	WHITE & GREEN
	8		
2	2	2	WHITE & RED
	7		
3	3	3	WHITE & GREEN
	6		
4	4	2	WHITE & RED
	5		

SEE BILL OF MATERIALS TABLE ON SHEET 6

ORDER CODE:

G125-XXX08XXXX-XXXX-XXXXLXX

CONNECTOR:
F = FEMALE
M = MALE

WIRING STYLE:
C = STANDARD WIRE
D = TWISTED PAIR

SIGNAL WIRE GAUGE:
1 = 26AWG
2 = 28AWG

WIRE COLOUR:
05 = WHITE
98 = BLACK
99 = RED
68 = MULTI-COLOURED

CONNECTOR FIXING STYLE:
F1/F2/F3/F5/M1/M2/M3/M5

LENGTH OF CABLE PRE-STRIP (DIM 'B'):
X = 1-9mm

WIRE END:
BLANK = CUT END (SEE NOTE 6)
A = PRE-STRIPPED TO IS-37 & IS-44 (SEE NOTE 7)
S = PRE-STRIPPED CUSTOM LENGTH

DIM 'A' LENGTH:
0060 = 60mm MIN (SEE NOTE 5)
9999 = 9999mm MAX

POWER CONTACTS:
1B1B/1D1D = 2 POWER CONTACTS
2B2B/2D2D = 4 POWER CONTACTS

NOTES:
10. FOR POSSIBLE COMBINATIONS, SEE BOM TABLE ON SHEET 6.
11. ASSEMBLY SHOWN FOR ILLUSTRATIVE PURPOSES ONLY.
SEE ORDER CODE FOR PART NUMBER.

HARWIN

www.harwin.com

TOLERANCES
X. = ±1mm
X.X = ±0.50mm
X.XX = ±0.20mm
X.XXX = ±0.01mm
ANGLES = ±5°
UNLESS STATED

THIS DRAWING AND ANY INFORMATION OR DESCRIPTIVE MATTER SET OUT HEREON ARE CONFIDENTIAL AND COPYRIGHT PROPERTY OF THE HARWIN GROUP AND MUST NOT BE DISCLOSED, LOANED, COPIED OR USED FOR MANUFACTURING, TENDERING OR FOR ANY OTHER PURPOSE WITHOUT THEIR WRITTEN PERMISSION.

MATERIAL & FINISH:
SEE SHEET 6

TITLE:
GECKO-MT SINGLE-ENDED CABLE ASSEMBLY

DRAWING NUMBER:
G125-XXX08XXXX-XXXX-XXXXLXX

RTP	4	11.03.25	35836
NAME	ISS.	DATE	CN/CO
APPROVED:		R.PORTLOCK	
CHECKED:		A.BOXALL	
DRAWN:		R.PORTLOCK	

Customer Information Sheet

IF IN DOUBT - ASK



NOT TO SCALE

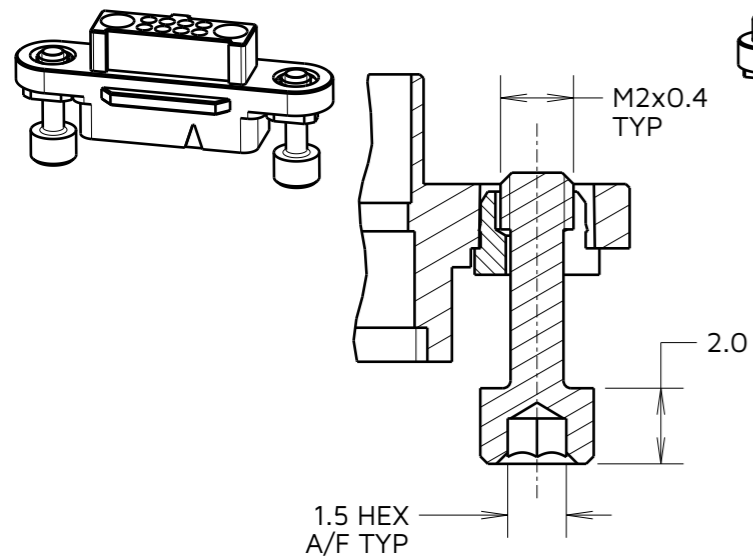
THIRD ANGLE PROJECTION

ALL DIMENSIONS IN mm

FIXING STYLES

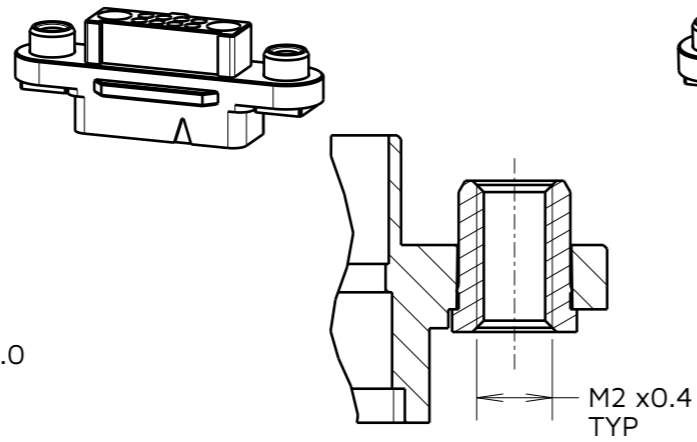
F1 - SCREW LOCK

EXAMPLE: G125-22496F1-01-08-01



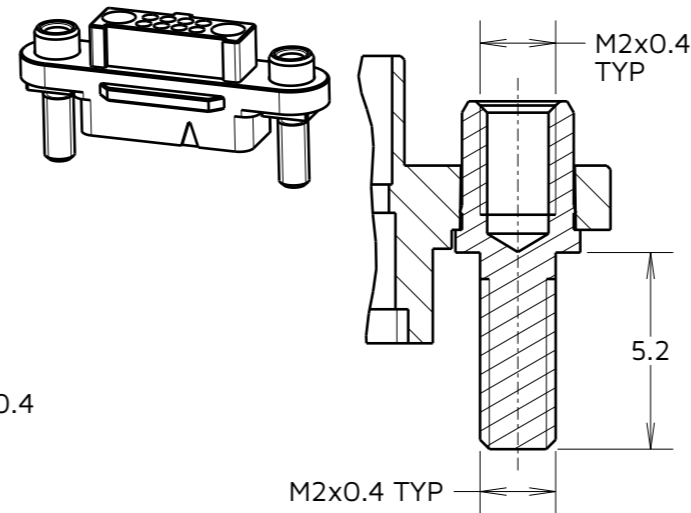
F2 - REVERSE FIX

EXAMPLE: G125-22496F2-01-08-01



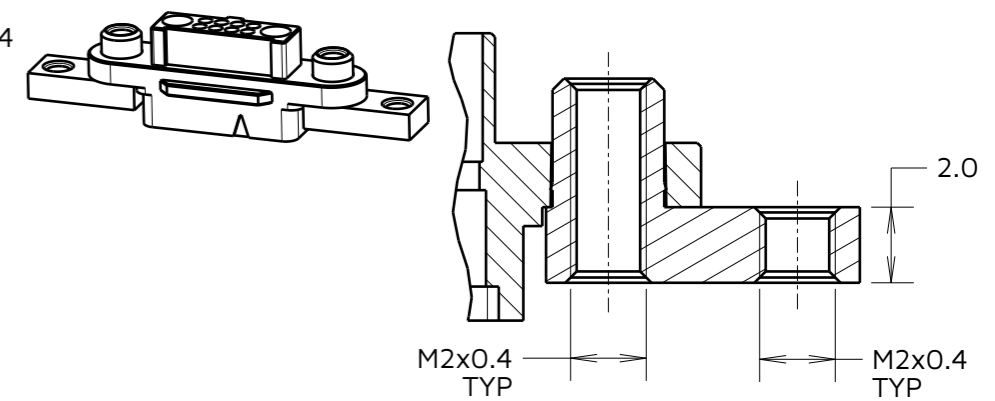
F3 - REVERSE FIX PANEL

EXAMPLE: G125-22496F3-01-08-01



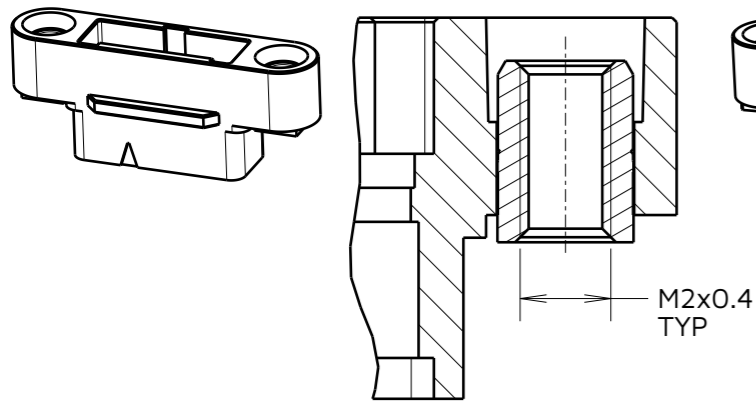
F5 - REAR PANEL MOUNT

EXAMPLE: G125-22496F5-01-08-01



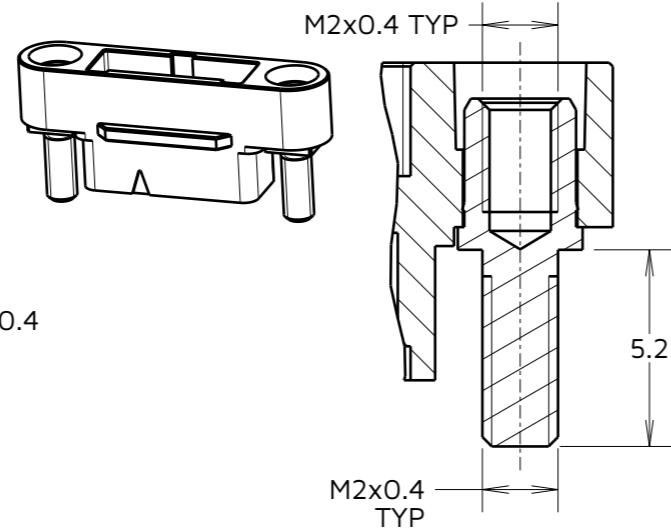
M1 - SCREW LOCK

EXAMPLE: G125-32496M1-01-08-01



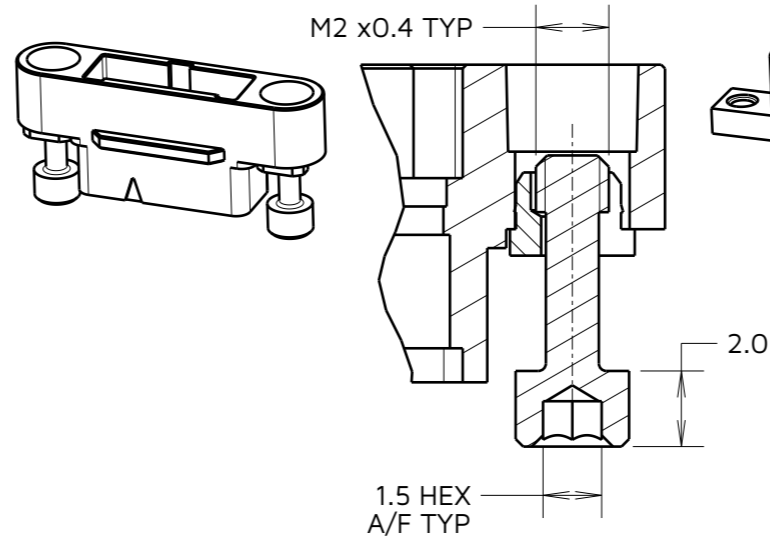
M2 - REVERSE FIX PANEL

EXAMPLE: G125-32496M2-01-08-01



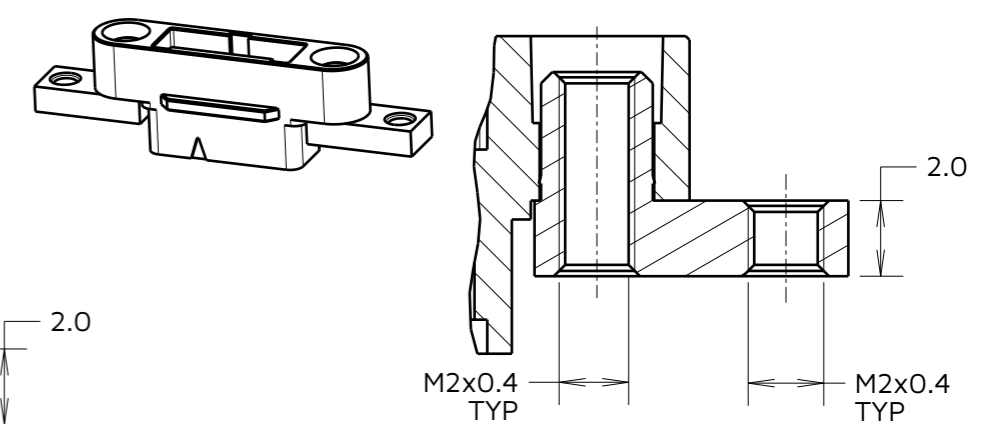
M3 - REVERSE FIX

EXAMPLE: G125-32496M3-01-08-01



M5 - REAR PANEL MOUNT

EXAMPLE: G125-32496M5-01-08-01



NOTES:
12. SEE BILL OF MATERIALS TABLE ON SHEET 6 AND ORDER CODE FOR FIXING IDENTIFICATION.

HARWIN

www.harwin.com

TOLERANCES
X. = ±1mm
X.X = ±0.50mm
X.XX = ±0.20mm
X.XXX = ±0.01mm
ANGLES = ±5°
UNLESS STATED

THIS DRAWING AND ANY INFORMATION OR DESCRIPTIVE MATTER SET OUT HEREON ARE CONFIDENTIAL AND COPYRIGHT PROPERTY OF THE HARWIN GROUP AND MUST NOT BE DISCLOSED, LOANED, COPIED OR USED FOR MANUFACTURING, TENDERING OR FOR ANY OTHER PURPOSE WITHOUT THEIR WRITTEN PERMISSION.

MATERIAL & FINISH:
SEE SHEET 6

TITLE:
GECKO-MT SINGLE-ENDED CABLE ASSEMBLY

DRAWING NUMBER:
G125-XXX08XXXX-XXXX-XXXXLXX

SHT
9
OF
9

RTP	4	11.03.25	35836
NAME	ISS.	DATE	CN/CO
APPROVED:		R.PORTLOCK	
CHECKED:		A.BOXALL	
DRAWN:		R.PORTLOCK	