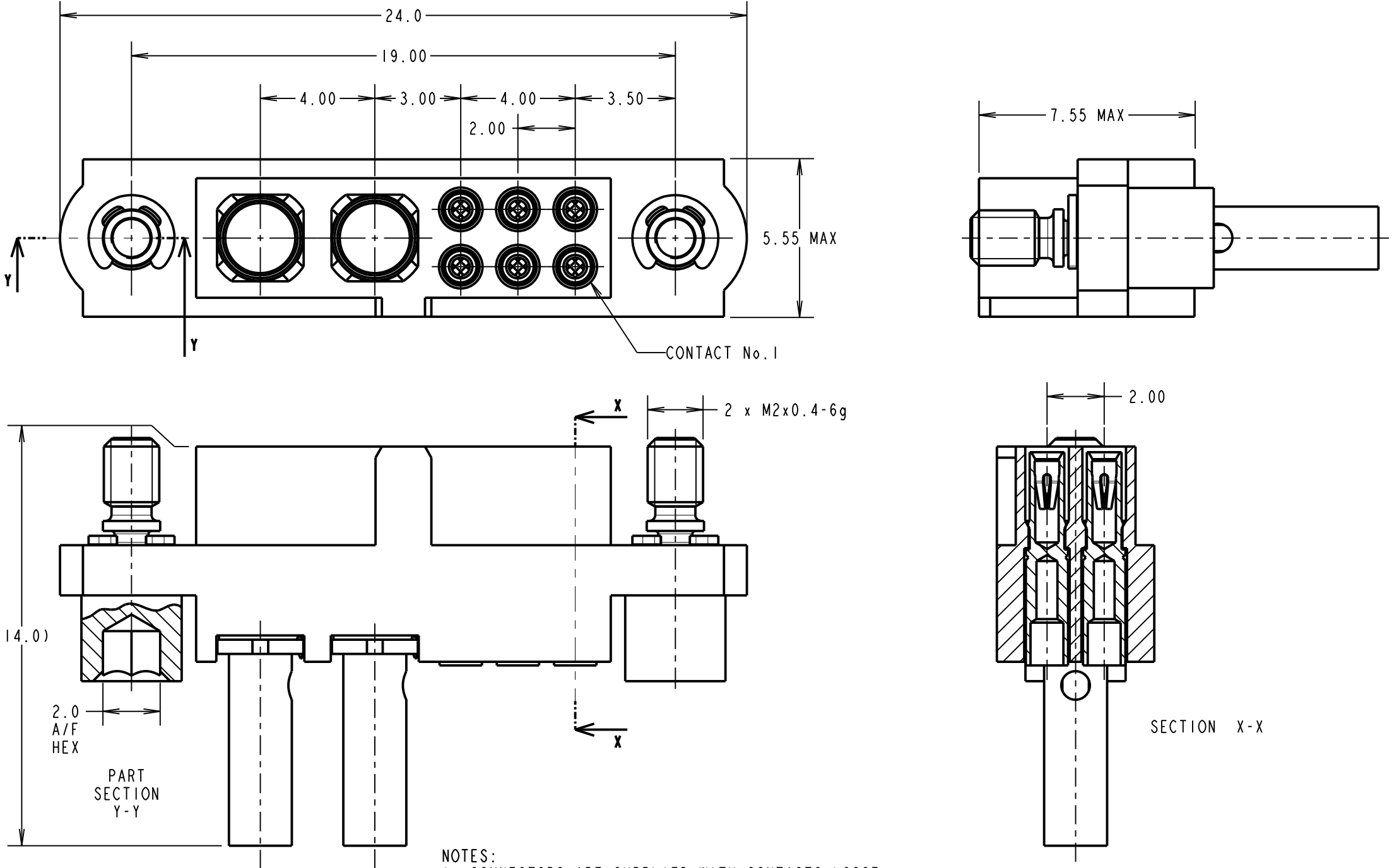


# Customer Information Sheet

DRAWING No.: M80-4C10605F2-00-000-02-329 SHEET 2 OF 2 IF IN DOUBT - ASK © NOT TO SCALE THIRD ANGLE PROJECTION ALL DIMENSIONS IN mm

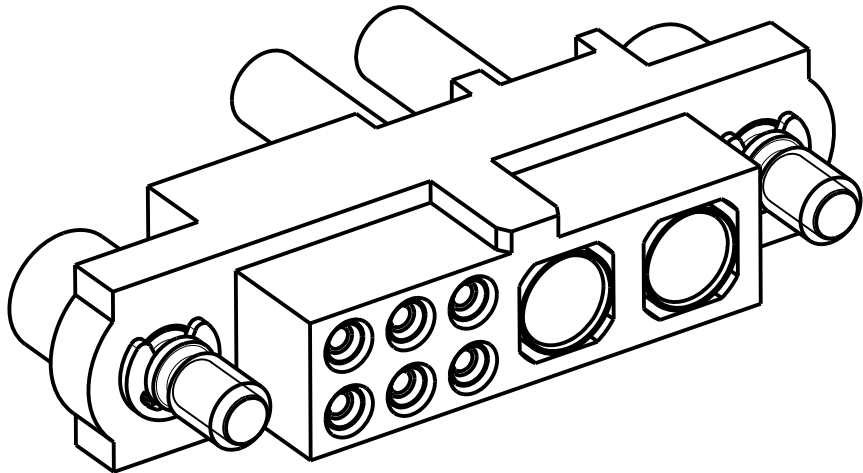
## SPECIFICATIONS:

**MATERIAL:**  
MOULDING: GLASS FILLED PPS, UL94V-0, BLACK  
**SIGNAL CONTACT:**  
CLIP = BERYLLIUM COPPER  
SHELL = BRASS  
**POWER CONTACT:**  
BODY = COPPER ALLOY  
LATCHING COLLAR = BERYLLIUM COPPER  
JACKSCREW, CIRCLIP: STAINLESS STEEL  
**FINISH:**  
**SIGNAL CONTACT:**  
CLIP = 0.3µ GOLD  
SHELL = 0.25-0.3µ GOLD  
**POWER CONTACT:**  
BODY = GOLD  
LATCHING COLLAR = NICKEL  
**ELECTRICAL:**  
WORKING VOLTAGE = 1200V AC/DC  
VOLTAGE PROOF = 800V AC/DC  
INSULATION RESISTANCE = 100MΩ MIN  
**SIGNAL CONTACT:**  
CURRENT RATING AT 25°C = 3.0A MAX  
CURRENT RATING AT 85°C = 2.2A MAX  
CONTACT RESISTANCE = 25 mΩ MAX  
**POWER CONTACT:**  
CONTACT RESISTANCE = 6 mΩ MAX  
CURRENT RATING = 5A MAX WITH 20AWG  
CONTACT AS SPECIFIED  
**MECHANICAL:**  
DURABILITY = 500 OPERATIONS  
**SIGNAL CONTACT:**  
INSERTION FORCE = 2.0N MAX  
WITHDRAWAL FORCE = 0.2N MIN  
**POWER CONTACT:**  
INSERTION FORCE = 8N MAX  
WITHDRAWAL FORCE = 0.5N MIN  
**ENVIRONMENTAL:**  
TEMPERATURE RANGE = -55°C TO +125°C  
**PACKING:**  
BAG  
FOR COMPLETE SPECIFICATION SEE COMPONENT  
SPECIFICATION C005XX (LATEST ISSUE)



- NOTES:
- CONNECTORS ARE SUPPLIED WITH CONTACTS LOOSE.
  - FOR EXTRA SIGNAL CONTACTS, USE PART NUMBER M80-0130005.
  - RECOMMENDED SIGNAL WIRE TYPE = BS 3G 210 TYPE A, PTFE INSULATED 24-28 AWG. MAX INSULATION DIAMETER = Ø1.10mm. STRIP WIRE BY 2.00MM FOR CRIMPING.
  - RECOMMENDED HAND CRIMP TOOL FOR SIGNAL CONTACTS = M22520/2-01 WITH POSITIONER T5747.
  - SIGNAL CONTACT INSERTION AND EXTRACTION TOOL = Z80-280.
  - FOR EXTRA POWER CONTACTS, USE PART NUMBER M80-329
  - RECOMMENDED HAND CRIMP TOOL FOR POWER CONTACTS = Z80-294 WITH POSITIONER Z80-295.
  - POWER CONTACT WIRE, STRIP BY 5.00mm MINIMUM
  - POWER CONTACT EXTRACTION TOOL = Z80-290
  - INSTRUCTION SHEETS ARE AVAILABLE.

MGP	I	24.09.14	----
NAME	ISS.	DATE	C/NOTE
APPROVED: MGP			
CHECKED: MS			
DRAWN: M.G.PLESTED			
CUSTOMER REF.:			
ASSEMBLY DRG:			



**HARWIN**

www.harwin.com  
technical@harwin.com

THIS DRAWING AND ANY  
INFORMATION OR DESCRIPTIVE  
MATTER SET OUT HEREON ARE  
CONFIDENTIAL AND COPYRIGHT  
PROPERTY OF THE HARWIN  
GROUP AND MUST NOT BE  
DISCLOSED, LOANED, COPIED  
OR USED FOR MANUFACTURING,  
TENDERING OR FOR ANY  
OTHER PURPOSE WITHOUT  
THEIR WRITTEN PERMISSION.

**TOLERANCES**  
X. = ±1mm  
X.X = ±0.50mm  
X.XX = ±0.10mm  
X.XXX = ±0.01mm  
ANGLES = ±5°  
UNLESS STATED

**MATERIAL:**

SEE ABOVE

**FINISH:**

SEE ABOVE

**S/AREA:**

mm²

**TITLE:** JACKSCREW DATAMATE  
MIXED TECHNOLOGY  
CRIMP FEMALE ASSEMBLY

**DRAWING NUMBER:**

**M80-4C10605F2-00-000-02-329**

SHT  
2 OF 2