

# Customer Information Sheet

IF IN DOUBT - ASK

©

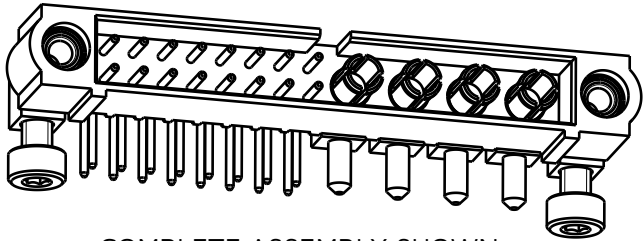
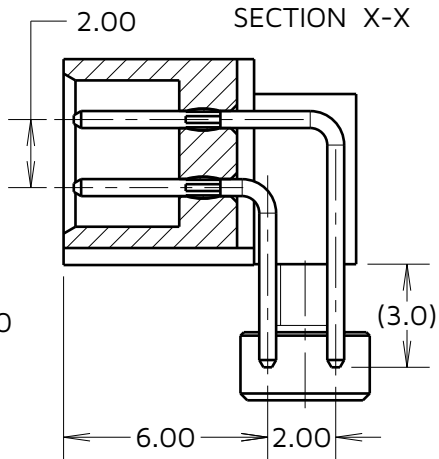
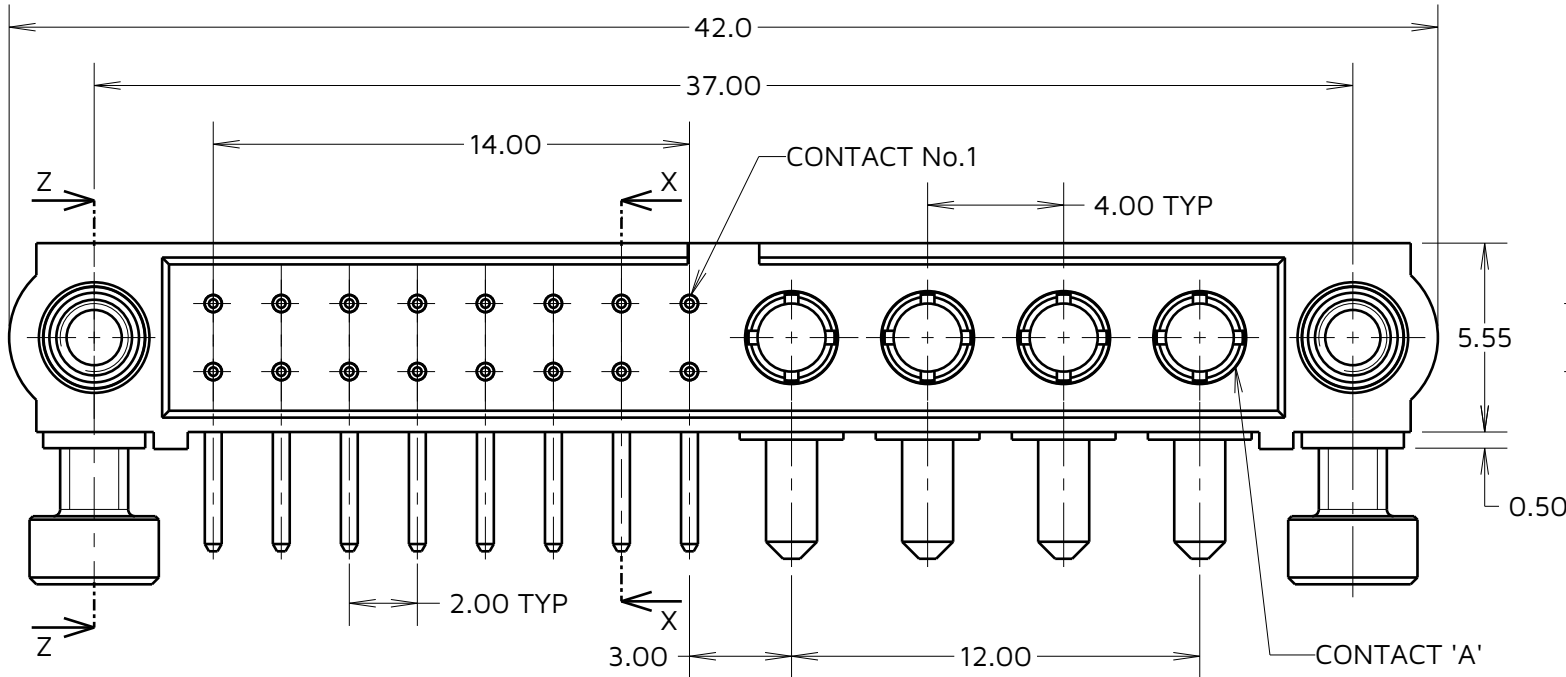
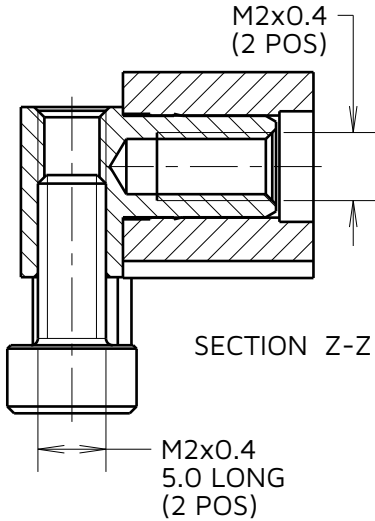
NOT TO SCALE

THIRD ANGLE PROJECTION

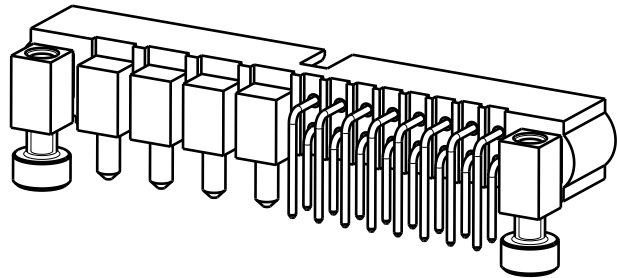
ALL DIMENSIONS IN mm

## SPECIFICATIONS:

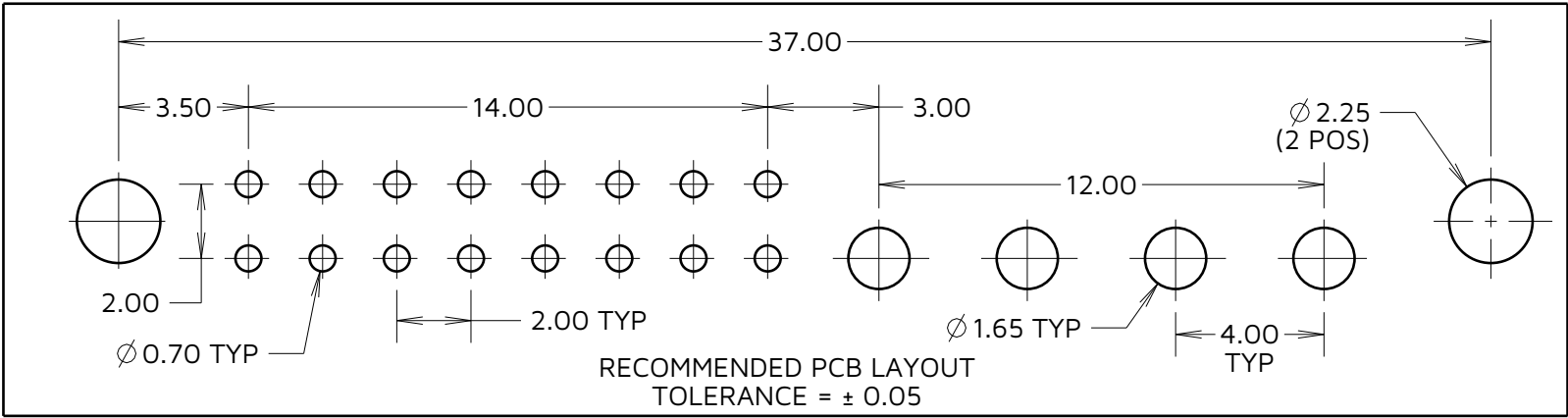
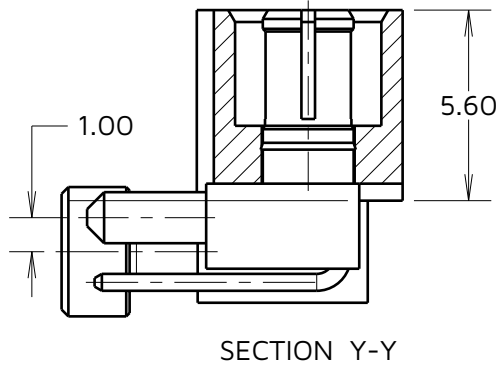
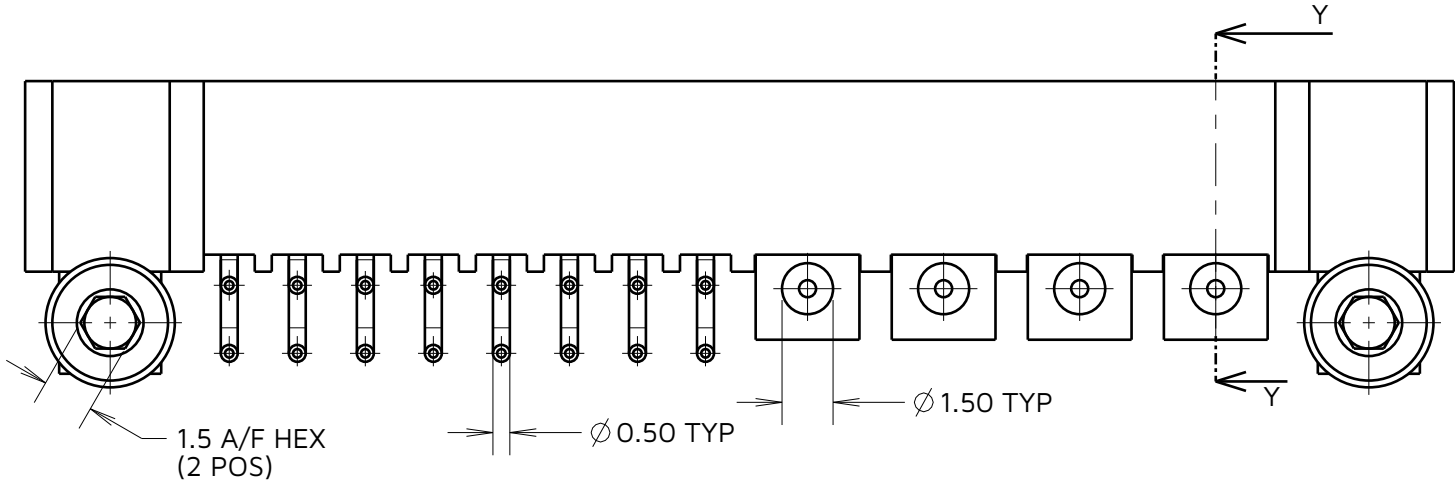
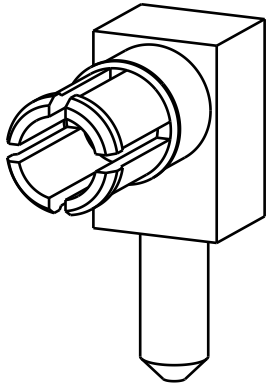
MATERIAL:  
HOUSING: GLASS FILLED PPS, UL94V-0, BLACK  
SIGNAL CONTACT: PHOSPHOR BRONZE  
POWER CONTACT: COPPER ALLOY  
BOARD-MOUNT JACKSCREW, SCREW: STAINLESS STEEL  
FINISH:  
SIGNAL CONTACT:  
GOLD ON CONTACT AREA,  
100% TIN OVER NICKEL ON TAILS  
POWER CONTACT: GOLD  
PACKING:  
TUBE  
FOR COMPLETE SPECIFICATION SEE  
COMPONENT SPECIFICATION C005XX  
(LATEST ISSUE)



COMPLETE ASSEMBLY SHOWN  
FOR ILLUSTRATION ONLY



VIEW OF  
POWER CONTACT



RECOMMENDED PCB LAYOUT  
TOLERANCE = ± 0.05

NOTES:  
1. SCREWS ARE SUPPLIED LOOSE IN A BAG, NOT ASSEMBLED AS SHOWN

HARWIN

www.harwin.com

TOLERANCES  
X. = ±1mm  
X.X = ±0.50mm  
X.XX = ±0.20mm  
X.XXX = ±0.01mm  
ANGLES = ±5°  
UNLESS STATED

THIS DRAWING AND ANY  
INFORMATION OR DESCRIPTIVE  
MATTER SET OUT HEREON ARE  
CONFIDENTIAL AND COPYRIGHT  
PROPERTY OF THE HARWIN GROUP  
AND MUST NOT BE DISCLOSED,  
LOANED, COPIED OR USED FOR  
MANUFACTURING, TENDERING OR FOR  
ANY OTHER PURPOSE WITHOUT THEIR  
WRITTEN PERMISSION.

MATERIAL & FINISH:  
  
SEE ABOVE

TITLE: JACKSCREW DATAMATE  
MIXED TECHNOLOGY HORIZONTAL  
PC TAIL MALE ASSEMBLY

DRAWING NUMBER:  
M80-5L11605M7-04-333-00-000

SHT  
2  
OF  
2

MJ	3	07.11.24	34803
NAME	ISS.	DATE	CN/CO
APPROVED: M. JELLEY			
CHECKED: R. ALEXANDER			
DRAWN: C.PENROSE			