

Customer Information Sheet

IF IN DOUBT - ASK



NOT TO SCALE

THIRD ANGLE PROJECTION

ALL DIMENSIONS IN mm

TABLE 1: ORDER CODE AND BILL OF MATERIALS (SEE NOTE 1)

M80-XXXXXXXX-XXXXLXX	CONNECTOR	CONNECTOR CONTACT	WIRE	HEATSHRINK
		SEE ORDER CODE FOR TOTAL No. OF CONTACTS		
	①	②	③	④

TABLE 2: MULTI-COLOURED WIRE
(FOR '68' OPTION ONLY)

CONTACT No.	WIRE COLOUR
1	BLACK
2	BROWN
3	RED
4	ORANGE
5	YELLOW
6	GREEN
7	BLUE
8	VIOLET
9	GREY
10	WHITE
WIRE COLOURS REPEAT IN ABOVE ORDER FOR CONNECTOR ASSEMBLIES OVER 10 CONTACTS	

ORDER CODE:

M80-XXXXXXXX-XXXXLXX

GENDER:
F = FEMALE
M = MALE

CONNECTOR TYPE:
C = STANDARD J-TEK
B = T-CONTACT
E = BACKPOTTING 5mm WALL
F = BACKPOTTING 1mm WALL

WIRE GAUGE:
1 = 22AWG - 19 STRAND PTFE
2 = 24AWG - 7 STRAND PTFE
3 = 26AWG - 19 STRAND PTFE
4 = 28AWG - 7 STRAND PTFE
5 = 30AWG - 7 STRAND PTFE

TOTAL NUMBER OF CONTACTS:
04-50 (EVEN ONLY)

DIM 'B'
STRIPPED LENGTH:
BLANK = ENDS CUT
01 = 1mm MIN
09 = 9mm MAX

DIM 'A'
CABLE LENGTH:
0060 = 0060mm MIN
9999 = 9999mm MAX
FIXING STYLE:
F0 = NO HARDWARE (FEMALE)
F1 = HEX SLOTTED JACKSCREW
F2 = HEX SOCKET JACKSCREW
FC = 101LOK
M0 = NO HARDWARE (MALE)
M1 = JACKSCREW NUT
MA = REVERSE FIX SLOTTED JACKSCREW
MB = REVERSE FIX SOCKET JACKSCREW
MC = 101LOK RETAINER

WIRE STYLE:
05 = WHITE
67 = TWISTED
68 = MULTI- COLOURED
(SEE TABLE 2)
73 = PLASTIC SHIELDED
74 = PLASTIC SHIELDED & TWISTED
98 = BLACK
99 = RED

- NOTES:
- FOR MECHANICAL AND ELECTRICAL SPECIFICATIONS, SEE COMPONENT SPECIFICATION C005XX (LATEST ISSUE).
 - FOR WIRE SPECIFICATION, GAUGE AND TYPE, AND BACKPOTTING SPECIFICATION, SEE COMPONENT SPECIFICATION C049XX (LATEST ISSUE).
 - PACKING: INDIVIDUALLY PACKED IN BAGS.
 - TWISTED PAIR CONFIGURATIONS ARE POSSIBLE FOR ALL CONNECTOR TYPES.

RTP	2	14.04.25	35978
NAME	ISS.	DATE	CN/CO
APPROVED: R.PORTLOCK			
CHECKED: R.ALEXANDER			
DRAWN: R.PORTLOCK			

HARWIN

www.harwin.com

TOLERANCES
X. = $\pm 1\text{mm}$
X.X = $\pm 0.50\text{mm}$
X.XX = $\pm 0.20\text{mm}$
X.XXX = $\pm 0.01\text{mm}$
ANGLES = $\pm 5^\circ$
UNLESS STATED

THIS DRAWING AND ANY
INFORMATION OR DESCRIPTIVE
MATTER SET OUT HEREON ARE
CONFIDENTIAL AND COPYRIGHT
PROPERTY OF THE HARWIN GROUP
AND MUST NOT BE DISCLOSED,
LOANED, COPIED OR USED FOR
MANUFACTURING, TENDERING OR FOR
ANY OTHER PURPOSE WITHOUT THEIR
WRITTEN PERMISSION.

MATERIAL & FINISH:

SEE ABOVE

TITLE:
**M80 J-TEK SINGLE ENDED
CABLE ASSEMBLY**

DRAWING NUMBER:
M80-XXXXXXXX-XXXXLXX

SHT
9
OF
16

Customer Information Sheet

IF IN DOUBT - ASK

©

NOT TO SCALE

THIRD ANGLE PROJECTION

ALL DIMENSIONS IN mm

CONNECTOR TYPE: C - STANDARD J-TEK

EXAMPLE PART No.
M80-FC10405F1-0150L05

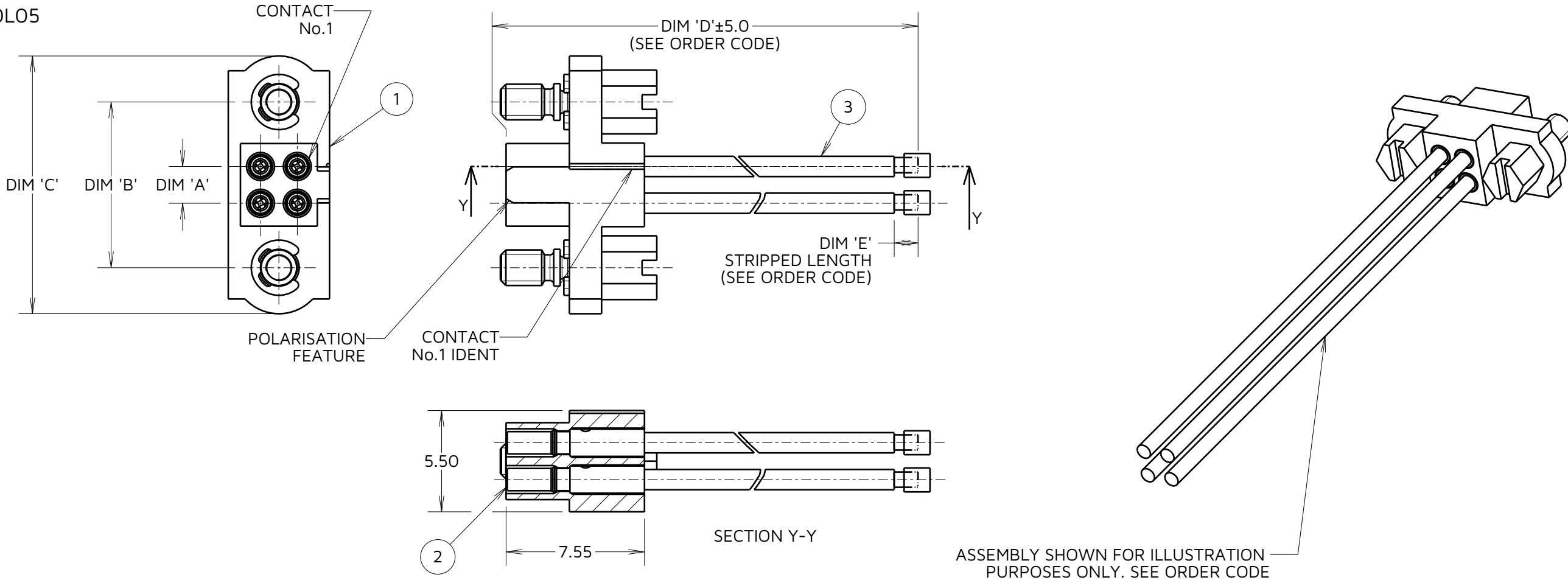


TABLE 3: DIMENSION CALCULATIONS	
DIMENSION	MEASUREMENT
DIM 'A'	TOTAL No. OF CONTACTS - 2.00
DIM 'B'	TOTAL No. OF CONTACTS + 5.00
DIM 'C'	TOTAL No. OF CONTACTS + 10.0

ORDER CODE:

M80-XCXXXXXXXX-XXXXLXX

CONNECTOR 1 GENDER:

F = FEMALE
M = MALE

CONNECTOR TYPE:

C = STANDARD J-TEK

WIRE GAUGE:

NO RESTRICTIONS
(SEE ORDER CODE ON SHEET 9)

TOTAL NUMBER OF CONTACTS:

04-50 (EVEN ONLY)

WIRE STYLE:

05 = WHITE
67 = TWISTED
68 = MULTI-COLOURED (SEE TABLE 2 ON SHEET 9)
98 = BLACK
99 = RED

DIM 'E' STRIPPED LENGTH:

BLANK = BLUNT CUT
01 = 1mm MIN
09 = 9mm MAX

DIM 'D'

CABLE LENGTH:
0060 = 0060mm MIN
9999 = 9999mm MAX

CONN. 1 FIXING STYLE:

FO/F1/F2/FC/
MO/M1/MA/MB/MC
(SEE SHEET 9 FOR DESC.)

NOTES:

5. ASSEMBLIES SHOWN FOR ILLUSTRATIVE PURPOSES AND WILL DIFFER ON A PART NUMBER BASIS. SEE ORDER CODE ON THIS SHEET.

HARWIN

www.harwin.com

TOLERANCES

X. = ±1mm
X.X = ±0.50mm
X.XX = ±0.20mm
X.XXX = ±0.01mm

ANGLES = ±5°

UNLESS STATED

THIS DRAWING AND ANY INFORMATION OR DESCRIPTIVE MATTER SET OUT HEREON ARE CONFIDENTIAL AND COPYRIGHT PROPERTY OF THE HARWIN GROUP AND MUST NOT BE DISCLOSED, LOANED, COPIED OR USED FOR MANUFACTURING, TENDERING OR FOR ANY OTHER PURPOSE WITHOUT THEIR WRITTEN PERMISSION.

MATERIAL & FINISH:

SEE SHEET 9

TITLE:

M80 J-TEK SINGLE ENDED
CABLE ASSEMBLY

DRAWING NUMBER:

M80-XXXXXXXX-XXXXLXX

SHT

10

OF

16

RTP	2	14.04.25	35978
NAME	ISS.	DATE	CN/CO
APPROVED: R.PORTLOCK			
CHECKED: R.ALEXANDER			
DRAWN: R.PORTLOCK			

Customer Information Sheet

IF IN DOUBT - ASK

©

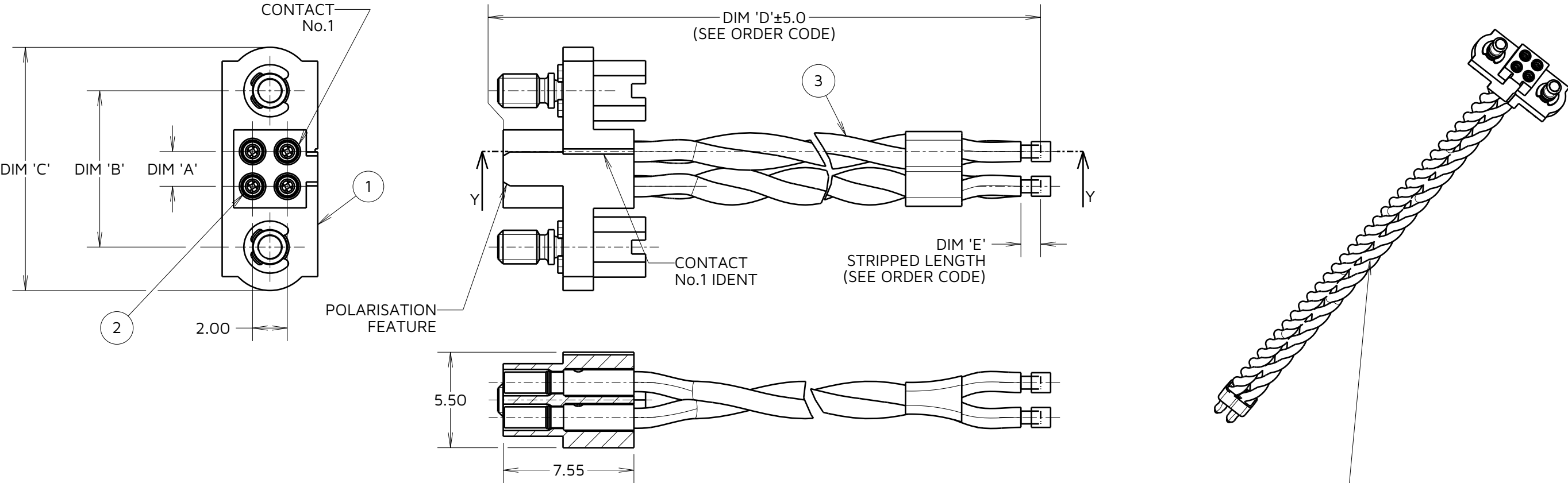
NOT TO SCALE

THIRD ANGLE PROJECTION

ALL DIMENSIONS IN mm

CONNECTOR TYPE: C - STANDARD J-TEK TWISTED PAIR

EXAMPLE PART No.
M80-FC10467F1-0150L05



ASSEMBLY SHOWN FOR ILLUSTRATION PURPOSES ONLY. SEE ORDER CODE

TABLE 4: DIMENSION CALCULATIONS	
DIMENSION	MEASUREMENT
DIM 'A'	TOTAL No. OF CONTACTS - 2.00
DIM 'B'	TOTAL No. OF CONTACTS + 5.00
DIM 'C'	TOTAL No. OF CONTACTS + 10.0

TABLE 5: TWISTED PAIR CABLE CONFIGURATIONS			
WIRING FOR EXAMPLE PART No. M80-FC10467F1-0150L05			
TWISTED PAIR No.	CONNECTOR 1 PIN No.	TURNS PER INCH (TPI)	WIRE COLOUR
1	1	3	WHITE & GREEN
	3		
2	2	2	WHITE & RED
	4		
FOR CONNECTORS WITH MORE THAN 4 SIGNAL CONTACTS, CONTINUE TWIST & CABLE PIN OUT CONVENTION IN THE SAME PATTERN. THIS ALTERNATES BETWEEN 3TPI (WHITE & GREEN) & 2TPI (WHITE & RED)			

ORDER CODE:

M80-XCXXX67XX-XXXXLXX

CONNECTOR 1 GENDER:

F = FEMALE
M = MALE

CONNECTOR TYPE:
C = STANDARD J-TEK

WIRE GAUGE:
NO RESTRICTIONS
(SEE ORDER CODE ON SHEET 8)

TOTAL NUMBER OF CONTACTS:
04-50 (EVEN ONLY)

WIRE STYLE:
67 = TWISTED

DIM 'E' STRIPPED LENGTH:
BLANK = BLUNT CUT
01 = 1mm MIN
09 = 9mm MAX

DIM 'D'
CABLE LENGTH:
0060 = 0060mm MIN
9999 = 9999mm MAX

CONN. 1 FIXING STYLE:
FO/F1/F2/FC/
MO/M1/MA/MB/MC
(SEE SHEET 8 FOR DESC.)

NOTES:
6. ASSEMBLIES SHOWN FOR ILLUSTRATIVE PURPOSES AND WILL DIFFER ON A PART NUMBER BASIS. SEE ORDER CODE ON THIS SHEET. SEE TABLE 5 FOR TWISTED PAIR WIRING CONVENTION.

HARWIN

www.harwin.com

TOLERANCES
X. = $\pm 1\text{mm}$
X.X = $\pm 0.50\text{mm}$
X.XX = $\pm 0.20\text{mm}$
X.XXX = $\pm 0.01\text{mm}$
ANGLES = $\pm 5^\circ$
UNLESS STATED

THIS DRAWING AND ANY INFORMATION OR DESCRIPTIVE MATTER SET OUT HEREON ARE CONFIDENTIAL AND COPYRIGHT PROPERTY OF THE HARWIN GROUP AND MUST NOT BE DISCLOSED, LOANED, COPIED OR USED FOR MANUFACTURING, TENDERING OR FOR ANY OTHER PURPOSE WITHOUT THEIR WRITTEN PERMISSION.

MATERIAL & FINISH:

SEE SHEET 9

TITLE:
M80 J-TEK SINGLE ENDED
CABLE ASSEMBLY

DRAWING NUMBER:
M80-XXXXXXXXXX-XXXXLXX

SHT
11
OF
16

RTP	2	14.04.25	35978
NAME	ISS.	DATE	CN/CO
APPROVED: R.PORTLOCK			
CHECKED: R.ALEXANDER			
DRAWN: R.PORTLOCK			

Customer Information Sheet

IF IN DOUBT - ASK

©

NOT TO SCALE

THIRD ANGLE PROJECTION

ALL DIMENSIONS IN mm

CONNECTOR TYPE: B - T-CONTACT

EXAMPLE PART No.
M80-FB10405F1-0150L05

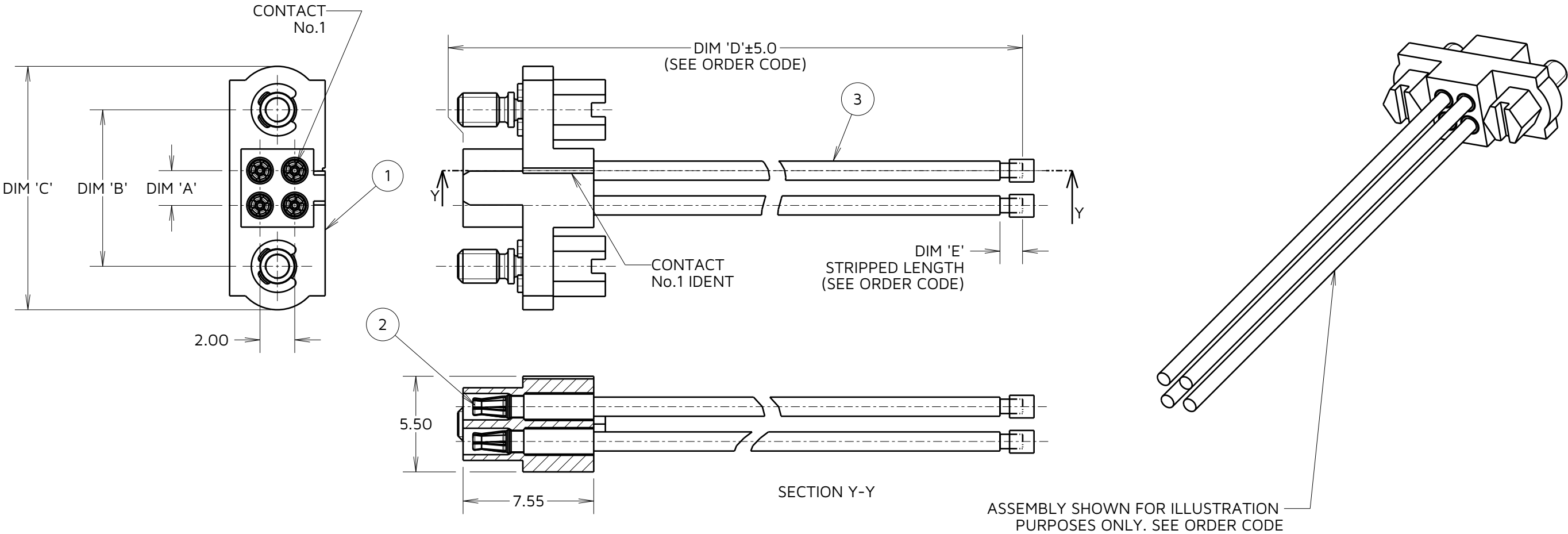


TABLE 6: DIMENSION CALCULATIONS	
DIMENSION	MEASUREMENT
DIM 'A'	TOTAL No. OF CONTACTS - 2.00
DIM 'B'	TOTAL No. OF CONTACTS + 5.00
DIM 'C'	TOTAL No. OF CONTACTS + 10.0

ORDER CODE:

M80-FBXXXXXXXX-XXXXLXX

CONNECTOR 1 GENDER:
F = FEMALE

CONNECTOR TYPE:
B = T-CONTACT

WIRE GAUGE:
NO RESTRICTIONS
(SEE ORDER CODE ON SHEET 8)

TOTAL NUMBER OF CONTACTS:
04-50 (EVEN ONLY)

WIRE STYLE:
05 = WHITE
67 = TWISTED
68 = MULTI-COLOURED (SEE TABLE 2 ON SHEET 8)
98 = BLACK
99 = RED

DIM 'E' STRIPPED LENGTH:
BLANK = BLUNT CUT
01 = 1mm MIN
09 = 9mm MAX

DIM 'D'
CABLE LENGTH:
0060 = 0060mm MIN
9999 = 9999mm MAX

CONN. 1 FIXING STYLE:
FO/F1/F2/FC
(SEE SHEET 8 FOR DESC.)

NOTES:
7. ASSEMBLIES SHOWN FOR ILLUSTRATIVE PURPOSES AND WILL DIFFER ON A PART NUMBER BASIS. SEE ORDER CODE ON THIS SHEET.

HARWIN

www.harwin.com

TOLERANCES
X. = ±1mm
X.X = ±0.50mm
X.XX = ±0.20mm
X.XXX = ±0.01mm
ANGLES = ±5°
UNLESS STATED

THIS DRAWING AND ANY INFORMATION OR DESCRIPTIVE MATTER SET OUT HEREON ARE CONFIDENTIAL AND COPYRIGHT PROPERTY OF THE HARWIN GROUP AND MUST NOT BE DISCLOSED, LOANED, COPIED OR USED FOR MANUFACTURING, TENDERING OR FOR ANY OTHER PURPOSE WITHOUT THEIR WRITTEN PERMISSION.

MATERIAL & FINISH:

SEE SHEET 9

TITLE:
M80 J-TEK SINGLE ENDED
CABLE ASSEMBLY

DRAWING NUMBER:
M80-XXXXXXXX-XXXXLXX

SHT
12
OF
16

RTP	2	14.04.25	35978
NAME	ISS.	DATE	CN/CO
APPROVED: R.PORTLOCK			
CHECKED: R.ALEXANDER			
DRAWN: R.PORTLOCK			

Customer Information Sheet

IF IN DOUBT - ASK © NOT TO SCALE THIRD ANGLE PROJECTION ALL DIMENSIONS IN mm

CONNECTOR TYPE: E & F - EXTENDED POTTING WALL

EXAMPLE PART No.
M80-FE10405F1-0150LO5

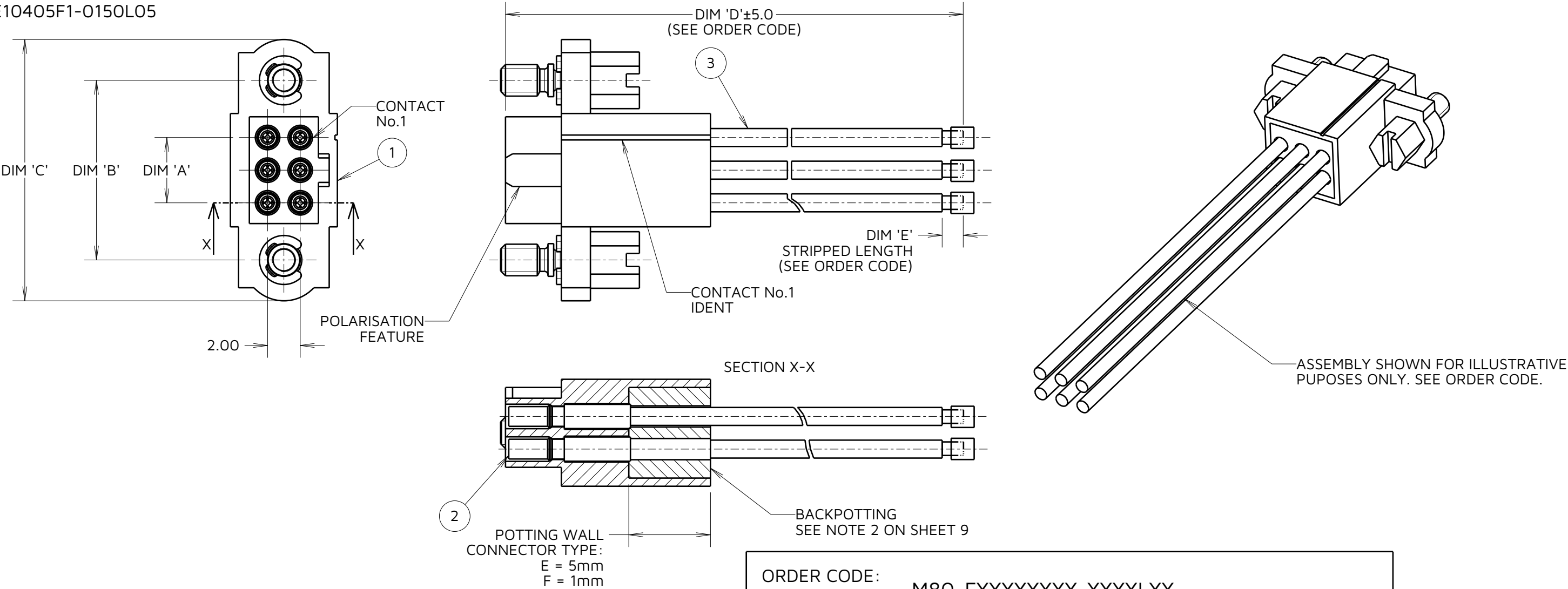


TABLE 7: DIMENSION CALCULATIONS	
DIMENSION	MEASUREMENT
DIM 'A'	TOTAL No. OF CONTACTS - 2.00
DIM 'B'	TOTAL No. OF CONTACTS + 5.00
DIM 'C'	TOTAL No. OF CONTACTS + 10.0

ORDER CODE: M80-FXXXXXXXX-XXXXLXX

CONNECTOR 1 GENDER:
F = FEMALE

CONNECTOR TYPE:
E = 5mm POTTING WALL
F = 1mm POTTING WALL

WIRE GAUGE:
NO RESTRICTIONS
(SEE ORDER CODE ON SHEET 9)

TOTAL NUMBER OF CONTACTS:
04-50 (EVEN ONLY)

WIRE STYLE:
05 = WHITE
67 = TWISTED
68 = MULTI-COLOURED (SEE TABLE 2 ON SHEET 9)
98 = BLACK
99 = RED

DIM 'E' STRIPPED LENGTH:
BLANK = BLUNT CUT
01 = 1mm MIN
09 = 9mm MAX

DIM 'D'
CABLE LENGTH:
0060 = 0060mm MIN
9999 = 9999mm MAX

CONN. 1 FIXING STYLE:
FO/F1/F2/FC/
MO/M1/MA/MB/MC
(SEE SHEET 9 FOR DESC.)

- NOTES:
- 8. ASSEMBLIES SHOWN FOR ILLUSTRATIVE PURPOSES AND WILL DIFFER ON A PART NUMBER BASIS. SEE ORDER CODE ON THIS SHEET.
 - 9. 5mm POTTING WALL VARIANT IS SHOWN. SEE ORDER CODE.

Customer Information Sheet

IF IN DOUBT - ASK

©

NOT TO SCALE

THIRD ANGLE PROJECTION

ALL DIMENSIONS IN mm

PLASTIC SHIELDED ASSEMBLIES

EXAMPLE PART No.
M80-FC10673F1-0150L02

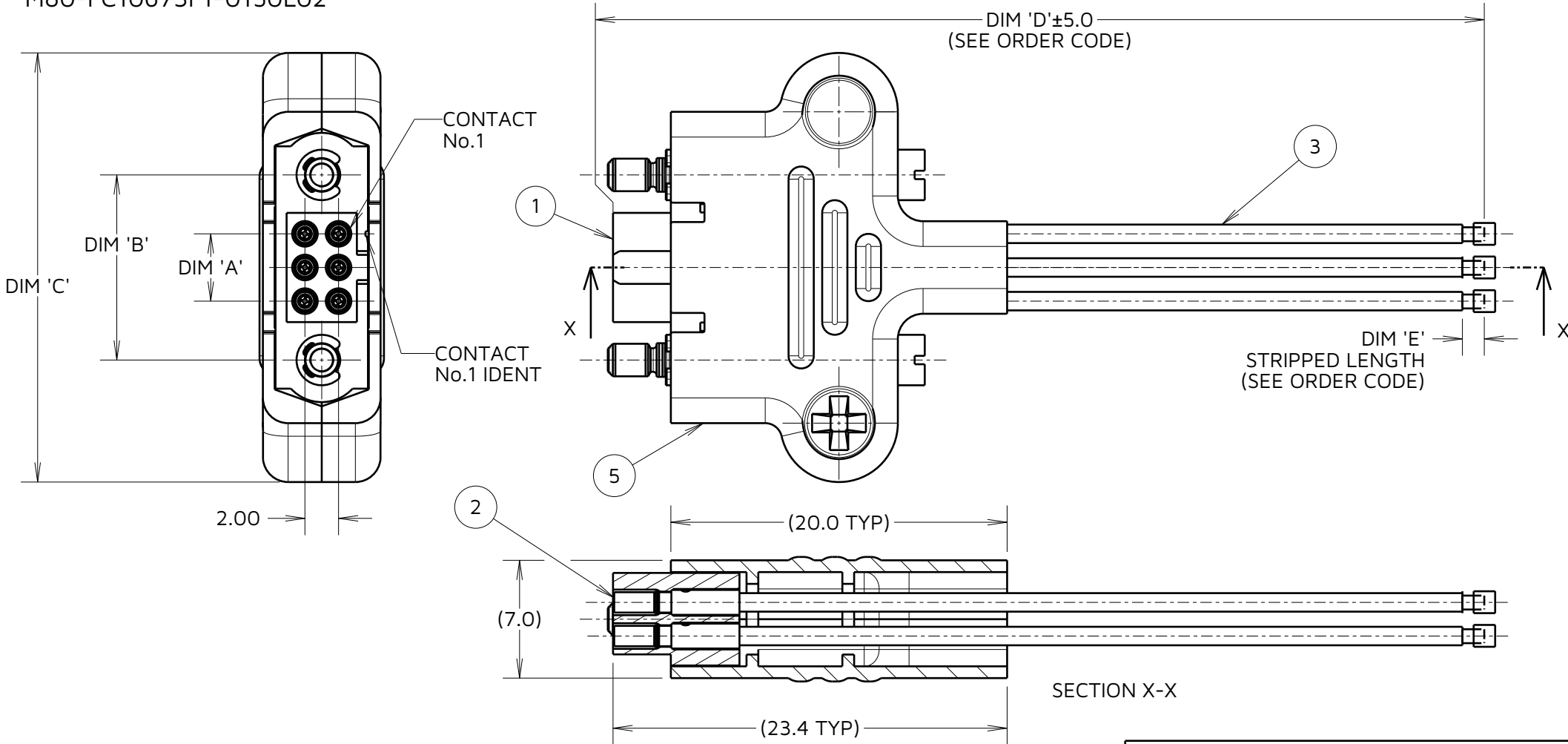
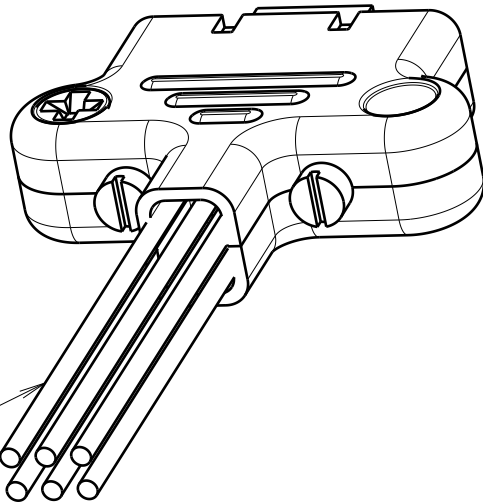


TABLE 8: BILL OF MATERIALS
ADDITIONAL ITEMS FOR PLASTIC SHIELDED ASSEMBLIES

M80-XXXXXXXXX-XXXXLXX	CONNECTOR 1 BACKSHELL KIT
	SEE ORDER CODE FOR TOTAL No. OF SIGNAL AND SPECIAL CONTACTS
	5



ASSEMBLY SHOWN FOR ILLUSTRATION
PURPOSES ONLY. SEE ORDER CODE

TABLE 9: DIMENSION CALCULATIONS	
DIMENSION	MEASUREMENT
DIM 'A'	TOTAL No. OF CONTACTS - 2.00
DIM 'B'	TOTAL No. OF CONTACTS + 5.00
DIM 'C'	TOTAL No. OF CONTACTS + 19.5

ORDER CODE: M80-XXXXXXXXX-XXXXLXX

CONNECTOR 1 GENDER:
F = FEMALE
M = MALE

CONNECTOR TYPE:
C = STANDARD J-TEK
B = T-CONTACT

WIRE GAUGE:
NO RESTRICTIONS
(SEE ORDER CODE ON SHEET 9)
TOTAL NUMBER OF CONTACTS:
04-50 (EVEN ONLY)

WIRE STYLE:
73 = PLASTIC SHIELDED
74 = PLASTIC SHIELDED & TWISTED

DIM 'E' STRIPPED LENGTH:
BLANK = BLUNT CUT
01 = 1mm MIN
09 = 9mm MAX

DIM 'D'
CABLE LENGTH:
0060 = 0060mm MIN
9999 = 9999mm MAX

CONN. 1 FIXING STYLE:
F1/F2/MA/MB
(SEE SHEET 9 FOR DESC.)

NOTES:
10. ASSEMBLIES SHOWN FOR ILLUSTRATIVE PURPOSES AND WILL
DIFFER ON A PART NUMBER BASIS. SEE ORDER CODE ON THIS
SHEET.

HARWIN

www.harwin.com

TOLERANCES
X. = $\pm 1\text{mm}$
X.X = $\pm 0.50\text{mm}$
X.XX = $\pm 0.20\text{mm}$
X.XXX = $\pm 0.01\text{mm}$
ANGLES = $\pm 5^\circ$
UNLESS STATED

THIS DRAWING AND ANY
INFORMATION OR DESCRIPTIVE
MATTER SET OUT HEREON ARE
CONFIDENTIAL AND COPYRIGHT
PROPERTY OF THE HARWIN GROUP
AND MUST NOT BE DISCLOSED,
LOANED, COPIED OR USED FOR
MANUFACTURING, TENDERING OR FOR
ANY OTHER PURPOSE WITHOUT THEIR
WRITTEN PERMISSION.

MATERIAL & FINISH:

SEE SHEET 9

TITLE:
M80 J-TEK SINGLE ENDED
CABLE ASSEMBLY

DRAWING NUMBER:
M80-XXXXXXXXX-XXXXLXX

SHT
14
OF
16

RTP	2	14.04.25	35978
NAME	ISS.	DATE	CN/CO
APPROVED: R.PORTLOCK			
CHECKED: R.ALEXANDER			
DRAWN: R.PORTLOCK			

Customer Information Sheet

IF IN DOUBT - ASK

©

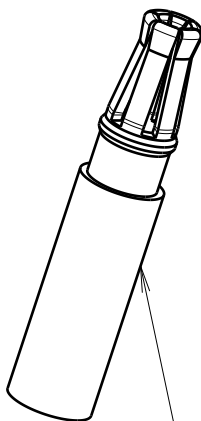
NOT TO SCALE

THIRD ANGLE PROJECTION

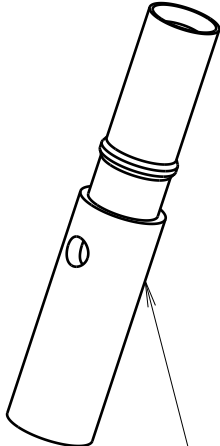
ALL DIMENSIONS IN mm

CONTACT IDENTIFICATION SHEET

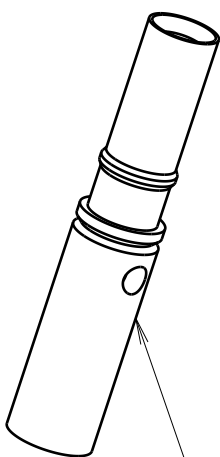
FEMALE CONTACTS



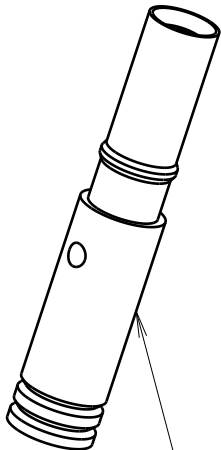
T-CONTACT:
M80-2060005



M80-0110005
NO IDENT



M80-0130005
WITH IDENT

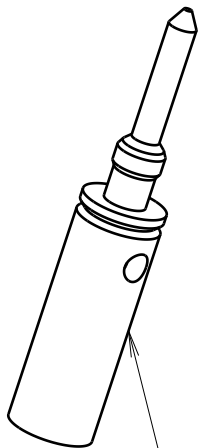


M80-0190005
WITH DOUBLE IDENT

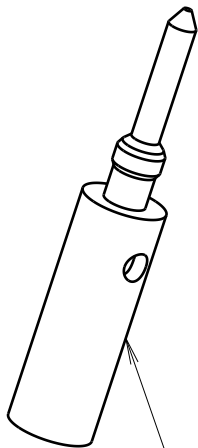
TABLE 10: CONTACT COMPATIBILITY

TABLE 10: CONTACT COMPATIBILITY			
CONTACT PART No.	CONTACT GENDER	COMPATIBLE CONNECTOR STYLE(S) (SEE SHEET 9 ORDER CODE)	COMPATIBLE WIRE GAUGE(S)
M80-2060005	FEMALE	B ONLY	22AWG
M80-0110005		C/E/F	22AWG
M80-0130005			24-28AWG
M80-0190005			28-30AWG
M80-1940005	22AWG		
M80-1950005	24-28AWG		
M80-0400005	22AWG		
M80-0410005	24-28AWG		

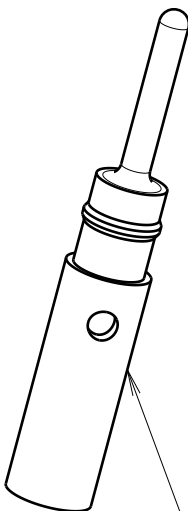
MALE CONTACTS



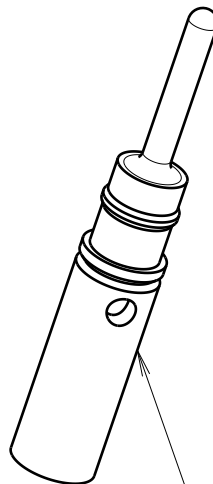
M80-1940005
NO IDENT



M80-1950005
WITH IDENT



M80-0400005
NO IDENT



M80-0410005
WITH IDENT

NOTES:
10. SEE TABLE 10 FOR POSSIBLE CONTACT CONFIGURATION.

RTP	2	14.04.25	35978
NAME	ISS.	DATE	CN/CO
APPROVED: R.PORTLOCK			
CHECKED: R.ALEXANDER			
DRAWN: R.PORTLOCK			

HARWIN

www.harwin.com

TOLERANCES
X. = ±1mm
X.X = ±0.50mm
X.XX = ±0.20mm
X.XXX = ±0.01mm
ANGLES = ±5°
UNLESS STATED

THIS DRAWING AND ANY INFORMATION OR DESCRIPTIVE MATTER SET OUT HEREON ARE CONFIDENTIAL AND COPYRIGHT PROPERTY OF THE HARWIN GROUP AND MUST NOT BE DISCLOSED, LOANED, COPIED OR USED FOR MANUFACTURING, TENDERING OR FOR ANY OTHER PURPOSE WITHOUT THEIR WRITTEN PERMISSION.

MATERIAL & FINISH:

SEE SHEET 9

TITLE:
M80 J-TEK SINGLE ENDED
CABLE ASSEMBLY

DRAWING NUMBER:
M80-XXXXXXXXXX-XXXXLXX

SHT
15
OF
16

Customer Information Sheet

IF IN DOUBT - ASK

©

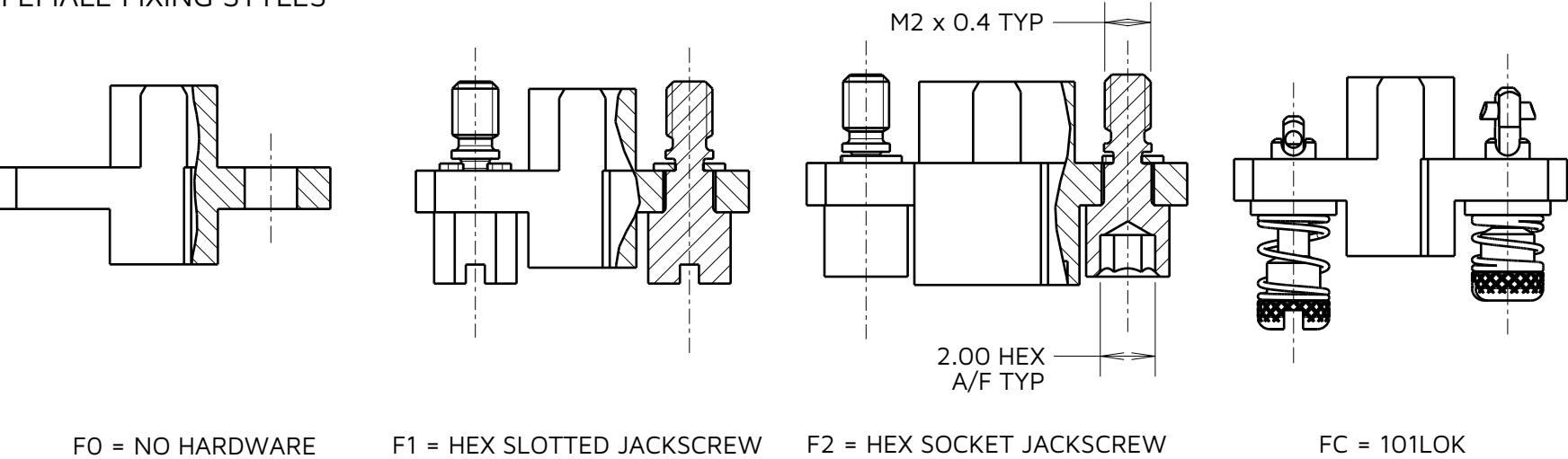
NOT TO SCALE

THIRD ANGLE PROJECTION

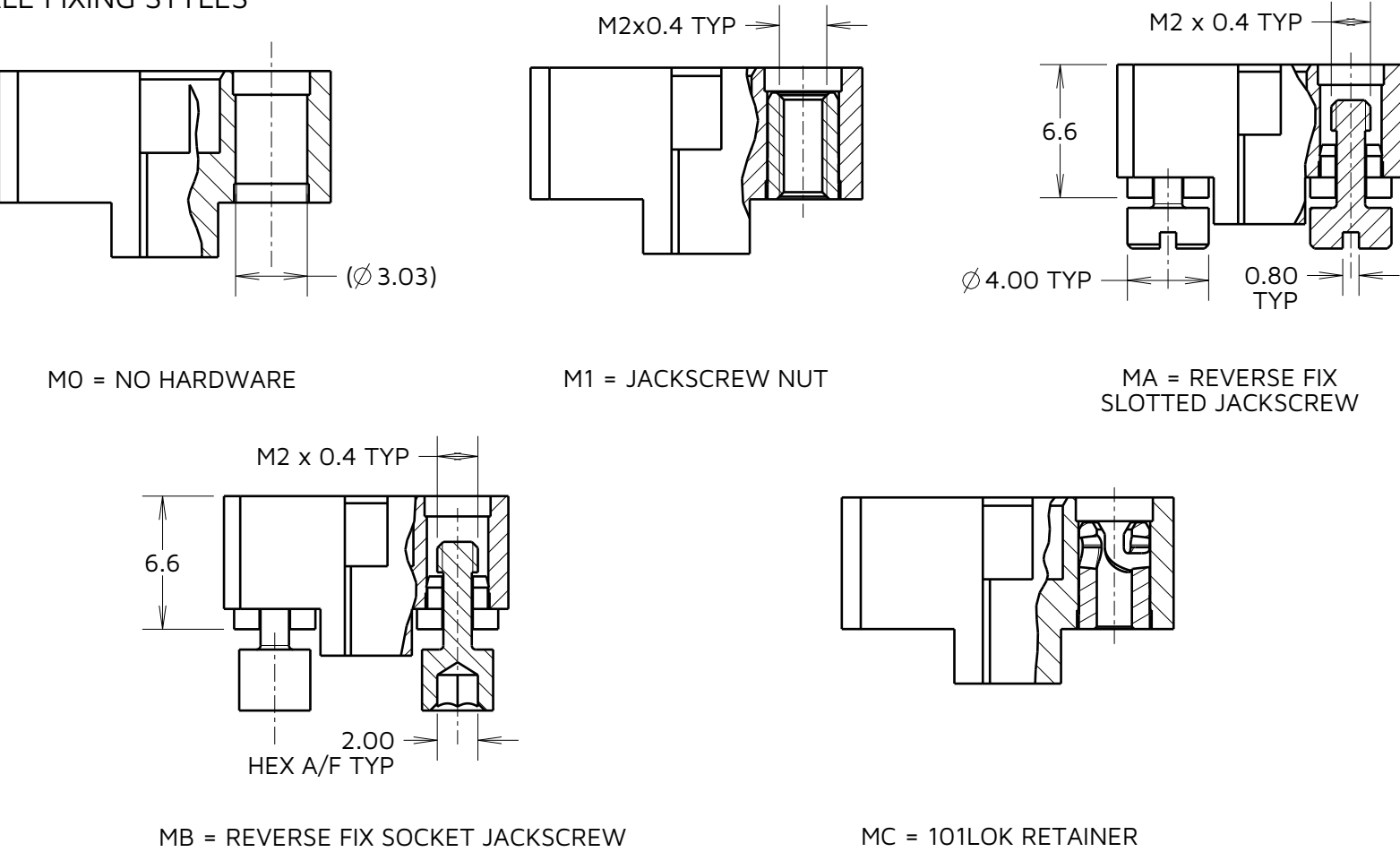
ALL DIMENSIONS IN mm

FIXING IDENTIFICATION SHEET

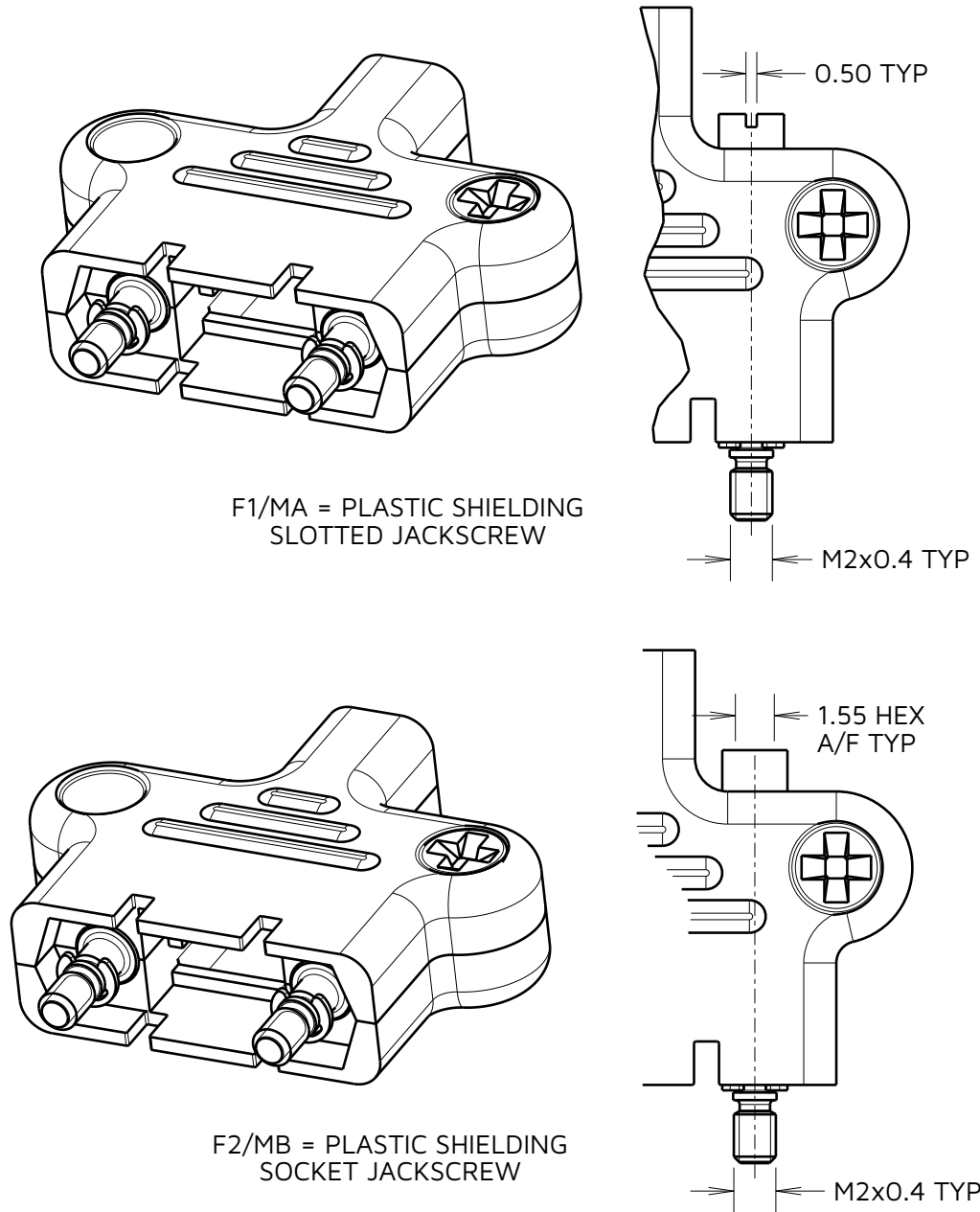
FEMALE FIXING STYLES



MALE FIXING STYLES



SHIELDED FIXING STYLES (FOR OPTIONS WITH WIRE STYLE '73' - '74' IN ORDER CODE)



RTP	2	14.04.25	35978
NAME	ISS.	DATE	CN/CO
APPROVED: R.PORTLOCK			
CHECKED: R.ALEXANDER			
DRAWN: R.PORTLOCK			

HARWIN
www.harwin.com

TOLERANCES
X. = ±1mm
X.X = ±0.50mm
X.XX = ±0.20mm
X.XXX = ±0.01mm
ANGLES = ±5°
UNLESS STATED

THIS DRAWING AND ANY INFORMATION OR DESCRIPTIVE MATTER SET OUT HEREON ARE CONFIDENTIAL AND COPYRIGHT PROPERTY OF THE HARWIN GROUP AND MUST NOT BE DISCLOSED, LOANED, COPIED OR USED FOR MANUFACTURING, TENDERING OR FOR ANY OTHER PURPOSE WITHOUT THEIR WRITTEN PERMISSION.

MATERIAL & FINISH:

SEE SHEET 9

TITLE:
**M80 J-TEK SINGLE ENDED
CABLE ASSEMBLY**

DRAWING NUMBER:
M80-XXXXXXXX-XXXXLXX

SHT
16
OF
16